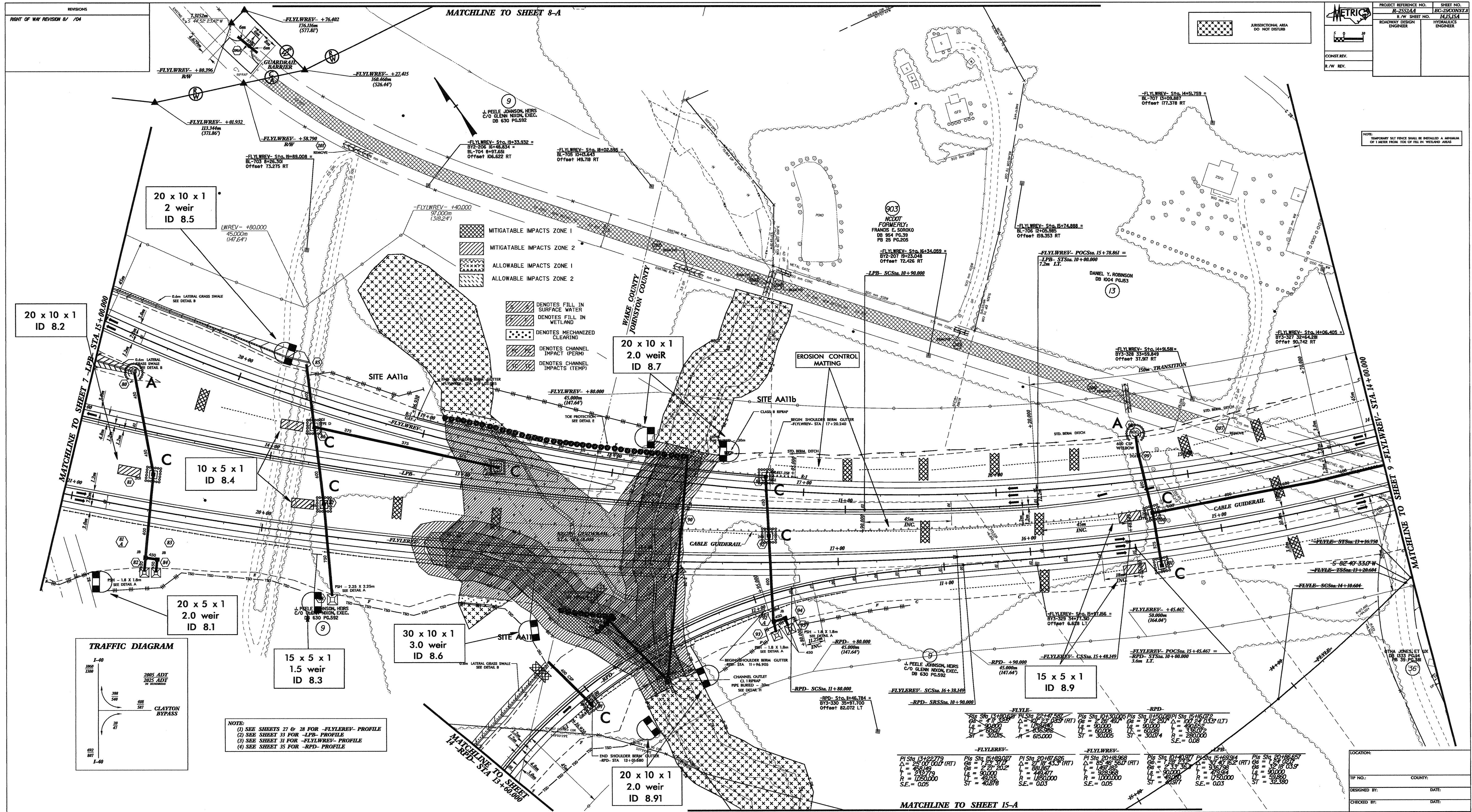


REVISIONS
RIGHT OF WAY REVISION B / 704

PROJECT REFERENCE NO. R-252244	SHEET NO. 14.15.15A
ROADWAY DESIGN ENGINEER	HYDRAULICS ENGINEER
CONST. REV.	
R/W REV.	



20 x 10 x 1  
ID 8.2

20 x 10 x 1  
2 weir  
ID 8.5

10 x 5 x 1  
ID 8.4

20 x 5 x 1  
2.0 weir  
ID 8.1

15 x 5 x 1  
1.5 weir  
ID 8.3

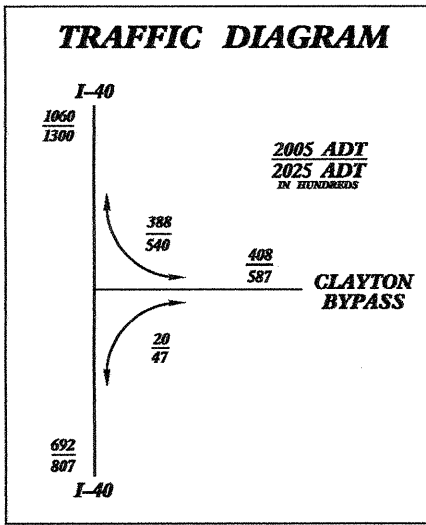
30 x 10 x 1  
3.0 weir  
ID 8.6

20 x 10 x 1  
2.0 weir  
ID 8.7

20 x 10 x 1  
2.0 weir  
ID 8.91

15 x 5 x 1  
ID 8.9

- MITIGATABLE IMPACTS ZONE 1
- MITIGATABLE IMPACTS ZONE 2
- ALLOWABLE IMPACTS ZONE 1
- ALLOWABLE IMPACTS ZONE 2
- DENOTES FILL IN SURFACE WATER
- DENOTES FILL IN WETLAND
- DENOTES MECHANIZED CLEARING
- DENOTES CHANNEL IMPACT (PERM)
- DENOTES CHANNEL IMPACTS (TEMP)



NOTE:  
 (1) SEE SHEETS 27 & 28 FOR -FLYLWREV- PROFILE  
 (2) SEE SHEET 33 FOR -LFP- PROFILE  
 (3) SEE SHEET 31 FOR -FLYLWREV- PROFILE  
 (4) SEE SHEET 35 FOR -RPD- PROFILE

FLYLWREV-	FLYLWREV-	FLYLWREV-	FLYLWREV-
Pile Sta 13+22.779 $\Delta = 20' 00.00'$ (RT) $E = 100.00'$ $L = 20.00'$ $T = 100.00'$ $ST = 100.00'$ $S.E. = 0.05$	Pile Sta 15+99.027 $\Delta = 27' 20.22'$ (RT) $E = 100.00'$ $L = 27.20'$ $T = 100.00'$ $ST = 100.00'$ $S.E. = 0.03$	Pile Sta 20+18.958 $\Delta = 15' 46.50'$ (RT) $E = 100.00'$ $L = 15.47'$ $T = 100.00'$ $ST = 100.00'$ $S.E. = 0.05$	Pile Sta 01+14.971 / Pile Sta 15+16.072 $E = 100.00'$ / $E = 100.00'$ $L = 14.97'$ / $L = 16.07'$ $T = 100.00'$ / $T = 100.00'$ $ST = 100.00'$ / $ST = 100.00'$ $S.E. = 0.08$

LOCATION:	COUNTY:
DESIGNED BY:	DATE:
CHECKED BY:	DATE: