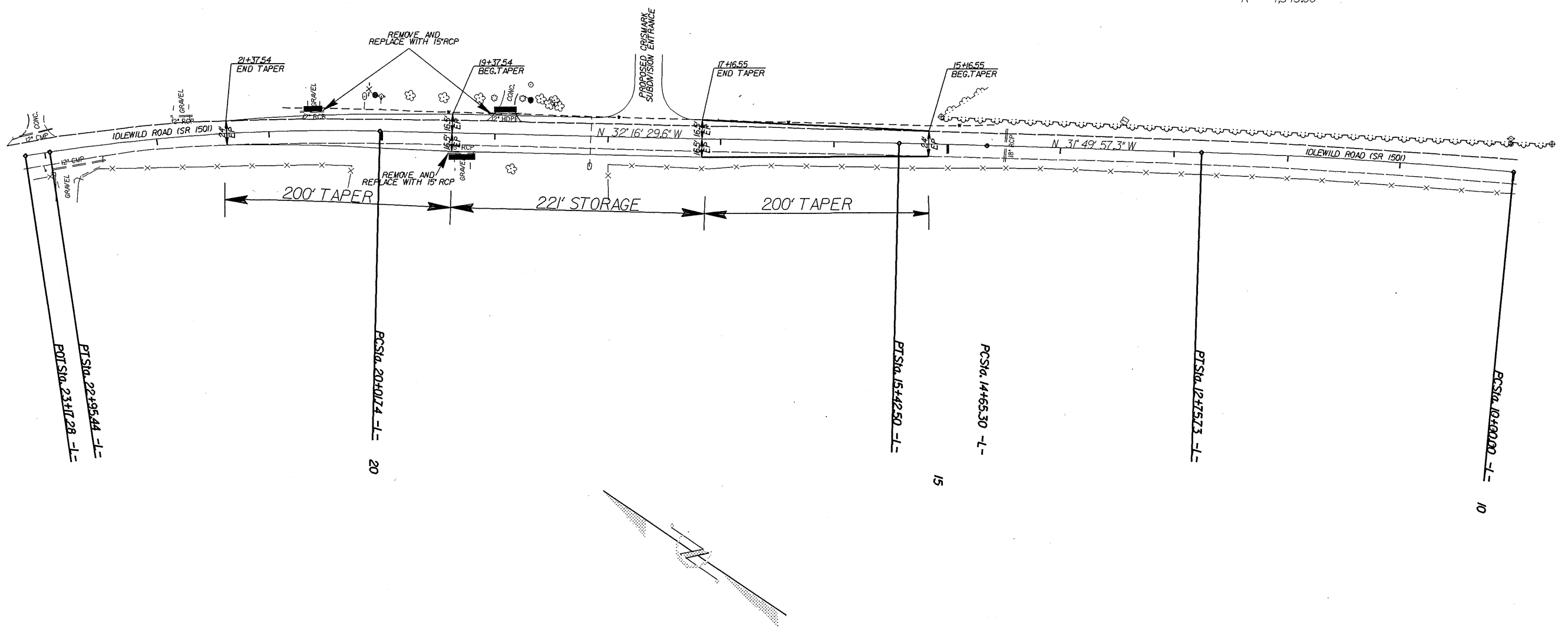


PROJECT REFERENCE NO. MA 10121R	SHEET NO. 6
RW SHEET NO.	
ROADWAY DESIGN ENGINEER	HYDRAULICS ENGINEER

-L-
 PI Sta 21+48.95
 $\Delta = 9^{\circ} 54' 15.5"$ (LT)
 $D = 3^{\circ} 22' 19.9"$
 $L = 293.70'$
 $T = 147.22'$
 $R = 1,699.06'$

-L-
 PI Sta 15+03.90
 $\Delta = 0^{\circ} 26' 32.3"$ (LT)
 $D = 0^{\circ} 34' 22.6"$
 $L = 77.20'$
 $T = 38.60'$
 $R = 10,000.00'$

-L-
 PI Sta 11+37.91
 $\Delta = 3^{\circ} 38' 15.3"$ (LT)
 $D = 1^{\circ} 19' 09.4"$
 $L = 275.73'$
 $T = 137.91'$
 $R = 4,343.00'$



8/17/95
 22-APR-2005 14:49
 C:\temp\crs\mark\dgn\plansheet.dgn
 Revision