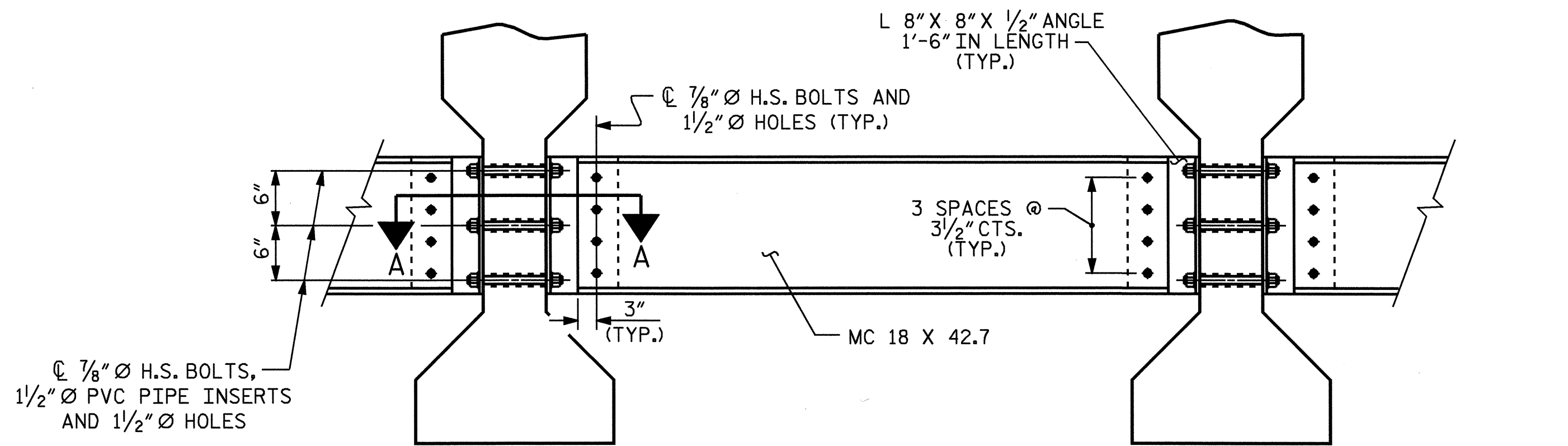
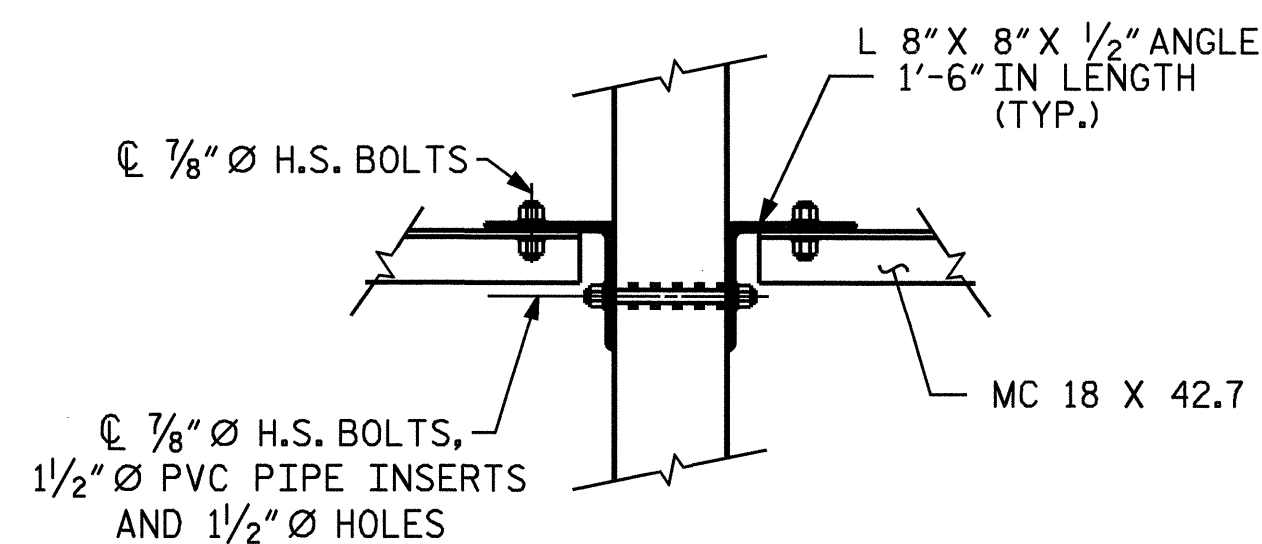


**FRAMING PLAN**

DIMENSIONS SHOWN ARE TAKEN AT THE TOP OF THE END BENT CAP ALONG THE SLOPE.



ANGLE DETAIL



SECTION A-A

**INTERMEDIATE DIAPHRAGM DETAILS**

**STRUCTURAL STEEL NOTES**

ALL INTERMEDIATE DIAPHRAGM STEEL AND PLATE WASHERS SHALL BE AASHTO M270 GRADE 36 OR APPROVED EQUAL.

ALL FIELD CONNECTIONS SHALL BE 7/8" DIAMETER HIGH STRENGTH BOLTS UNLESS OTHERWISE NOTED.

TENSION ON THE AASHTO M164 BOLTS SHALL BE CALIBRATED USING DIRECT TENSION INDICATOR WASHERS IN ACCORDANCE WITH ARTICLE 440-10 OF THE STANDARD SPECIFICATIONS.

THE CHANNELS, ANGLES, BOLTS, WASHERS, PLATE WASHERS AND DIRECT TENSION INDICATORS SHALL BE GALVANIZED IN ACCORDANCE WITH THE STANDARD SPECIFICATIONS.

USE A MINIMUM 5/16" THICK PLATE WASHER WITH STANDARD HOLES UNDER EACH BOLT HEAD AND NUT. THE PLATE WASHERS SHALL HAVE SUFFICIENT SIZE TO COVER THE HOLES AFTER INSTALLATION. DIRECT TENSION INDICATORS ARE TO BE USED IN CONJUNCTION WITH THE PLATE WASHERS.

PAYMENT FOR THE CHANNELS, ANGLES, BOLTS, WASHERS, PLATE WASHERS, AND DIRECT TENSION INDICATORS IS INCLUDED IN THE PAY ITEM "APPROXIMATE POUNDS STRUCTURAL STEEL".

INTERMEDIATE DIAPHRAGM ASSEMBLY SHALL COMPLY WITH SECTION 1072 OF THE STANDARD SPECIFICATIONS.

CONTRACTOR SHALL SUBMIT TWO SETS OF WORKING DRAWINGS FOR THE INTERMEDIATE DIAPHRAGM ASSEMBLY FOR REVIEW, COMMENTS AND ACCEPTANCE. AFTER REVIEW, COMMENTS, AND ACCEPTANCE, SUBMIT SEVEN SETS FOR DISTRIBUTION.

PROJECT NO. B-3700  
STANLY COUNTY  
 STATION: 16+85.00 -L-

STATE OF NORTH CAROLINA  
 DEPARTMENT OF TRANSPORTATION  
 RALEIGH

**FRAMING PLAN**



DRAWN BY: B. C. HANKS DATE: 2/10/05  
 CHECKED BY: R. W. WRIGHT DATE: 3/2/05

REVISIONS						SHEET NO.
NO.	BY:	DATE:	NO.	BY:	DATE:	
1			3			S-5
2			4			TOTAL SHEETS 22