

NOTES

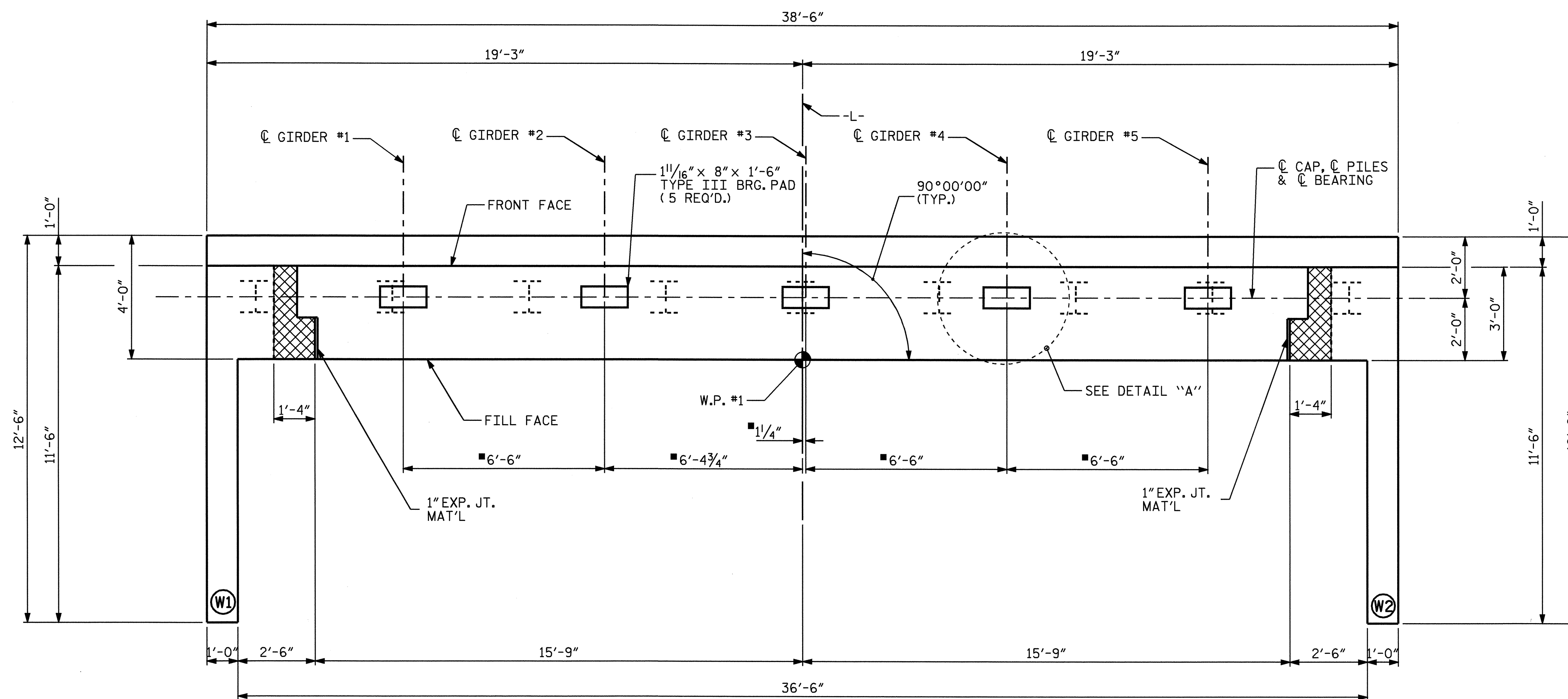
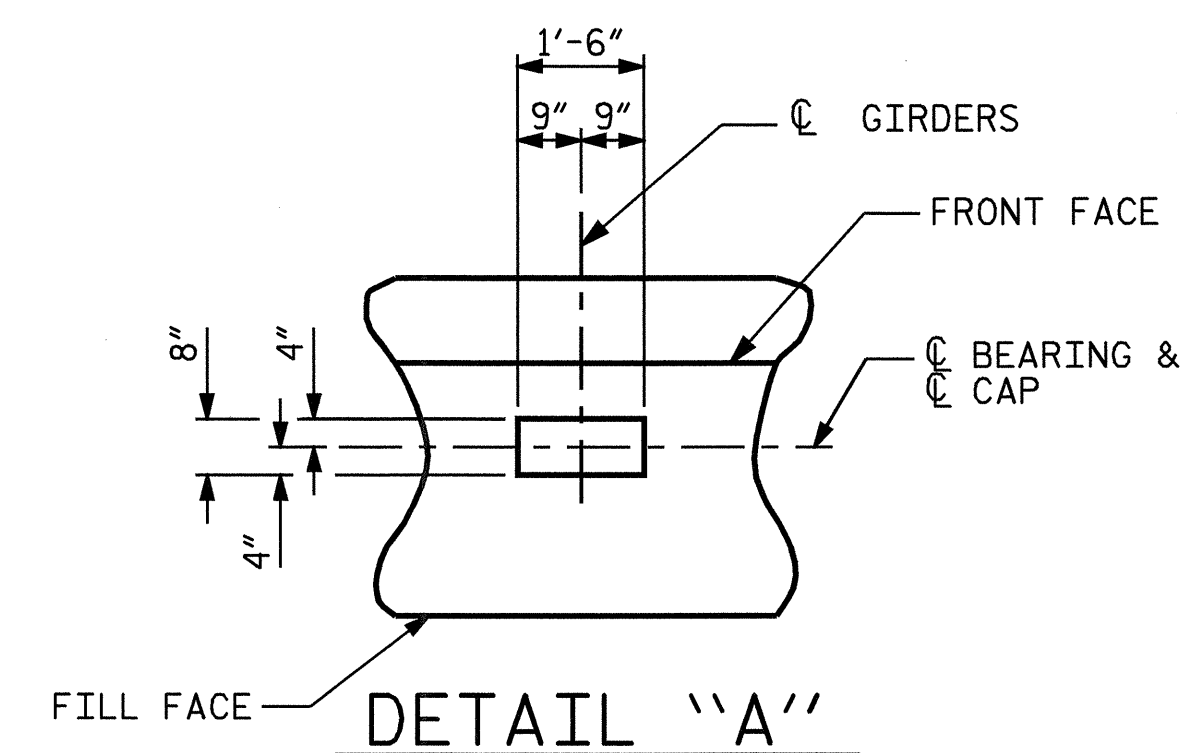
FOR PILE SPLICE DETAILS, SEE INTEGRAL ABUTMENT DETAILS SHEET 3 OF 3.

THE CONCRETE IN THE SHADED AREA OF THE WING SHALL BE POURED AFTER THE PARAPET AND END POST ARE CAST IF SLIP FORMING IS USED.

THE CONTRACTOR SHALL PROVIDE FOR INSTALLATION OF THE 4" DIAMETER DRAIN PIPE THROUGH THE WING WALL AS REQUIRED FOR REINFORCED BRIDGE APPROACH FILLS. SEE THE ROADWAY PLANS. REINFORCING STEEL IN THE WING WALL MAY BE SHIFTED AS NECESSARY TO CLEAR THE DRAIN PIPE.

■ DIMENSIONS SHOWN ARE TAKEN AT THE TOP OF THE CAP ALONG THE SLOPE.

FOR TEMPORARY DRAINAGE DETAILS, SEE INTEGRAL ABUTMENT DETAILS SHEET 3 OF 3.



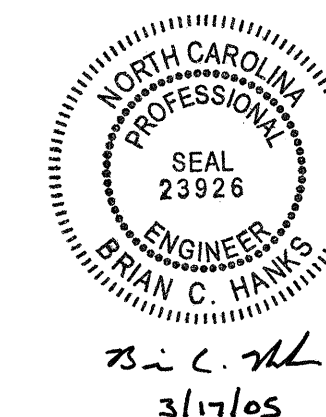
PLAN

TOP OF PILE ELEVATIONS	
PILE	ELEVATION
P1	484.910
P2	484.998
P3	485.086
P4	485.175
P5	485.263
P6	485.351
P7	485.440
P8	485.528
P9	485.616

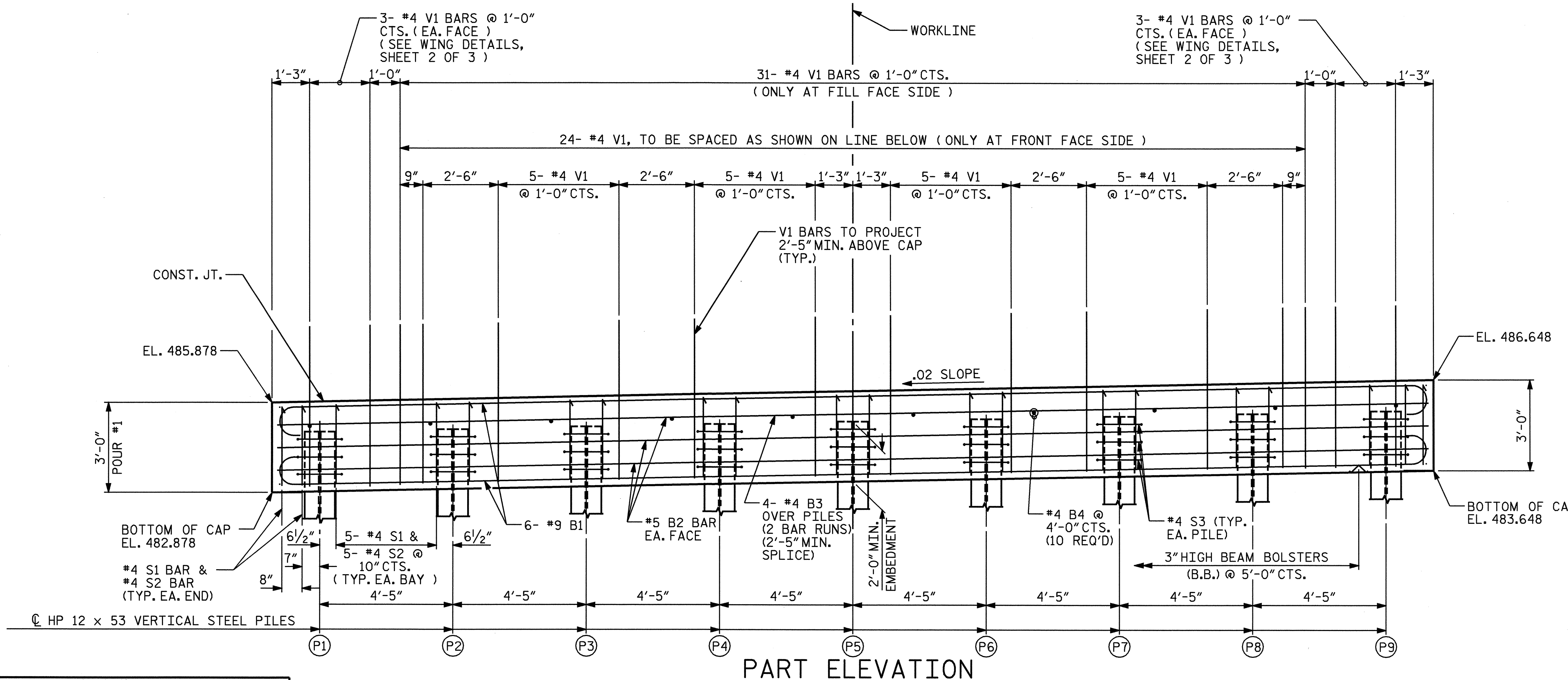
PROJECT NO. B-3700
STANLY COUNTY
 STATION: 16+85.00 -L-

SHEET 1 OF 3

STATE OF NORTH CAROLINA
 DEPARTMENT OF TRANSPORTATION
 RALEIGH
**SUBSTRUCTURE
 INTEGRAL ABUTMENT 1
 DETAILS**



REVISIONS						SHEET NO.
NO.	BY:	DATE:	NO.	BY:	DATE:	5-14
1			3			TOTAL SHEETS
2			4			22



PART ELEVATION

TO SHOW STEEL AND CONCRETE FOR POUR 1 (ONLY)
 WINGS NOT SHOWN FOR CLARITY, SEE SHEET 2 OF 3 FOR DETAILS

DRAWN BY: Ned M. Ruffin DATE: 2/28/05
 CHECKED BY: B. C. HANKS DATE: 3-9-05