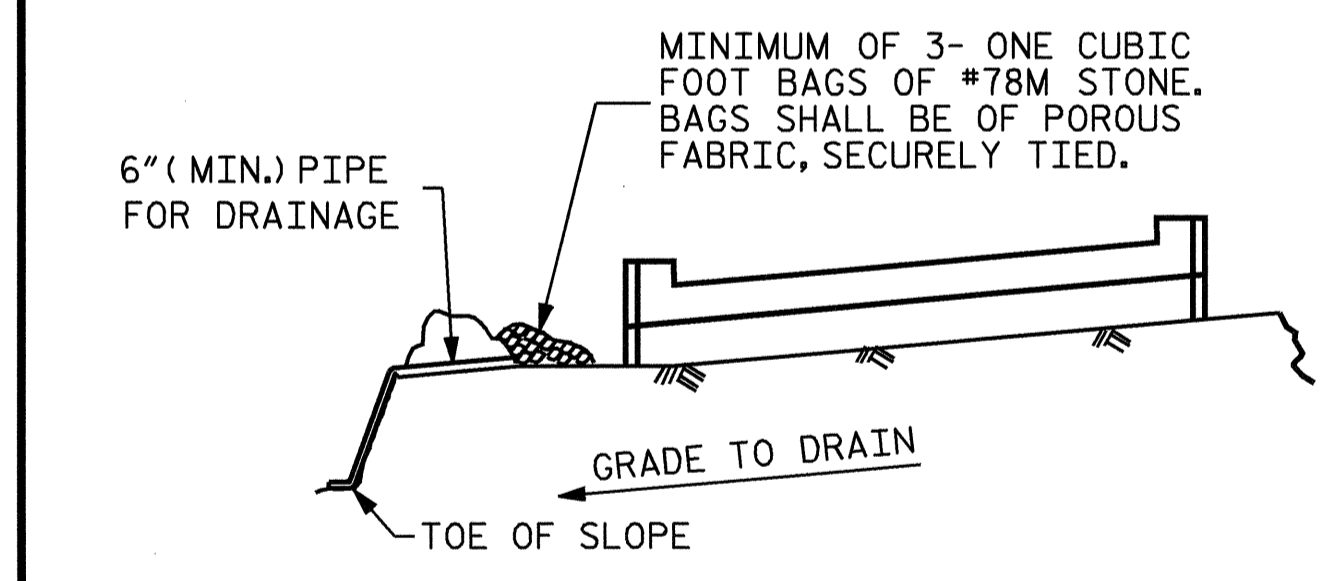


**SECTION THRU INTEGRAL ABUTMENT**

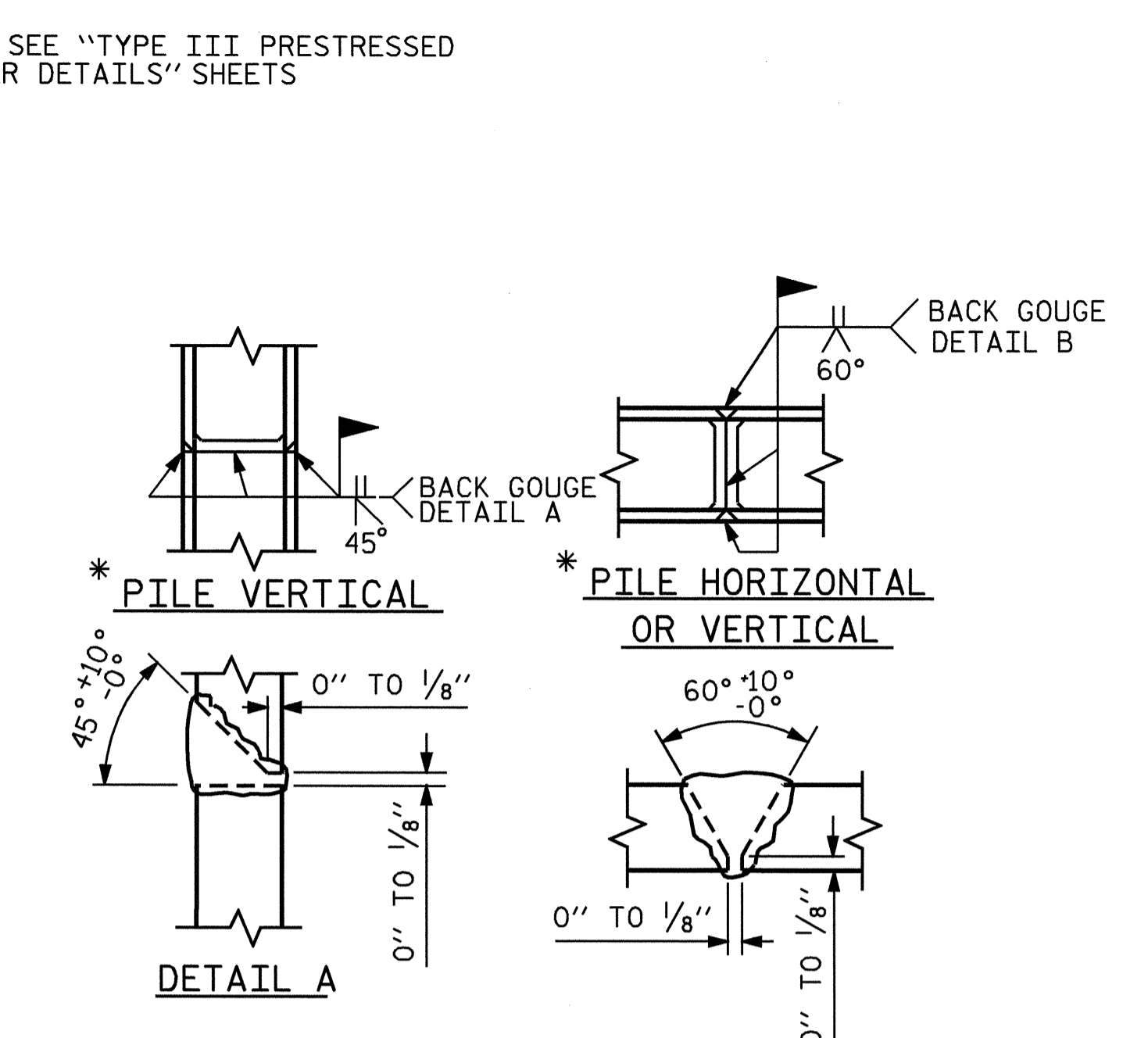


BAGGED STONE AND PIPE SHALL BE PLACED IMMEDIATELY AFTER COMPLETION OF END BENT EXCAVATION. PIPE MAY BE EITHER CONCRETE, CORRUGATED STEEL, CORRUGATED ALUMINUM ALLOY, OR CORRUGATED PLASTIC. PERFORATED PIPE WILL NOT BE ALLOWED.

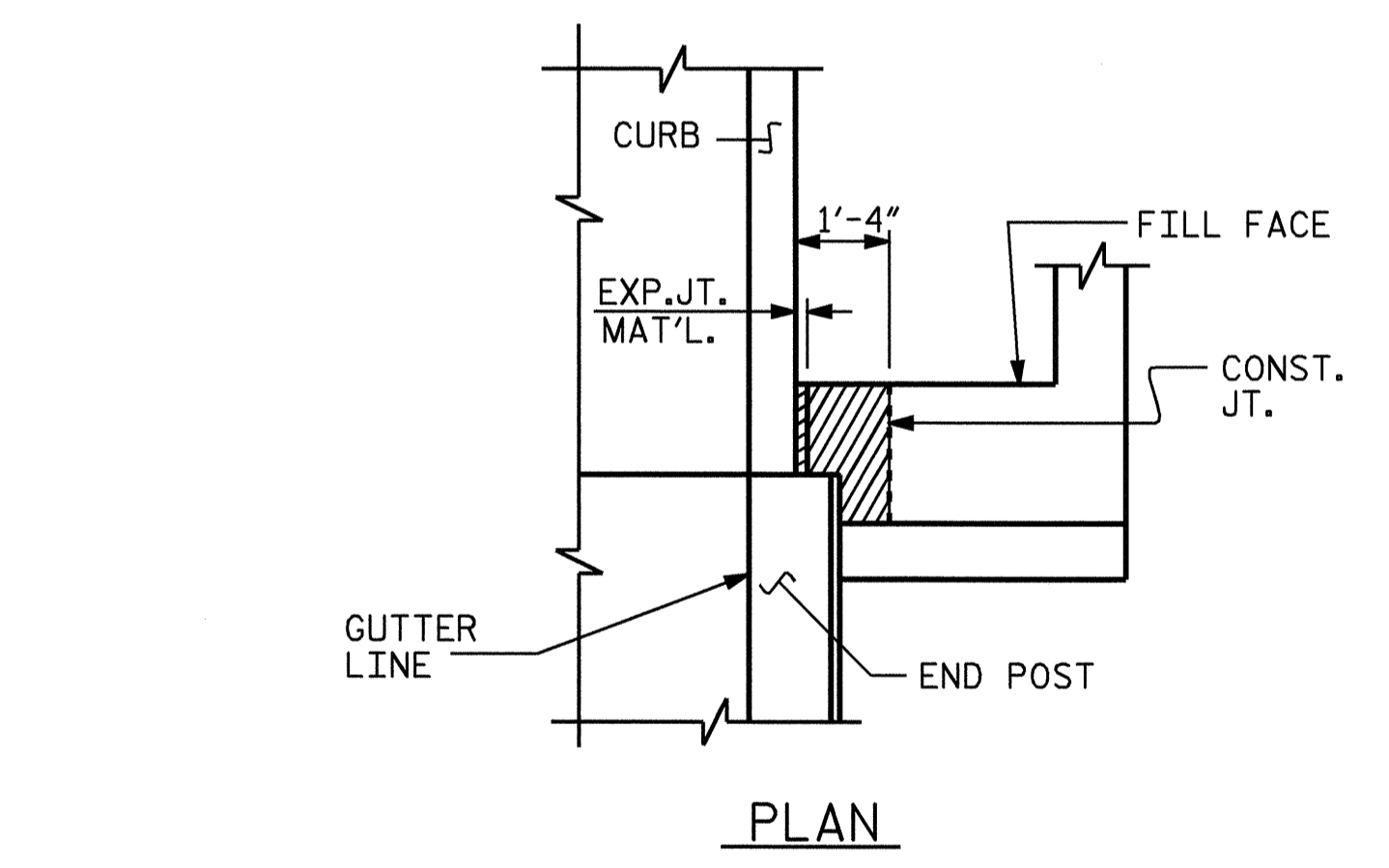
BAGGED STONE SHALL REMAIN IN PLACE UNTIL THE ENGINEER DIRECTS THAT IT BE REMOVED. THE CONTRACTOR SHALL REMOVE AND DISPOSE OF SILT ACCUMULATIONS AT BAGGED STONE WHEN SO DIRECTED BY THE ENGINEER. BAGS SHALL BE REMOVED AND REPLACED WHENEVER THE ENGINEER DETERMINES THAT THEY HAVE DETERIORATED AND LOST THEIR EFFECTIVENESS.

NO SEPARATE PAYMENT WILL BE MADE FOR THIS WORK AND THE ENTIRE COST OF THIS WORK SHALL BE INCLUDED IN THE UNIT CONTRACT PRICE FOR THE SEVERAL PAY ITEMS.

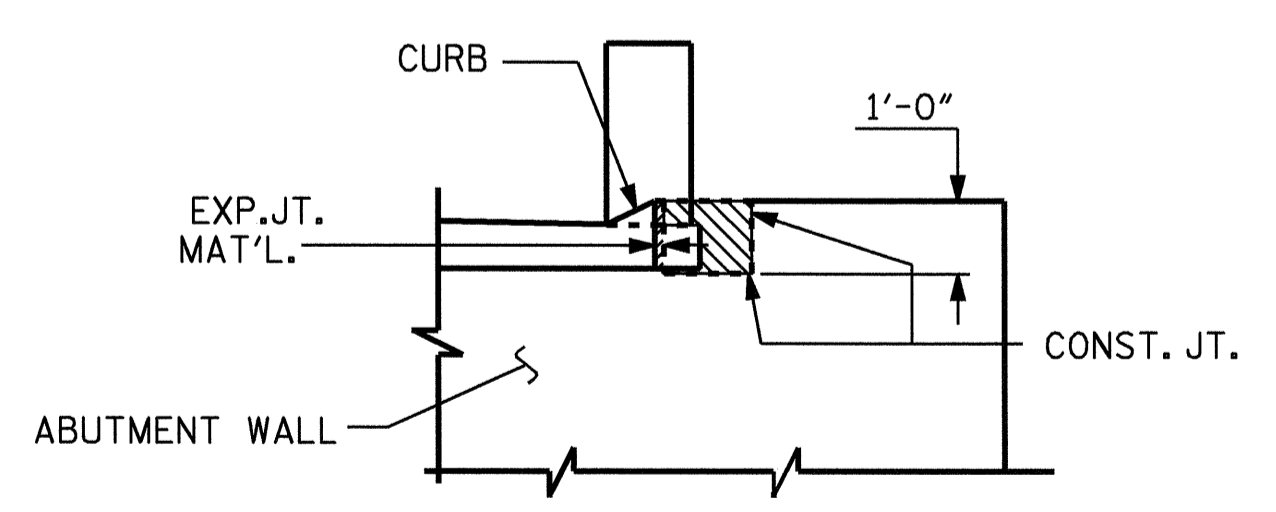
**TEMPORARY DRAINAGE AT INTEGRAL ABUTMENT**



**PILE SPLICE DETAILS**



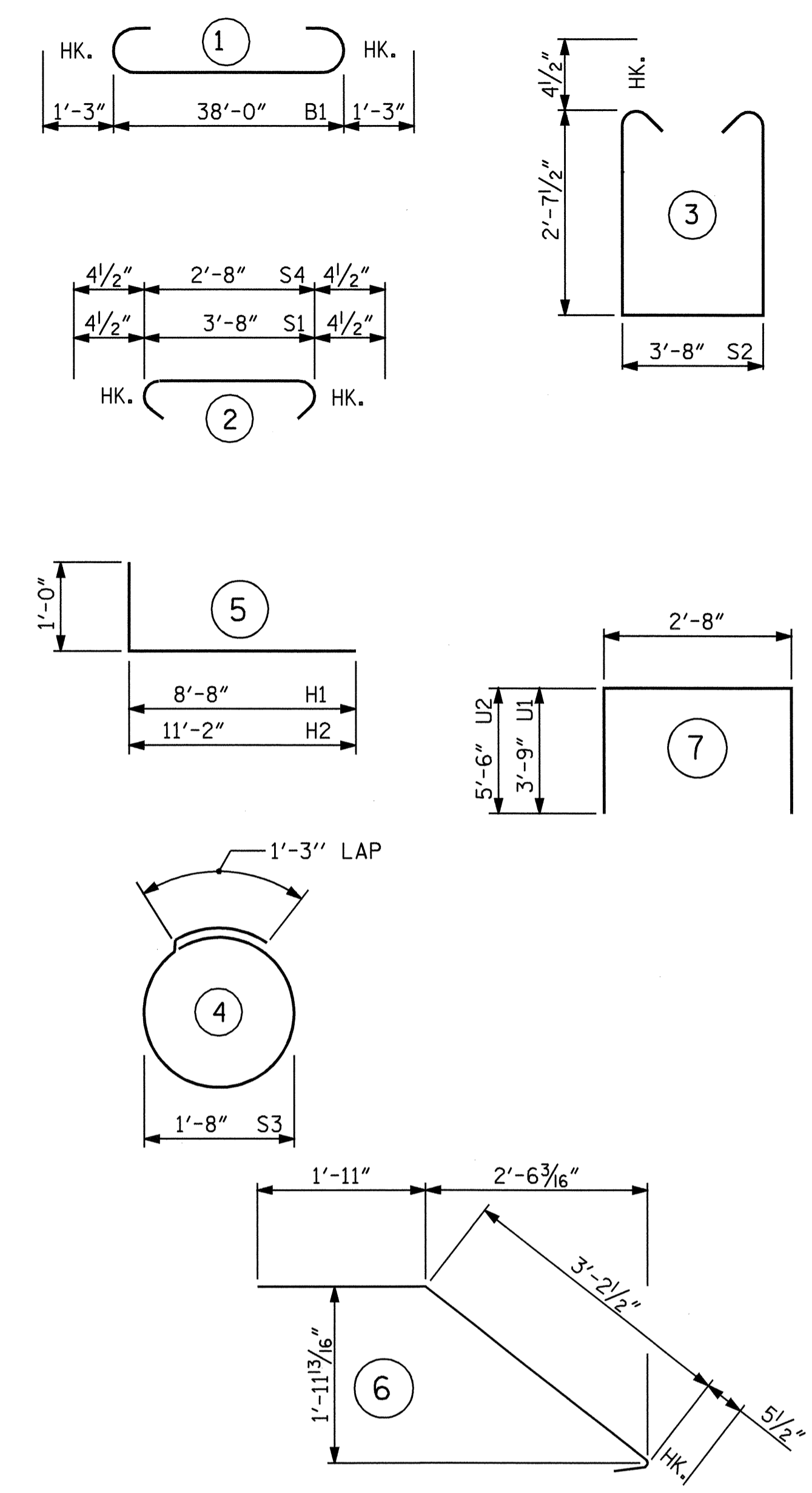
**PLAN**



**ELEVATION**

**BLOCKOUT IN WING WALL FOR SLIP FORMING  
ONE BAR METAL RAIL PARAPET**

**BAR TYPES**



ALL BAR DIMENSIONS ARE OUT TO OUT.

**BILL OF MATERIAL  
INTEGRAL ABUTMENT #2**

BAR NO	SIZE	TYPE	LENGTH	WEIGHT	
B1	12	9	1	40'-6"	1652
B2	6	5	STR	38'-2"	239
B3	8	4	STR	20'-3"	108
B4	10	4	STR	3'-8"	24
H1	20	5	5	9'-8"	202
H2	20	5	5	12'-2"	254
K1	4	5	STR	38'-2"	159
K2	4	5	STR	4'-9"	20
K3	12	5	STR	5'-6"	69
K4	4	5	STR	4'-2"	17
K5	2	5	STR	5'-2"	11
K6	2	5	STR	5'-0"	10
K7	8	5	STR	3'-2"	26
S1	44	4	2	4'-5"	130
S2	44	4	3	9'-8"	284
S3	27	4	4	6'-6"	117
S4	60	4	2	3'-5"	137
S5	24	5	6	5'-7"	140
U1	24	4	7	10'-2"	163
U2	6	4	7	13'-8"	55
V1	111	4	STR	5'-3"	389
V2	44	4	STR	5'-6"	162
REINFORCING STEEL				lbs.	4,368

CLASS "A" CONCRETE BREAKDOWN

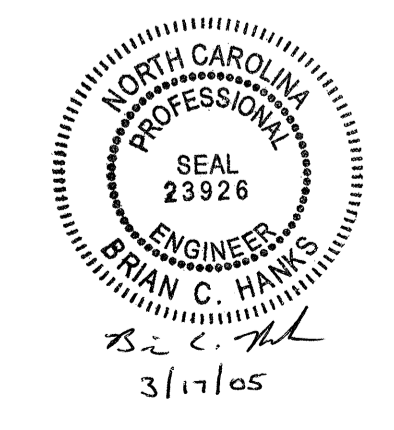
POUR #1 (CAP & LOWER WING) 19.0 C.Y.  
 POUR #2 (ABUTMENT WALL AND UPPER WINGS) 19.5 C.Y.  
 TOTAL 38.5 C.Y.

HP 12 x 53 STEEL PILES  
 No. = 9 LIN. FEET. 180

PROJECT NO. B-3700  
STANLY COUNTY  
 STATION: 16+85.00 -L-

SHEET 3 OF 3

STATE OF NORTH CAROLINA  
 DEPARTMENT OF TRANSPORTATION  
 RALEIGH  
 SUBSTRUCTURE  
**INTEGRAL ABUTMENT 2  
 DETAILS**



REVISIONS						SHEET NO.
NO.	BY:	DATE:	NO.	BY:	DATE:	TOTAL SHEETS
1			3			5-19
2			4			ZZ

DRAWN BY: Neil M. Ruffin DATE: 2/28/05  
 CHECKED BY: B. C. HANKS DATE: 3-9-05