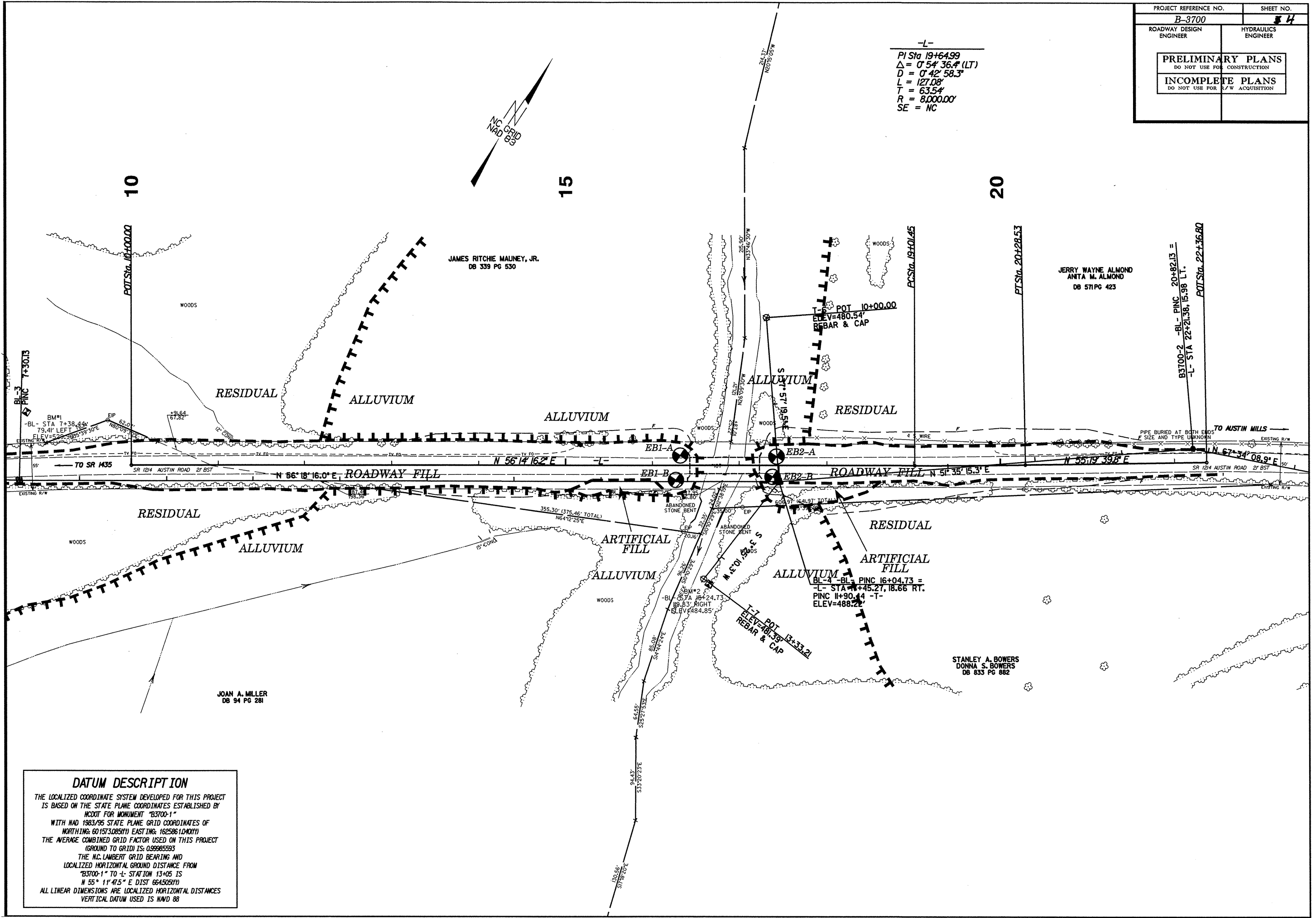


PROJECT REFERENCE NO.	SHEET NO.
B-3700	4
ROADWAY DESIGN ENGINEER	HYDRAULICS ENGINEER
<b>PRELIMINARY PLANS</b> DO NOT USE FOR CONSTRUCTION	
<b>INCOMPLETE PLANS</b> DO NOT USE FOR R/W ACQUISITION	

-L-  
 PI Sta 19+64.99  
 $\Delta = 0' 54' 36.4" (LT)$   
 $D = 0' 42' 58.3"$   
 $L = 127.08'$   
 $T = 63.54'$   
 $R = 8,000.00'$   
 $SE = NC$



**DATUM DESCRIPTION**  
 THE LOCALIZED COORDINATE SYSTEM DEVELOPED FOR THIS PROJECT IS BASED ON THE STATE PLANE COORDINATES ESTABLISHED BY MONUMENT "B3700-1" WITH HAD 1983/95 STATE PLANE GRID COORDINATES OF NORTHING: 601573.085(1) EASTING: 1625861.040(1) THE AVERAGE COMBINED GRID FACTOR USED ON THIS PROJECT (GROUND TO GRID) IS: 0.99985593 THE N.C. LAMBERT GRID BEARING AND LOCALIZED HORIZONTAL GROUND DISTANCE FROM "B3700-1" TO -L- STATION 13+05 IS N 55° 11' 47.5" E DIST 66450.6(1) ALL LINEAR DIMENSIONS ARE LOCALIZED HORIZONTAL DISTANCES VERTICAL DATUM USED IS NAVD 88