

REVISIONS
1. ADDED "UTILITY CONSTRUCTION DRAWINGS" 3-10-05

③
ROSALIE BANKS PEACOCK, et vir
DB 213 - PG 863
MB 11 - PG 93

⑤
JEANNETTE BANKS HUDSON, et vir
DB 213 - PG 853
MB 11 - PG 93

METRIC

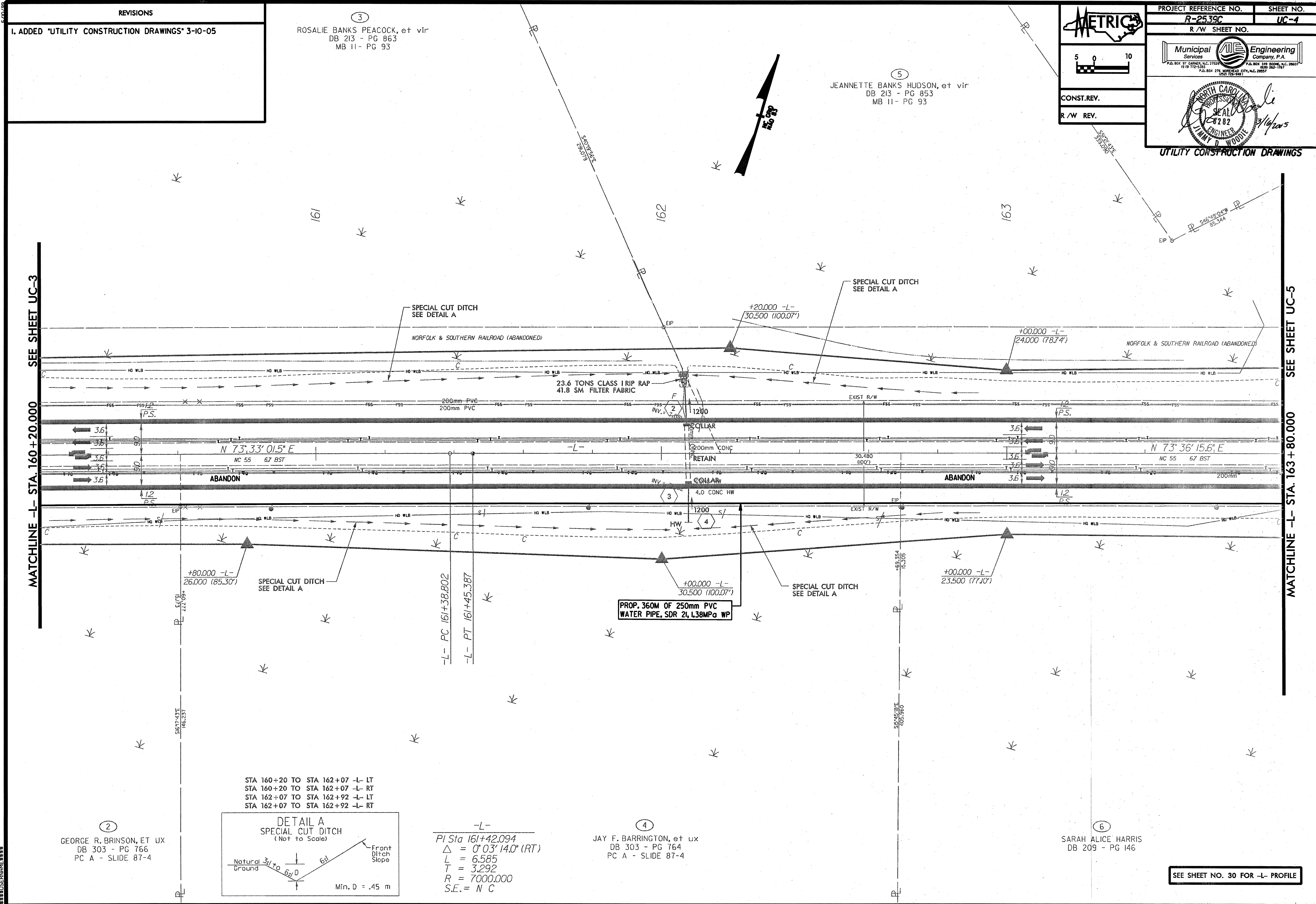
PROJECT REFERENCE NO. **R-2539C** SHEET NO. **UC-4**
R/W SHEET NO.

Municipal Engineering Services Company, P.A.
P.O. BOX 87 CARMEL, N.C. 27525 P.O. BOX 149 ROAKE, N.C. 28667
PH: 717-335-3300 FAX: 717-335-3301
P.O. BOX 278 MORFISBORO CITY, N.C. 28557 (703) 525-7881

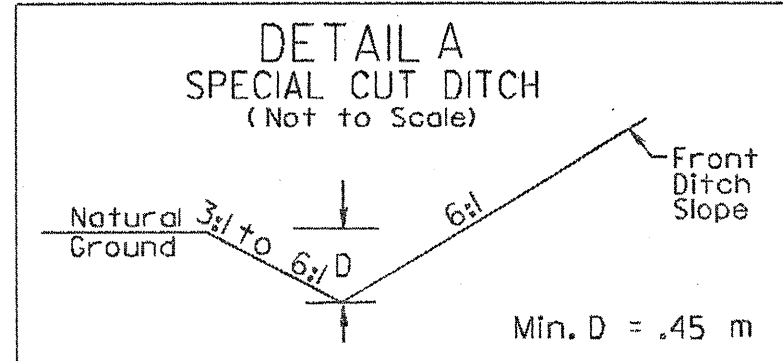
CONST. REV.
R/W REV.

PROFESSIONAL SEAL
JIMMY D. WOODLI
ENGINEER
3/16/2005

UTILITY CONSTRUCTION DRAWINGS



②
GEORGE R. BRINSON, ET UX
DB 303 - PG 766
PC A - SLIDE 87-4



-L-
PI Sta 161+42.094
 $\Delta = 0^{\circ} 03' 14.0''$ (RT)
L = 6.585
T = 3.292
R = 7000.000
S.E. = N C

④
JAY F. BARRINGTON, et ux
DB 303 - PG 764
PC A - SLIDE 87-4

⑥
SARAH ALICE HARRIS
DB 209 - PG 146

SEE SHEET NO. 30 FOR -L- PROFILE