

**REVISIONS**

1. REVISED PER BRMSD COMMENTS 2/1/05.
2. REVISED PER BRMSD COMMENTS 2/28/05.

**METRIC**

PROJECT REFERENCE NO. **R-2539C** SHEET NO. **UC-12**

R/W SHEET NO.

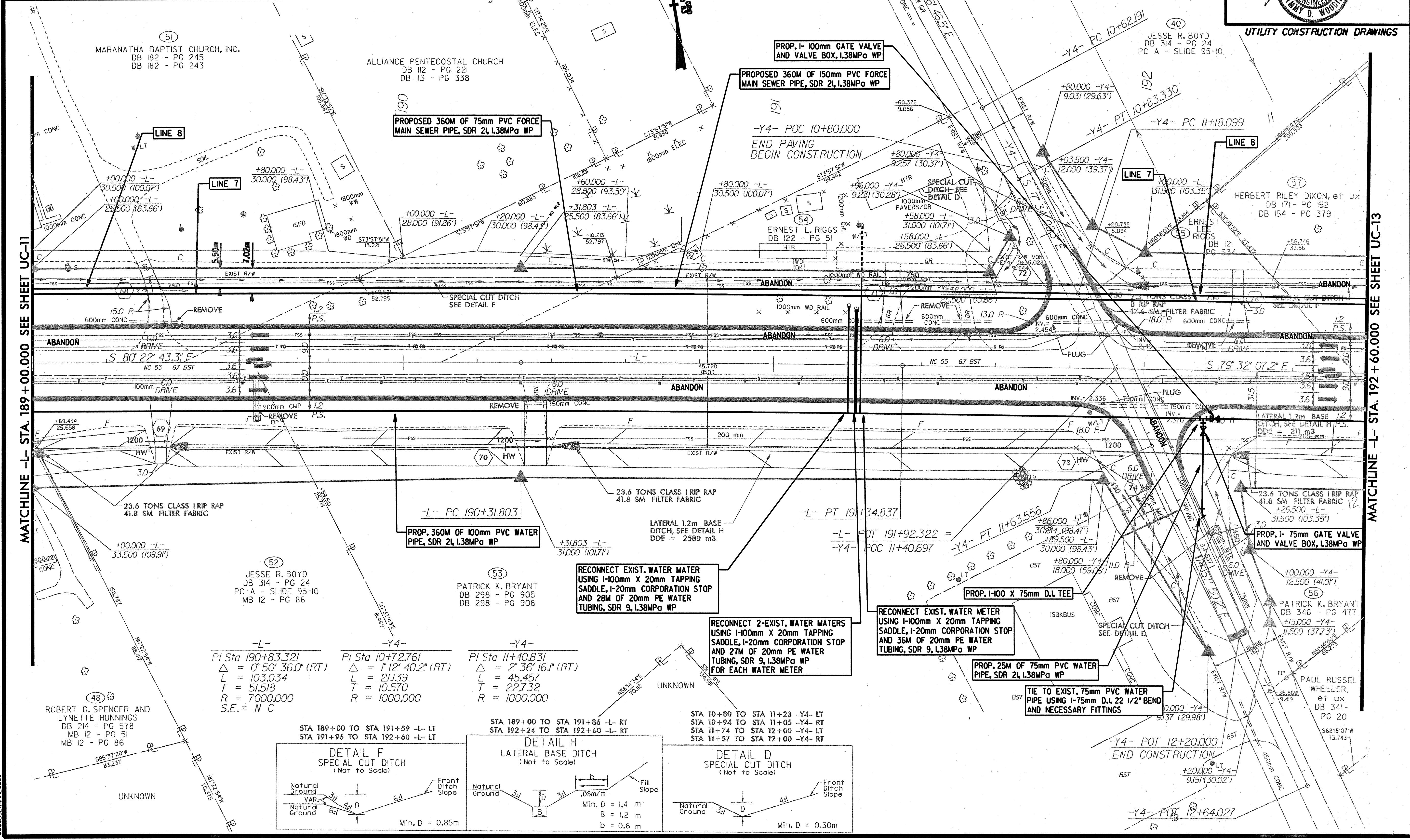
**Municipal Engineering**

Professional Seal: **JIMMY D. WOODIE**, ENGINEER, No. 47282, dated 3/16/2005.

CONST. REV.

R/W REV.

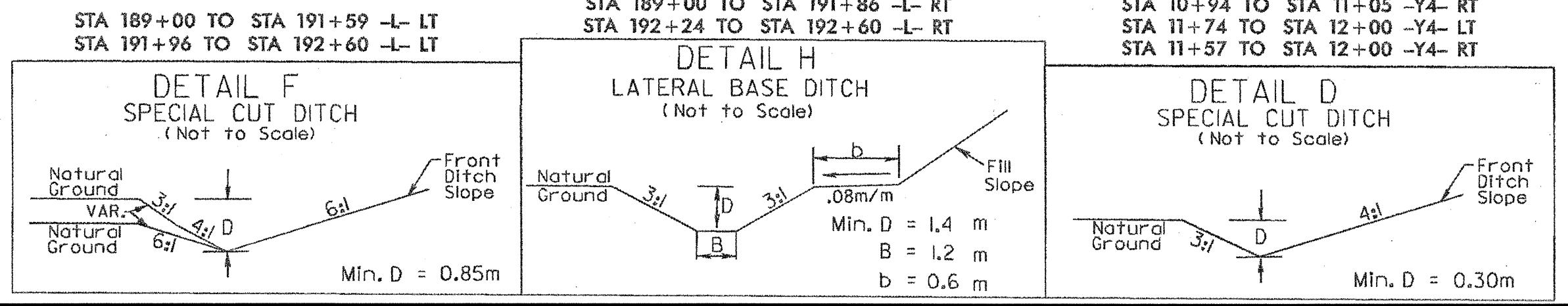
**UTILITY CONSTRUCTION DRAWINGS**



MATCHLINE -L- STA. 189 + 00.000 SEE SHEET UC-11

MATCHLINE -L- STA. 192 + 60.000 SEE SHEET UC-13

-L-	-Y4-	-Y4-
PI Sta 190+83.321	PI Sta 10+72.761	PI Sta 11+40.831
$\Delta = 0^{\circ} 50' 36.0''$ (RT)	$\Delta = 1^{\circ} 12' 40.2''$ (RT)	$\Delta = 2^{\circ} 36' 16.1''$ (RT)
L = 103.034	L = 211.39	L = 45.457
T = 51.518	T = 10.570	T = 22.732
R = 7000.000	R = 1000.000	R = 1000.000
S.E. = N C		



STA 189+00 TO STA 191+59 -L- LT  
STA 191+96 TO STA 192+60 -L- LT

STA 189+00 TO STA 191+86 -L- RT  
STA 192+24 TO STA 192+60 -L- RT

STA 10+80 TO STA 11+23 -Y4- LT  
STA 10+94 TO STA 11+05 -Y4- RT  
STA 11+74 TO STA 12+00 -Y4- LT  
STA 11+57 TO STA 12+00 -Y4- RT