

REVISIONS

1. REVISED PER BRMSD COMMENTS 2/1/05.
 2. REVISED PER BRMSD COMMENTS 2/28/05.

-Y5-
 PI Sta 10+94.810
 $\Delta = 7' 58" 16.7" (LT)$
 $L = 62.607$
 $T = 31.354$
 $R = 450.000$

-Y5-
 PI Sta 12+07.553
 $\Delta = 36' 20" 27.7" (RT)$
 $L = 69.770$
 $T = 36.103$
 $R = 110.000$

MARGRETT ANNE
 ARNOLD SANDERS
 DB 330 - PG 308

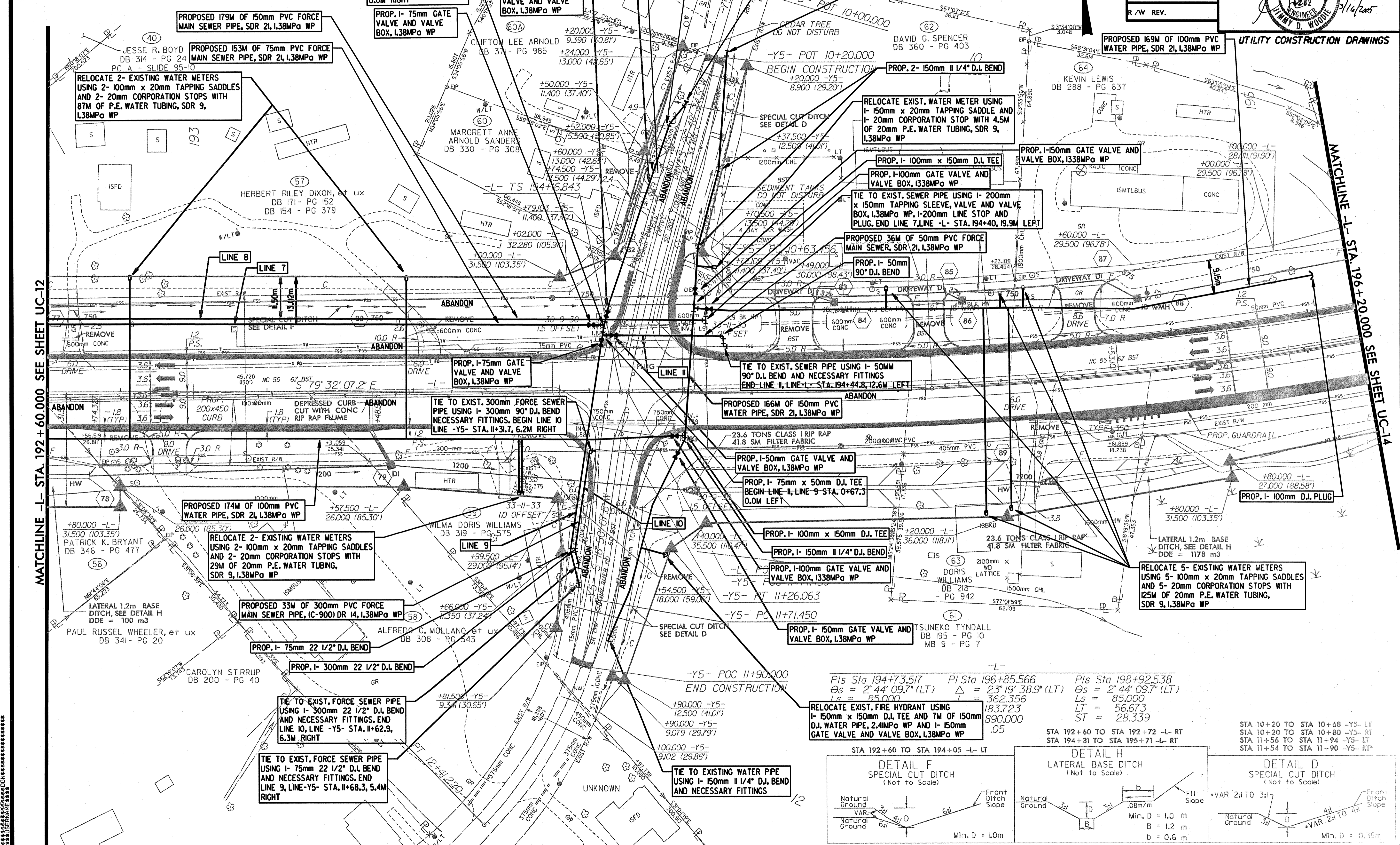
PROJECT REFERENCE NO. **R-2539C** SHEET NO. **UC-13**

R/W SHEET NO.

Municipal Engineering Company, P.A.

Professional Seal: **W. D. WOODIE**, ENGINEER, No. 1142

CONST. REV. _____ R/W REV. _____



MATCHLINE -L- STA. 192 + 60.000 SEE SHEET UC-12

MATCHLINE -L- STA. 196 + 20.000 SEE SHEET UC-14

Pls Sta 194+73.517 PI Sta 196+85.566 Pls Sta 198+92.538
 $\Delta_s = 2' 44" 09.7" (LT)$ $\Delta = 23' 19" 38.9" (LT)$ $\Delta_s = 2' 44" 09.7" (LT)$
 $L_s = 85.000$ $L = 362.356$ $L_s = 85.000$
 $T = 183.723$ $T = 890.000$ $T = 56.673$
 $ST = 28.339$

