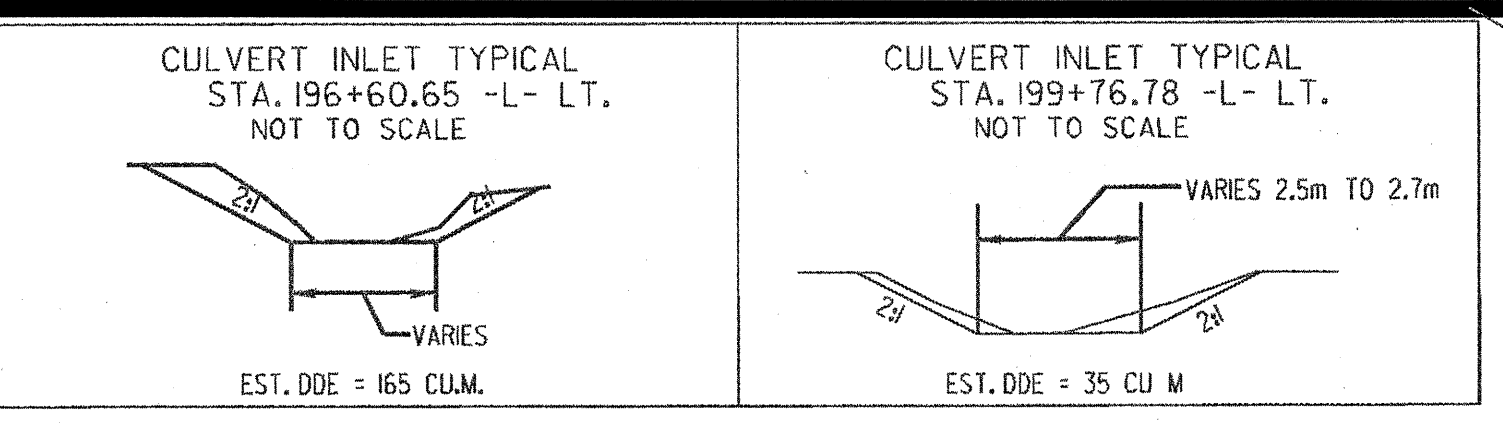
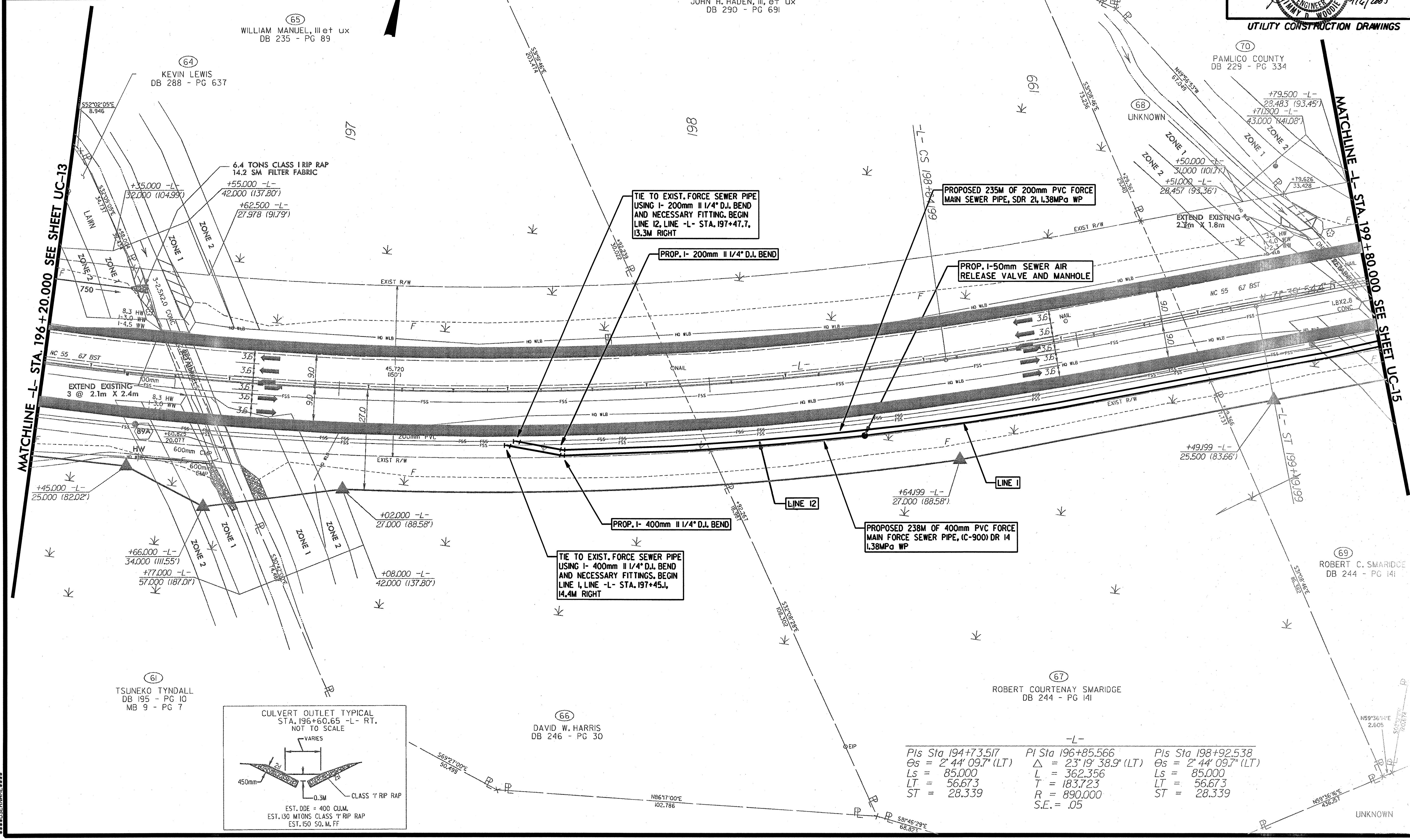


REVISIONS
 I. REVISED PER BRMSD COMMENTS 2/28/05



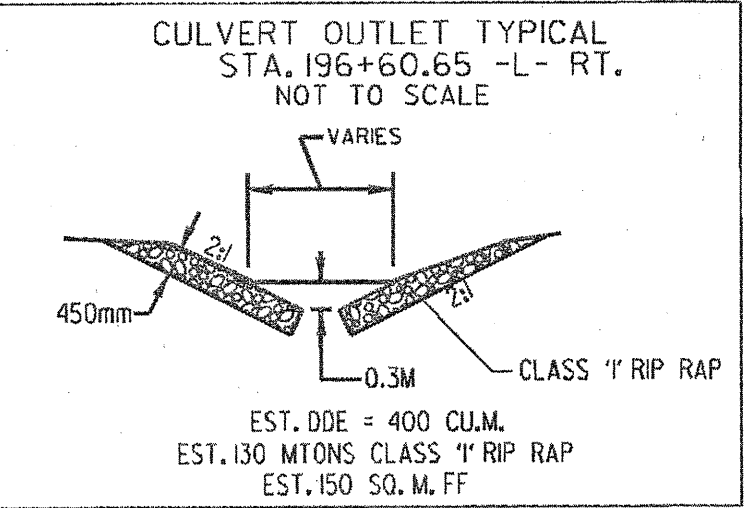
PROJECT REFERENCE NO. **R-2539C** SHEET NO. **UC-14**
 R/W SHEET NO.
 METRIC
 5 0 10
 CONST. REV.
 R/W REV.
 MUNICIPAL ENGINEERING
 Services Company, P.A.
 P.O. BOX 91 CARMEL, N.C. 27521 P.A. BOX 248 BOONE, N.C. 28601
 (704) 772-2300 (800) 842-1167
 (704) 772-2300 (800) 842-1167
 NORTH CAROLINA PROFESSIONAL ENGINEER
 SEAL - 6282
 JIMMY D. WOODIE
 3/16/2005
 UTILITY CONSTRUCTION DRAWINGS



MATCHLINE -L- STA. 196+20.00 SEE SHEET UC-13

MATCHLINE -L- STA. 199+80.00 SEE SHEET UC-15

DATE PLOTTED: 03/16/05 10:00 AM
 PLOTTER: HP DesignJet 5000PS



-L-	-L-	-L-
Pls Sta 194+73.517	Pls Sta 196+85.566	Pls Sta 198+92.538
Os = 2' 44" 09.7" (LT)	Δ = 23' 19" 38.9" (LT)	Os = 2' 44" 09.7" (LT)
Ls = 85,000	L = 362.356	Ls = 85,000
LT = 56.673	T = 183.723	LT = 56.673
ST = 28.339	R = 890,000	ST = 28.339
	S.E. = .05	

(65) WILLIAM MANUEL, III et ux
 DB 235 - PG 89
 (64) KEVIN LEWIS
 DB 288 - PG 637

JOHN H. HADEN, III, et ux
 DB 290 - PG 691

(TO) PAMLICO COUNTY
 DB 229 - PG 334

(61) TSUNEKO TYNDALL
 DB 195 - PG 10
 MB 9 - PG 7

(66) DAVID W. HARRIS
 DB 246 - PG 30

(67) ROBERT COURTENAY SMARIDGE
 DB 244 - PG 141

(69) ROBERT C. SMARIDGE
 DB 244 - PG 141