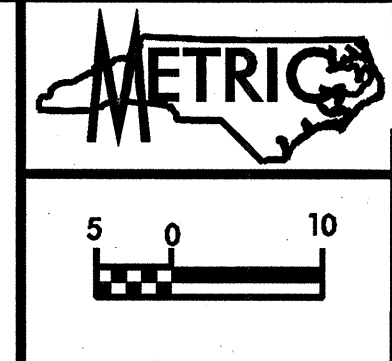


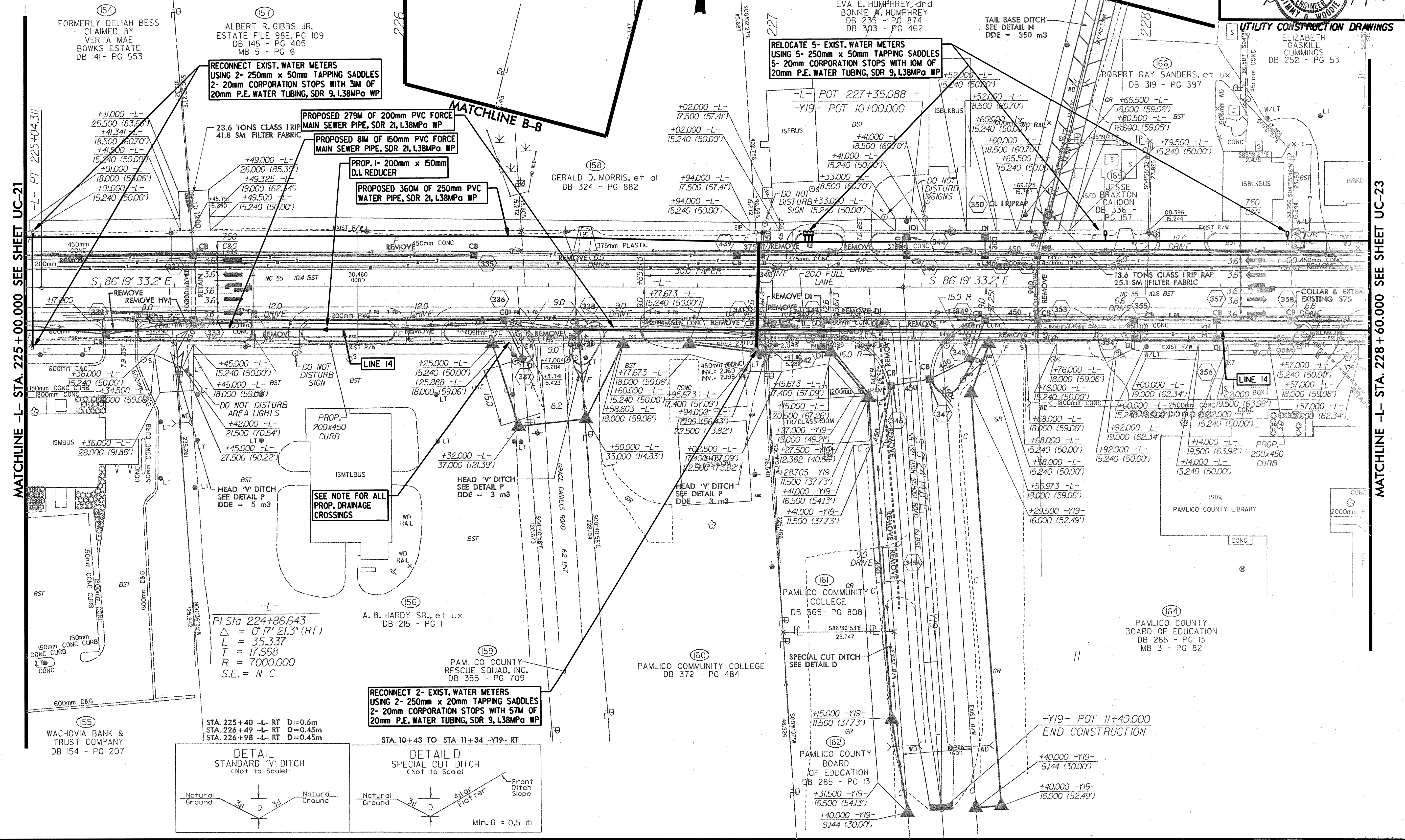
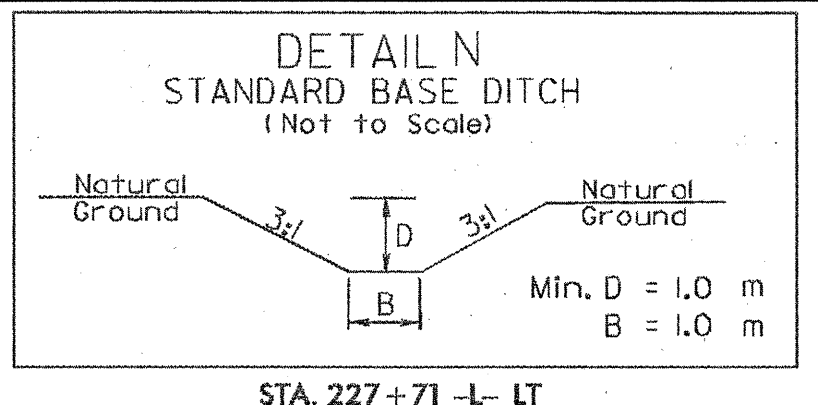
NOTES / REVISIONS

- THE PROPOSED DRAINAGE DROP INLETS SHALL BE A MAXIMUM DEPTH INVERT OF 0.686M. THE CONTRACTOR SHALL WRAP EXISTING 200mm AND 400mm FORCE SEWER PIPE RIGHT OF LINE -L- WITH CLASS B CONCRETE WHICH HAVE A MINIMUM CLEARANCE WITH THE PROPOSED DRAINAGE (SEE DETAILS). IN CASES WHERE THERE ARE DIRECT CONFLICTS WITH THE PROPOSED DRAINAGE, THE CONTRACTOR SHALL LOWER OR RELOCATE THE EXISTING 200mm AND 400mm FORCE SEWER (SEE DETAILS). THE NECESSARY QUANTITIES HAVE BEEN ADDED TO THE CONTRACT TO FACILITATE THESE PROCEDURES.
- REVISED PER BRMSD COMMENTS 2/28/05



PROJECT REFERENCE NO. R-2539C SHEET NO. UC-22
 R/W SHEET NO.
 Municipal Engineering Services Company, P.A.
 P.O. Box 97, Garner, N.C. 27533
 P.O. Box 276, Raleigh, N.C. 27602
 P.O. Box 100, Durham, N.C. 27601

ELIZABETH GASKILL CUMMINGS DB 252 - PG 53
 JIMMY D. WOODIE 3/16/05



MATCHLINE -L- STA. 225+00.000 SEE SHEET UC-21

MATCHLINE -L- STA. 228+60.000 SEE SHEET UC-23