

**NOTES**

1. THE PROPOSED DRAINAGE DROP INLETS SHALL BE A MAXIMUM DEPTH INVERT OF 0.686M. THE CONTRACTOR SHALL WRAP EXISTING 200mm AND 400mm FORCE SEWER PIPE RIGHT OF LINE -L- WITH CLASS B CONCRETE WHICH HAVE A MINIMUM CLEARANCE WITH THE PROPOSED DRAINAGE (SEE DETAILS). IN CASES WHERE THERE ARE DIRECT CONFLICTS WITH THE PROPOSED DRAINAGE, THE CONTRACTOR SHALL LOWER OR RELOCATE THE EXISTING 200mm AND 400mm FORCE SEWER (SEE DETAILS). THE NECESSARY QUANTITIES HAVE BEEN ADDED TO THE CONTRACT TO FACILITATE THESE PROCEDURES.

2. REVISED PER BRMSD COMMENTS 2/28/05.

PROJECT REFERENCE NO. **R-2539C** SHEET NO. **UC-24**  
 R/W SHEET NO.

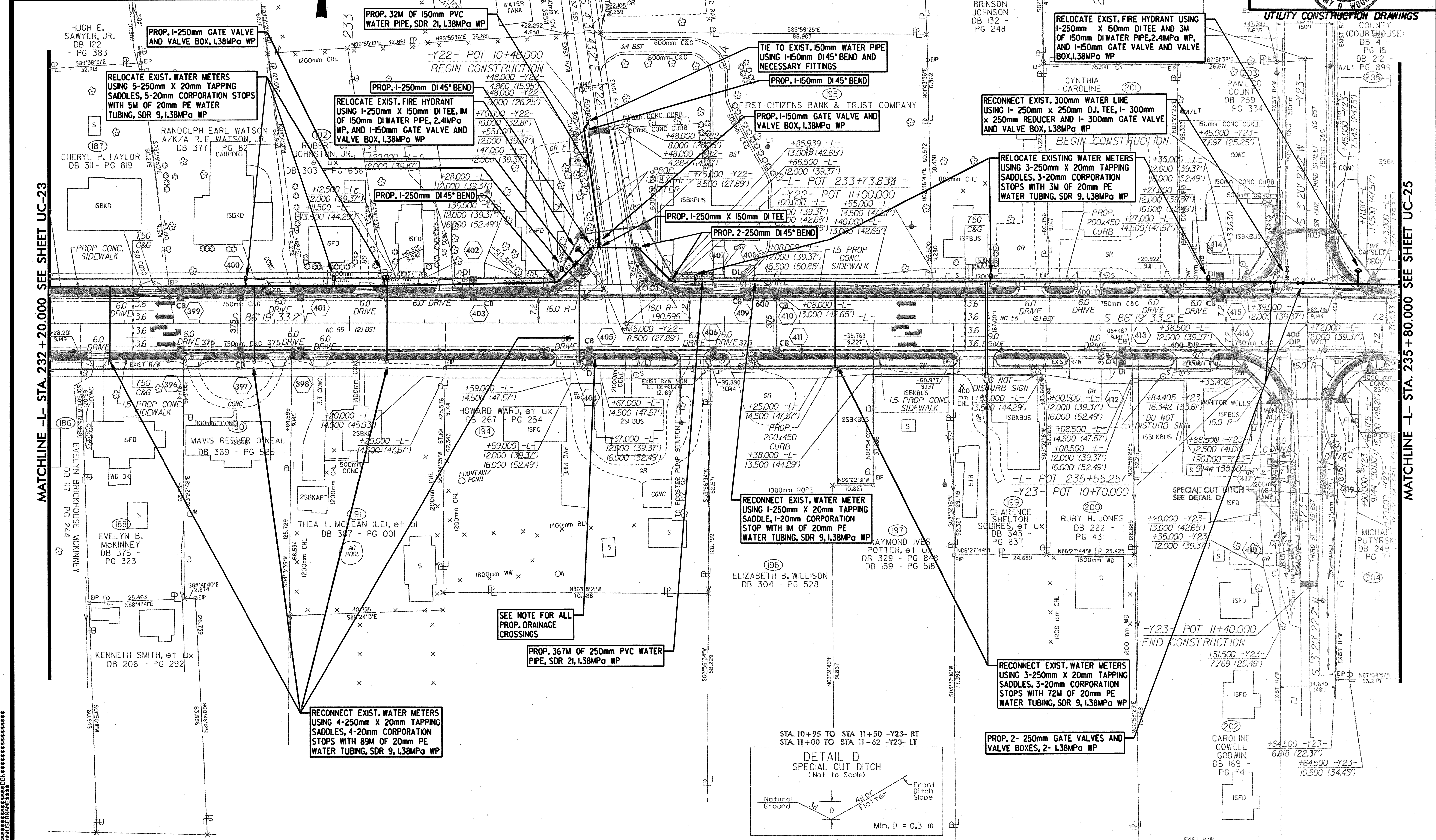
**Municipal Engineering**  
 Services Company, P.A.  
 P.O. BOX 37 GARNER, N.C. 27524  
 1919 772-2300 FAX 772-2301  
 P.O. BOX 2771 RALEIGH, N.C. 27602  
 919 833-1167 FAX 919 833-1167

**REV. 1-5-05 RECONNECT 300mm WATER LINE**

**UTILITY CONSTRUCTION DRAWINGS**

COUNTY (COURT HOUSE)  
 DB 4  
 PG 15  
 DB 212  
 PG 15  
 DB 215  
 PG 15  
 DB 216  
 PG 15  
 DB 217  
 PG 15  
 DB 218  
 PG 15  
 DB 219  
 PG 15  
 DB 220  
 PG 15  
 DB 221  
 PG 15  
 DB 222  
 PG 15  
 DB 223  
 PG 15  
 DB 224  
 PG 15  
 DB 225  
 PG 15  
 DB 226  
 PG 15  
 DB 227  
 PG 15  
 DB 228  
 PG 15  
 DB 229  
 PG 15  
 DB 230  
 PG 15

**3/16/2005**



MATCHLINE -L- STA. 232 + 20.000 SEE SHEET UC-23

MATCHLINE -L- STA. 235 + 80.000 SEE SHEET UC-25

