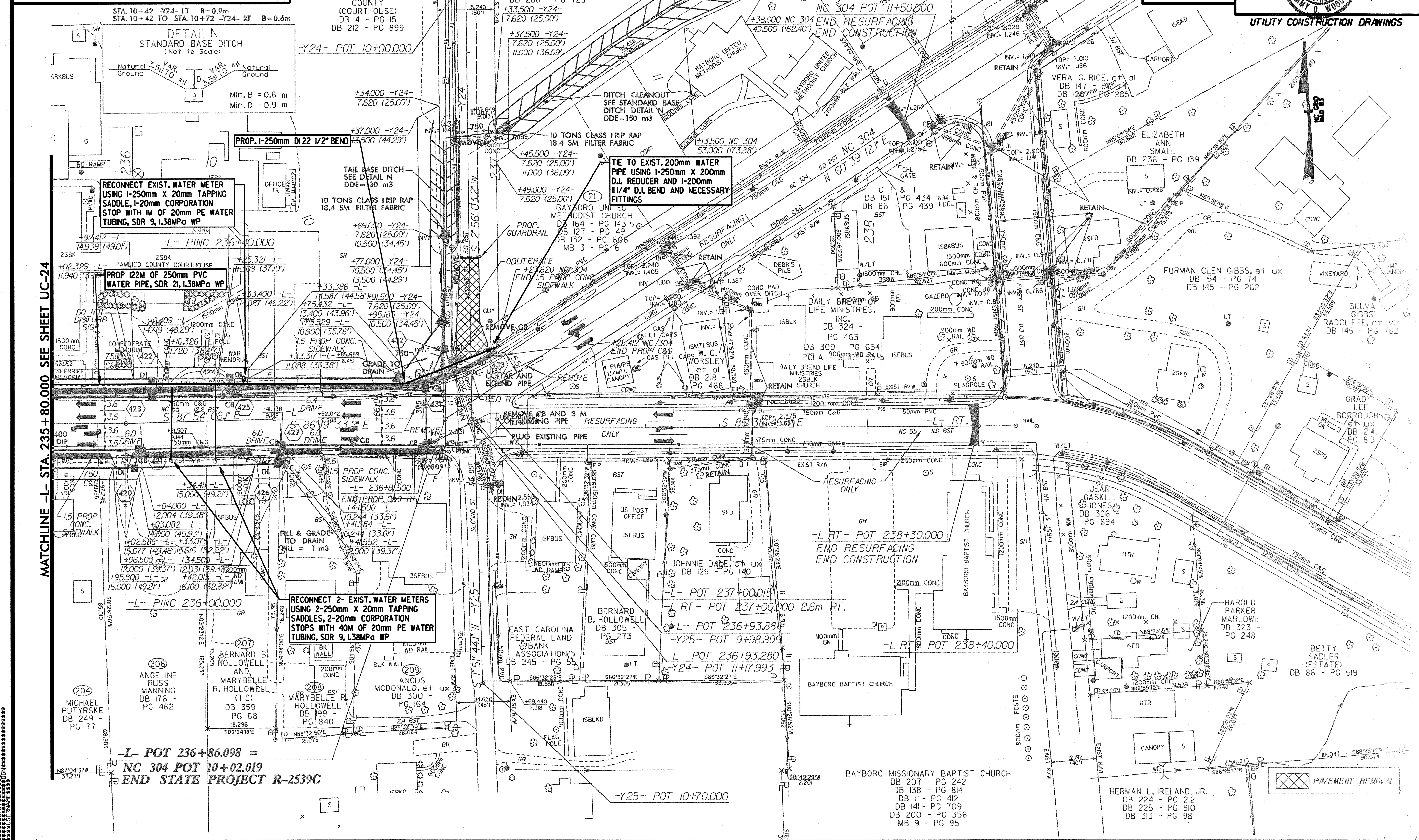


NOTES

- 1. THE PROPOSED DRAINAGE DROP INLETS SHALL BE A MAXIMUM DEPTH INVERT OF 0.686M. THE CONTRACTOR SHALL WRAP EXISTING 200mm AND 400mm FORCE SEWER PIPE RIGHT OF LINE -L- WITH CLASS B CONCRETE WHICH HAVE A MINIMUM CLEARANCE WITH THE PROPOSED DRAINAGE (SEE DETAILS). IN CASES WHERE THERE ARE DIRECT CONFLICTS WITH THE PROPOSED DRAINAGE, THE CONTRACTOR SHALL LOWER OR RELOCATE THE EXISTING 200mm AND 400mm FORCE SEWER (SEE DETAILS). THE NECESSARY QUANTITIES HAVE BEEN ADDED TO THE CONTRACT TO FACILITATE THESE PROCEDURES.
- 2. REVISED PER BRMSD COMMENTS 2/28/05.

METRIC
 PROJECT REFERENCE NO. **R-2539C** SHEET NO. **UC-25**
 R/W SHEET NO.
 Municipal Engineering Company, P.A.
 P.A. BOX 31 CARRYSVILLE, N.C. 27521
 P.O. BOX 349 BOONE, N.C. 28607
 813.753.3333 FAX 813.753.3330
 813.753.3333 FAX 813.753.3330
 CONST. REV. _____
 R/W REV. _____
 LARRY D. WOOLFE
 ENGINEER
 SEAL 6282
 1/16/05
UTILITY CONSTRUCTION DRAWINGS



MATCHLINE -L- STA. 235+80.000 SEE SHEET UC-24

-L- POT 236+86.098 =
NC 304 POT 10+02.019
END STATE PROJECT R-2539C

PAVEMENT REMOVAL