

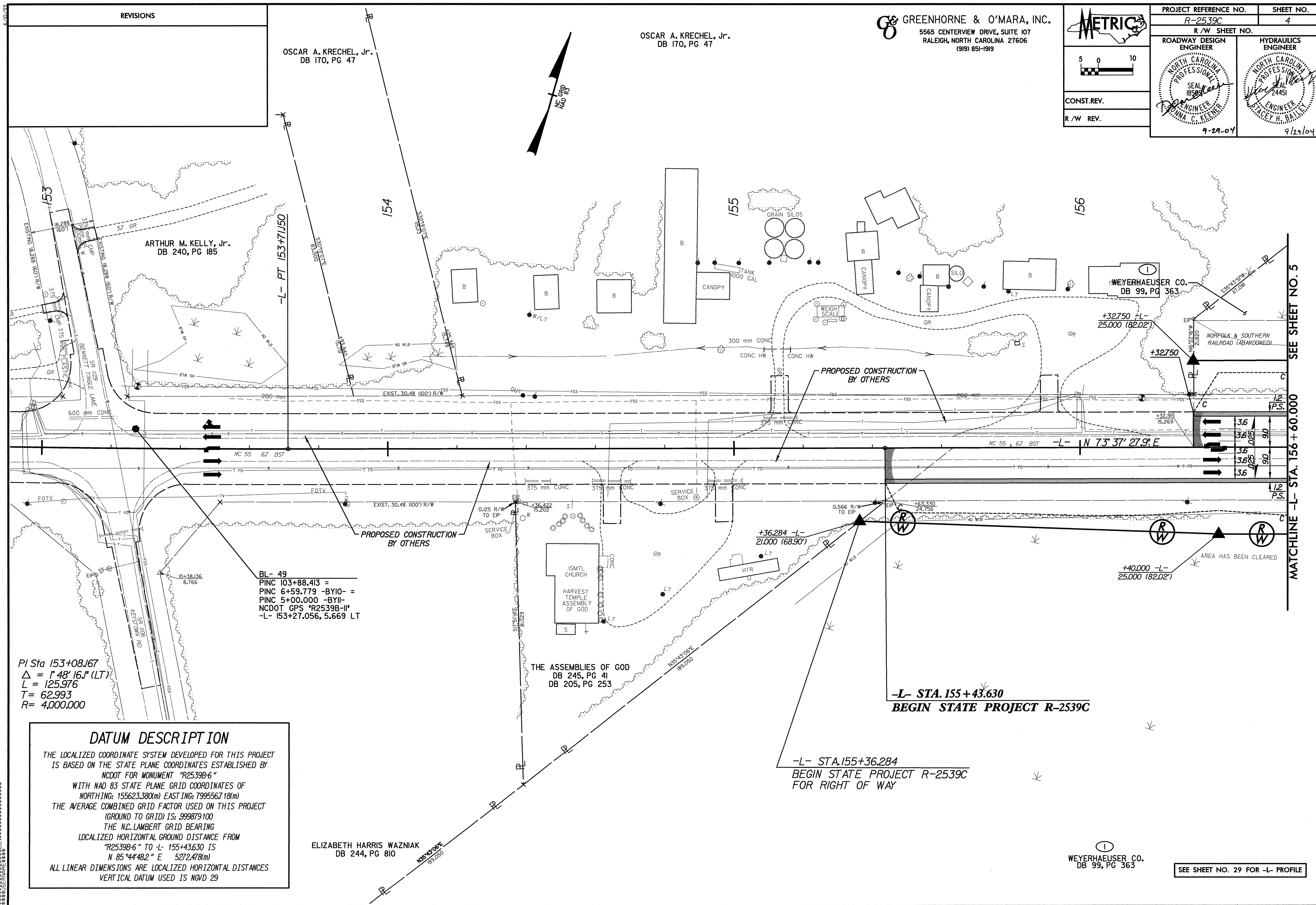
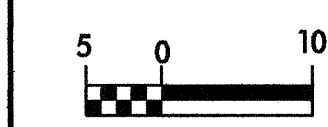
REVISIONS

OSCAR A. KRECHEL, Jr.
DB 170, PG 47

OSCAR A. KRECHEL, Jr.
DB 170, PG 47

GREENHORNE & O'MARA, INC.
5565 CENTERVIEW DRIVE, SUITE 107
RALEIGH, NORTH CAROLINA 27606
(919) 851-1919

PROJECT REFERENCE NO. R-2539C		SHEET NO. 4	
R/W SHEET NO.			
ROADWAY DESIGN ENGINEER		HYDRAULICS ENGINEER	
CONST. REV.		9-29-04	
R/W REV.		9/29/04	



PI Sta 153+08.167
 $\Delta = 1' 48" 16.1" (LT)$
 $L = 125.976$
 $T = 62.993$
 $R = 4,000.000$

DATUM DESCRIPTION
 THE LOCALIZED COORDINATE SYSTEM DEVELOPED FOR THIS PROJECT IS BASED ON THE STATE PLANE COORDINATES ESTABLISHED BY NCDOT FOR MONUMENT "R2539B-6" WITH NAD 83 STATE PLANE GRID COORDINATES OF NORTHING: 155623.380(m) EASTING: 7995567.18(m) THE AVERAGE COMBINED GRID FACTOR USED ON THIS PROJECT (GROUND TO GRID) IS: 999879100 THE N.C. LAMBERT GRID BEARING LOCALIZED HORIZONTAL GROUND DISTANCE FROM "R2539B-6" TO -L- 155+43.630 IS N 85°44'48.2" E 5272.478(m) ALL LINEAR DIMENSIONS ARE LOCALIZED HORIZONTAL DISTANCES VERTICAL DATUM USED IS NGVD 29

BL- 49
 PINC 103+88.413 =
 PINC 6+59.779 -BY10- =
 PINC 5+00.000 -BY11-
 NCDOT GPS "R2539B-II"
 -L- 153+27.056, 5.669 LT

ELIZABETH HARRIS WAZNIAK
 DB 244, PG 810

-L- STA. 155+43.630
BEGIN STATE PROJECT R-2539C

-L- STA. 155+36.284
BEGIN STATE PROJECT R-2539C
FOR RIGHT OF WAY

WEYERHAEUSER CO.
 DB 99, PG 363

SEE SHEET NO. 29 FOR -L- PROFILE

SEE SHEET NO. 5
 MATCHLINE -L- STA. 156 + 60.000