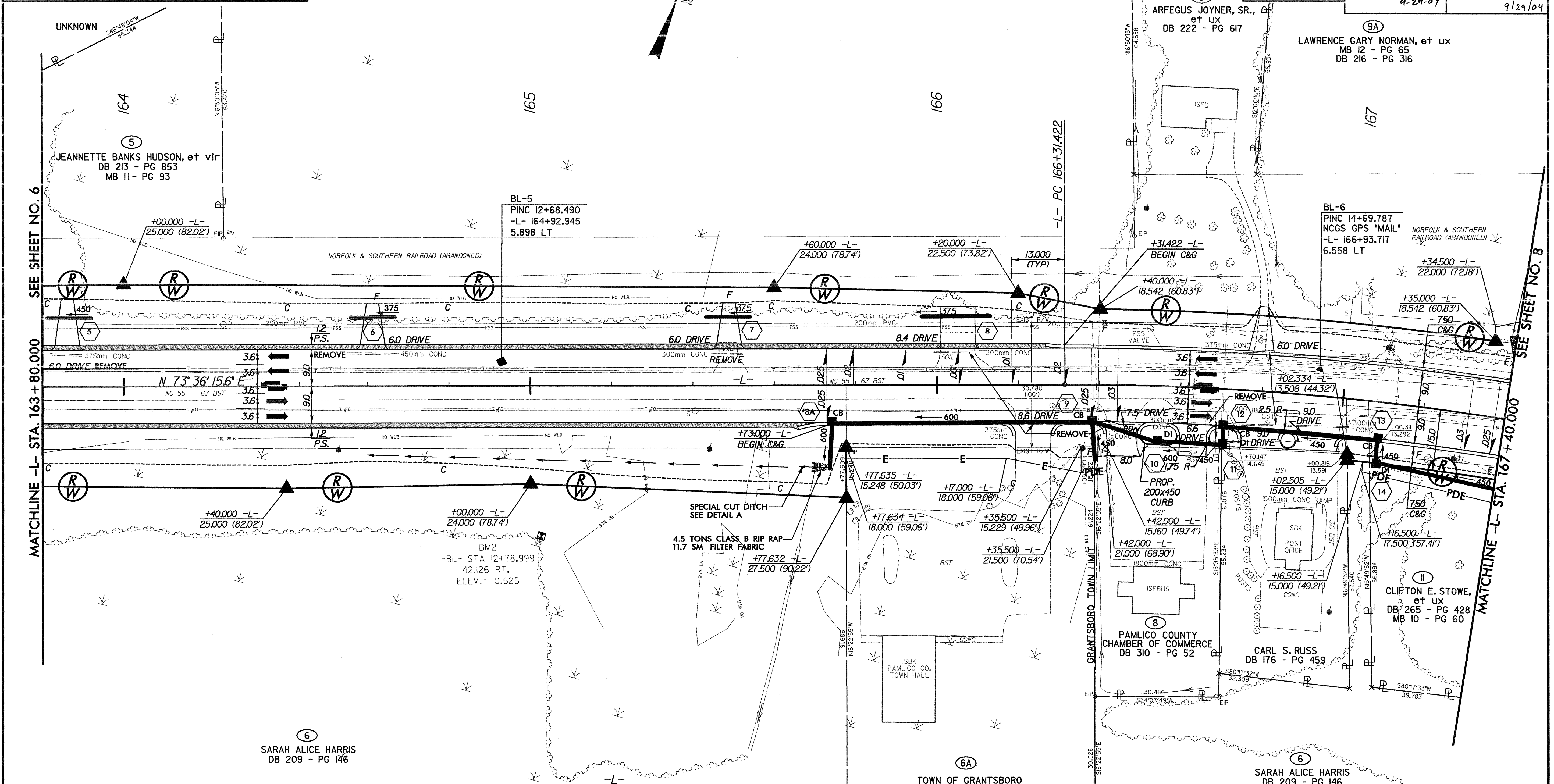


REVISIONS

GREENHORNE & O'MARA, INC.
 5565 CENTERVIEW DRIVE, SUITE 107
 RALEIGH, NORTH CAROLINA 27606
 (919) 851-1919

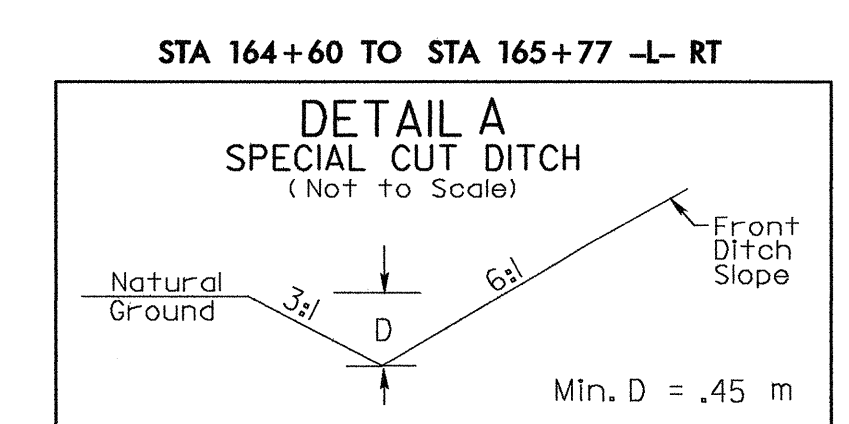
PROJECT REFERENCE NO. R-2539C		SHEET NO. 7	
R/W SHEET NO.			
ROADWAY DESIGN ENGINEER NORTH CAROLINA PROFESSIONAL SEAL WONN C. KEENER 9-29-04		HYDRAULICS ENGINEER NORTH CAROLINA PROFESSIONAL SEAL STACEY H. BAILEY 9/29/04	
CONST. REV.		R/W REV.	

7
 MYRON M. BANKS, JR., et ux
 DB 213 - PG 857
 MB 11 - PG 93



SEE SHEET NO. 6
 MATCHLINE -L- STA. 163 + 80.000

SEE SHEET NO. 8
 MATCHLINE -L- STA. 167 + 40.000



-L-
 PI Sta 166+87.935
 $\Delta = 9' 30'' 05.5'' (RT)$
 $L = 112.766$
 $T = 56.513$
 $R = 680.000$
 $S.E. = .03$
 $R'OFF = 39.0$

- NOTES:
1. DRIVES IN SHOULDER SECTION, RADIUS = 1.5m @ E.O.P. (UNLESS OTHERWISE NOTED ON PLANS).
 2. ALL DRIVES IN CURB AND GUTTER SECTIONS ARE RADIUS TYPE DRIVEWAYS WITH A 0.9m RADIUS @ FACE OF CURB (UNLESS OTHERWISE NOTED ON PLANS).
 3. CHANNELIZATION RADIUS = 2.975m @ E.O.P. (UNLESS OTHERWISE NOTED ON PLANS).
 4. OFFSET FROM R/W TO 200x450 CURB = 0.0m (TYP.).

SEE SHEET NO. 30 FOR -L- PROFILE