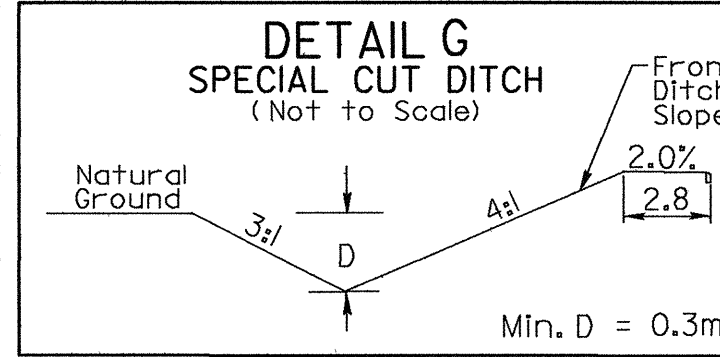
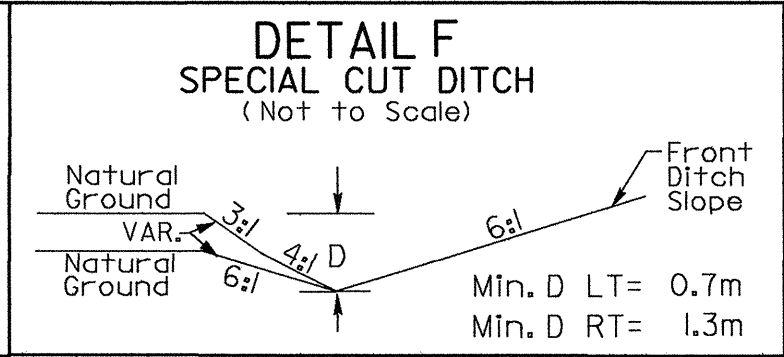


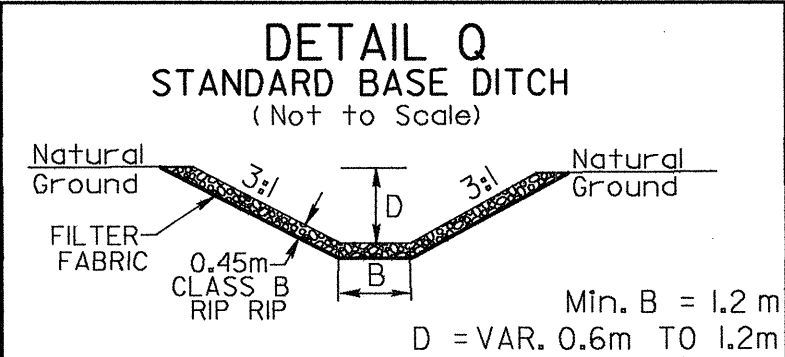
REVISIONS



STA 179+70 TO STA 180+89 -L- RT



STA 178+20 TO STA 181+80 -L- LT
STA 178+21 TO STA 179+00 -L- RT
STA 181+65 TO STA 181+80 -L- RT



STA 181+61 -L- RT

GREENHORNE & O'MARA, INC.
5565 CENTERVIEW DRIVE, SUITE 107
RALEIGH, NORTH CAROLINA 27606
(919) 851-1919

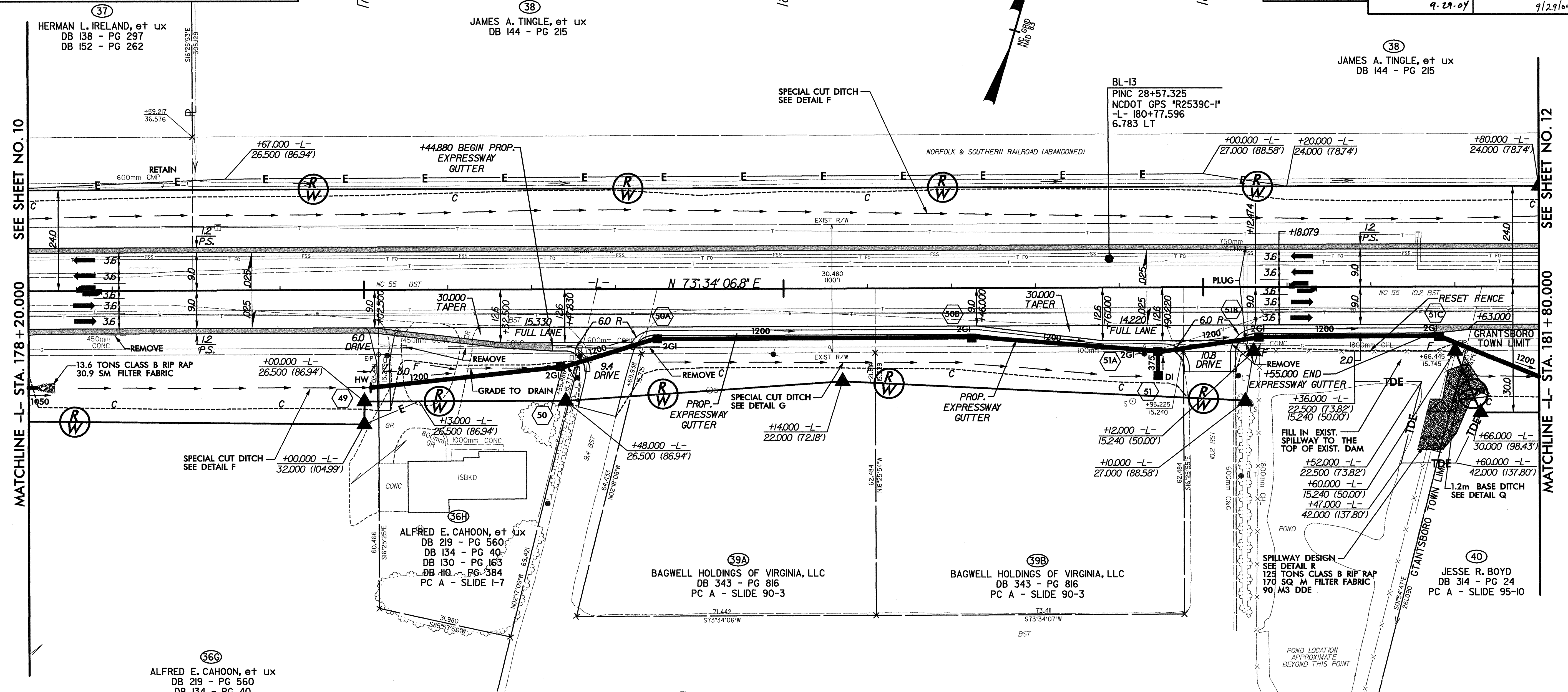
METRIC

5 0 10

CONST. REV.

R/W REV.

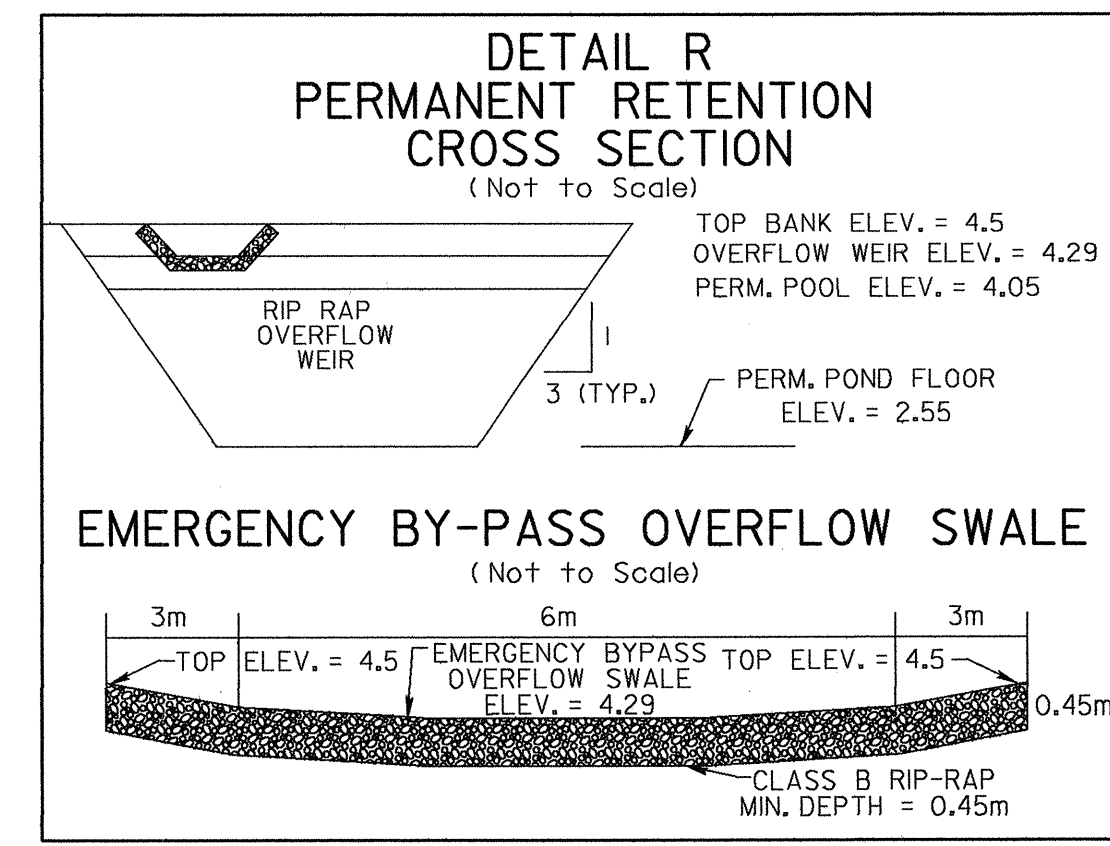
PROJECT REFERENCE NO. R-2539C	SHEET NO. 11
R/W SHEET NO.	
ROADWAY DESIGN ENGINEER NORTH CAROLINA PROFESSIONAL SEAL 18504 JOHN G. KEEFER	HYDRAULICS ENGINEER NORTH CAROLINA PROFESSIONAL SEAL 24451 JAMES H. BAILEY
9-29-04	9/29/04



SEE SHEET NO. 10
MATCHLINE -L- STA. 178 + 20.000

SEE SHEET NO. 12
MATCHLINE -L- STA. 181 + 80.000

- NOTES:
1. DRIVES IN SHOULDER SECTION, RADIUS = 1.5m @ E.O.P. (UNLESS OTHERWISE NOTED ON PLANS).
 2. OFFSET FROM E.O.P. TO 200x450 CURB = 1.8m (TYP.).
 3. RESET FENCE ALONG THE POND IN THE AREA OF THE TDE ONCE WORK ON THE SPILLWAY IS COMPLETED.



SEE SHEET NO. 32 FOR -L- PROFILE