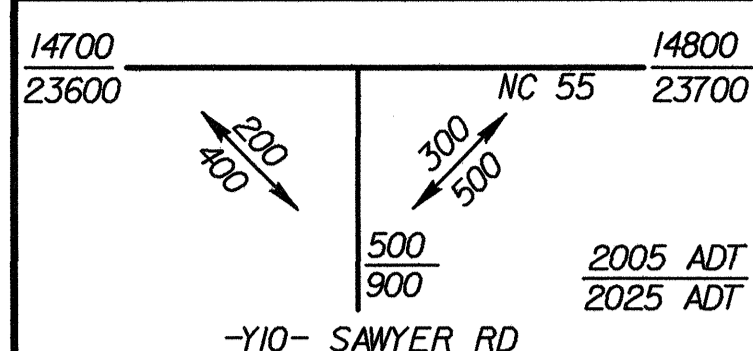
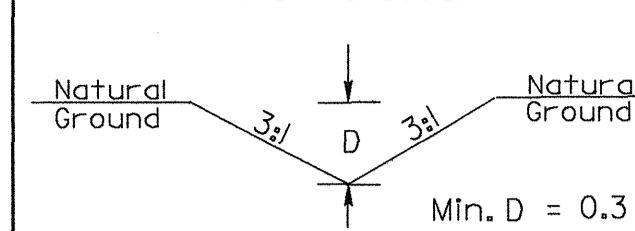


REVISIONS

DETAIL P
STANDARD 'V' DITCH
(Not to Scale)



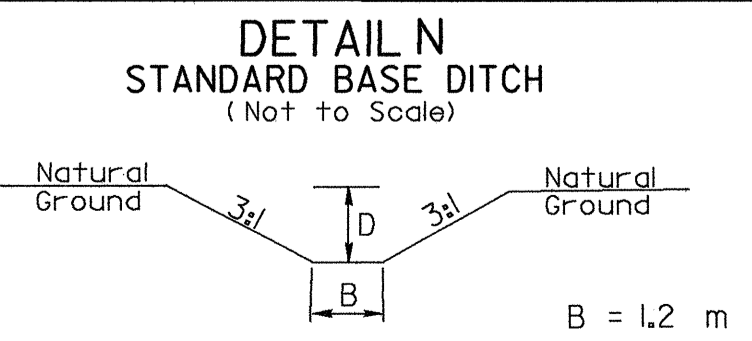
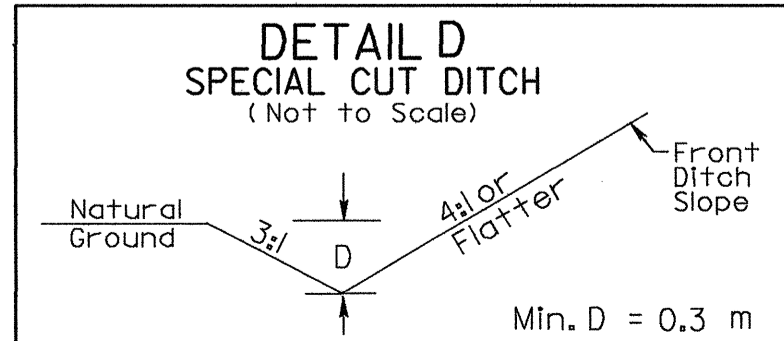
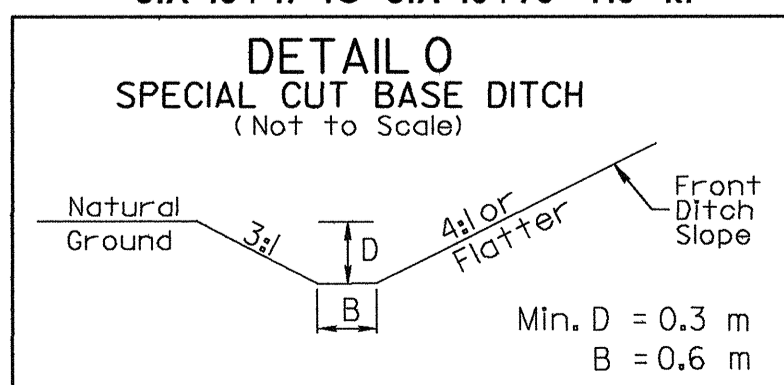
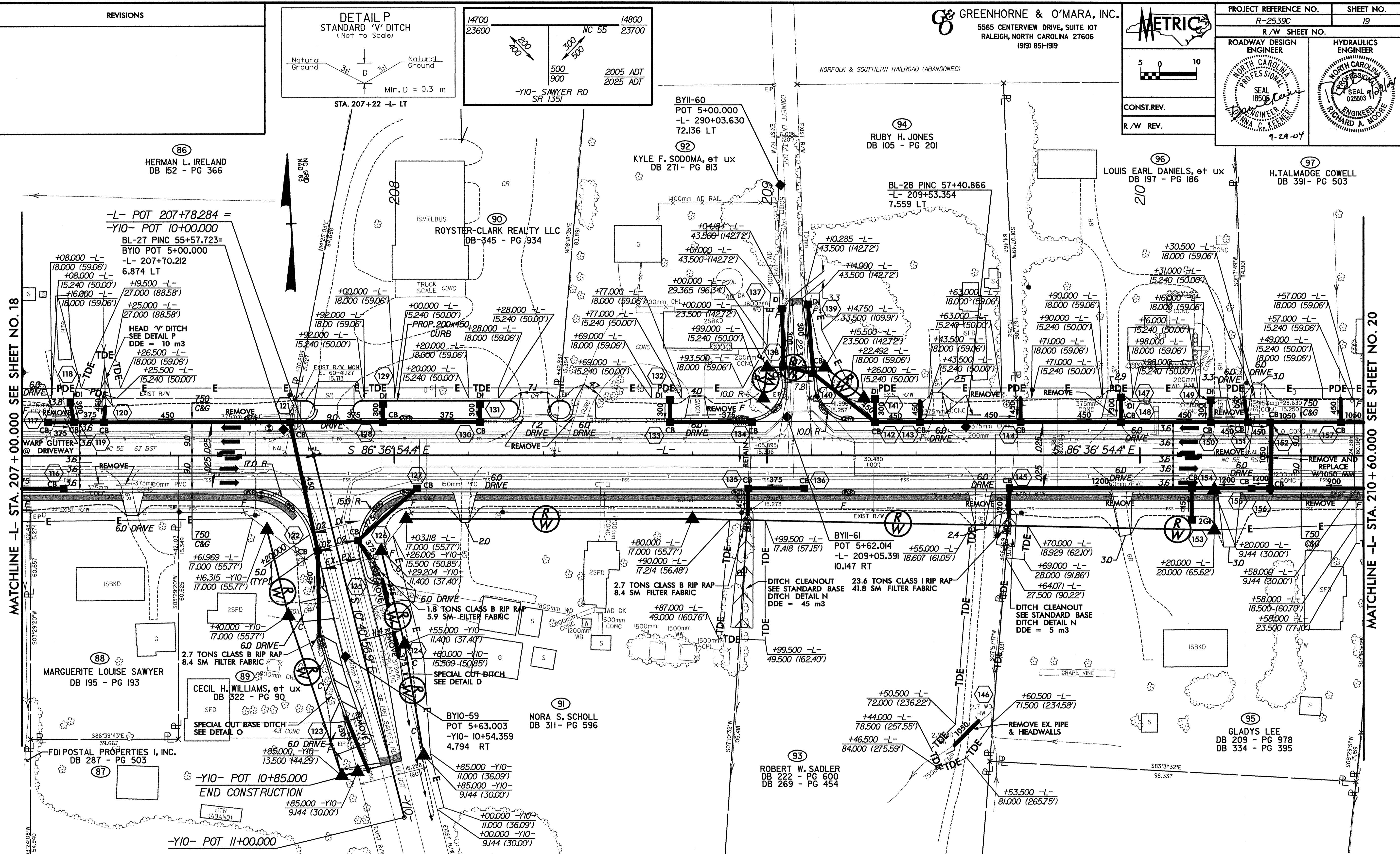
GREENHORNE & O'MARA, INC.
5565 CENTERVIEW DRIVE, SUITE 107
RALEIGH, NORTH CAROLINA 27606
(919) 851-1919

METRIC
5 0 10
CONST. REV.
R/W REV.

PROJECT REFERENCE NO. R-2539C
SHEET NO. 19
R/W SHEET NO.
ROADWAY DESIGN ENGINEER
HYDRAULICS ENGINEER
NORTH CAROLINA PROFESSIONAL SEAL
9-29-09

MATCHLINE -L- STA. 207+00.000 SEE SHEET NO. 18

MATCHLINE -L- STA. 210+60.000 SEE SHEET NO. 20



- NOTES:
1. DRIVES IN SHOULDER SECTION, RADIUS = 1.5m @ E.O.P. (UNLESS OTHERWISE NOTED ON PLANS).
 2. ALL DRIVES IN CURB AND GUTTER SECTIONS ARE RADIUS TYPE DRIVEWAYS WITH A 0.9m RADIUS @ FACE OF CURB (UNLESS OTHERWISE NOTED ON PLANS).
 3. CHANNELIZATION RADIUS = 3.095m @ E.O.P. (UNLESS OTHERWISE NOTED ON PLANS).
 4. OFFSET FROM RW TO 200x450 CURB = 0.0m (TYP.)

SEE SHEET NO. 36 FOR -L- PROFILE
SEE SHEET NO. 43 FOR -Y10- PROFILE
SEE SHEET NO. 2-J FOR -Y10 INTERSECTION DETAIL.