

REVISIONS

GREENHORNE & O'MARA, INC.
5565 CENTERVIEW DRIVE, SUITE 107
RALEIGH, NORTH CAROLINA 27606
(919) 851-1919

METRIC

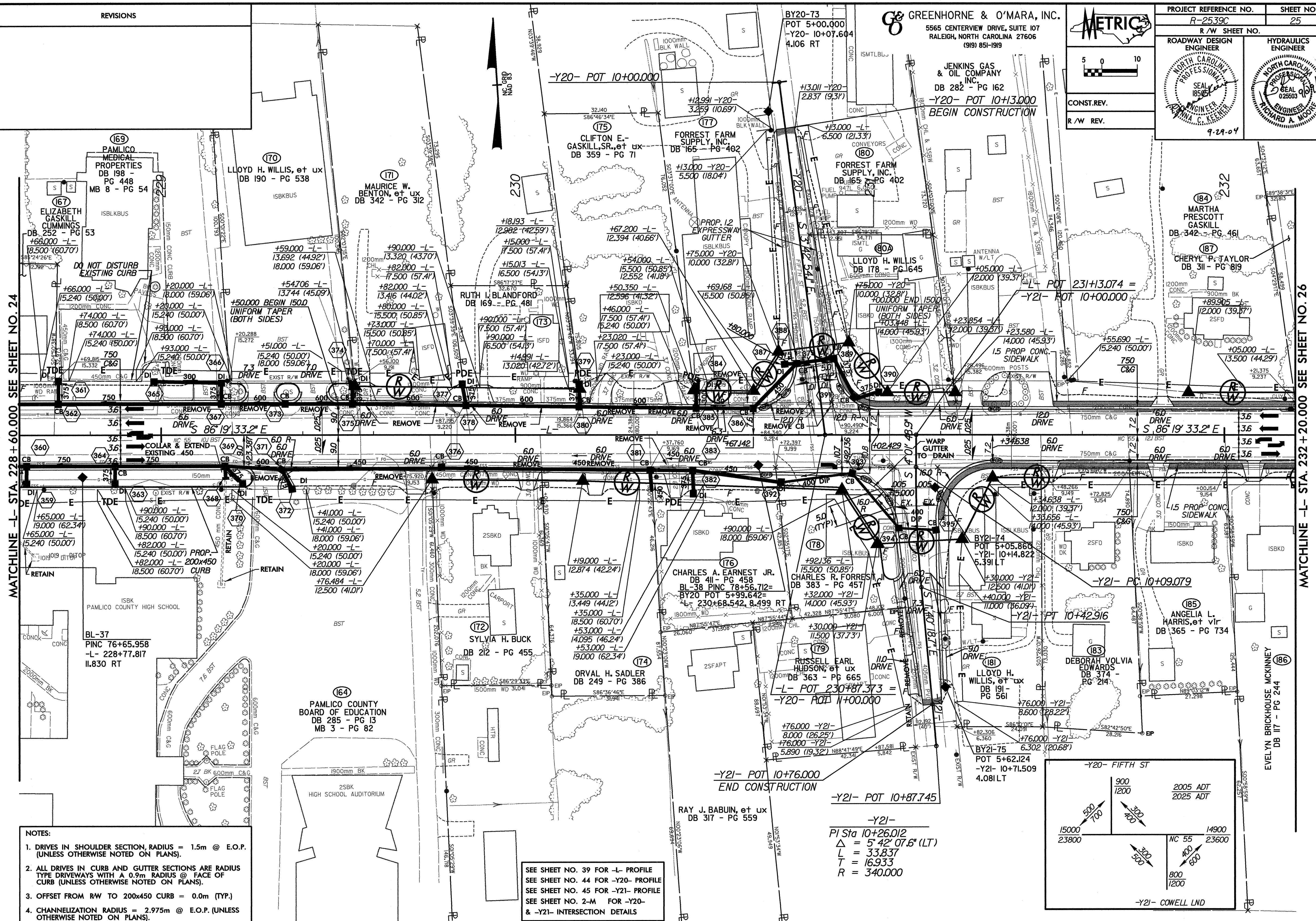
5 0 10

CONST. REV.
R/W REV.

PROJECT REFERENCE NO. R-2539C	SHEET NO. 25
R/W SHEET NO.	
ROADWAY DESIGN ENGINEER NORTH CAROLINA PROFESSIONAL SEAL 9-29-04	HYDRAULICS ENGINEER NORTH CAROLINA PROFESSIONAL SEAL 9-29-04

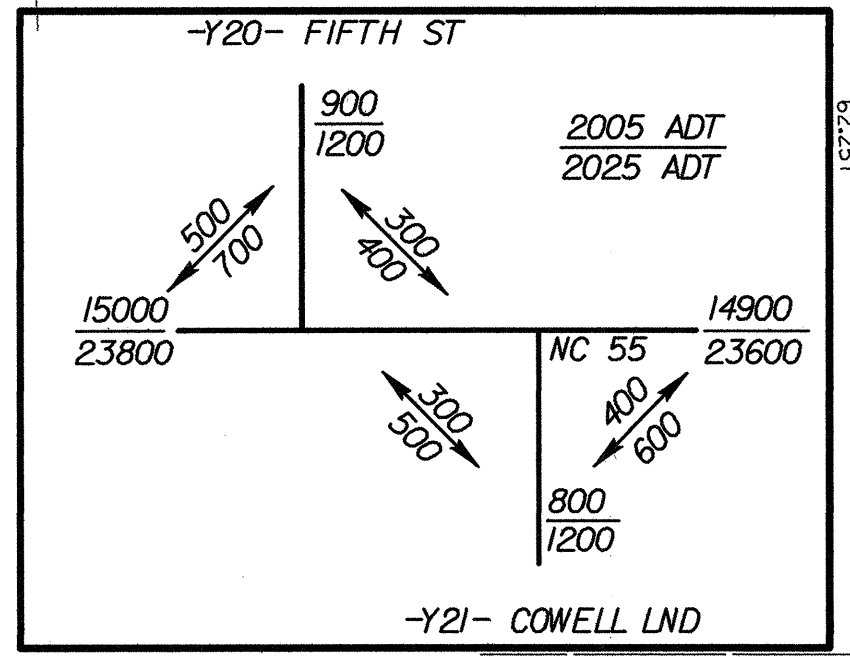
MATCHLINE -L- STA. 228+60.000 SEE SHEET NO. 24

MATCHLINE -L- STA. 232+20.000 SEE SHEET NO. 26



- NOTES:
1. DRIVES IN SHOULDER SECTION, RADIUS = 1.5m @ E.O.P. (UNLESS OTHERWISE NOTED ON PLANS).
 2. ALL DRIVES IN CURB AND GUTTER SECTIONS ARE RADIUS TYPE DRIVEWAYS WITH A 0.9m RADIUS @ FACE OF CURB (UNLESS OTHERWISE NOTED ON PLANS).
 3. OFFSET FROM RW TO 200x450 CURB = 0.0m (TYP.)
 4. CHANNELIZATION RADIUS = 2.975m @ E.O.P. (UNLESS OTHERWISE NOTED ON PLANS).

SEE SHEET NO. 39 FOR -L- PROFILE
SEE SHEET NO. 44 FOR -Y20- PROFILE
SEE SHEET NO. 45 FOR -Y21- PROFILE
SEE SHEET NO. 2-M FOR -Y20- & -Y21- INTERSECTION DETAILS



-Y21-
PI Sta 10+26.012
Δ = 5° 42' 07.6" (LT)
L = 33.837
T = 16.933
R = 340.000

RAY J. BABUIN, et ux
DB 317 - PG 559

-Y21- POT 10+76.000
END CONSTRUCTION

-Y21- POT 10+87.745