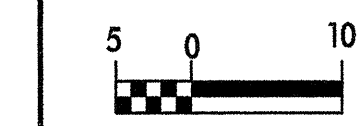


REVISIONS

WYER, et ux
42 - PG 171
- SLIDE 112-7

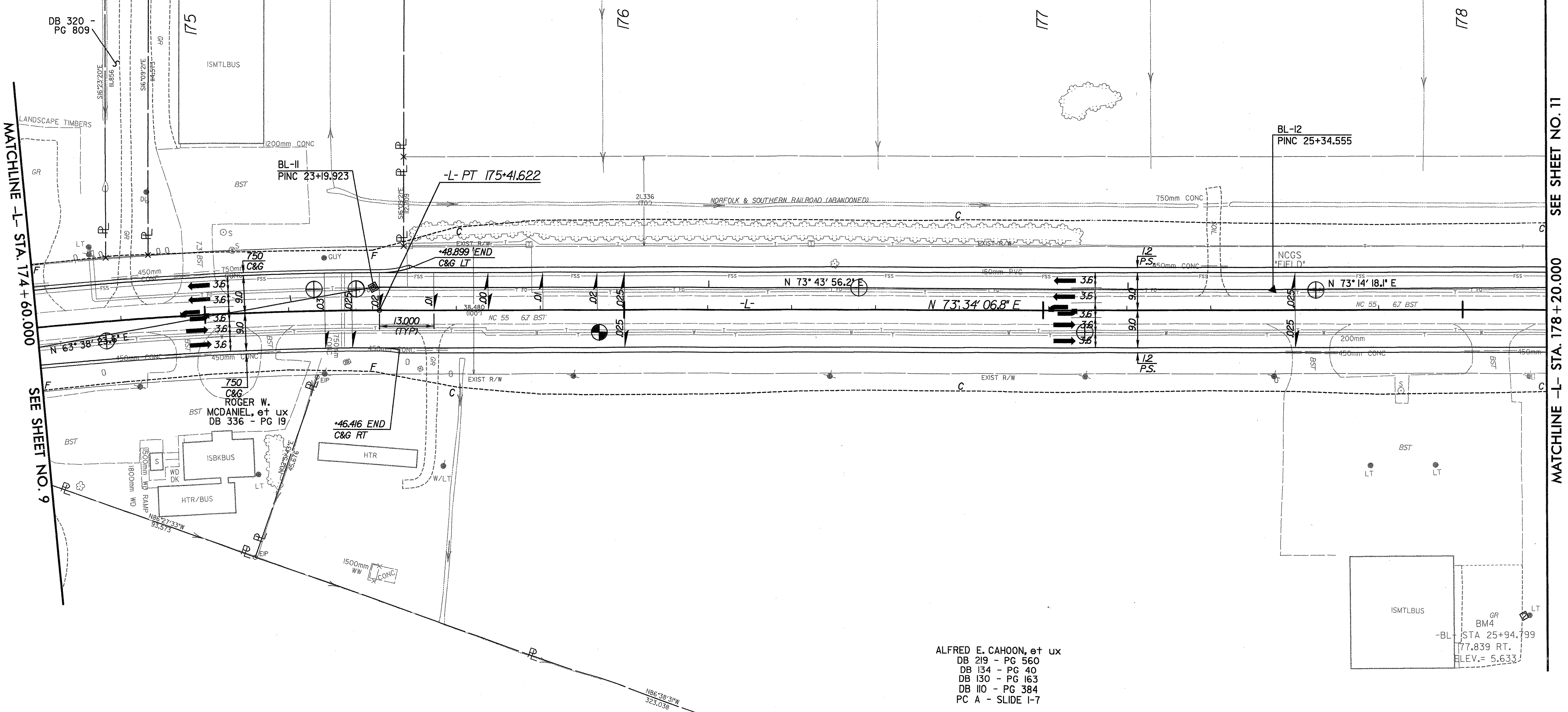
GREENHORNE & O'MARA, INC.
5565 CENTERVUE DRIVE, SUITE 107
RALEIGH, NORTH CAROLINA 27606
(919) 851-1919

PROJECT REFERENCE NO. <i>R-2539C</i>		SHEET NO. <i>10</i>	
R/W SHEET NO.			
ROADWAY DESIGN ENGINEER		HYDRAULICS ENGINEER	
PRELIMINARY PLANS DO NOT USE FOR CONSTRUCTION INCOMPLETE PLANS DO NOT USE FOR R/W ACQUISITION			
CONST. REV.			
R/W REV.			



HERMAN L. IRELAND, et ux
DB 138 - PG 297
DB 152 - PG 262

ROLAND J. WARD, JR., et ux
DB 359 - PG 646



MATCHLINE -L- STA. 174+60.000
SEE SHEET NO. 9

MATCHLINE -L- STA. 178+20.000
SEE SHEET NO. 11

LISTER DANIEL RICE, et ux
DB 269 - PG 443
DB 224 - PG 832
PC A - SLIDE 8-10

-L-
PI Sta 174+62.032
 $\Delta = 10' 16' 30.8'' (RT)$
L = 159.609
T = 80.019
R = 890.000
S.E. = .03
R'OFF = 39.0

ALFRED E. CAHOON, et ux
DB 219 - PG 560
DB 134 - PG 40
DB 130 - PG 163
DB 110 - PG 384
PC A - SLIDE 1-7

SEE SHEET NO. 28 FOR -L- PROFILE

*****SYSTEMTIME*****