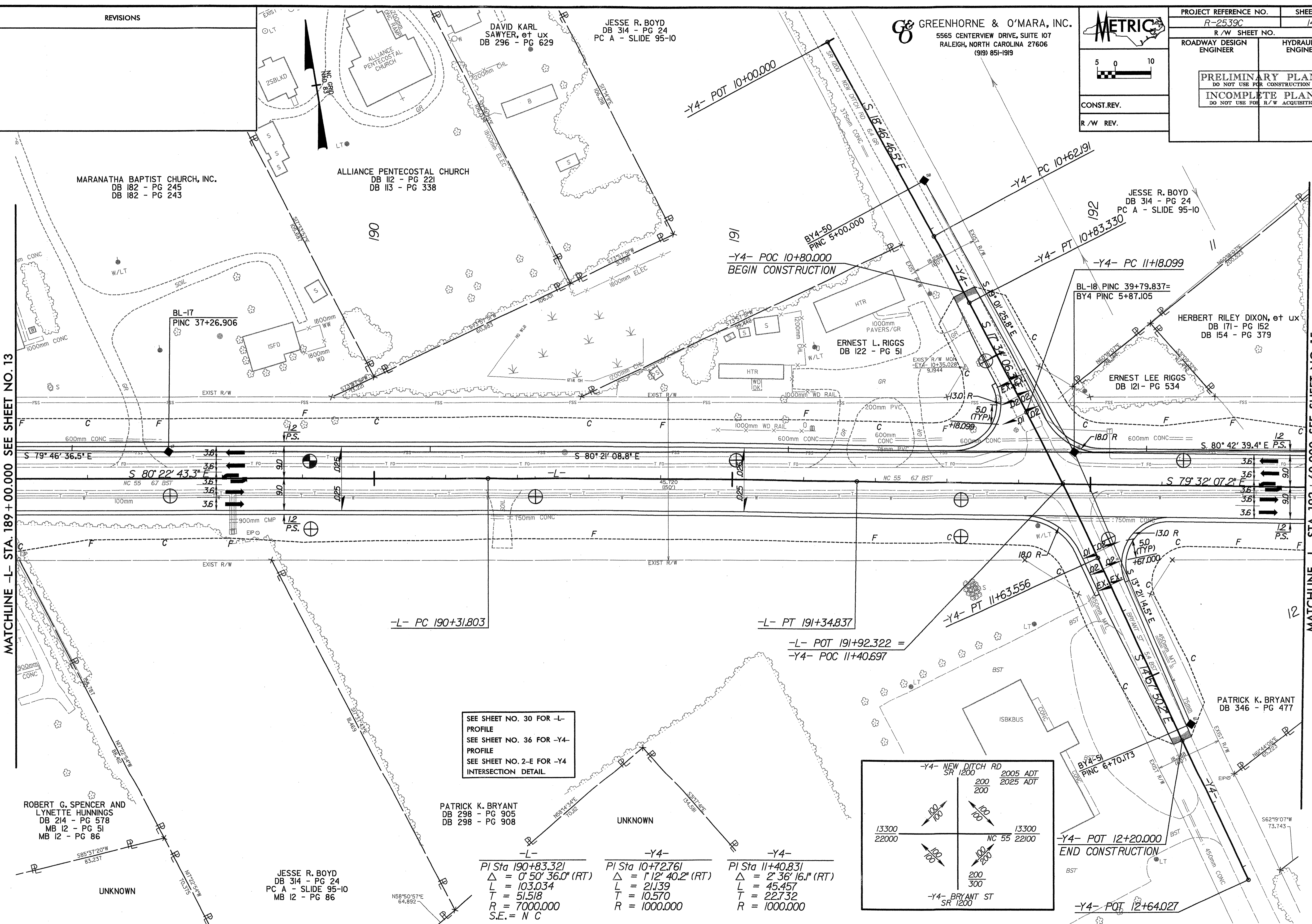
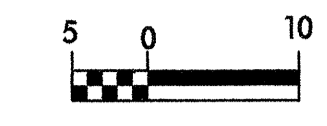


REVISIONS

**GREENHORNE & O'MARA, INC.**  
 5565 CENTERVIEW DRIVE, SUITE 107  
 RALEIGH, NORTH CAROLINA 27606  
 (919) 851-1919



PROJECT REFERENCE NO. R-2539C	SHEET NO. 14
R/W SHEET NO.	
ROADWAY DESIGN ENGINEER	HYDRAULICS ENGINEER
<b>PRELIMINARY PLANS</b> DO NOT USE FOR CONSTRUCTION <b>INCOMPLETE PLANS</b> DO NOT USE FOR R/W ACQUISITION	
CONST. REV.	
R/W REV.	

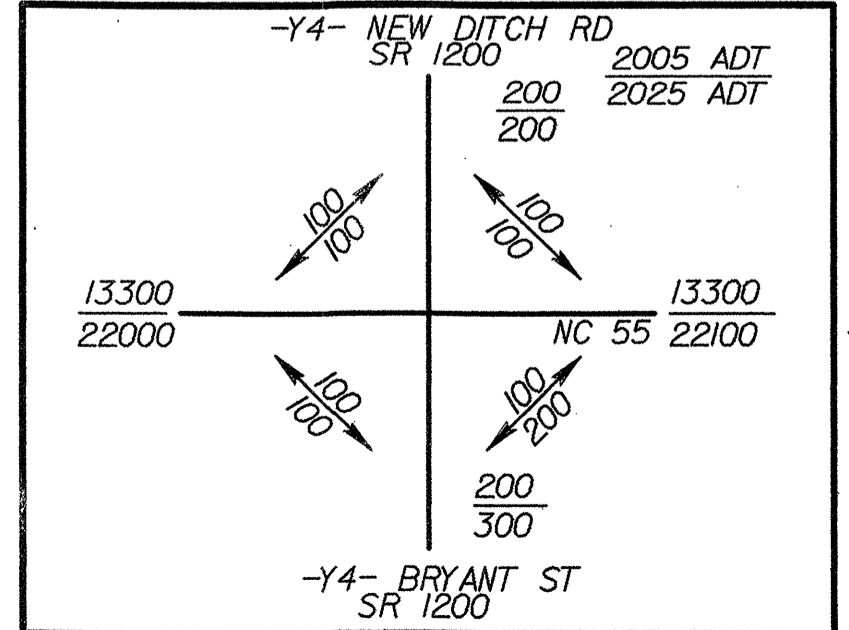


MATCHLINE -L- STA. 189 + 00.000 SEE SHEET NO. 13

MATCHLINE -L- STA. 192 + 60.000 SEE SHEET NO. 15

SEE SHEET NO. 30 FOR -L- PROFILE  
 SEE SHEET NO. 36 FOR -Y4- PROFILE  
 SEE SHEET NO. 2-E FOR -Y4 INTERSECTION DETAIL.

-L-	-Y4-	-Y4-
PI Sta 190+83.321	PI Sta 10+72.761	PI Sta 11+40.831
$\Delta = 0^\circ 50' 36.0''$ (RT)	$\Delta = 1^\circ 12' 40.2''$ (RT)	$\Delta = 2^\circ 36' 16.1''$ (RT)
L = 103.034	L = 21.139	L = 45.457
T = 51.518	T = 10.570	T = 22.732
R = 7000.000	R = 1000.000	R = 1000.000
S.E. = N C		



ROBERT G. SPENCER AND  
 LYNETTE HUNNINGS  
 DB 214 - PG 578  
 MB 12 - PG 51  
 MB 12 - PG 86

JESSE R. BOYD  
 DB 314 - PG 24  
 PC A - SLIDE 95-10  
 MB 12 - PG 86

PATRICK K. BRYANT  
 DB 298 - PG 905  
 DB 298 - PG 908

PATRICK K. BRYANT  
 DB 346 - PG 477

JESSE R. BOYD  
 DB 314 - PG 24  
 PC A - SLIDE 95-10

HERBERT RILEY DIXON, et ux  
 DB 171 - PG 152  
 DB 154 - PG 379

ERNEST LEE RIGGS  
 DB 121 - PG 534

ERNEST L. RIGGS  
 DB 122 - PG 51

ALLIANCE PENTECOSTAL CHURCH  
 DB 112 - PG 221  
 DB 113 - PG 338

MARANATHA BAPTIST CHURCH, INC.  
 DB 182 - PG 245  
 DB 182 - PG 243

DAVID KARL SAWYER, et ux  
 DB 296 - PG 629

JESSE R. BOYD  
 DB 314 - PG 24  
 PC A - SLIDE 95-10

UNKNOWN

UNKNOWN

UNKNOWN