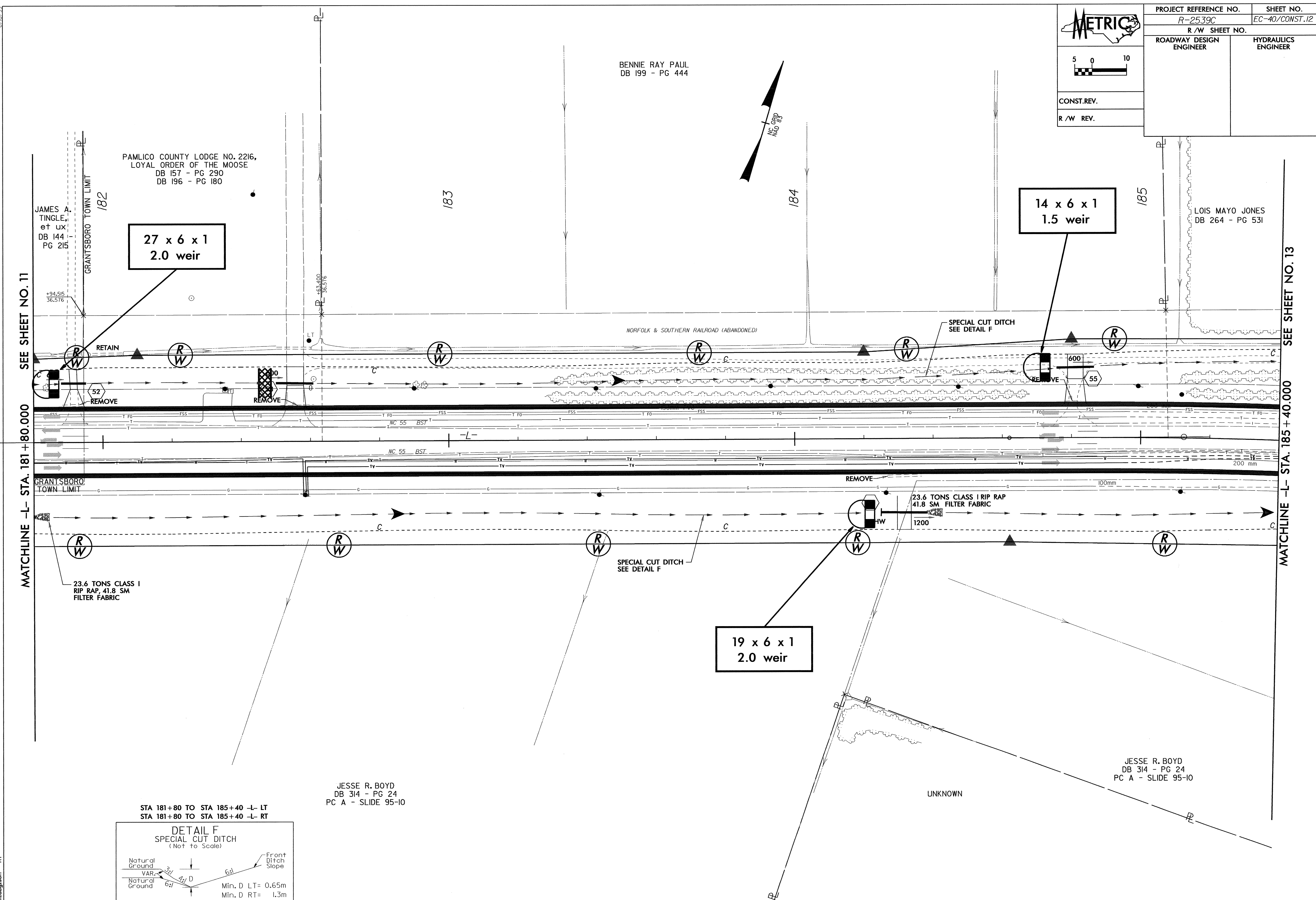
 5 0 10 CONST.REV. R/W REV.	PROJECT REFERENCE NO.	SHEET NO.
	R-2539C	EC-40/CONST.12
ROADWAY DESIGN ENGINEER		HYDRAULICS ENGINEER



6/10/23

04-NV-2024-03520
m:\projects\2539C\12.PSH

MATCHLINE -L- STA. 181 + 80.000 SEE SHEET NO. 11

MATCHLINE -L- STA. 185 + 40.000 SEE SHEET NO. 13

PAMLICO COUNTY LODGE NO. 2216,
LOYAL ORDER OF THE MOOSE
DB 157 - PG 290
DB 196 - PG 180

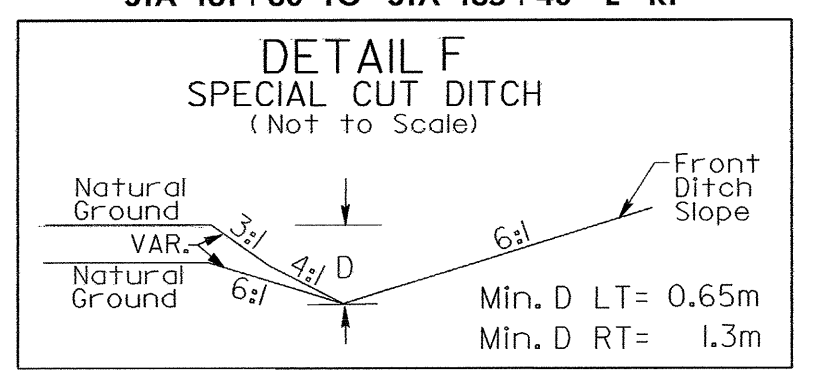
JAMES A. TINGLE,
et ux
DB 144 - PG 215

BENNIE RAY PAUL
DB 199 - PG 444

LOIS MAYO JONES
DB 264 - PG 531

JESSE R. BOYD
DB 314 - PG 24
PC A - SLIDE 95-10

STA 181+80 TO STA 185+40 -L- LT
STA 181+80 TO STA 185+40 -L- RT



UNKNOWN