

UTILITY CONSTRUCTION

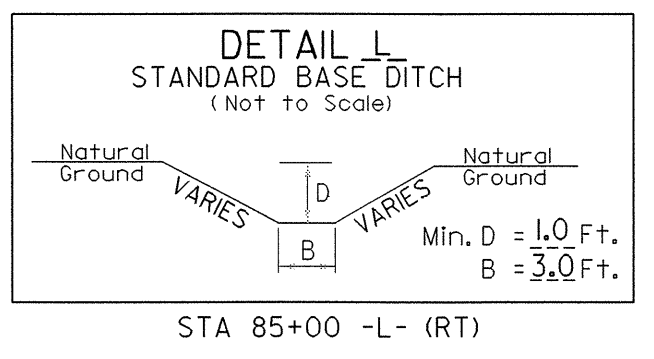
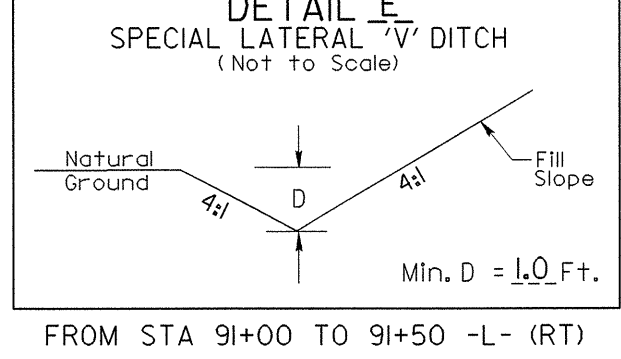
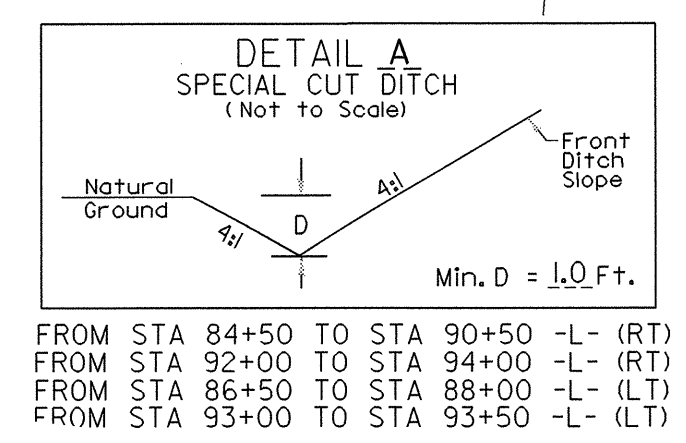
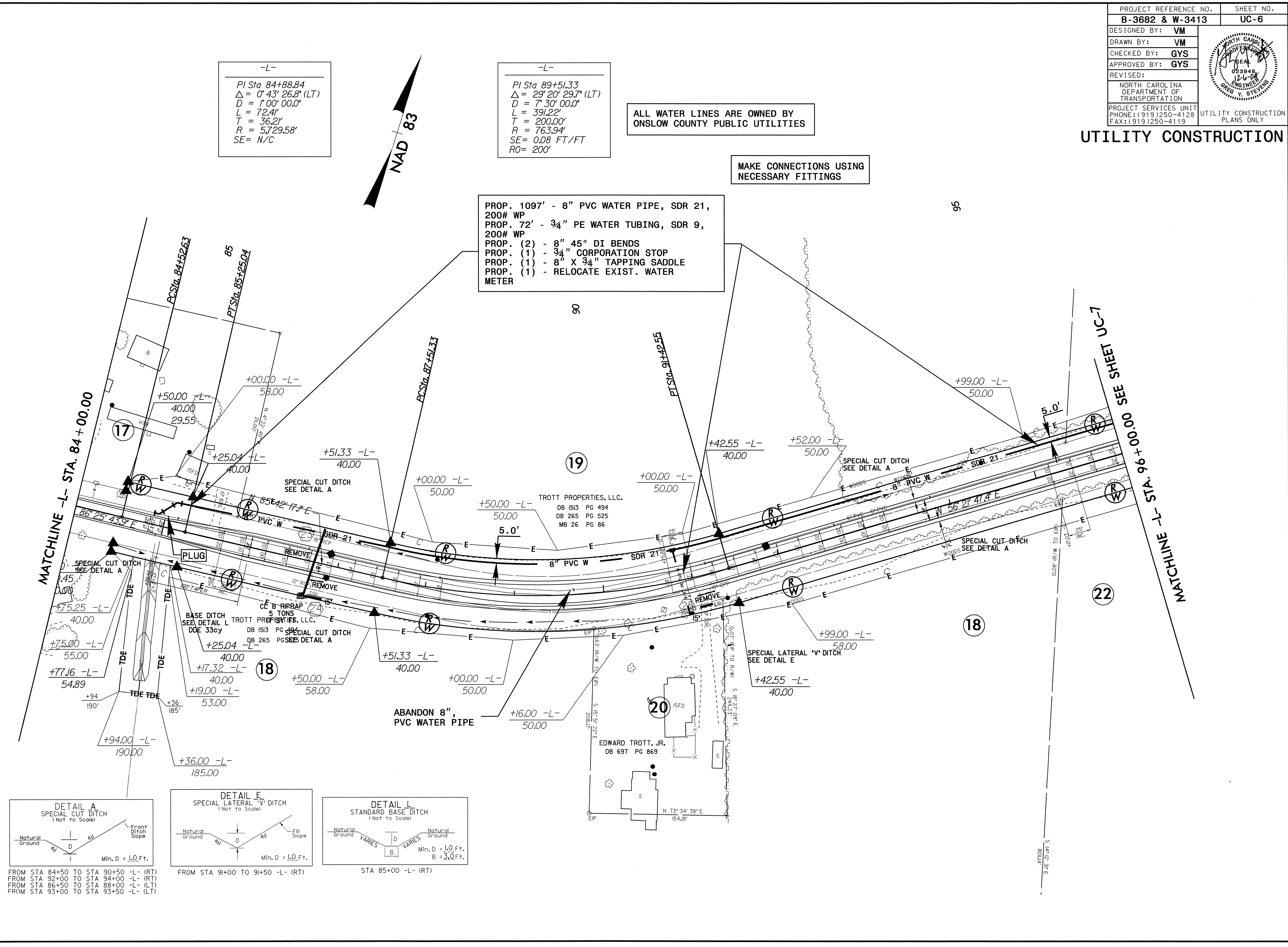
-L-
 PI Sta 84+88.84
 $\Delta = 0^\circ 43' 26.8" (LT)$
 $D = 7' 00' 00.0"$
 $L = 72.41'$
 $T = 36.21'$
 $R = 5,729.58'$
 SE= N/C

-L-
 PI Sta 89+51.33
 $\Delta = 29^\circ 20' 29.7" (LT)$
 $D = 7' 30' 00.0"$
 $L = 391.22'$
 $T = 200.00'$
 $R = 763.94'$
 $SE = 0.08 FT/FT$
 $RO = 200'$

ALL WATER LINES ARE OWNED BY
 ONSLOW COUNTY PUBLIC UTILITIES

MAKE CONNECTIONS USING
 NECESSARY FITTINGS

PROP. 1097' - 8" PVC WATER PIPE, SDR 21,
 200# WP
 PROP. 72' - 3/4" PE WATER TUBING, SDR 9,
 200# WP
 PROP. (2) - 8" 45° DI BENDS
 PROP. (1) - 3/4" CORPORATION STOP
 PROP. (1) - 8" X 3/4" TAPPING SADDLE
 PROP. (1) - RELOCATE EXIST. WATER
 METER



8/17/99
 06-DEC-2004 09:00
 RA:UC:\projects\B3682\UC\B3682.ut.LC.Rdw\08_UC06.psh
 1/21/05