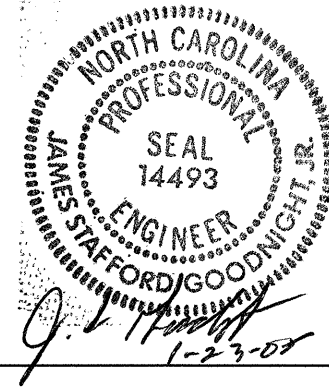
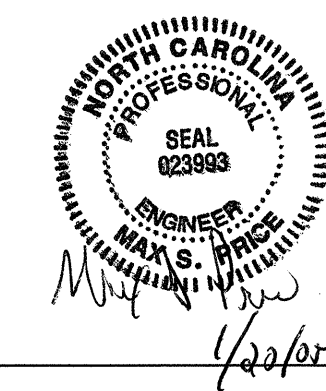
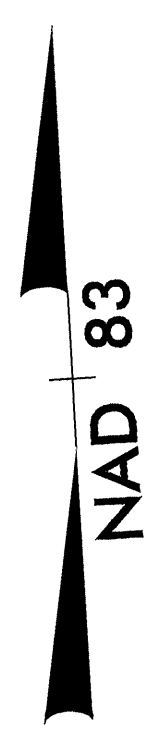


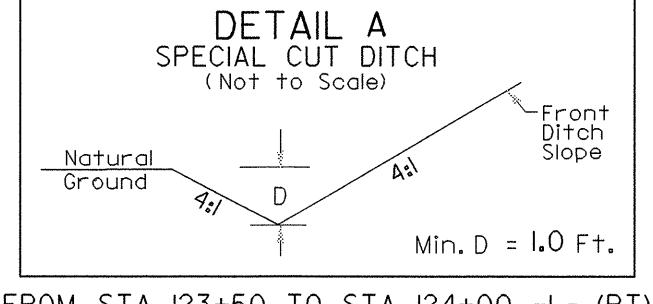
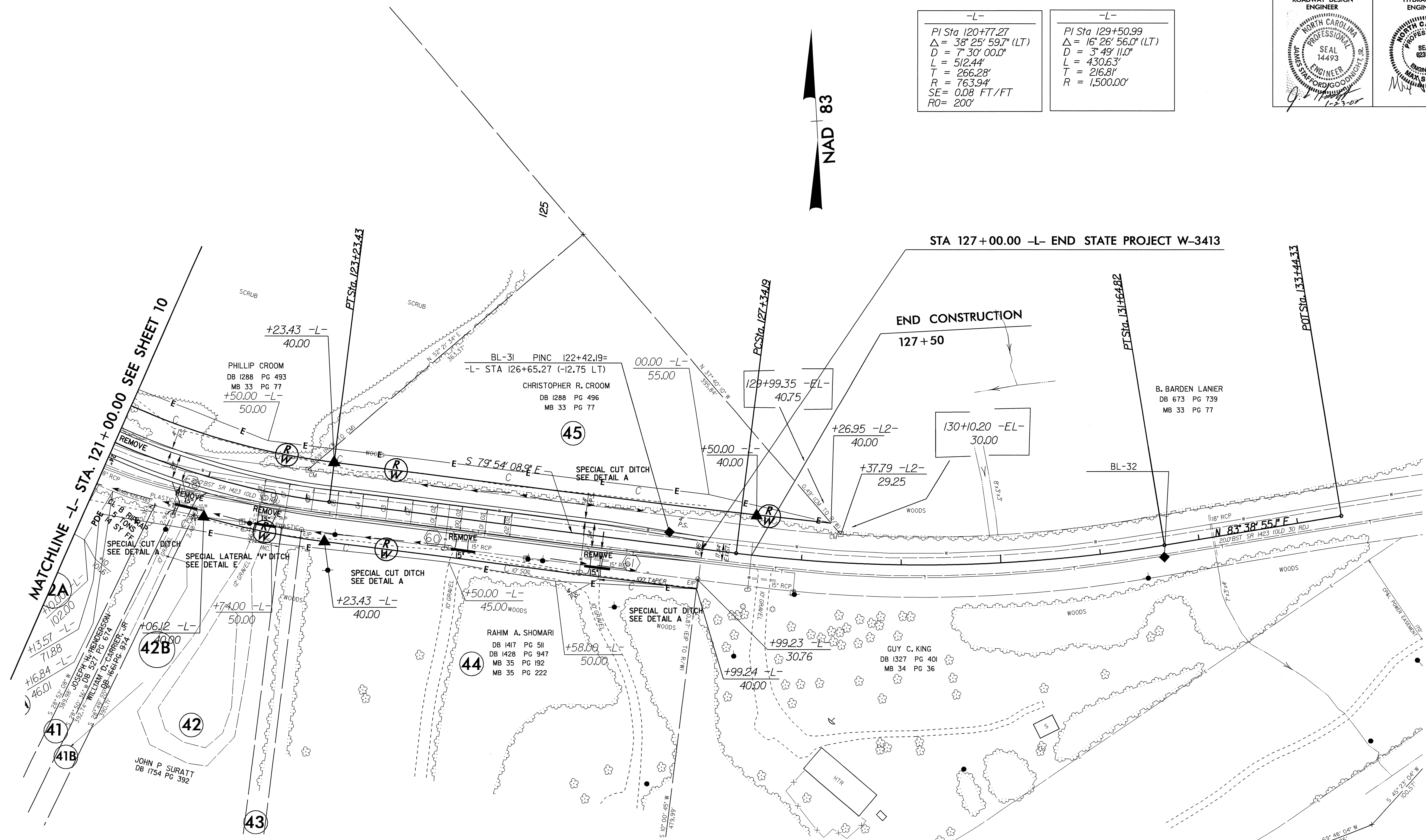
8/17/99

ROADWAY DESIGN ENGINEER 	HYDRAULICS ENGINEER 
---	---

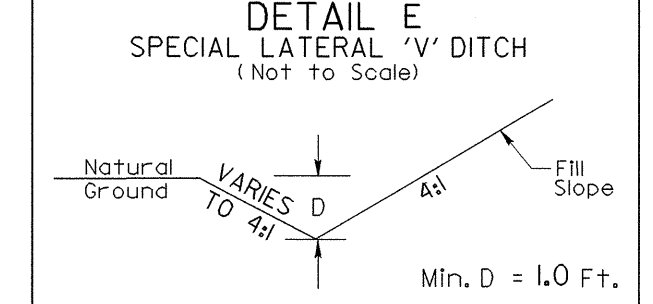
-L- PI Sta 120+77.27 $\Delta = 38^{\circ} 25' 59.7''$ (LT) $D = 7^{\circ} 30' 00.0''$ $L = 512.44'$ $T = 266.28'$ $R = 763.94'$ $SE = 0.08$ FT/FT $RO = 200'$	-L- PI Sta 129+50.99 $\Delta = 16^{\circ} 26' 56.0''$ (LT) $D = 3^{\circ} 49' 11.0''$ $L = 430.63'$ $T = 216.81'$ $R = 1,500.00'$
---	---



REVISIONS



FROM STA 123+50 TO STA 124+00 -L- (RT)
 FROM STA 121+00 TO STA 121+50 -L- (RT)
 FROM STA 125+50 TO STA 127+00 -L- (RT)
 FROM STA 124+00 TO STA 127+00 -L- (LT)



FROM STA 122+00 TO STA 123+00 -L- (RT)

See Sheet 15, 16 for -L- Profile

19 JAN 2005 13:36
 RD203674
 RD203674