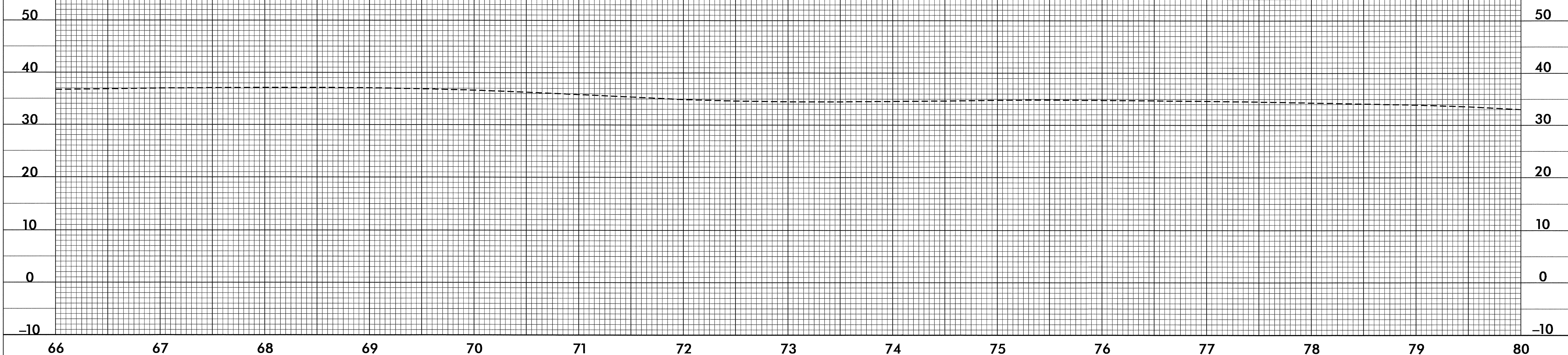
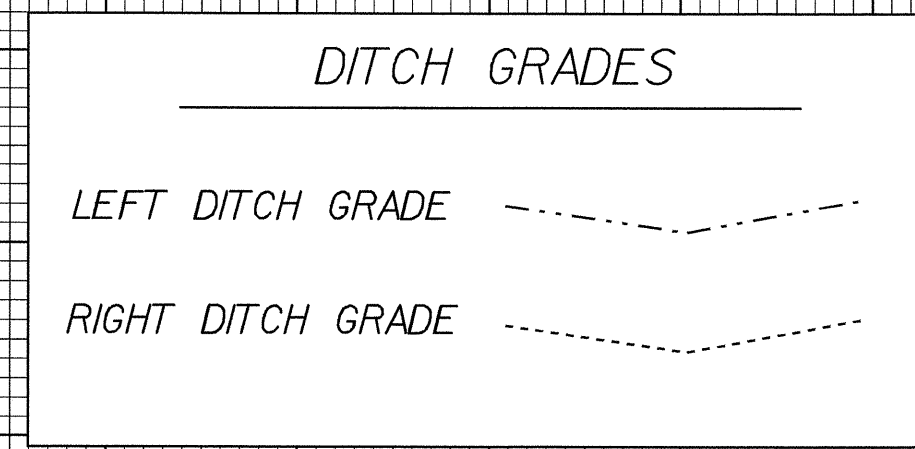


5/28/99

PROJECT REFERENCE NO. B-3682 & W-3413		SHEET NO. 14
ROADWAY DESIGN ENGINEER		HYDRAULICS ENGINEER

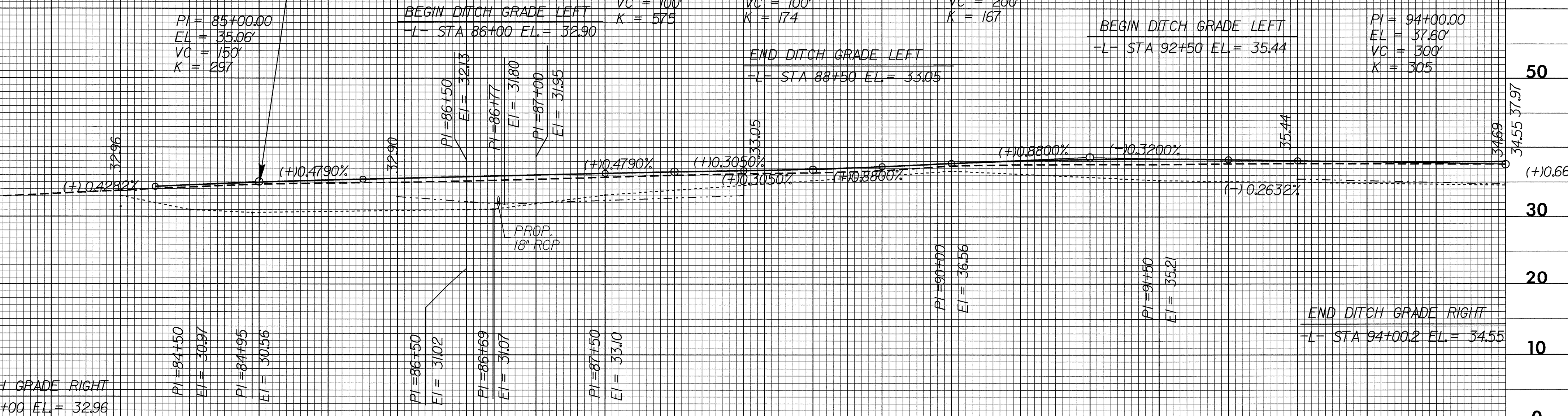


PIPE HYDRAULIC DATA
DRAINAGE STRUCTURE NO.23

DRAINAGE AREA	= 3.8	AC
DESIGN FREQUENCY	= 25	YRS
DESIGN DISCHARGE	= 5.4	CFS
DESIGN HW ELEVATION	= 33.1	FT
100 YEAR DISCHARGE	= 8.6	CFS
100 YEAR HW ELEVATION	= 33.9	FT
OVERTOPPING FREQUENCY	= 200+	YRS
OVERTOPPING DISCHARGE	= 14.0	CFS
OVERTOPPING ELEVATION	= 35.5	FT

BEGIN GRADE
-L- STA 85+00.00
EL = 34.96
INCLUDES 2" RESURFACING

BM *5 RAILROAD SPIKE IN 24" OAK
RT.OF -L- STA.87+00 ELEV.36.75'
N=375,935.9980 E=2,514,812.5079



See Sheet 8 for Plan View

14-JAN-2005 09:00
R:\pro\3682\p1
FATuck