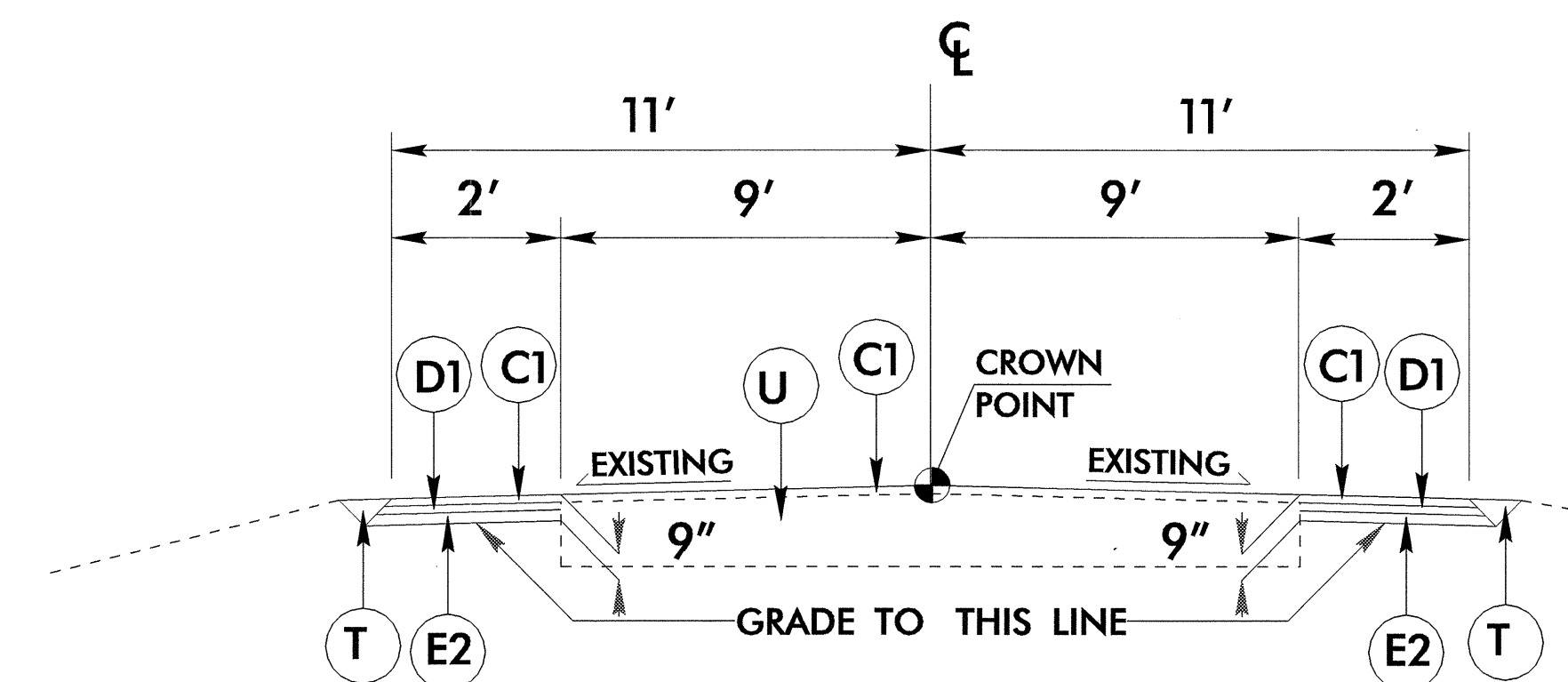


6/2/99

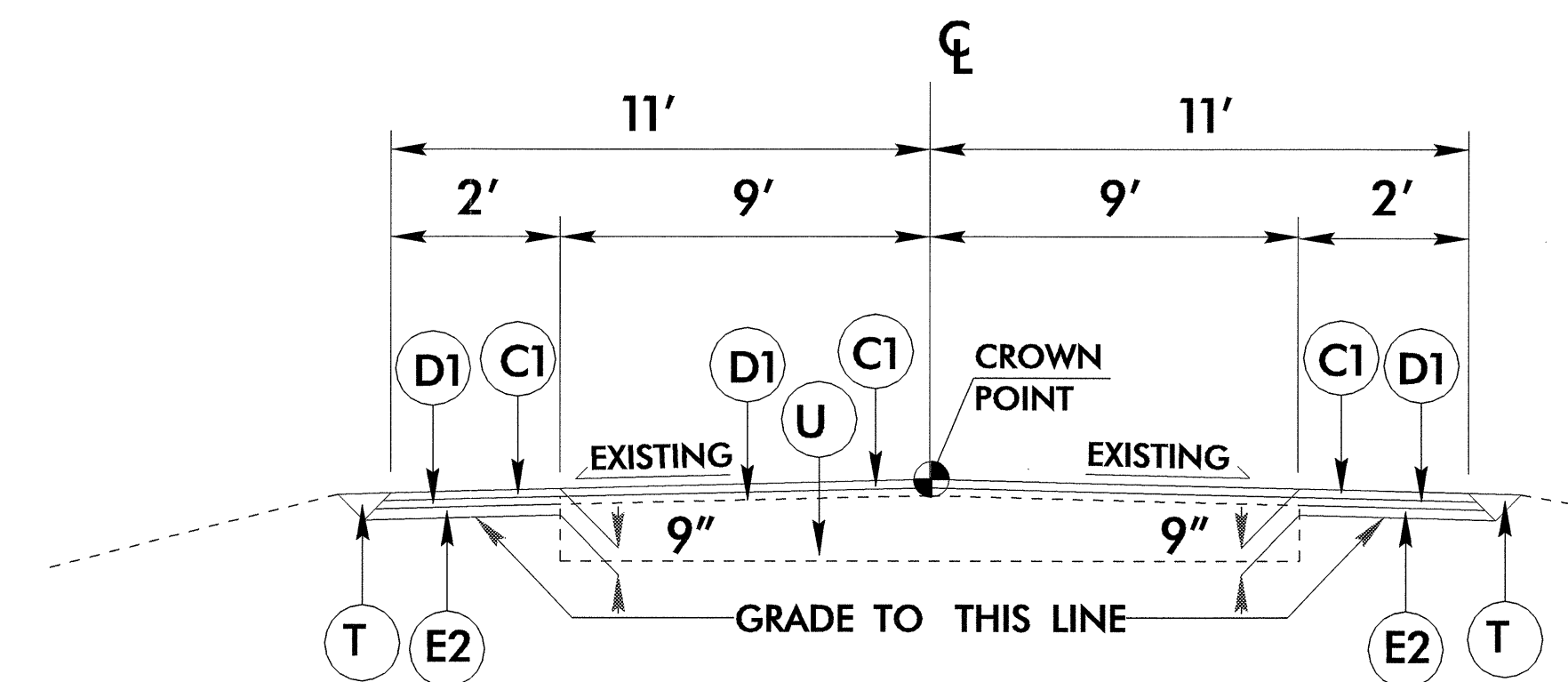
PAVEMENT SCHEDULE	
C1	PROP. APPROX. 1.5" ASPHALT CONCRETE SURFACE COURSE, TYPE S9.5B, AT AN AVERAGE RATE OF 168 LBS. PER SQ. YD..
C2	PROP. APPROX. 2.5" ASPHALT CONCRETE SURFACE COURSE, TYPE S9.5B, AT AN AVERAGE RATE OF 140 LBS. PER SQ. YD. IN EACH OF TWO LAYERS.
C3	PROP. VAR. DEPTH ASPHALT CONCRETE SURFACE COURSE, TYPE S9.5B, AT AN AVERAGE RATE OF 112 LBS. PER SQ. YD. PER 1" DEPTH. TO BE PLACED IN LAYERS NOT TO EXCEED 1 1/2" IN DEPTH.
D1	PROP. APPROX. 2.5" ASPHALT CONCRETE INTERMEDIATE COURSE, TYPE I19.0B, AT AN AVERAGE RATE OF 285 LBS. PER SQ. YD..
D2	PROP. VAR. DEPTH ASPHALT CONCRETE INTERMEDIATE COURSE, TYPE I19.0B, AT AN AVERAGE RATE OF 114 LBS. PER SQ. YD. PER 1" DEPTH. TO BE PLACED IN LAYERS NOT LESS THAN 2 1/4" IN DEPTH OR GREATER THAN 4" IN DEPTH.
E1	PROP. APPROX. 3.5" ASPHALT CONCRETE BASE COURSE, TYPE B25.0B, AT AN AVERAGE RATE OF 399 LBS. PER SQ. YD.
E2	PROP. APPROX. 5" ASPHALT CONCRETE BASE COURSE, TYPE B25.0B, AT AN AVERAGE RATE OF 570 LBS. PER SQ. YD.
E3	PROP. VAR. DEPTH ASPHALT CONCRETE BASE COURSE, TYPE B25.0B, AT AN AVERAGE RATE OF 114 LBS. PER SQ. YD. PER 1" DEPTH. TO BE PLACED IN LAYERS NOT LESS THAN 3" IN DEPTH OR GREATER THAN 5 1/2" IN DEPTH.
T	EARTH MATERIAL.
U	EXISTING PAVEMENT.
W	VARIABLE DEPTH ASPHALT PAVEMENT (SEE WEDGING DETAIL)

NOTE: PAVEMENT EDGE SLOPES ARE 1:1 UNLESS SHOWN OTHERWISE.



DETOUR TYPICAL SECTION NO.1

USE DETOUR TYPICAL SECTION NO.1
SR 1434, SR 1435, SR 1701

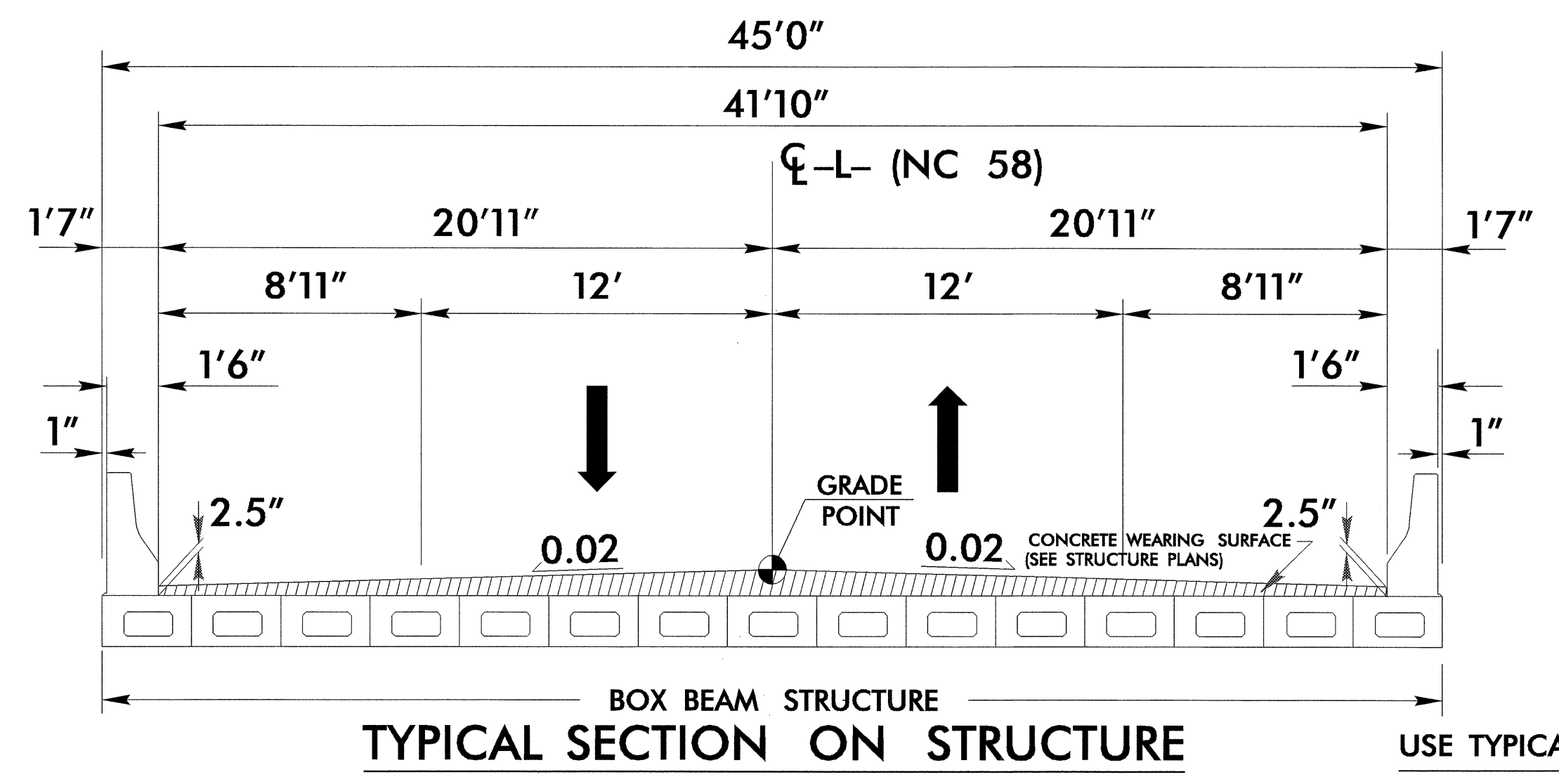


DETOUR TYPICAL SECTION NO.2

ROUTE	LENGTH
SR1434	0.9 M
SR1435	1.2 M
SR1700	1.0 M
SR1701	0.7 M

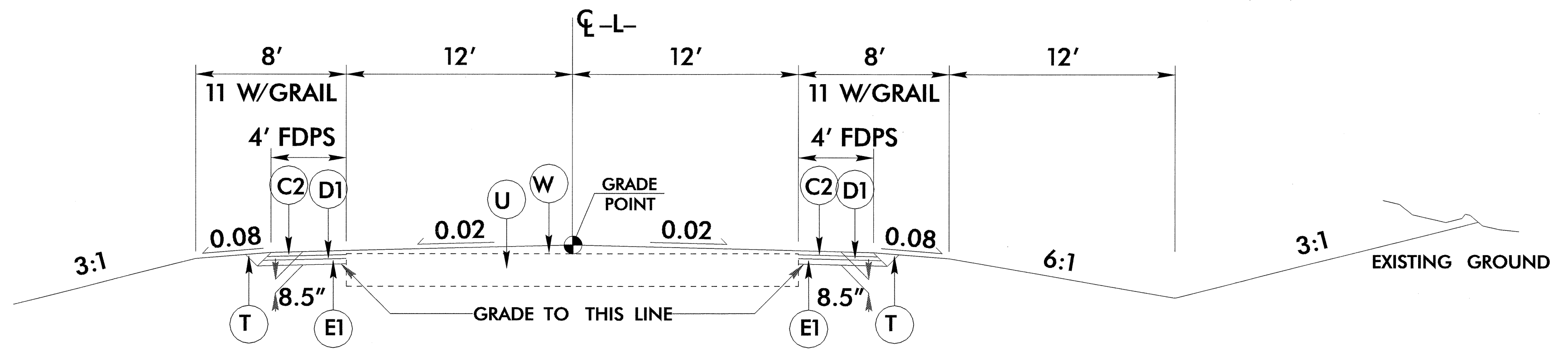
USE DETOUR TYPICAL SECTION NO. 2
SR 1700

PROJECT REFERENCE NO. B-3866	SHEET NO. 2
ROADWAY DESIGN ENGINEER 	PAVEMENT DESIGN ENGINEER



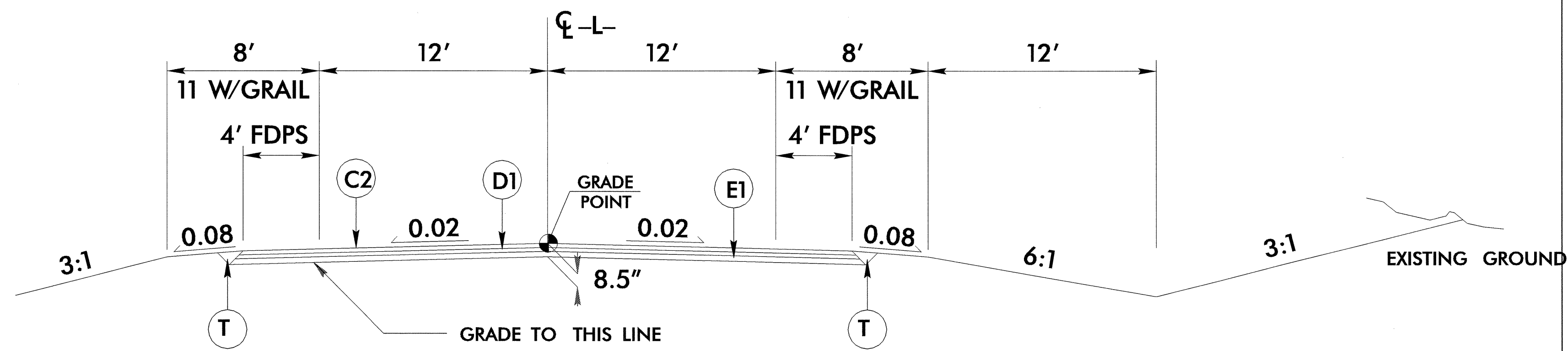
TYPICAL SECTION ON STRUCTURE

USE TYPICAL SECTION ON STRUCTURE
-L- STA. 18+84.00 TO 19+59.00



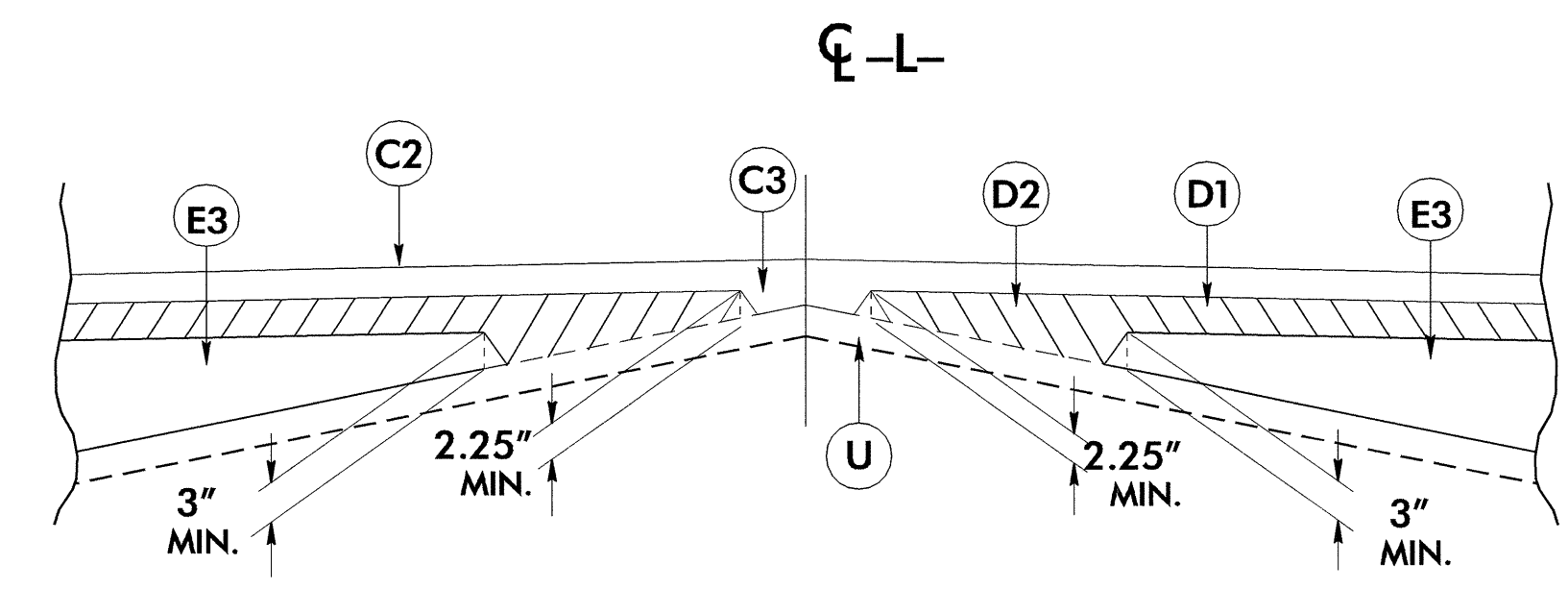
TYPICAL SECTION NO. 1

USE TYPICAL SECTION NO. 1
-L- STA. 13+50.00 TO 14+95.00
-L- STA. 20+30.00 TO 24+00.00



TYPICAL SECTION NO. 2

USE TYPICAL SECTION NO. 2
-L- STA. 14+95.00 TO 18+84.00 (BEGIN BRIDGE)
-L- STA. 19+59.00 (END BRIDGE) TO 20+30.00



Detail Showing Method of Wedging

01-FEB-2005 09:17
r:\roadway\proj\3866_rdy_typ.dgn
MBLetchworth