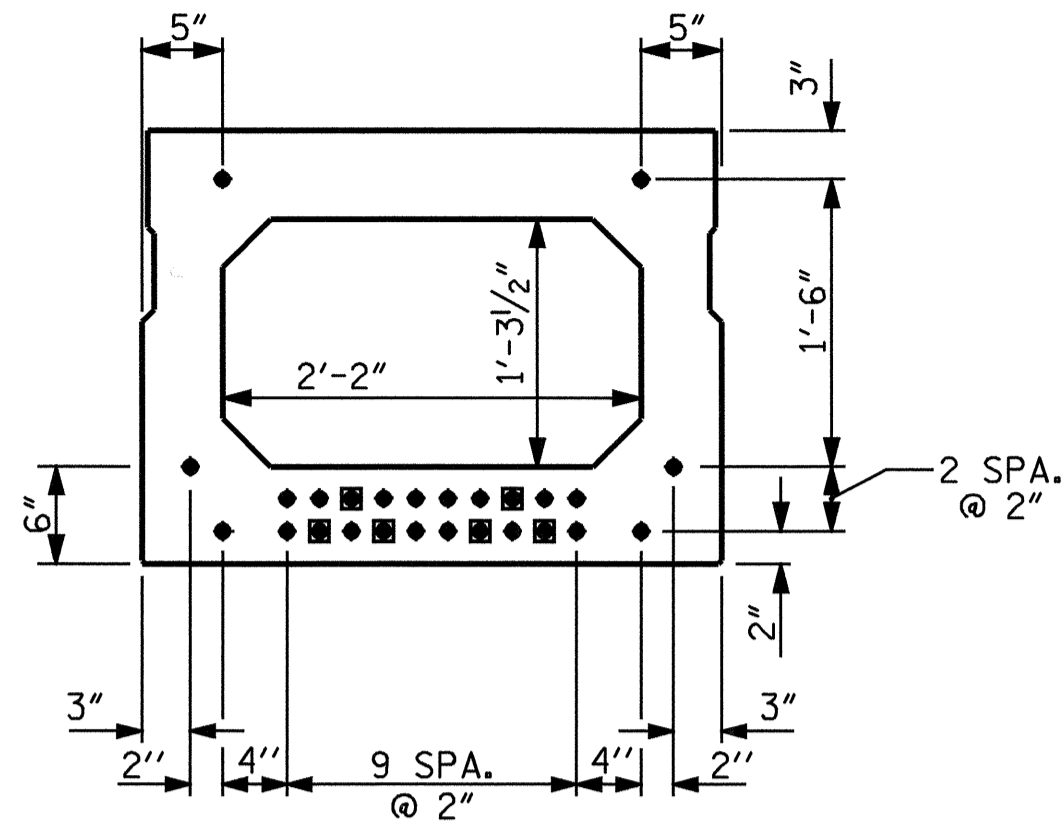
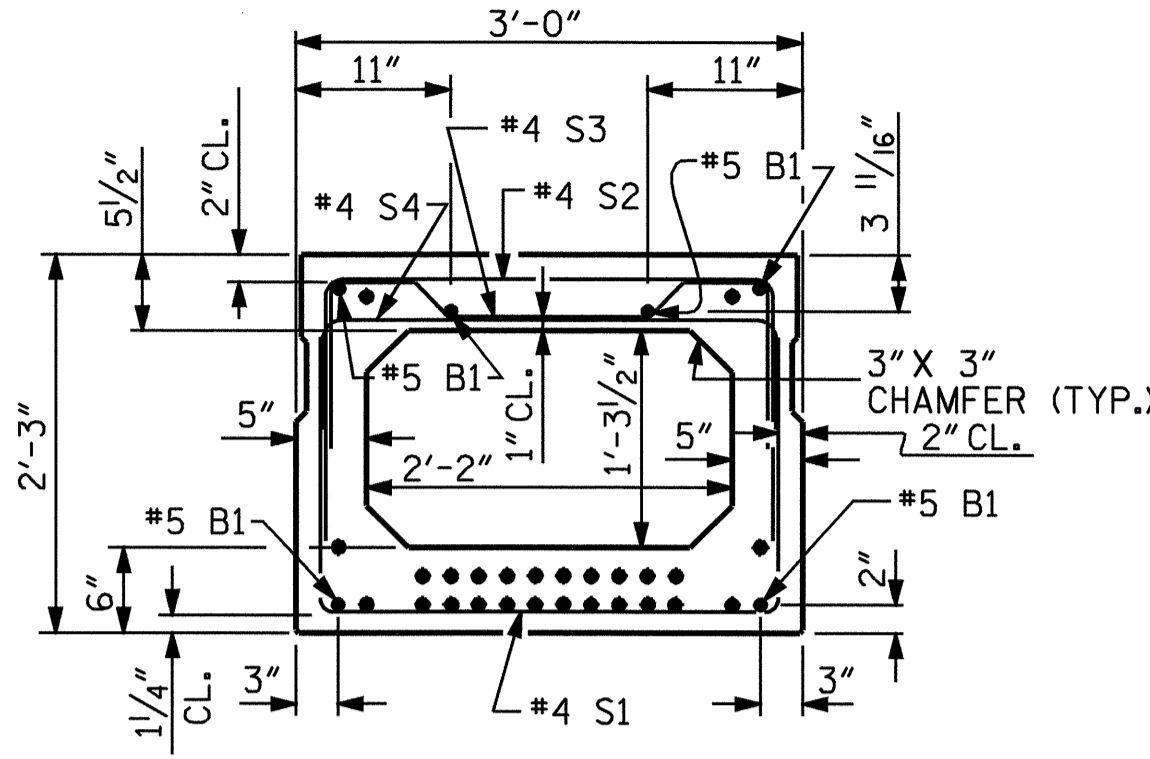


● BOND SHALL BE BROKEN AT THESE STRANDS AT A DISTANCE OF 5'-0" FROM THE END OF THE BOX BEAM. SEE STANDARD SPECIFICATION ARTICLE 1078-7.

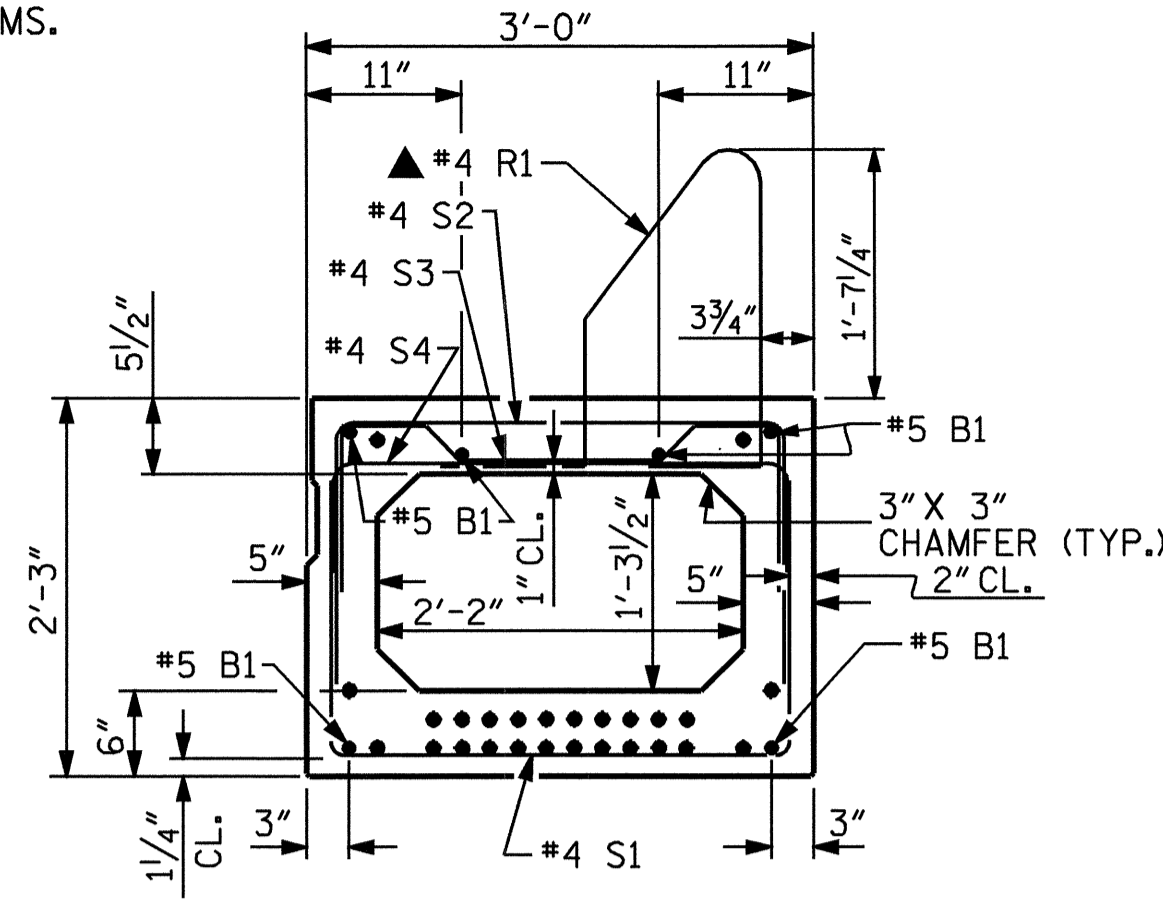
▲ RAKE THE TOP SURFACE OF ALL BOX BEAMS TO A DEPTH OF 3/8" EXCEPT IN THE AREA BETWEEN THE STIRRUP AND THE BEAM EDGE ON EXTERIOR BOX BEAMS.



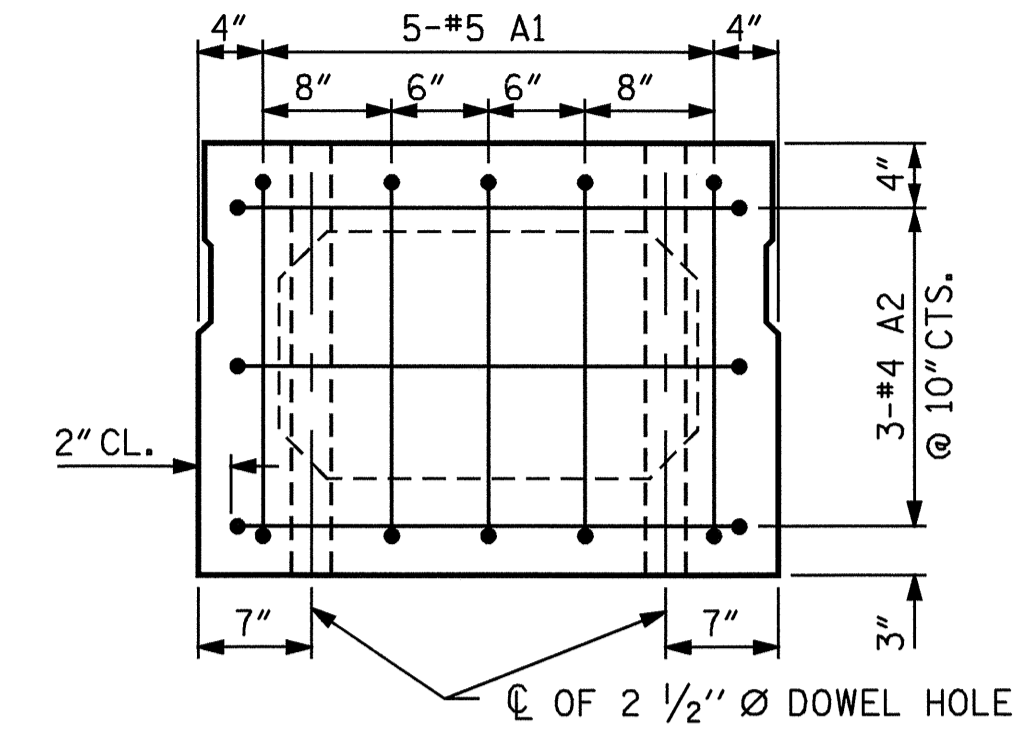
TYPICAL STRAND LOCATION  
(26 STRANDS REQUIRED)



INTERIOR BOX BEAM SECTION

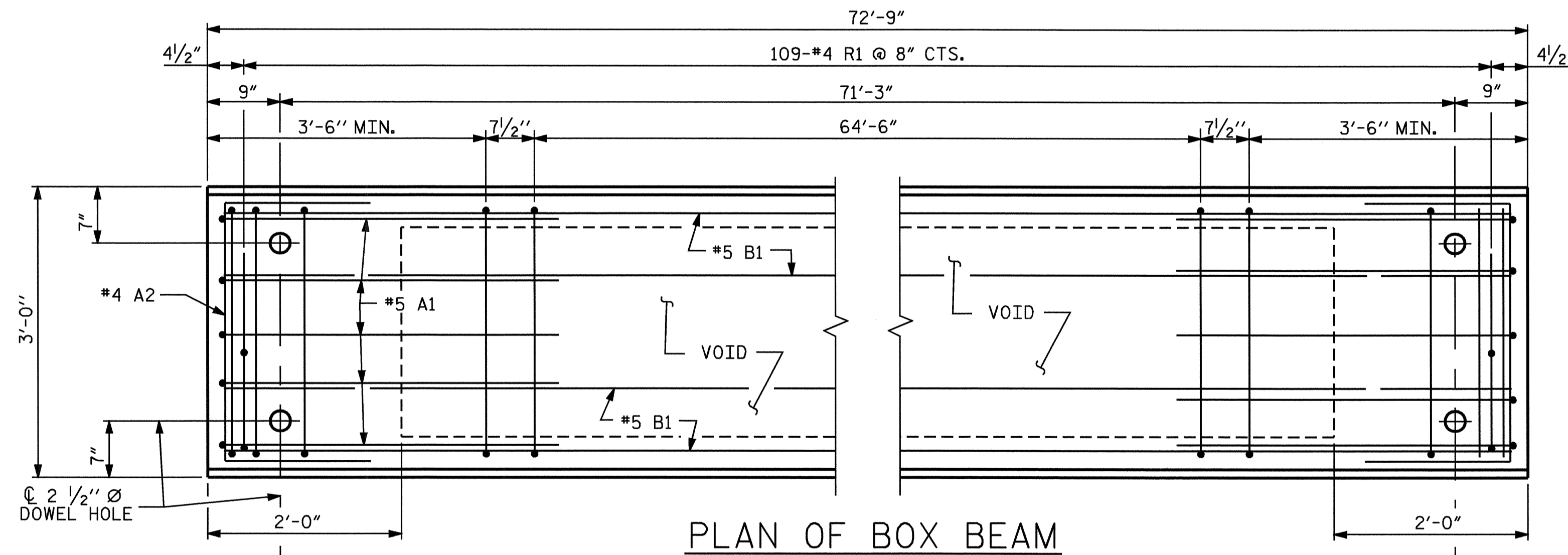


EXTERIOR BOX BEAM SECTION

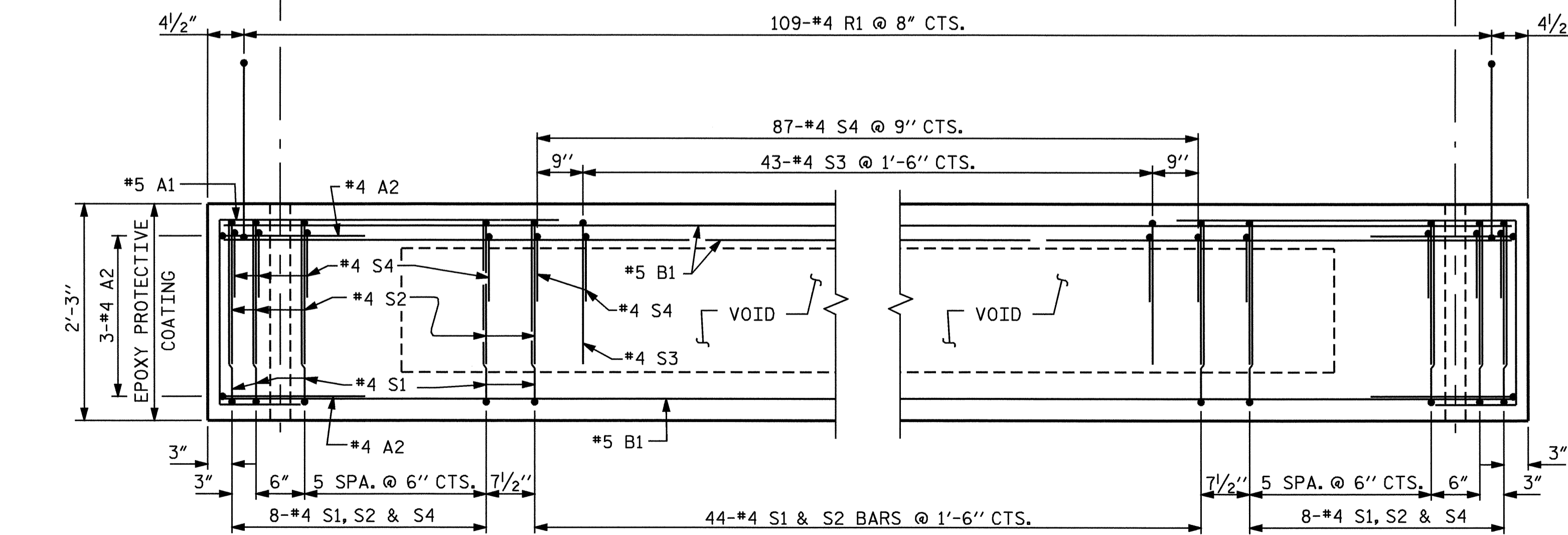


AT END OF GIRDER

1/2" Ø LOW RELAXATION STRAND LAYOUT

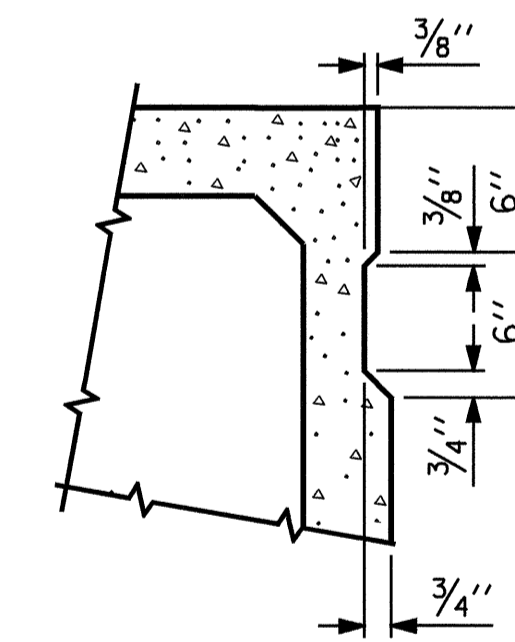


PLAN OF BOX BEAM



ELEVATION OF BOX BEAM

EXTERIOR BOX BEAM SHOWN, INTERIOR SIMILAR EXCEPT OMIT #4 R1 BARS.



SHEAR KEY DETAIL

NOTE: OMIT SHEAR KEY ON OUTSIDE FACE OF EXTERIOR BOX BEAMS.

PROJECT NO. B-3866  
LENOIR-GREENE COUNTY  
STATION: 19+21.50 -L-

SHEET 1 OF 2

STATE OF NORTH CAROLINA  
DEPARTMENT OF TRANSPORTATION  
RALEIGH

SUPERSTRUCTURE  
BI-36 PRESTRESSED  
CONCRETE BOX BEAM



DRAWN BY: T.A. HARRIS DATE: 11/2/04  
CHECKED BY: K.P. SEDAII DATE: 11/16/04

01-MAR-2005 15:42  
W:\squad\b3866\taharris\Microstation\B-3866\_sd.01.dgn  
TAHarris

REVISIONS						SHEET NO.
NO.	BY:	DATE:	NO.	BY:	DATE:	S-6
1			3			TOTAL SHEETS
2			4			19

STD.No.PCB1