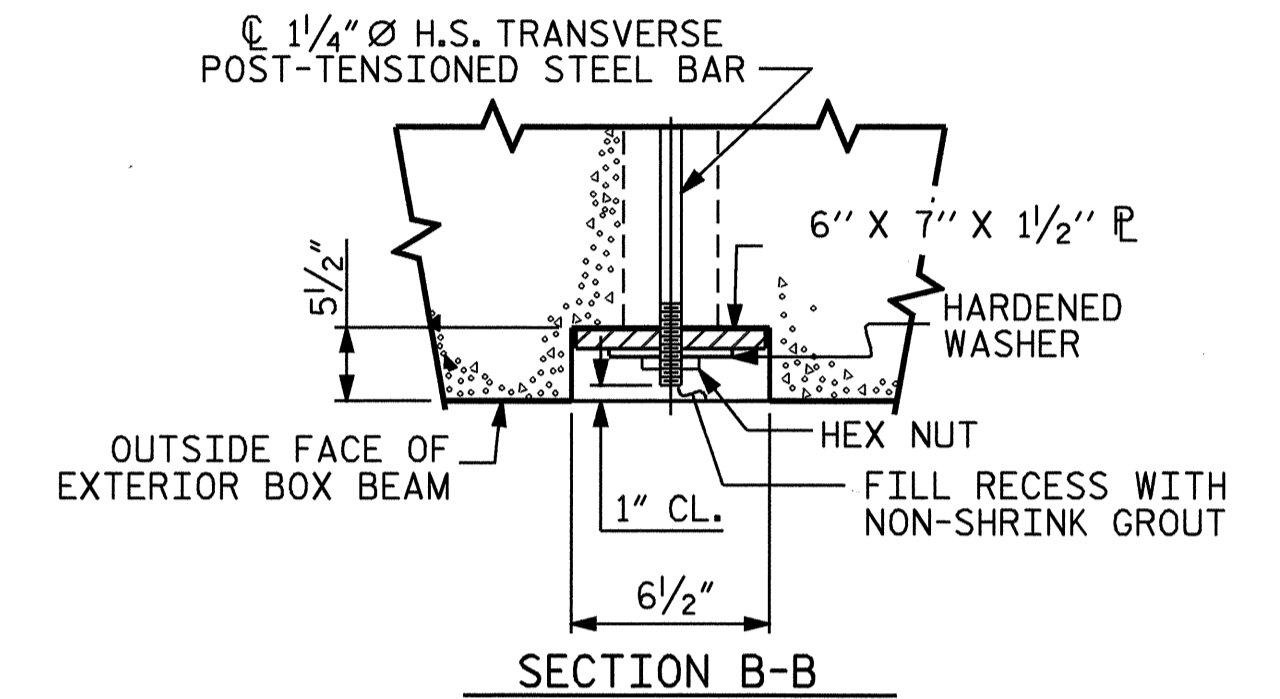
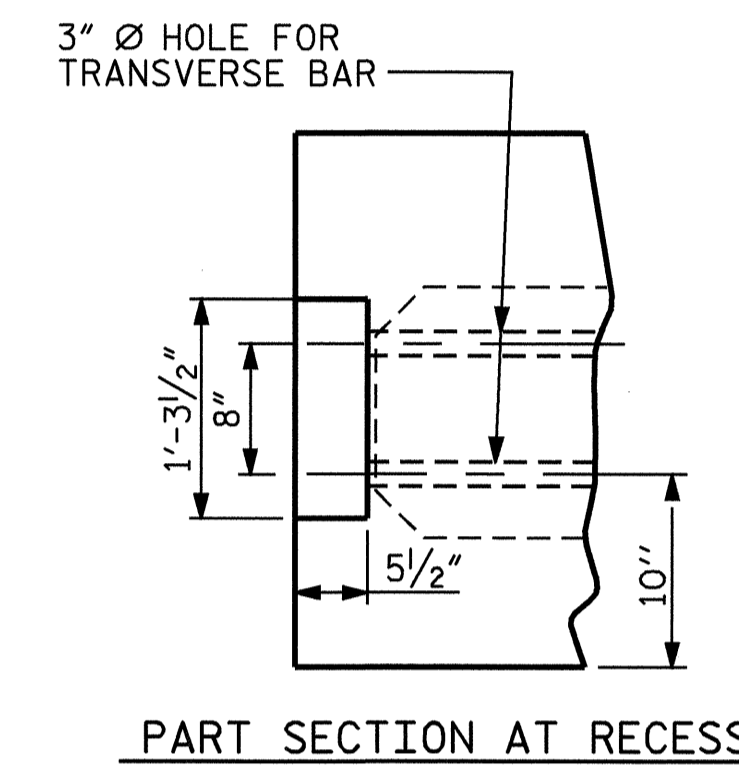
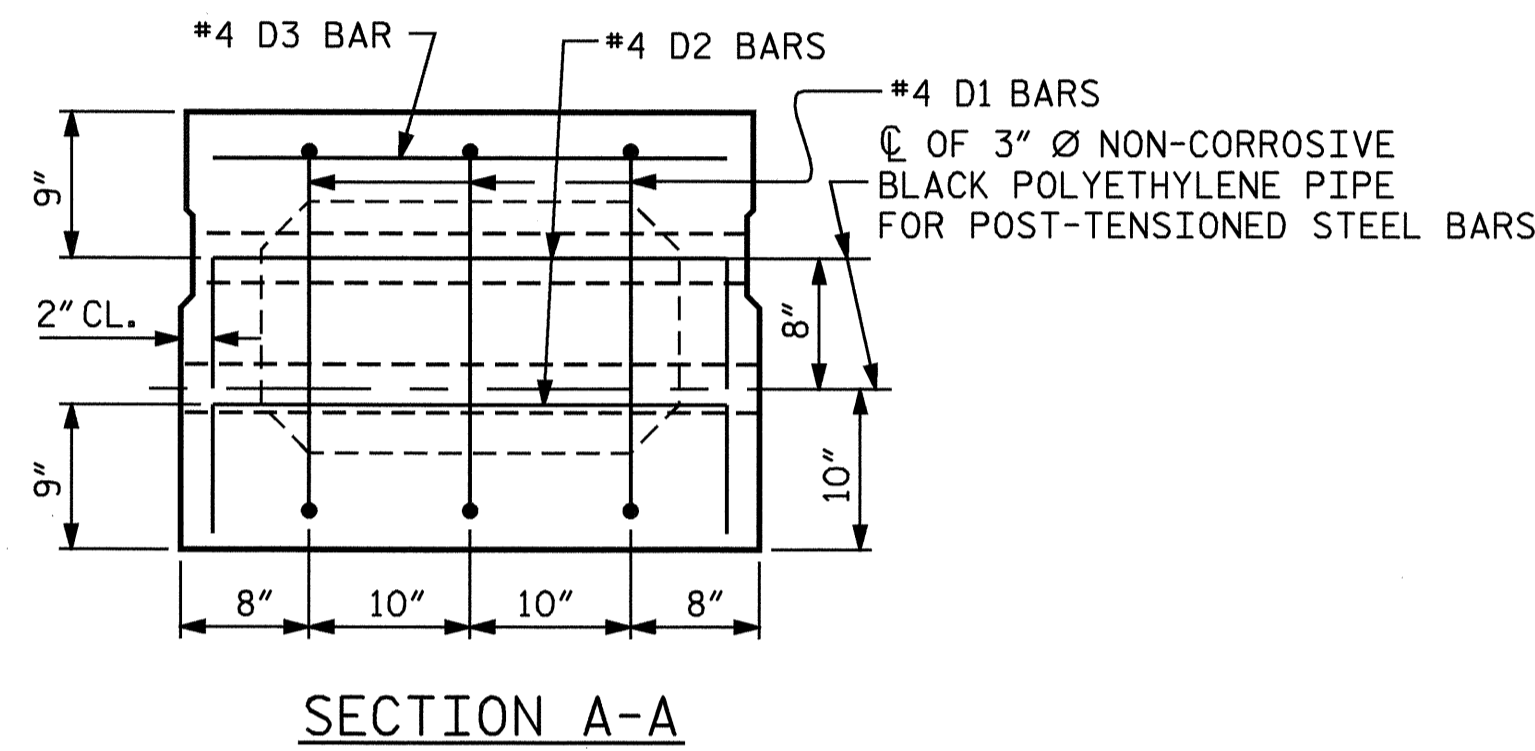
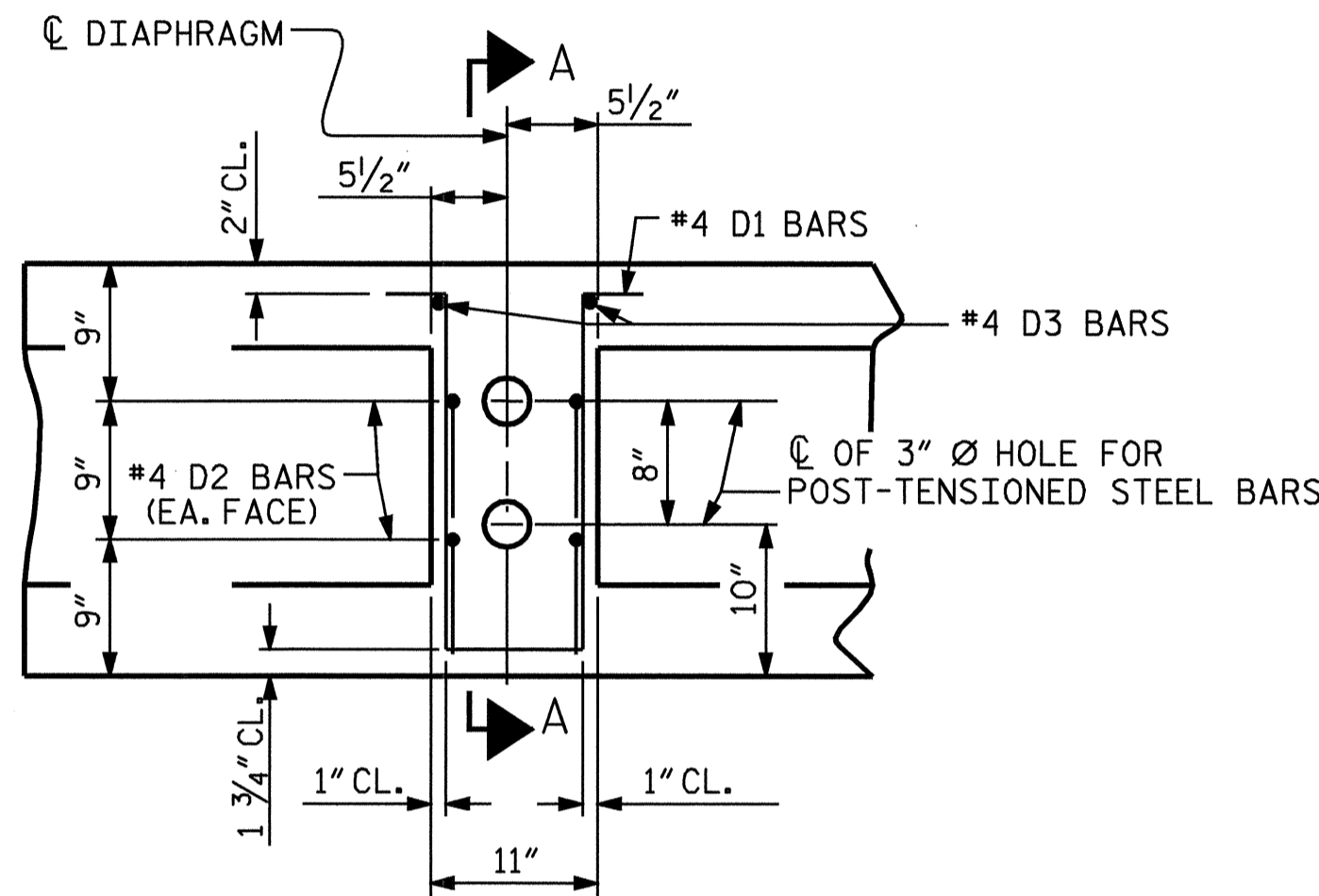
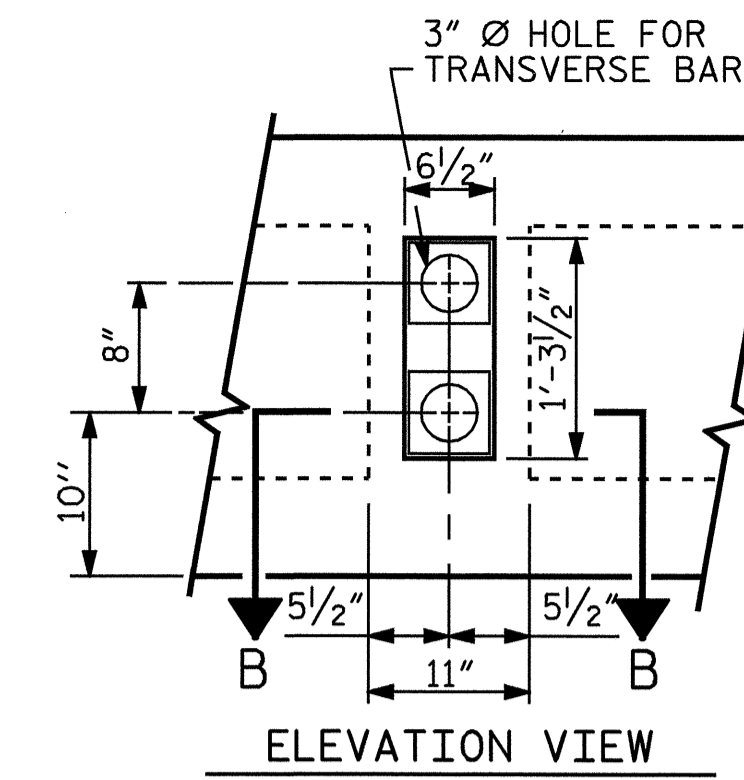
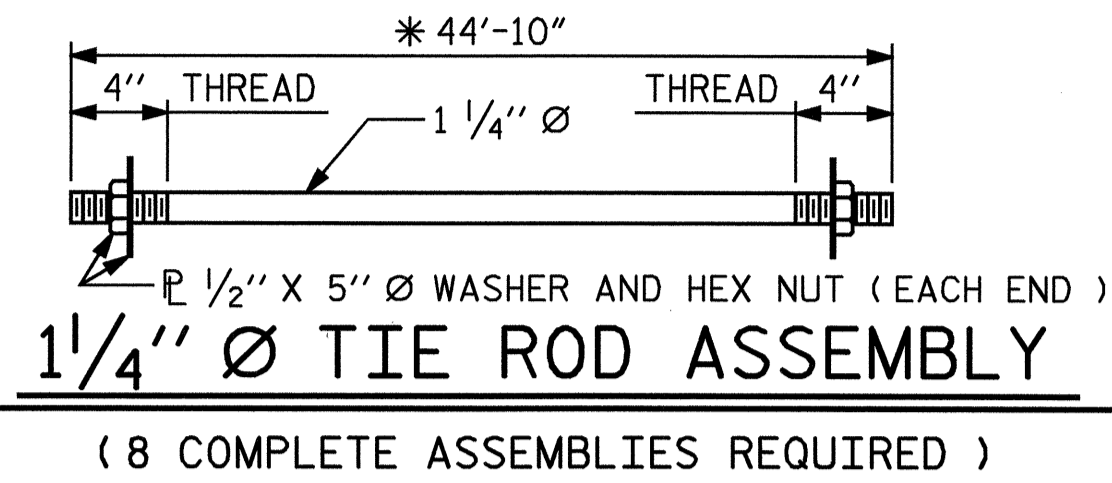


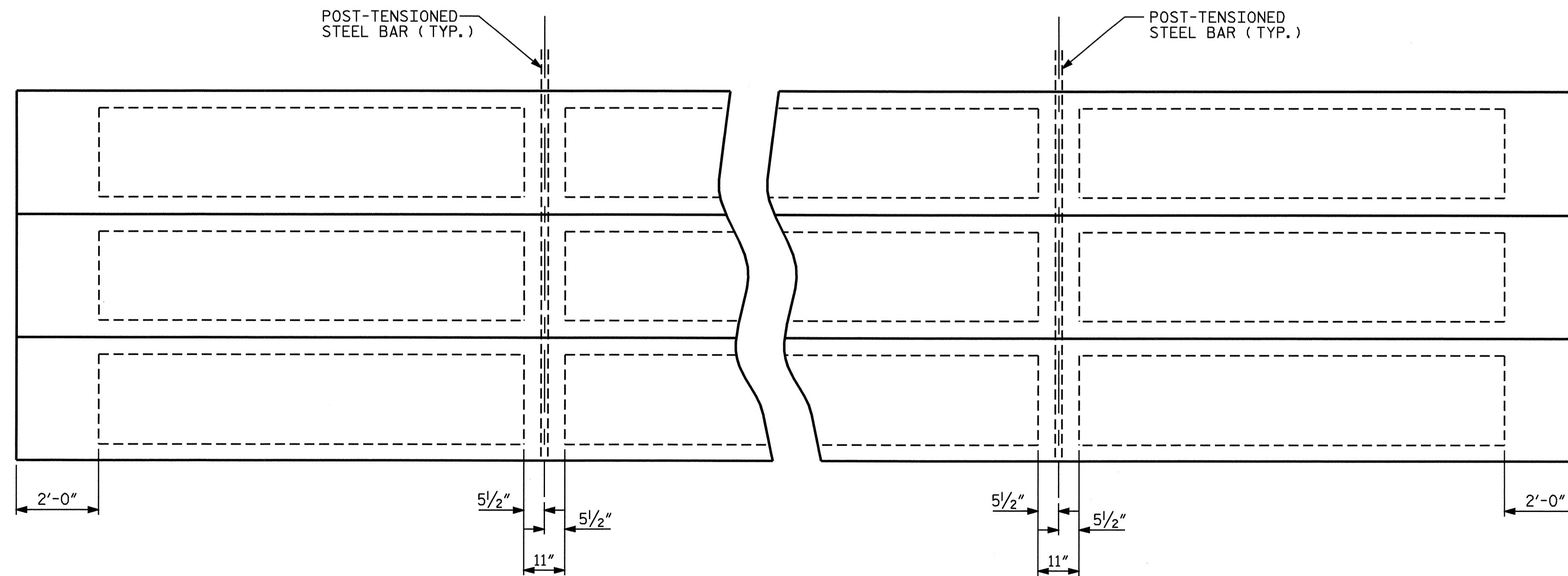
\*(FINAL LENGTH AFTER CUTTING)



ALL OF THE TRANSVERSE POST-TENSIONING ASSEMBLY, CONSISTING OF THE POST-TENSIONED STEEL BAR, ANCHOR PLATE, HARDENED WASHER AND THE HEX NUT SHALL BE GALVANIZED.

AFTER THE POST-TENSIONED STEEL BARS ARE TIGHTENED, STEEL BARS SHALL BE CUT TO PROVIDE A MINIMUM COVER OF 1" AFTER RECESS IS FILLED WITH NON-SHRINK GROUT.

DOUBLE GROUDED RECESS AT END OF POST-TENSIONED STEEL BAR OF BOX BEAM



PROJECT NO. B-3866  
LENIOR-GREENE COUNTY  
STATION: 19+21.50 -L-

SHEET 2 OF 2

STATE OF NORTH CAROLINA  
DEPARTMENT OF TRANSPORTATION  
RALEIGH

SUPERSTRUCTURE  
BI-36 PRESTRESSED  
CONCRETE BOX BEAM



DRAWN BY : T.A. HARRIS DATE : 11/2/04  
CHECKED BY : K. P. SEDAI DATE : 11/16/04

28-JAN-2005 09:29  
W:\equado\b3866\taharris\Macrostation\B-3866.ed\_G1.01.dgn  
TAHarris

REVISIONS						SHEET NO.
NO.	BY:	DATE:	NO.	BY:	DATE:	S-7
1			3			TOTAL SHEETS
2			4			19