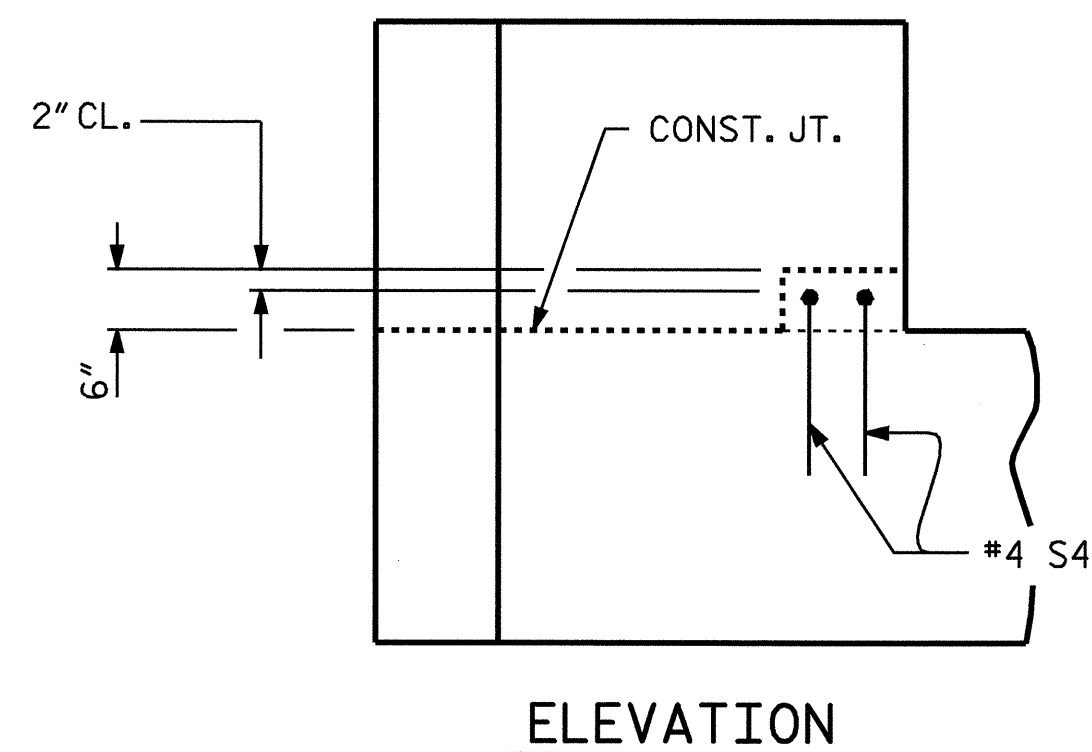
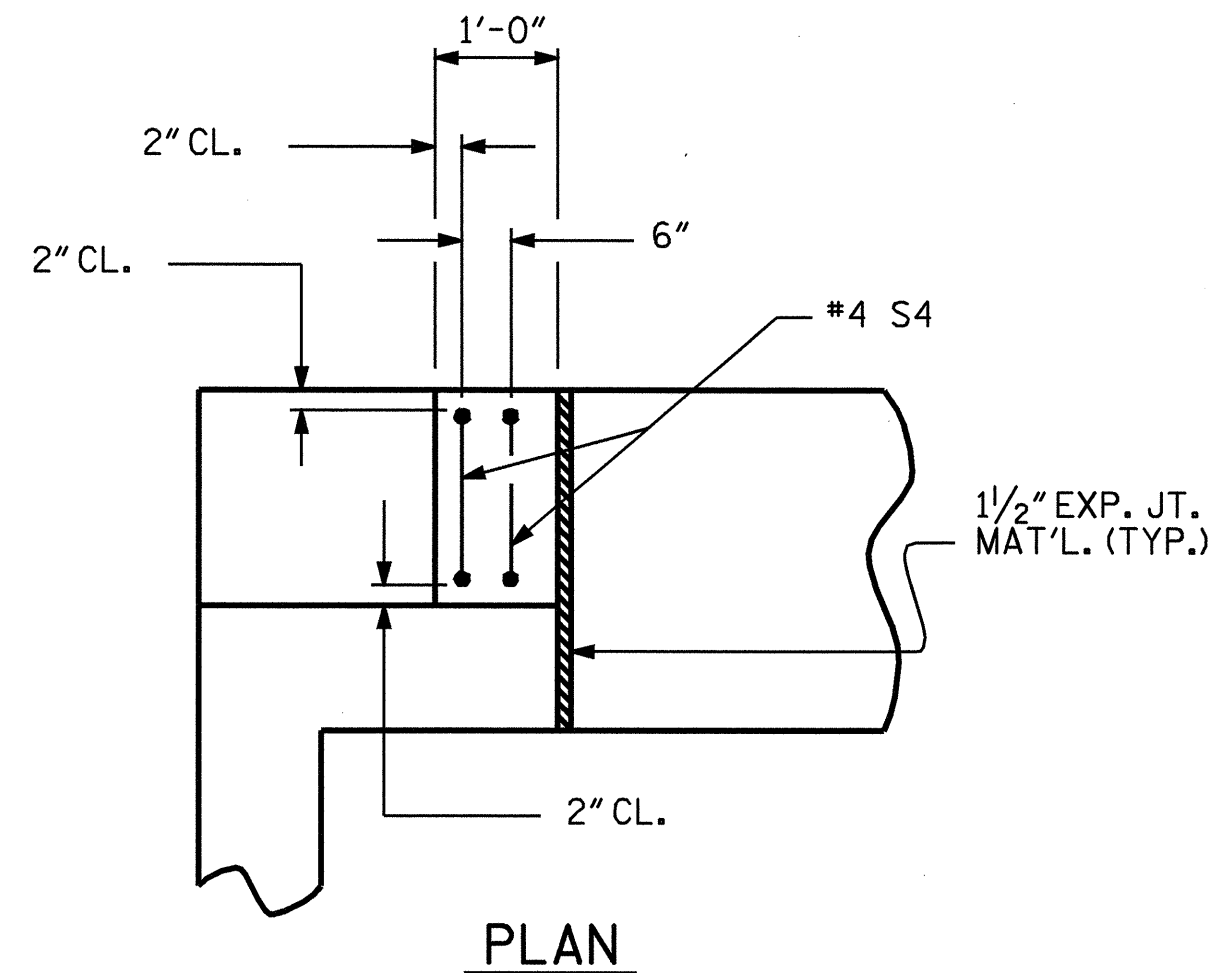


BAGGED STONE AND PIPE SHALL BE PLACED IMMEDIATELY AFTER COMPLETION OF END BENT EXCAVATION. PIPE MAY BE EITHER CONCRETE, CORRUGATED STEEL, CORRUGATED ALUMINUM ALLOY, OR CORRUGATED PLASTIC. PERFORATED PIPE WILL NOT BE ALLOWED.

BAGGED STONE SHALL REMAIN IN PLACE UNTIL THE ENGINEER DIRECTS THAT IT BE REMOVED. THE CONTRACTOR SHALL REMOVE AND DISPOSE OF SILT ACCUMULATIONS AT BAGGED STONE WHEN SO DIRECTED BY THE ENGINEER. BAGS SHALL BE REMOVED AND REPLACED WHENEVER THE ENGINEER DETERMINES THAT THEY HAVE DETERIORATED AND LOST THEIR EFFECTIVENESS.

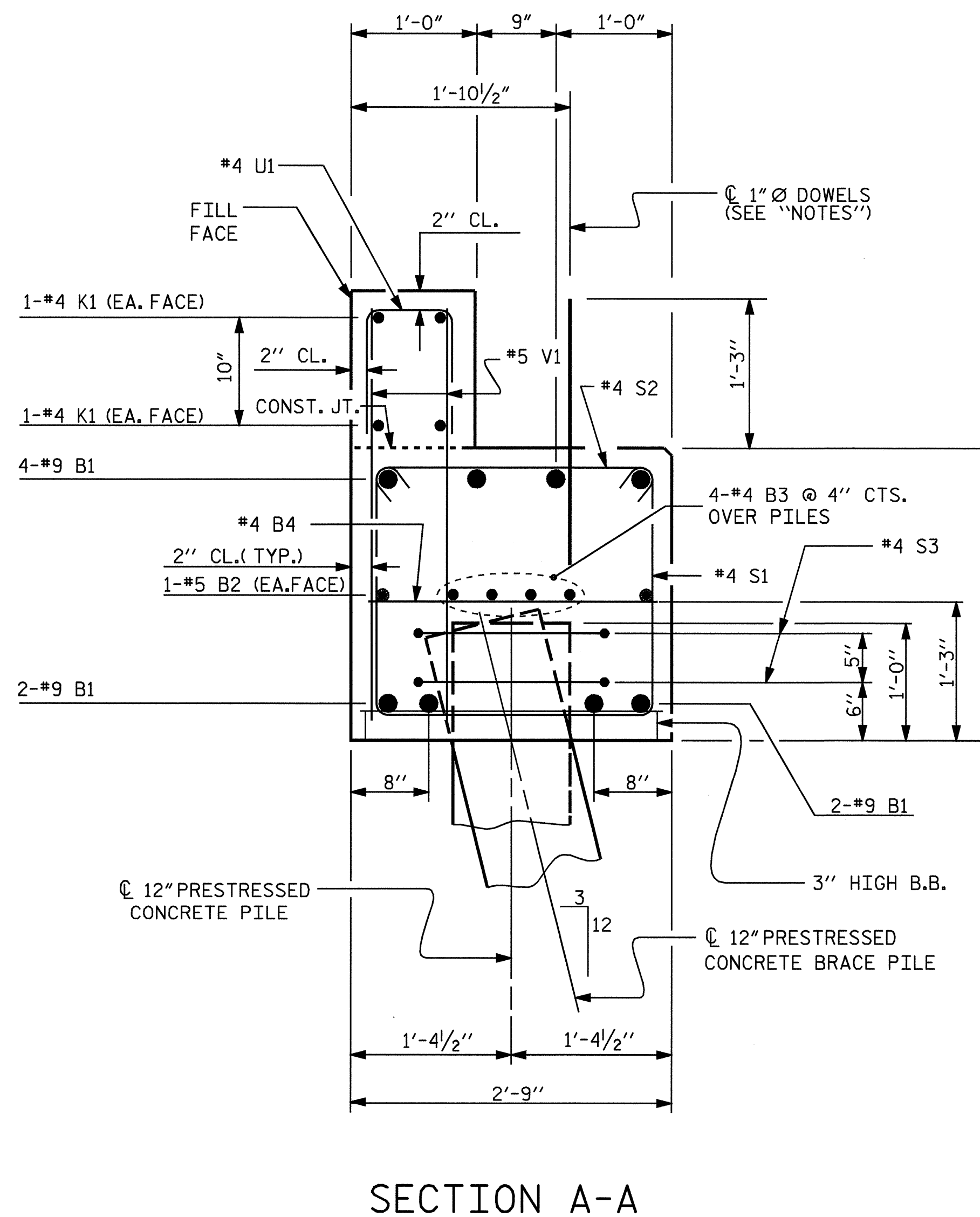
NO SEPARATE PAYMENT WILL BE MADE FOR THIS WORK AND THE ENTIRE COST OF THIS WORK SHALL BE INCLUDED IN THE UNIT CONTRACT PRICE BID FOR THE SEVERAL PAY ITEMS.

**TEMPORARY DRAINAGE AT END BENT**



**LATERAL GUIDE DETAILS**  
(EACH END SIMILAR)

BAR TYPES					BILL OF MATERIAL-END BENT 1				
BAR NO.	SIZE	TYPE	LENGTH	WEIGHT	BAR NO.	SIZE	TYPE	LENGTH	WEIGHT
B1	#9		53'-0"	1442	H1	#4		6'-4"	118
B2	#5	STR	50'-8"	106	K1	#4	STR	26'-7"	142
B3	#4	STR	26'-7"	142	K2	#4	STR	2'-6"	13
B4	#4	STR	2'-5"	21	S1	#4		7'-5"	228
					S2	#4		3'-2"	97
					S3	#4		6'-6"	104
					S4	#4		4'-5"	12
					U1	#4		3'-8"	113
					V1	#5	STR	3'-6"	336
					V2	#4	STR	4'-10"	116
TOTAL REINFORCING STEEL LBS.					2990				
CLASS A CONCRETE BREAKDOWN									
POUR 1									
CAP AND LOWER PORTION OF WINGS									CY 13.9
POUR 2									
BACKWALL AND UPPER PORTION OF WINGS									CY 4.2
POUR 3									
LATERAL GUIDES									CY 0.1
TOTAL									CY 18.2
12" SQUARE PRESTRESSED CONCRETE PILES NO. 12 LIN. FT. 420.0									



PROJECT NO. B-3866  
LENOIR-GREENE COUNTY  
 STATION: 19+21.50 -L-

SHEET 3 OF 3

STATE OF NORTH CAROLINA  
 DEPARTMENT OF TRANSPORTATION  
 RALEIGH

**SUBSTRUCTURE  
 END BENT 1**

REVISIONS						SHEET NO.	
NO.	BY:	DATE:	NO.	BY:	DATE:	S-11	
1			3			TOTAL SHEETS 19	
2			4				



DRAWN BY : T.L.CLELLAND DATE 11/30/04  
 CHECKED BY : K.P.SEDAI DATE 12/03/04