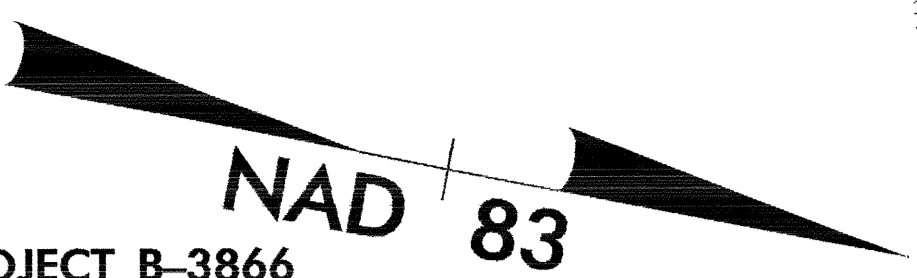


8/7/09

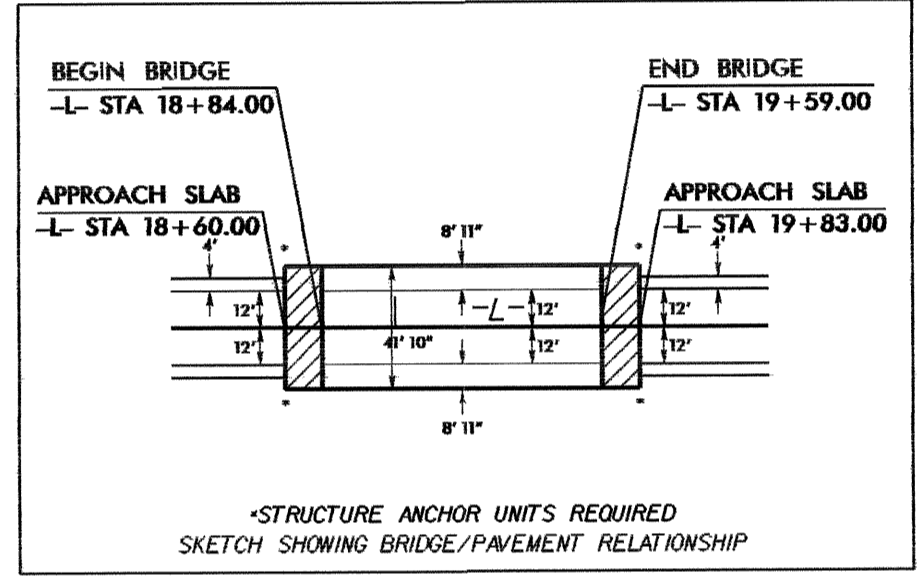
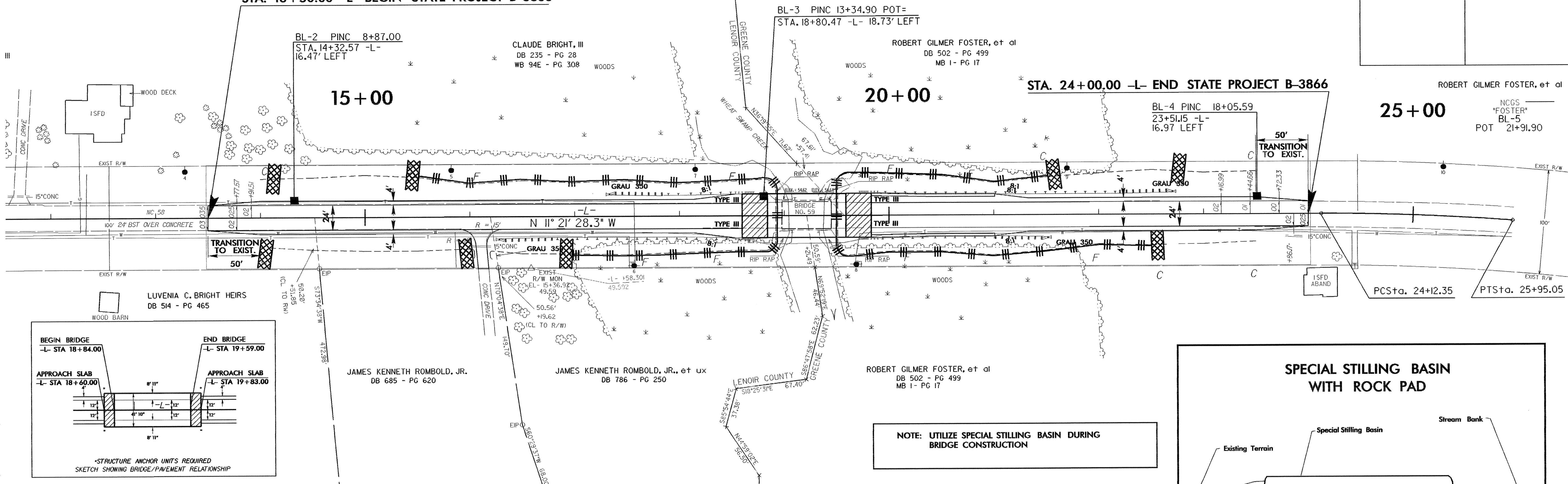
PROJECT REFERENCE NO. B-3866	SHEET NO. EC-4/CONST.4
RW SHEET NO.	
ROADWAY DESIGN ENGINEER	HYDRAULICS ENGINEER

NOTE:
TEMPORARY SILT FENCE SHALL BE INSTALLED A MINIMUM OF 3 FEET FROM TOE OF FILL IN WETLAND AREAS

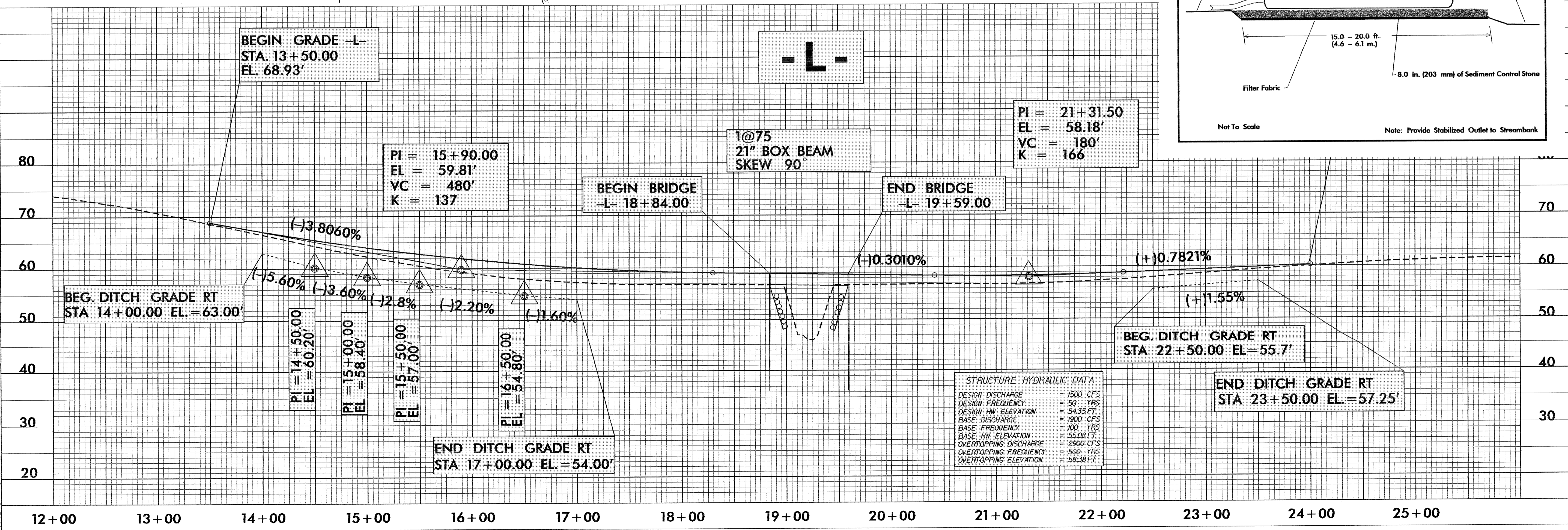
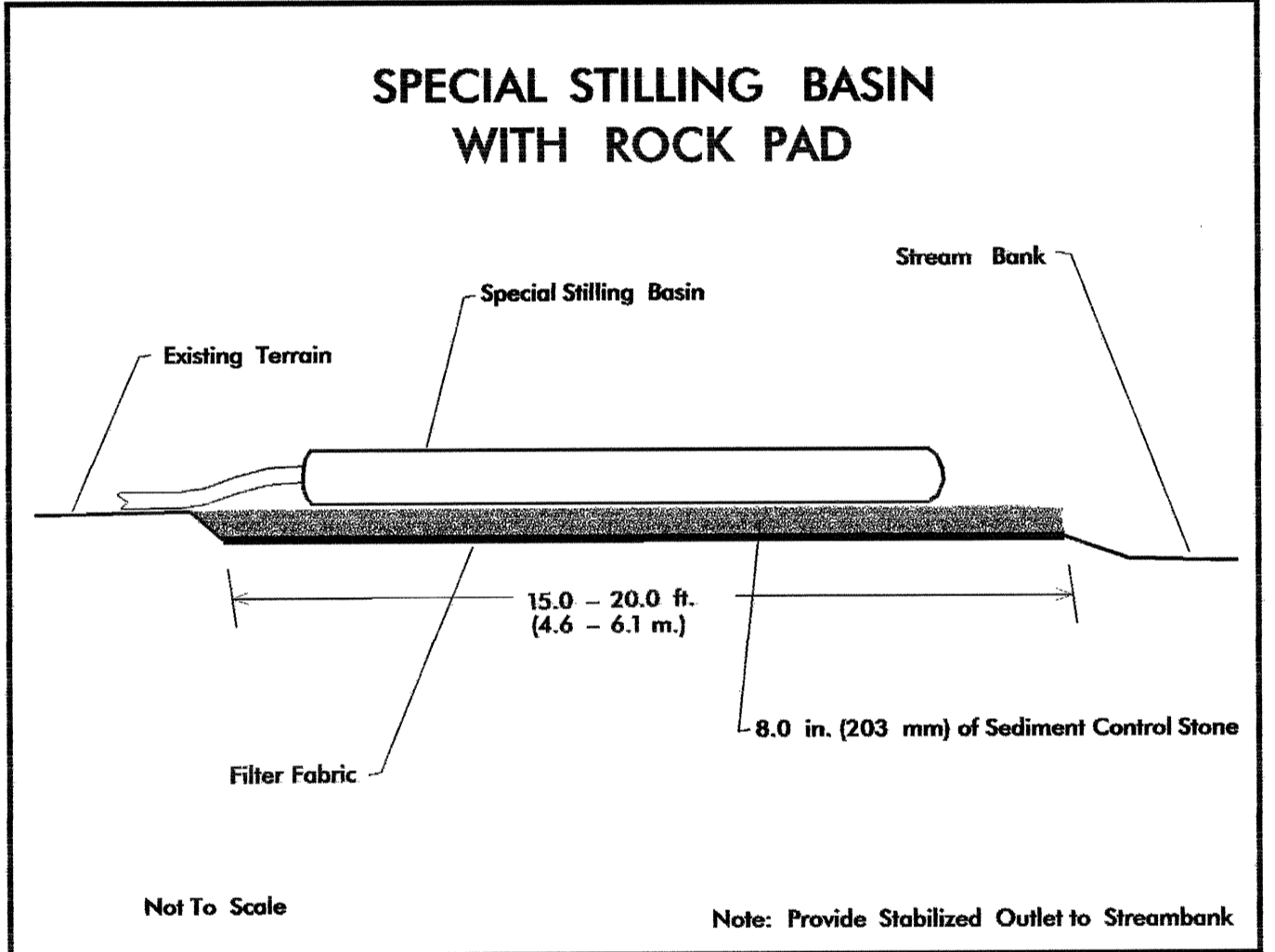


BRIDGE IS BST OVER CONCRETE W/STEEL I-BEAMS.
GUARDRAILS ARE CONCRETE, CONCRETE HEADWALLS BURIED UNDER ROCK RIP-RAP.

NOTE: HIGH WATER MARK APPROX. 6.62' IN 1999 PER VARIOUS RESIDENTS.



NOTE: UTILIZE SPECIAL STILLING BASIN DURING BRIDGE CONSTRUCTION



STRUCTURE HYDRAULIC DATA

DESIGN DISCHARGE	= 1500 CFS
DESIGN FREQUENCY	= 50 YRS
DESIGN HW ELEVATION	= 54.35 FT
BASE DISCHARGE	= 1900 CFS
BASE FREQUENCY	= 100 YRS
BASE HW ELEVATION	= 55.03 FT
OVERTOPPING DISCHARGE	= 2900 CFS
OVERTOPPING FREQUENCY	= 500 YRS
OVERTOPPING ELEVATION	= 58.38 FT

08-FEB-2005 09:38
c:\vru\br\p\p\3866\pco\p3866-rdy_psh.dgn
11:11:22.445