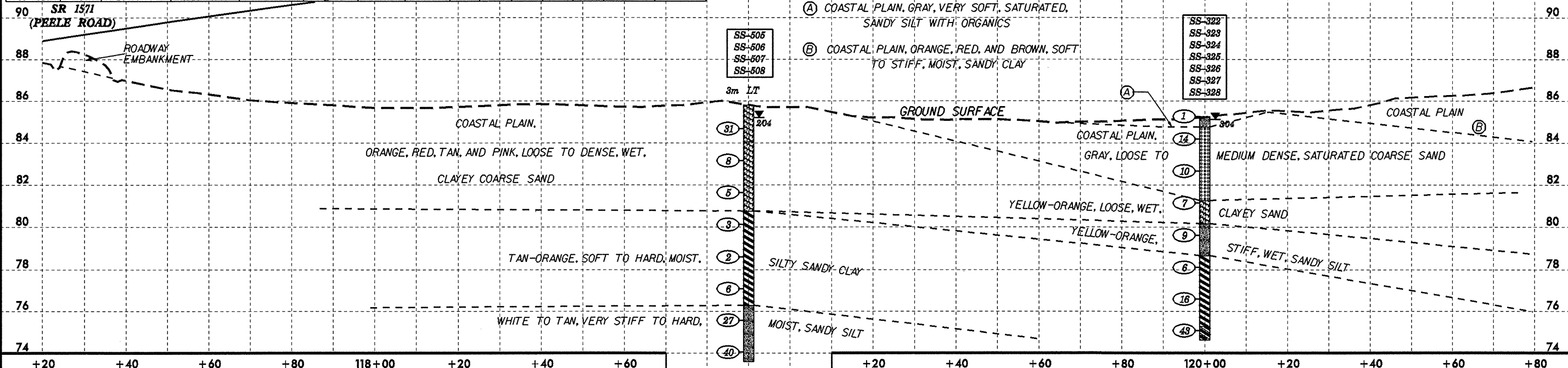
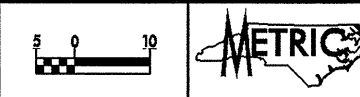


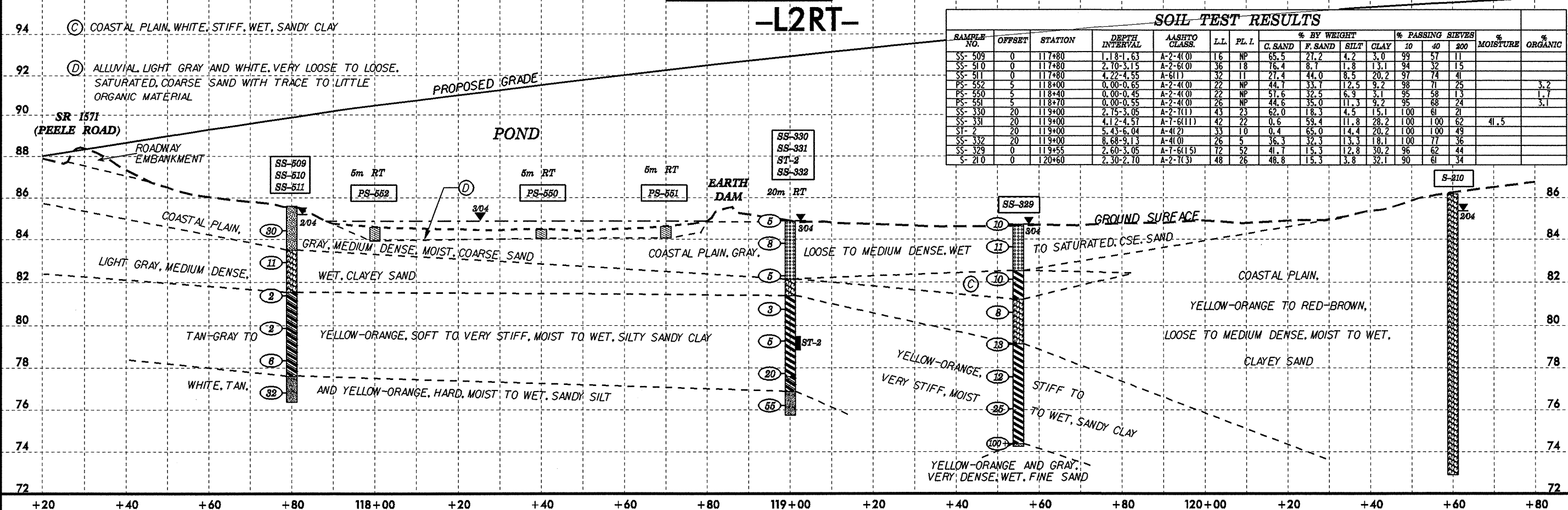
SOIL TEST RESULTS

SAMPLE NO.	OFFSET	STATION	DEPTH INTERVAL	AASHTO CLASS.	L.L.	P.L.I.	% BY WEIGHT				% PASSING SIEVES			% MOISTURE	% ORGANIC
							C. SAND	F. SAND	SILT	CLAY	10	40	200		
SS-505	-3	118+90	1.12-1.57	A-2-7(3)	49	24	43.4	24.7	5.6	26.2	93	64	33		
SS-506	-3	118+90	2.64-3.09	A-2-6(0)	34	13	72.4	11.6	2.9	13.1	99	50	17		
SS-507	-3	118+90	5.68-6.13	A-7-6(9)	45	19	3.8	56.7	9.3	30.2	100	97	57	40.3	
SS-508	-3	118+90	10.24-10.69	A-4(0)	27	4	33.5	31.0	17.3	18.1	100	82	41		
SS-322	0	120+00	0.00-0.45	A-4(0)	22	5	19.1	37.3	21.5	22.2	100	96	50		4.9
SS-323	0	120+00	1.08-1.53	A-1-b(0)	18	NP	66.6	18.3	5.0	10.1	84	48	15		
SS-324	0	120+00	4.12-4.57	A-2-6(0)	40	23	71.4	12.9	3.6	12.1	96	41	16		
SS-325	0	120+00	5.80-6.09	A-4(1)	33	9	15.0	55.0	8.9	21.1	98	86	42		
SS-326	0	120+00	7.16-7.61	A-7-6(32)	57	38	1.2	47.9	16.6	34.2	100	99	81		
SS-327	0	120+00	8.68-9.13	A-7-6(8)	45	21	6.8	44.9	22.1	26.2	100	73	51		
SS-328	0	120+00	10.20-10.65	A-6(5)	39	15	4.6	51.8	17.4	26.2	100	99	50		



+20 +40 +60 +80 118+00 +20 +40 +60 +80 119+00 +20 +40 +60 +80 120+00 +20 +40 +60 +80

-L2RT-



+20 +40 +60 +80 118+00 +20 +40 +60 +80 119+00 +20 +40 +60 +80 120+00 +20 +40 +60 +80

SOIL TEST RESULTS

SAMPLE NO.	OFFSET	STATION	DEPTH INTERVAL	AASHTO CLASS.	L.L.	P.L.I.	% BY WEIGHT				% PASSING SIEVES			% MOISTURE	% ORGANIC
							C. SAND	F. SAND	SILT	CLAY	10	40	200		
SS-509	0	117+80	1.18-1.63	A-2-4(0)	16	NP	65.5	21.2	4.2	3.0	99	57	11		
SS-510	0	117+80	2.70-3.15	A-2-6(0)	36	18	76.4	8.7	1.8	13.1	94	32	15		
SS-511	0	117+80	4.22-4.55	A-6(1)	32	11	27.4	44.0	8.5	20.2	97	74	41		
PS-552	5	118+00	0.00-0.65	A-2-4(0)	22	NP	44.7	33.7	12.5	9.2	98	71	25	3.2	
PS-550	5	118+40	0.00-0.45	A-2-4(0)	22	NP	57.6	32.5	6.9	3.1	95	58	13	1.7	
PS-551	5	118+70	0.00-0.55	A-2-4(0)	26	NP	44.6	35.0	11.3	9.2	95	68	24	3.1	
SS-330	20	119+00	2.75-3.05	A-2-7(1)	43	23	62.0	18.3	4.5	15.1	100	61	21		
SS-331	20	119+00	4.12-4.57	A-7-6(11)	42	22	0.6	59.4	11.8	28.2	100	100	62	41.5	
ST-2	20	119+00	5.43-6.04	A-4(2)	33	10	0.4	65.0	14.4	20.2	100	100	49		
SS-332	20	119+00	8.68-9.13	A-4(0)	26	5	36.3	32.3	13.3	18.1	100	77	36		
SS-329	0	119+55	2.60-3.05	A-7-6(15)	72	52	41.7	15.3	12.8	30.2	96	62	44		
S-210	0	120+60	2.30-2.70	A-2-7(3)	48	26	48.8	15.3	3.8	32.1	90	61	34		