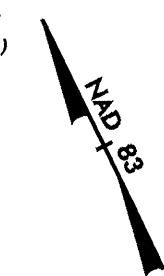
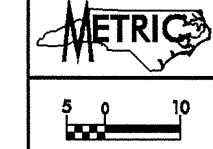


PROJECT REFERENCE NO. R-2552B		SHEET NO. 17
R/W SHEET NO.		
ROADWAY DESIGN ENGINEER	HYDRAULICS ENGINEER	
PRELIMINARY PLANS DO NOT USE FOR CONSTRUCTION		
CONST. REV.		
R/W REV.		

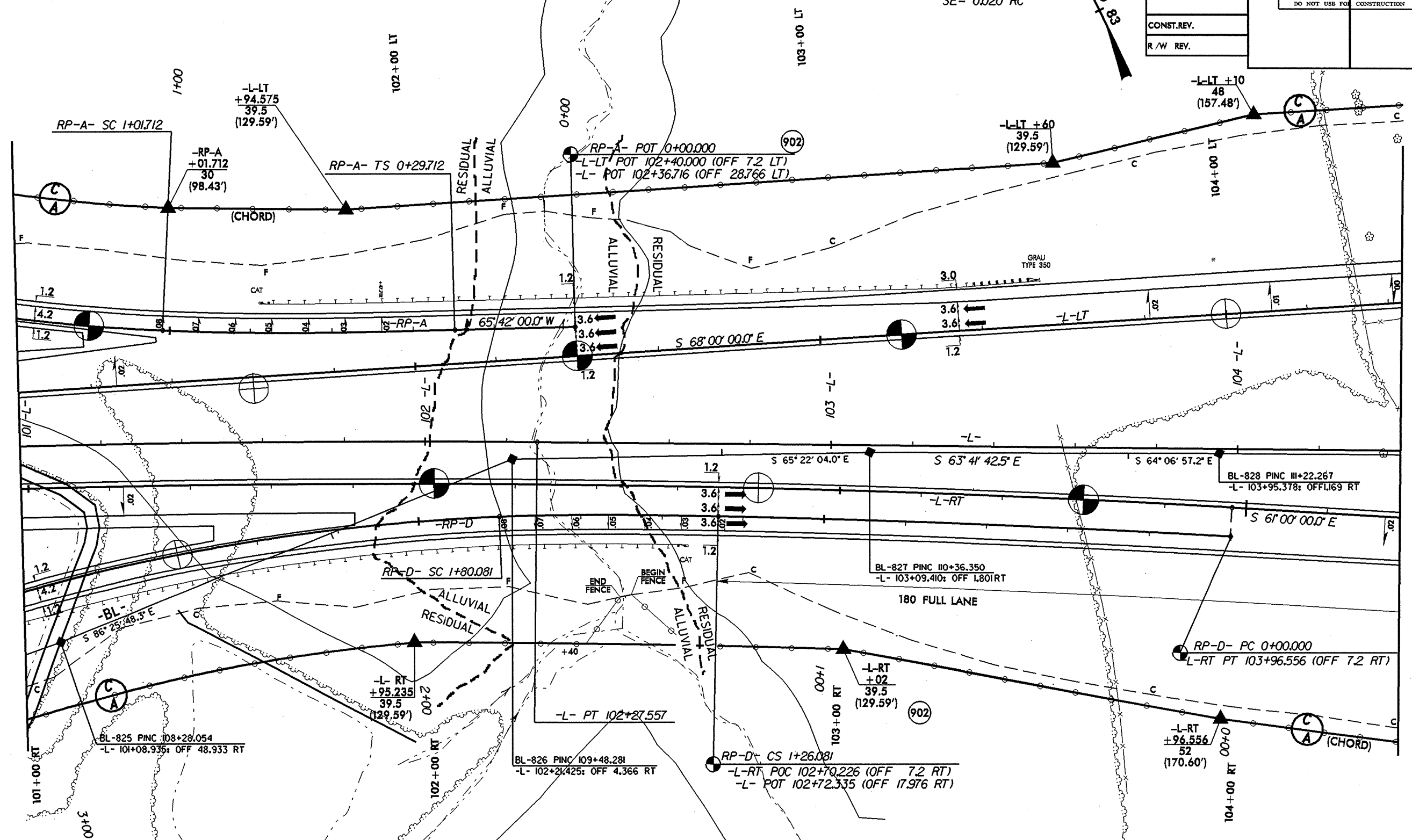


RP-A-
 $PI = 0+77.725$
 $\Delta = 4^{\circ} 07' 31''$
 $L_s = 72.0$
 $LT = 48.0130$
 $ST = 24.0119$

-L-
 $PI = 98+46.732$
 $\Delta = 12^{\circ} 00' 00'' (RT)$
 $L = 764.4562$
 $T = 383.6314$
 $R = 3.650.000$

-L-LT
 $PI = 106+18.531$
 $\Delta = 4^{\circ} 18' 17.5'' (RT)$
 $L = 274.2398$
 $T = 137.1844$
 $R = 3.650.000$
 $SE = 0.020 RC$

REVISIONS



RP-D-
 $PI = 2+98.540$
 $\Delta = 26^{\circ} 39' 26.9'' (LT)$
 $L = 232.6303$
 $T = 118.4598$
 $R = 500.000$

RP-D-
 $PI = 1+59.911$
 $\Delta = 3^{\circ} 31' 11.5''$
 $L_s = 54.0$
 $ST = 20.1852$
 $LT = 33.8299$
 $\Delta 1 = 0^{\circ} 25' 32.7''$
 $\Delta 2 = 3^{\circ} 05' 38.8''$
 $R1 = 3.632.3000$
 $R2 = 500.000$

RP-D-
 $PI = 0+63.047$
 $\Delta = 1^{\circ} 59' 19.7'' (LT)$
 $L = 126.0807$
 $T = 63.0467$
 $R = 3.632.3000$

-L-RT
 $PI = 99+32.404$
 $\Delta = 14^{\circ} 41' 42.6'' (RT)$
 $L = 933.4555$
 $T = 469.3032$
 $R = 3.639.5000$
 $SE = 0.020 RC$

 SYSTEMS
