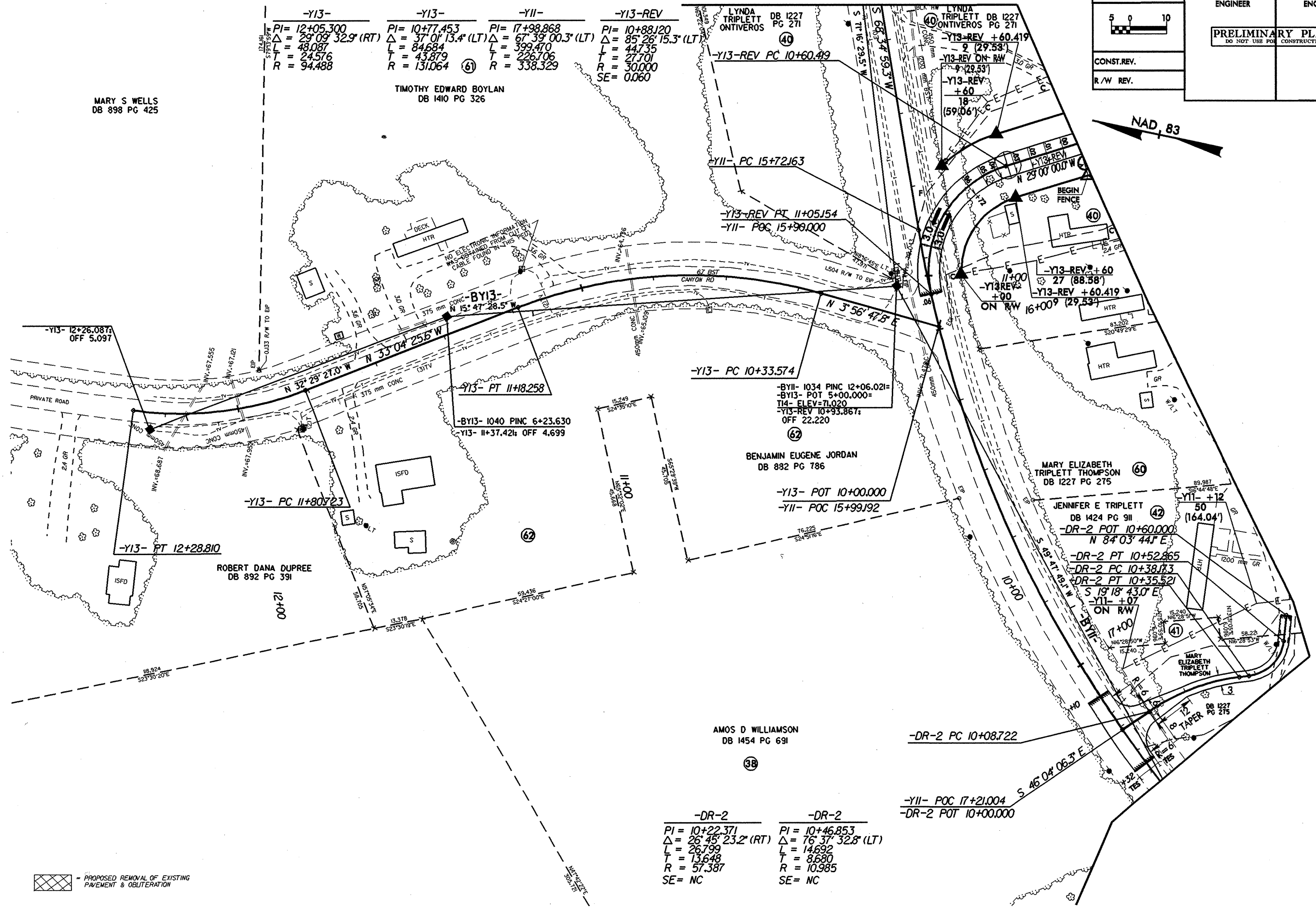




-Y13-	-Y13-	-Y11-	-Y13-REV
PI = 12+05.300	PI = 10+77.453	PI = 17+98.868	PI = 10+88.120
$\Delta = 29^{\circ} 09' 32.9''$ (RT)	$\Delta = 37^{\circ} 01' 13.4''$ (LT)	$\Delta = 67^{\circ} 39' 00.3''$ (LT)	$\Delta = 85^{\circ} 26' 15.3''$ (LT)
L = 48.087	L = 84.684	L = 399.470	L = 44.735
T = 24.576	T = 43.879	T = 226.706	T = 27.701
R = 94.488	R = 131.064 (61)	R = 338.329	R = 30.000
			SE = 0.060

TIMOTHY EDWARD BOYLAN
DB 1410 PG 326

MARY S WELLS
DB 898 PG 425



-DR-2	-DR-2
PI = 10+22.371	PI = 10+46.853
$\Delta = 26^{\circ} 45' 23.2''$ (RT)	$\Delta = 76^{\circ} 37' 32.8''$ (LT)
L = 26.799	L = 14.692
T = 13.648	T = 8.680
R = 57.387	R = 10.985
SE = NC	SE = NC

- PROPOSED REMOVAL OF EXISTING PAVEMENT & OBLITERATION

REVISIONS

*****SYSTEMS TIME*****
*****CONSTRUCTION*****
*****SURVEYING*****
*****ENGINEERING*****