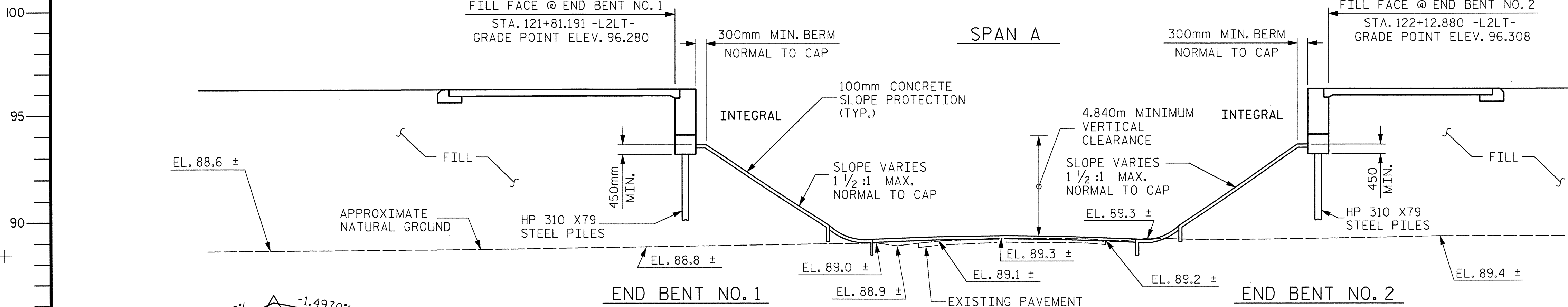


121+60 121+70 121+80 121+90 122+00 122+10 122+20



GRADE DATA -L2LT-
 +3.8500% -1.4970%
 P.I. STA. = 120+20.000
 EL. = 100.997m
 VC = 870m

GRADE DATA -Y1-
 +1.2354% -0.8154%
 P.I. STA. = 12+60.000
 EL. = 90.174m
 VC = 130m

NOTES

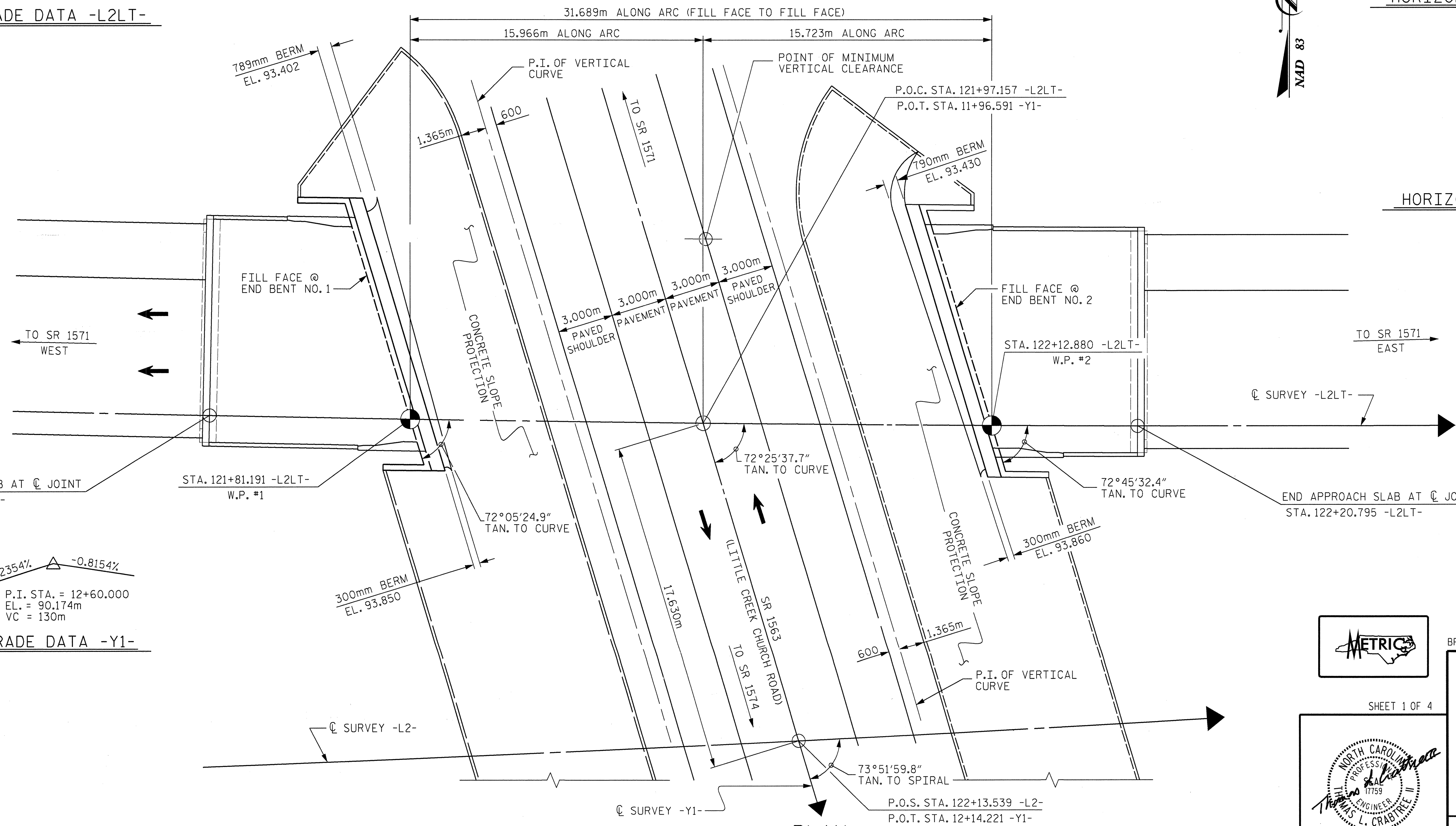
FOR NOTES, SEE GENERAL DRAWING SHEET 4 OF 4.

HORIZONTAL CURVE DATA -L2LT-

PI STA. 117+99.379
 Δ = 23°11'01.2" (LT)
 L = 1098.574
 T = 556.906
 R = 2715.000
 SE = 0.03

HORIZONTAL CURVE DATA -Y1-

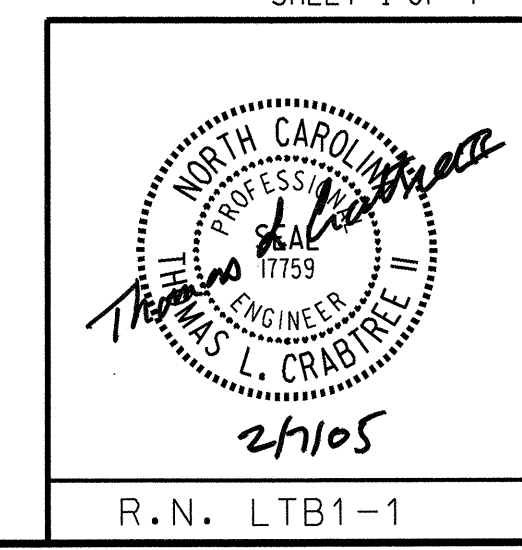
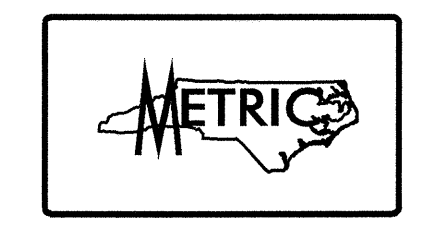
PI STA. 12+87.560
 Δ = 2°32'36.0" (RT)
 L = 106.079
 T = 53.048
 R = 2389.728
 SE = 0.03



PLAN
 (END BENT NO. 1 AND END BENT NO. 2 ARE PARALLEL)
 (PILES NOT SHOWN IN PLAN VIEW FOR CLARITY)



PROJECT NO. R-2552C
 JOHNSTON COUNTY
 STATION: 121+97.157 -L2LT- POC
 11+96.591 -Y1- POT
 BRIDGE NO. 602



STATE OF NORTH CAROLINA
 DEPARTMENT OF TRANSPORTATION
 RALEIGH

GENERAL DRAWING
 FOR LEFT LANE BRIDGE ON
 US 70 (CLAYTON BYPASS)
 OVER SR 1563
 BETWEEN SR 1571 (WEST)
 AND SR 1571 (EAST)

REVISIONS						SHEET NO.
NO.	BY:	DATE:	NO.	BY:	DATE:	5-260
1			3			TOTAL SHEETS
2			4			42

DRAWN BY : LAH DATE : 07/04
 CHECKED BY : CJW DATE : 07/04
 APPROVED BY : DATE :

DATE: 8/11/2005 TIME: 16:44:20
 USER: M:\proj\121+97.157-L2LT-Br1.dwg
 DGN: K:\78762-L2LT-Br1.dwg

DATE: 2/4/2005 TIME: 15:44:20