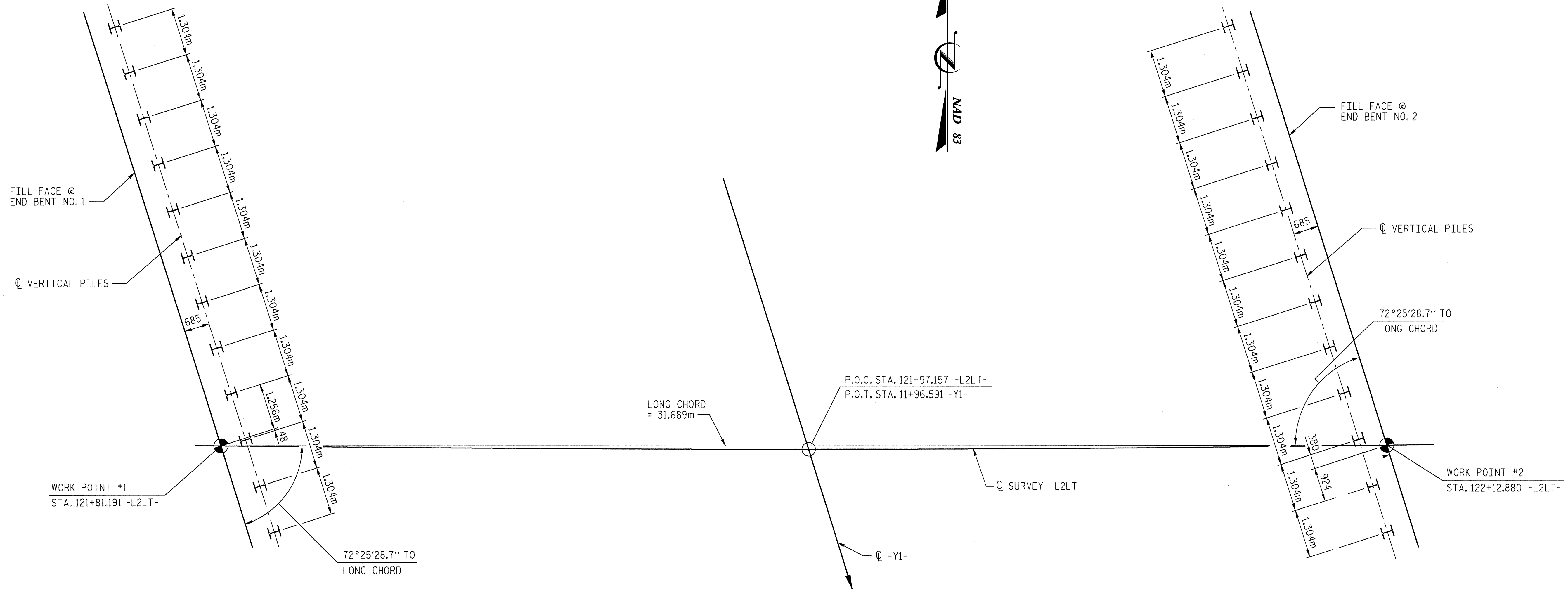


NOTES

1. ALL PILES ARE STEEL HP310 x 79.
2. PILE DIMENSIONS ARE SHOWN TO THE CENTERLINE OF THE PILES.
3. PILES FOR BOTH END BENTS SHALL BE DRIVEN TO A MINIMUM BEARING CAPACITY OF 530KN EACH.
4. WHEN DRIVING PILES, THE MAXIMUM BLOW COUNT SHALL NOT BE EXCEEDED.



FOUNDATION LAYOUT

Prepared by
EarthTech
 A Tyco International Ltd. Company
 701 Corporate Center Drive, Suite 475
 Raleigh, NC 27607
 (919) 854-6200 - (919) 854-6259 (Fax)

PROJECT NO. R-2552C
JOHNSTON COUNTY
 STATION: 121+97.157 -L2LT-

SHEET 2 OF 4

2/105
 R.N. LTB1-2

STATE OF NORTH CAROLINA
 DEPARTMENT OF TRANSPORTATION
 RALEIGH

GENERAL DRAWING
 FOR LEFT LANE BRIDGE ON
 US 70 (CLAYTON BYPASS)
 OVER SR 1563
 BETWEEN SR 1571 (WEST)
 AND SR 1571 (EAST)

REVISIONS				SHEET NO.	
NO.	BY:	DATE:	NO.	BY:	DATE:
1			3		
2			4		
				TOTAL SHEETS	431

DRAWN BY : MTB DATE : 11/04
 CHECKED BY : TLC DATE : 12/04
 APPROVED BY : DATE :

USER: MinJofTon
 DATE: 2/4/2005
 TIME: 15:44:08
 D:\N\8762\U1_Bridge\CADD\Found.L1.dgn

USER: MinJofTon
 DATE: 2/4/2005
 TIME: 15:44:08
 D:\N\8762\U1_Bridge\CADD\Found.L1.dgn