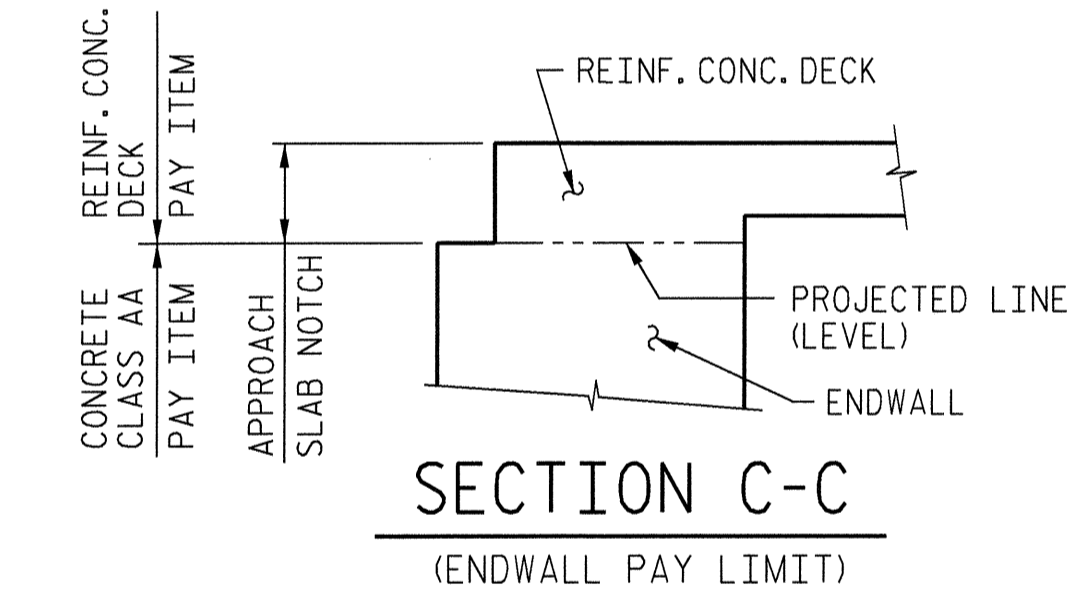
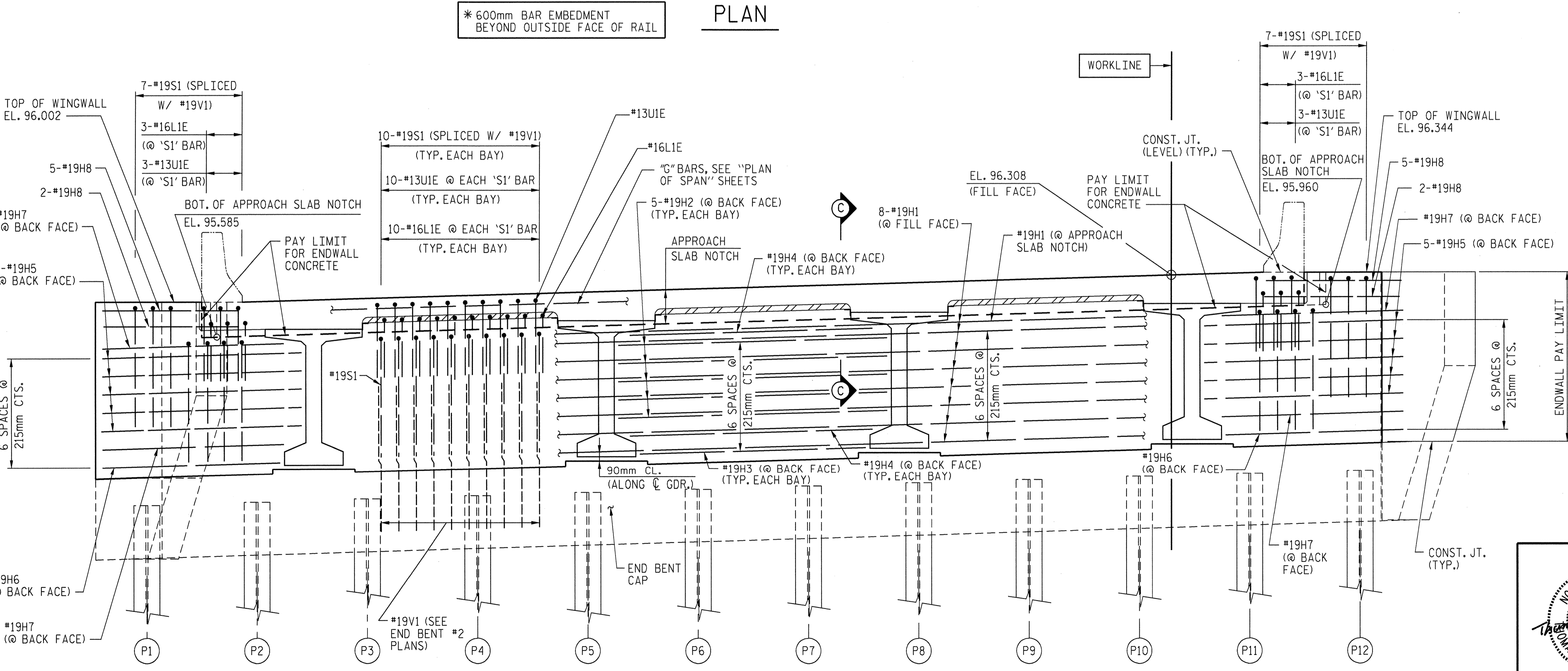
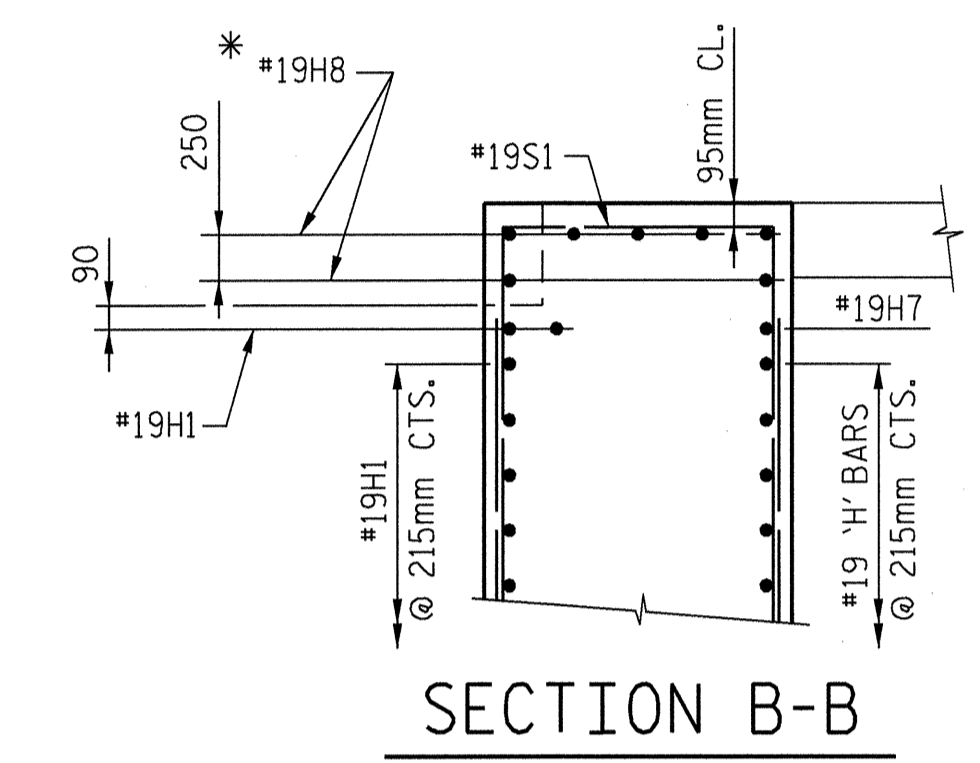
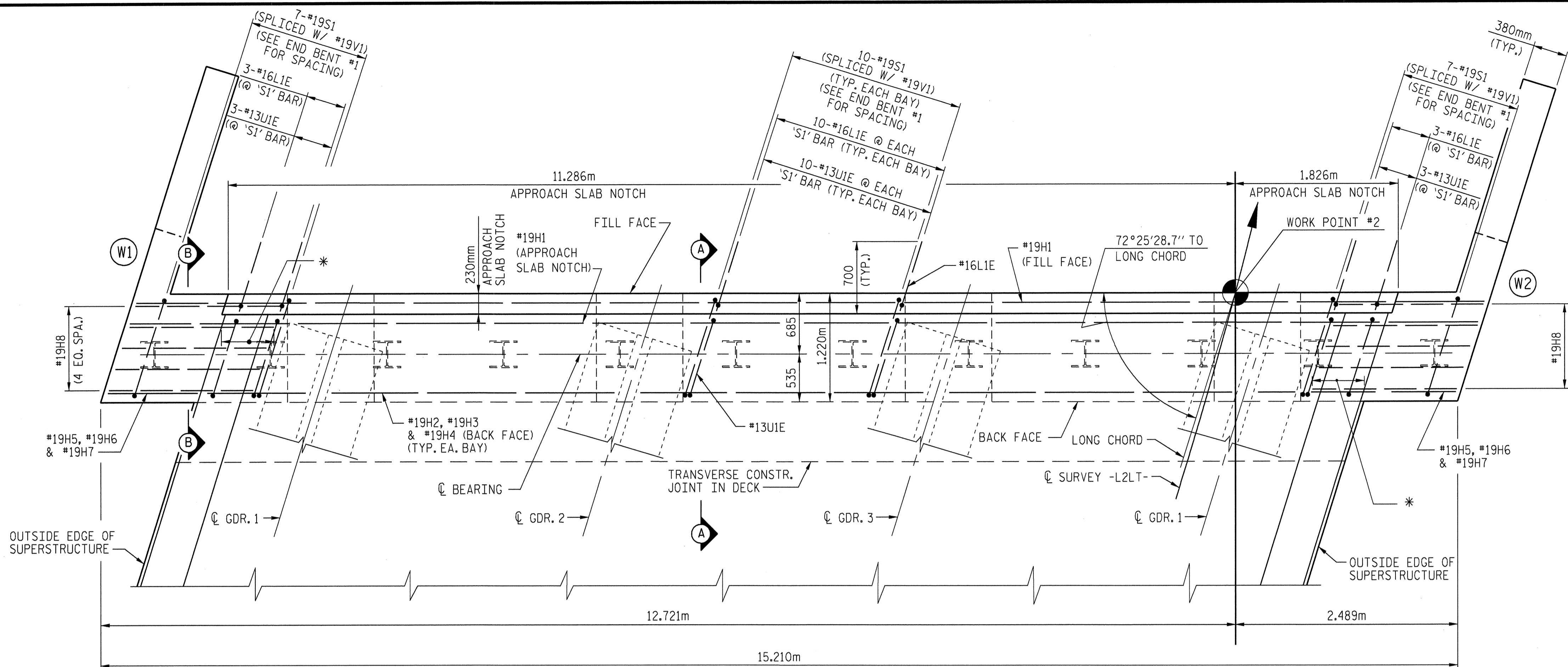


NOTES

- FOR UPPER WINGWALL DETAILS AND REINFORCING STEEL, SEE END BENT NO. 2, SHEET 2 OF 3.
- DECK REINFORCING NOT SHOWN FOR CLARITY.
- THE CONTRACTOR SHALL PAY PARTICULAR ATTENTION TO INSURE THAT THE AREAS BETWEEN THE BOTTOM OF THE GIRDERS AND THE BRIDGE SEATS ARE COMPLETELY FILLED WITH CONCRETE.
- ENDWALL QUANTITIES ARE INCLUDED IN SUPERSTRUCTURE QUANTITIES.
- ENDWALL CONCRETE SHALL BE CLASS AA AND PAID FOR AS "CLASS AA CONCRETE".
- ENDWALL CONCRETE QUANTITIES INCLUDE UPPER WINGWALL, DEFINED BY CONSTRUCTION JOINT. SEE "SUBSTRUCTURE END BENT NO. 2" SHEETS.
- FOR SECTION A-A, SEE "SUPERSTRUCTURE PLAN OF SPAN" SHEETS.
- BARS LIE AND UIE SHALL BE MATCHED WITH BARS SI AS SHOWN.



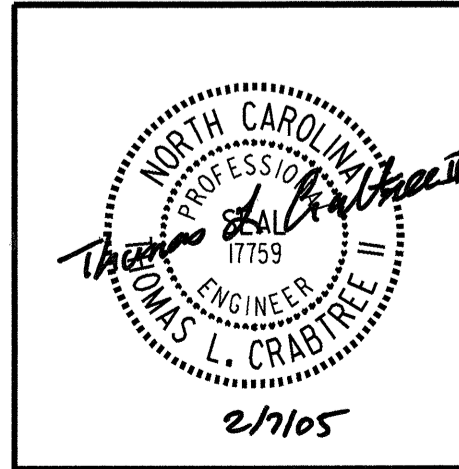
UPPER WINGWALL DETAILS AND REINFORCING NOT SHOWN FOR CLARITY. SEE "SUBSTRUCTURE END BENT NO. 2" SHEET.

ENDWALL "H" BARS SHALL LAP WITH WINGWALL "H" BARS.



PROJECT NO. R-2552C
JOHNSTON COUNTY
STATION: 121+97.157 -L2LT-

STATE OF NORTH CAROLINA DEPARTMENT OF TRANSPORTATION RALEIGH					
SUPERSTRUCTURE (LEFT LANE BRIDGE) END BENT NO. 2 - ENDWALL DIAPHRAGM DETAILS					
SHEET NO. S-274					
TOTAL SHEETS 431					
REVISIONS					
NO.	BY:	DATE:	NO.	BY:	DATE:
1			3		
2			4		



DRAWN BY: MTB DATE: 11/04
CHECKED BY: TLC DATE: 12/04
APPROVED BY: DATE:

R.N. LTB1-9