

PLAN

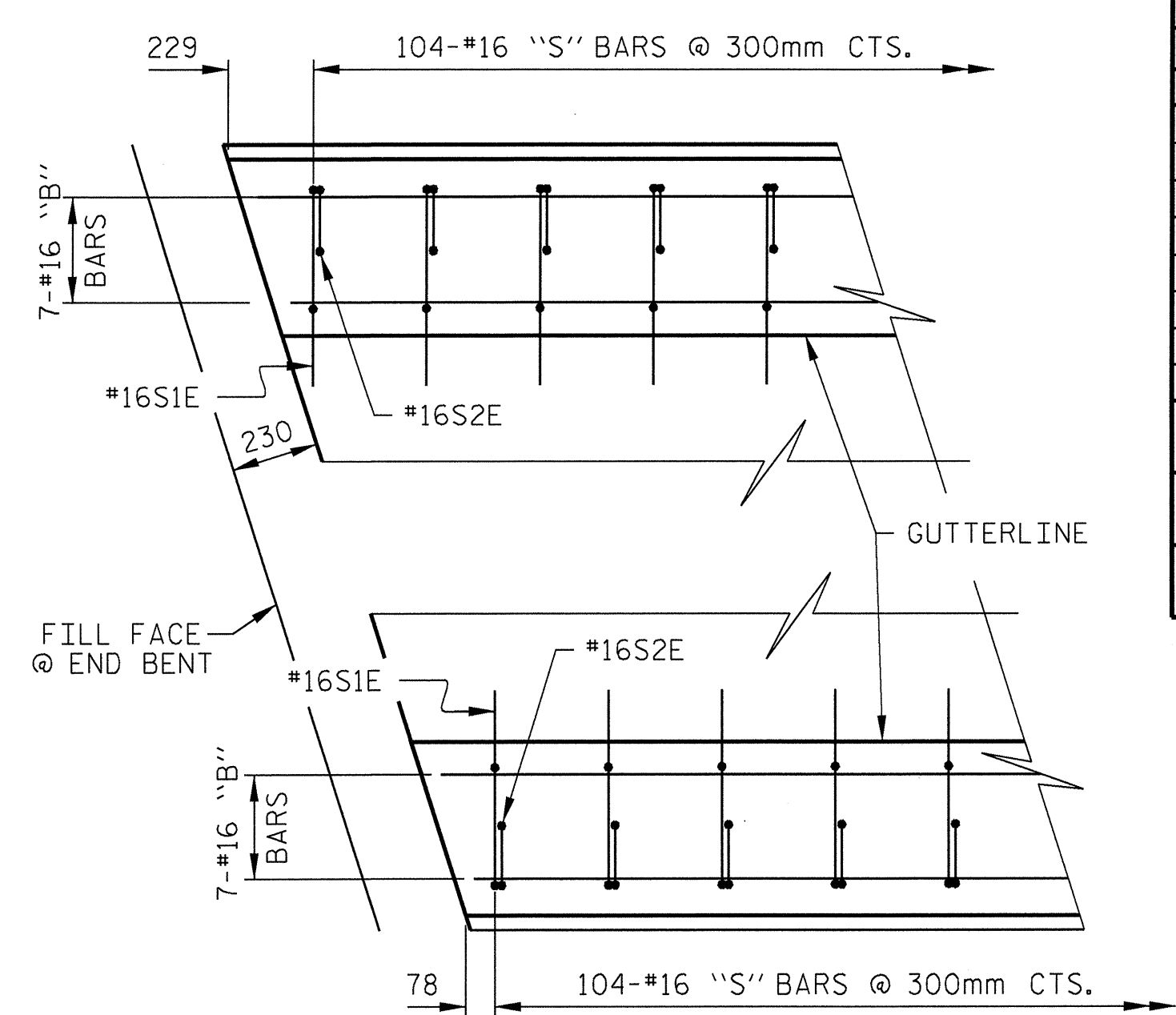
NOTE: #5S1E AND #5S2E BARS MAY BE SHIFTED SLIGHTLY IN ORDER TO MAINTAIN A 50mm MINIMUM CLEARANCE TO EXPANSION JOINT IN RAIL.

NOTES

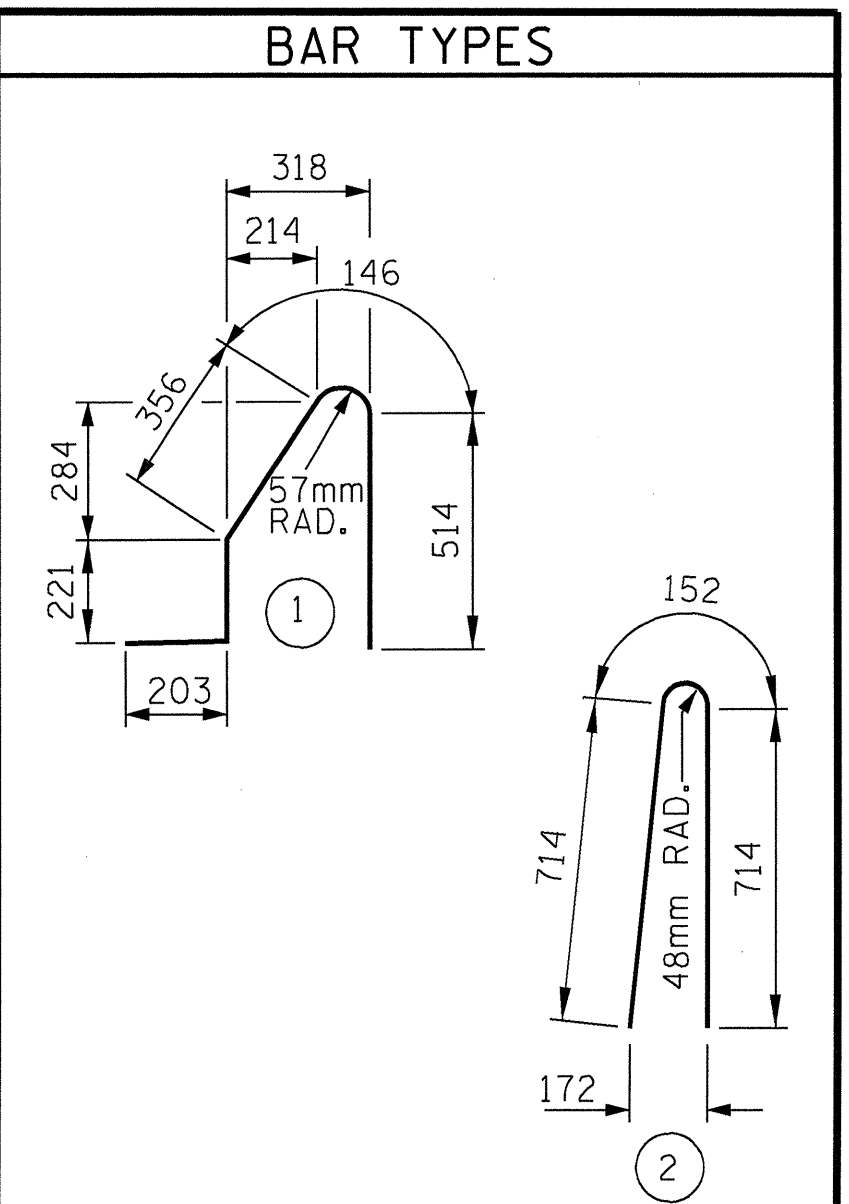
THE BARRIER RAIL IN THE SPAN SHALL NOT BE CAST UNTIL ALL SLAB CONCRETE IN THE SPAN HAS BEEN CAST AND HAS REACHED A MINIMUM COMPRESSIVE STRENGTH OF 20.7 MPa.

ALL REINFORCING STEEL IN BARRIER RAILS SHALL BE EPOXY COATED.

VERTICAL GROOVED CONTRACTION JOINTS, 12mm IN DEPTH, SHALL BE TOOLED IN ALL EXPOSED FACES OF THE BARRIER RAIL AND IN ACCORDANCE WITH ARTICLE 825-10(B) OF THE STANDARD SPECIFICATIONS. THE CONTRACTION JOINT SHALL BE LOCATED AT EACH THIRD POINT BETWEEN BARRIER RAIL EXPANSION JOINTS. ONLY ONE CONTRACTION JOINT IS REQUIRED AT MIDPOINT OF BARRIER RAIL SEGMENTS LESS THAN 6.1m IN LENGTH AND NO CONTRACTION JOINTS ARE REQUIRED FOR THOSE SEGMENTS LESS THAN 3.5m IN LENGTH.



END OF RAIL DETAILS

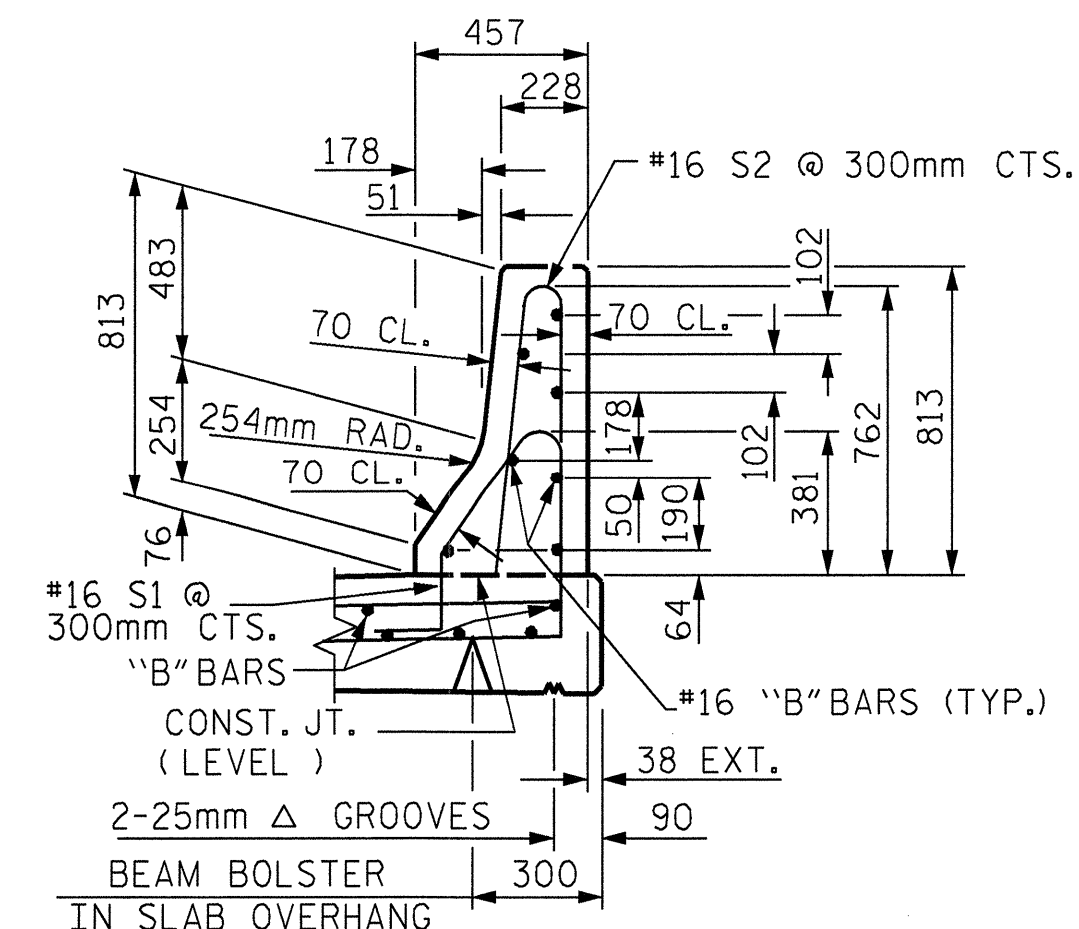


ALL BAR DIMENSIONS ARE OUT TO OUT.

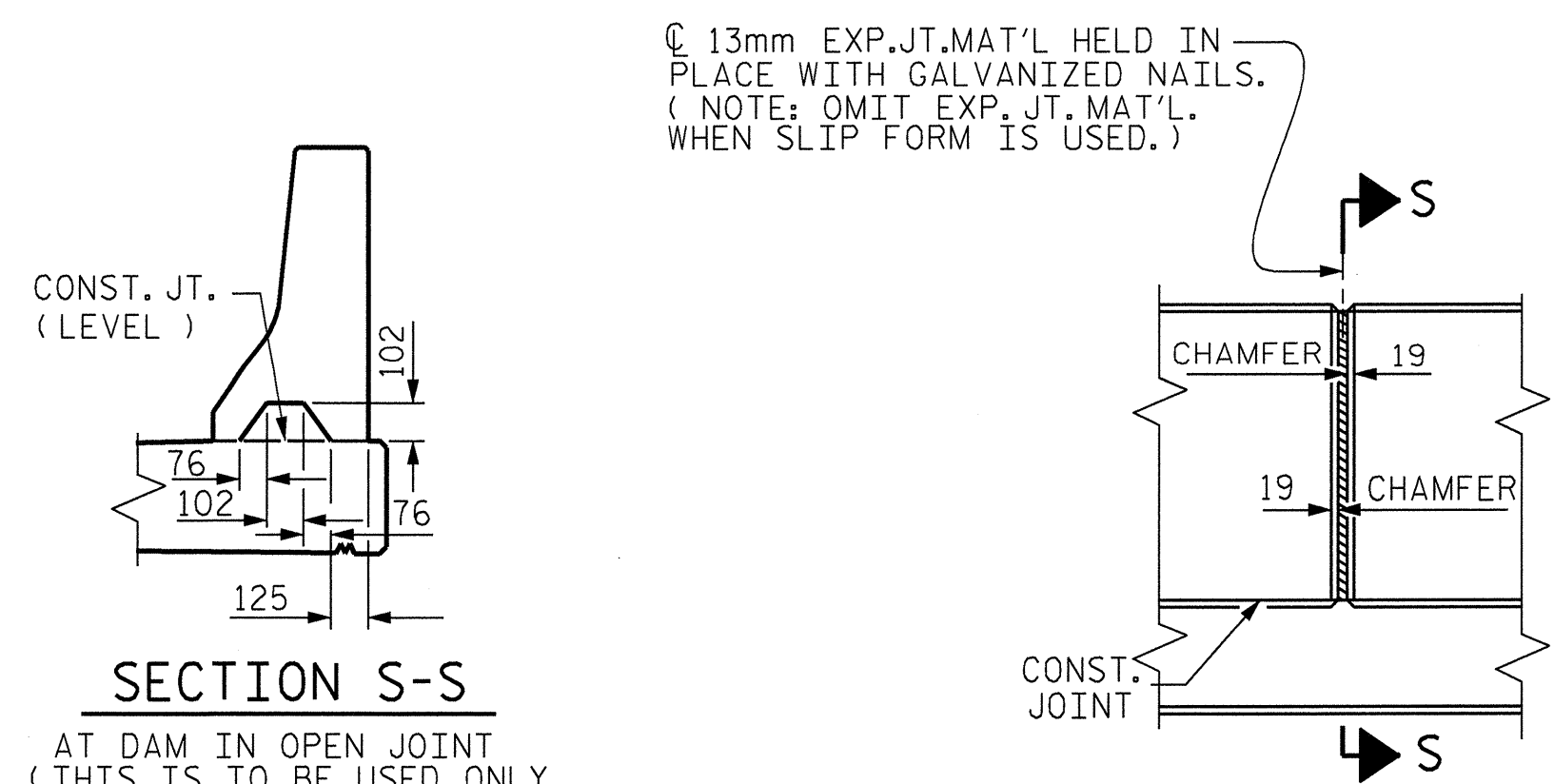
BILL OF MATERIAL
FOR CONCRETE BARRIER RAIL ONLY

BAR	No.	SIZE	TYPE	LENGTH	WEIGHT
S1E	208	#16	1	1440	465
S2E	208	#16	2	1580	510
B1E	56	#16	STR	4420	384
B2E	28	#16	STR	7700	335
				EPOXY COATED REINFORCING STEEL	1,694 kg
				CLASS AA CONCRETE	14.4 cu. m
				CONCRETE BARRIER RAIL	62.3 meters

"E" DENOTES EPOXY COATED REINFORCING STEEL.



SECTION THRU RAIL



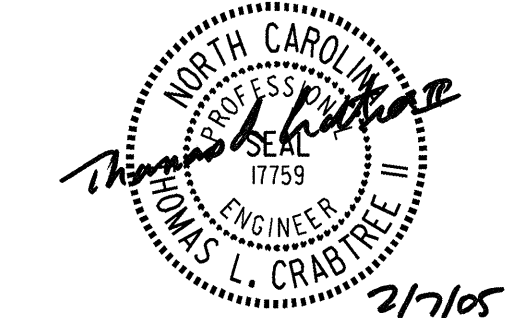
ELEVATION AT EXPANSION JOINTS

BARRIER RAIL DETAILS

ASSEMBLED BY :	LOFTON	DATE :	12/04
CHECKED BY :	CJW	DATE :	12/04
DRAWN BY :	ARB 5/87	REV. 8/16/99	RWW/LES
CHECKED BY :	SJD 9/87	REV. 10/17/00	RWW/LES
		REV. 5/7/03R	RWW/JTE



THIS STANDARD DRAWING REVIEWED AND ADAPTED FOR USE AT THE REFERENCED LOCATION BY THE UNDERSIGNED:



R.N. LTB1-14
STD. No. CBR ISM

PROJECT NO. R-2552C
JOHNSTON COUNTY
STATION: 121+97.157 -L2LT-

STATE OF NORTH CAROLINA
DEPARTMENT OF TRANSPORTATION
RALEIGH
STANDARD
CONCRETE BARRIER RAIL
(LEFT BRIDGE)

REVISIONS				SHEET NO.	
NO.	BY:	DATE:	NO.	BY:	DATE:
1			3		
2			4		

TOTAL SHEETS: 5-279
4(S)