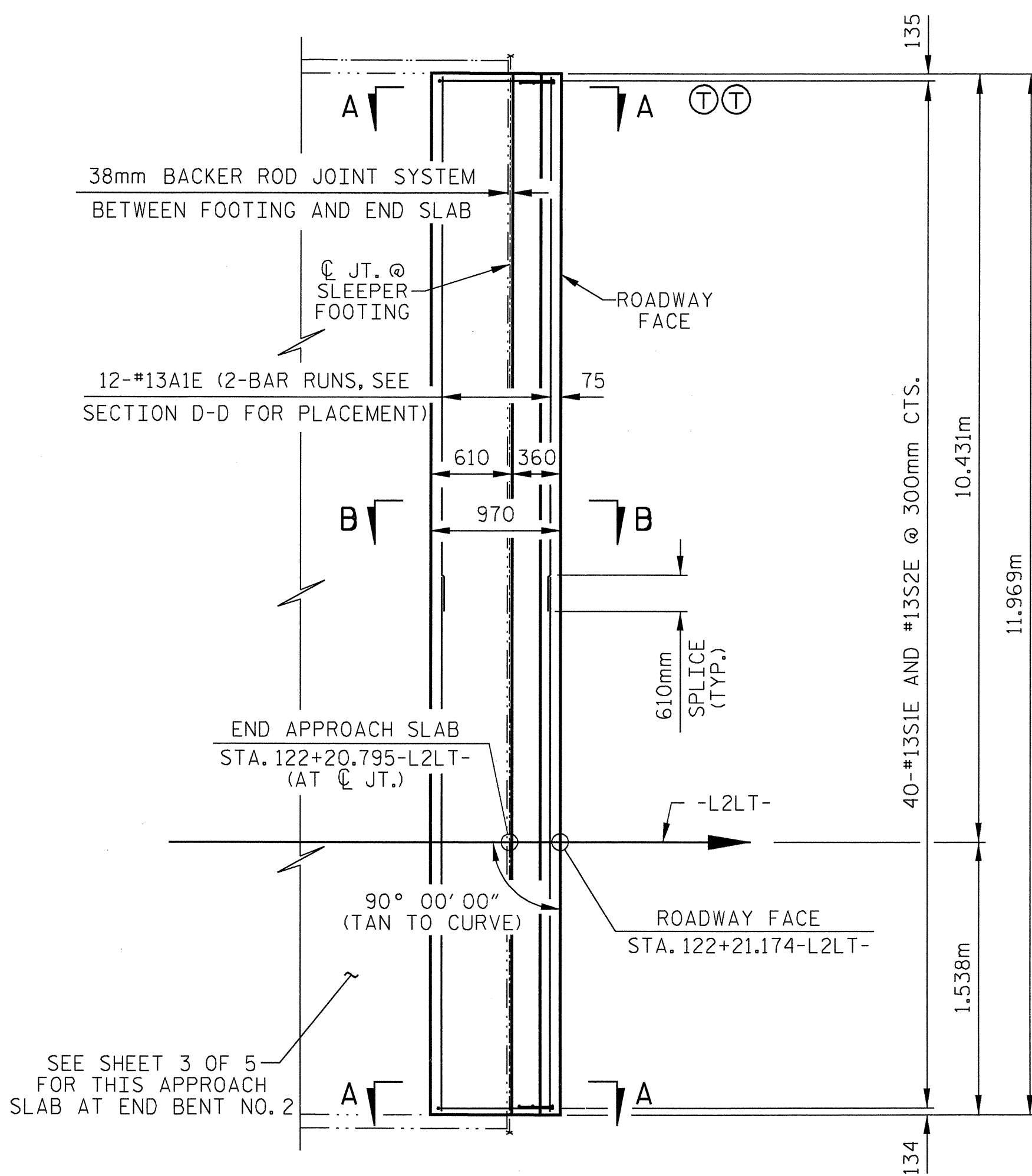
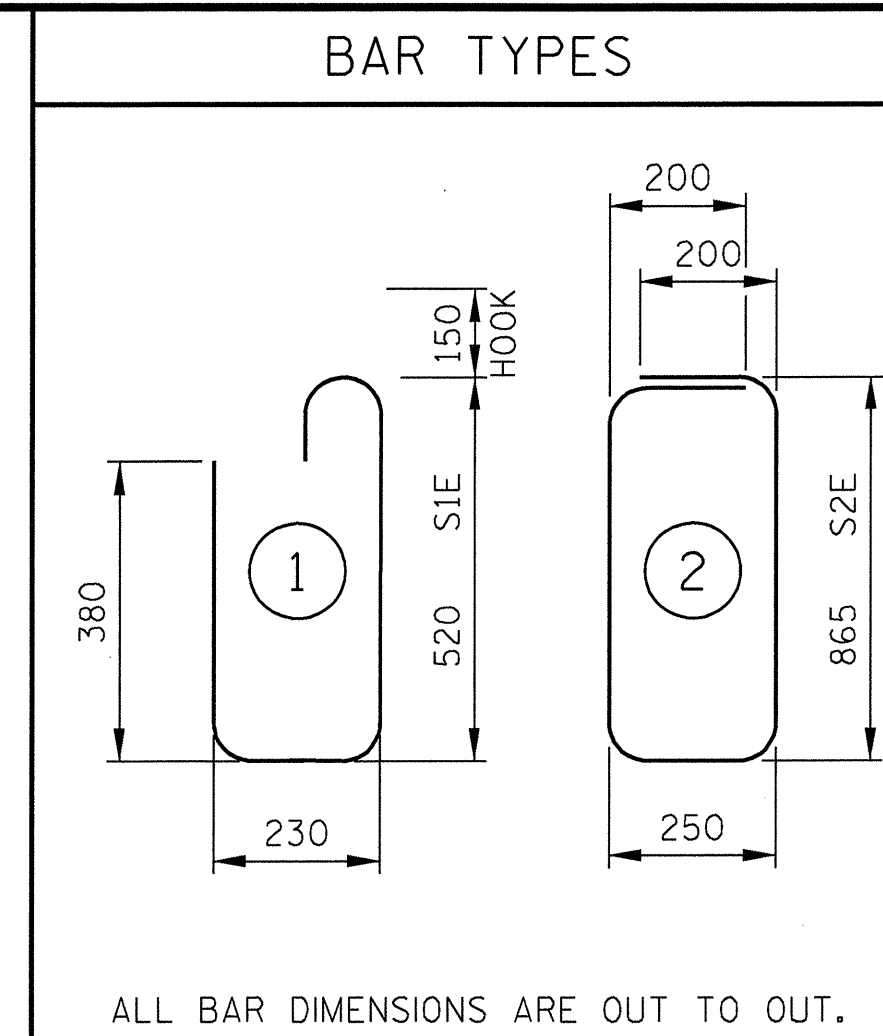


AT APPROACH SLAB END BENT NO. 1



AT APPROACH SLAB END BENT NO. 2

PLAN OF SLEEPER FOOTINGS



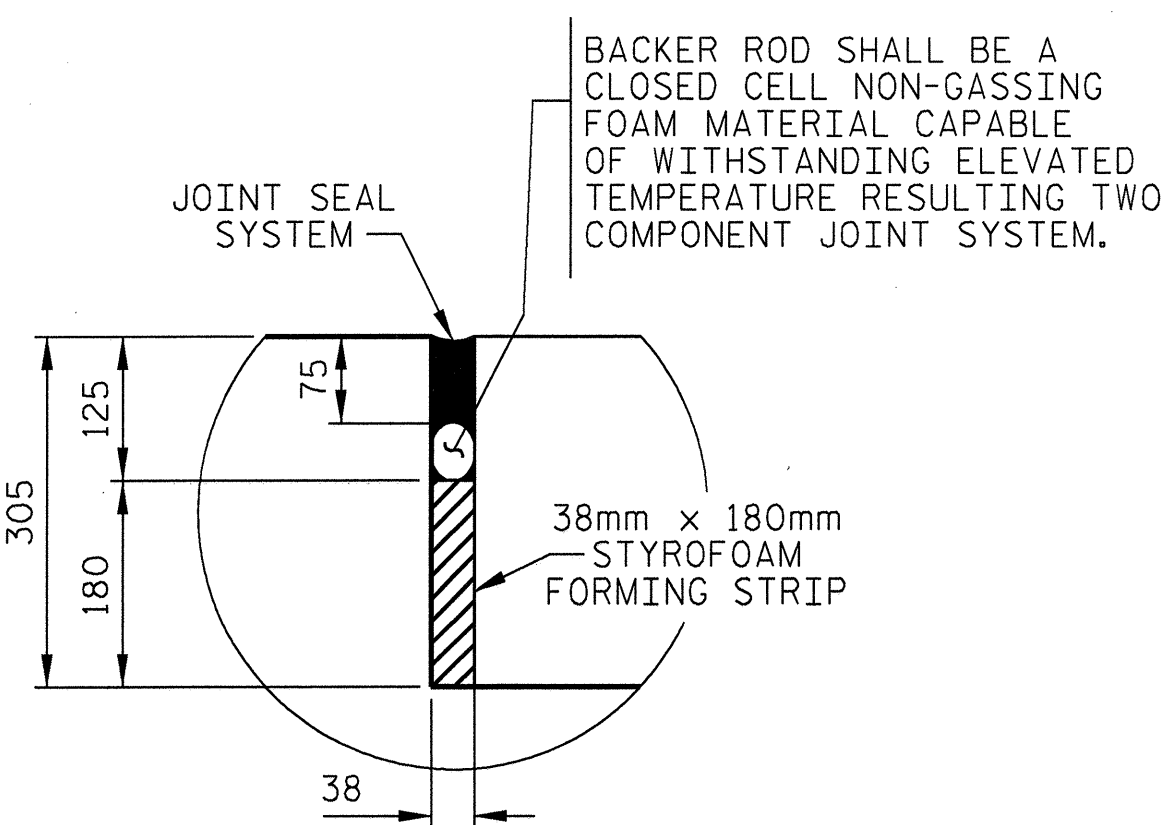
ALL BAR DIMENSIONS ARE OUT TO OUT.

NOTES

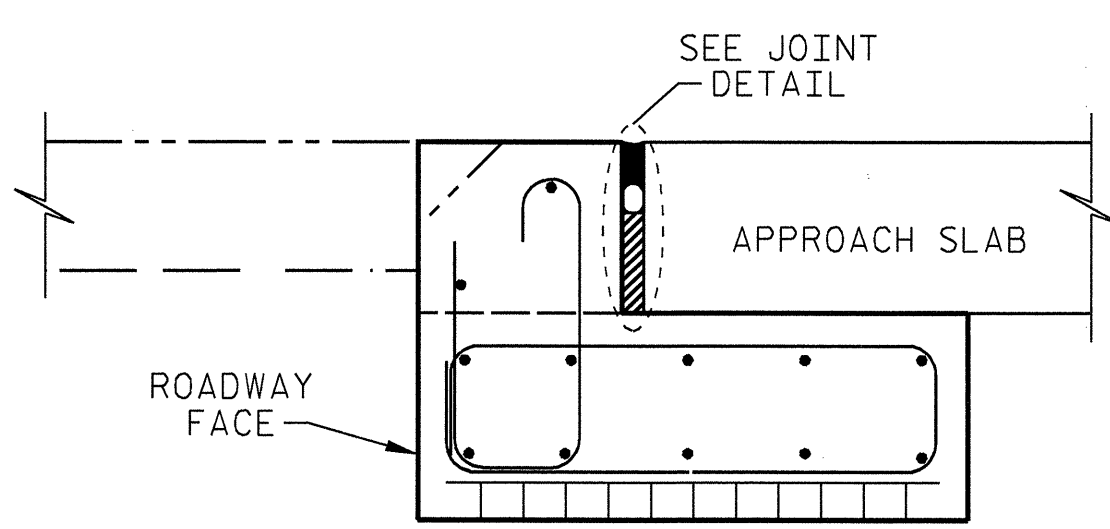
TEMPORARY BERM AND SLOPE DRAINS REQUIRED AT THIS LOCATION. FOR DETAILS SEE SHEET 1 OF 5.
THE COST OF THE SLEEPER FOOTINGS AT THE APPROACH SLAB SHALL BE INCLUDED IN THE LUMP SUM CONTRACT PRICE BID FOR BRIDGE APPROACH SLABS.

REINFORCING BAR SCHEDULE					
SLEEPER FOOTING @ END BENT NO. 1					
BAR No.	SIZE	TYPE	LENGTH	WEIGHT	
A1E	24	13	STR	6240	149
S1E	40	13	1	1280	51
S2E	40	13	2	2380	95
EPOXY COATED REINFORCING STEEL					295 kg
CLASS "AA" CONCRETE SLEEPER FOOTING					5.4 cu. m
SLEEPER FOOTING @ END BENT NO. 2					
BAR No.	SIZE	TYPE	LENGTH	WEIGHT	
A1E	24	13	STR	6240	149
S1E	40	13	1	1280	51
S2E	40	13	2	2380	95
EPOXY COATED REINFORCING STEEL					295 kg
CLASS "AA" CONCRETE SLEEPER FOOTING					5.4 cu. m

"E" DENOTES EPOXY COATED REINFORCING STEEL.

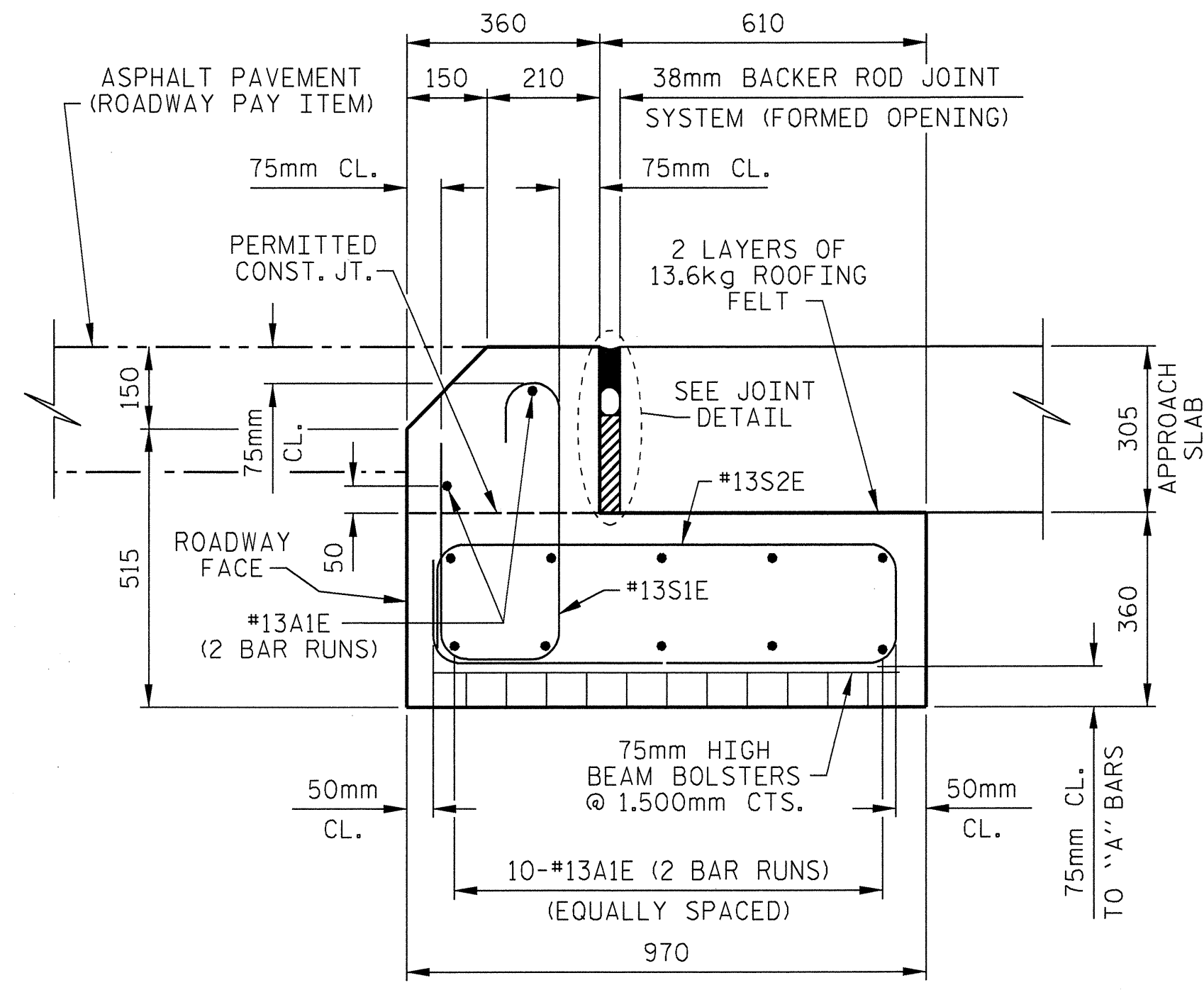


JOINT DETAIL



SECTION A-A

FOR ADDITIONAL INFORMATION, SEE SECTION B-B.



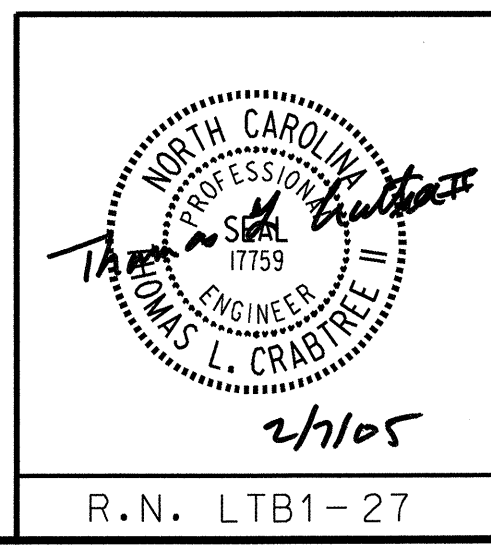
SECTION B-B



PROJECT NO. R-2552C
JOHNSTON COUNTY
STATION: 121+97.157 -L2LT-

SHEET 4 OF 5

STATE OF NORTH CAROLINA
DEPARTMENT OF TRANSPORTATION
RALEIGH
SUPERSTRUCTURE
BRIDGE APPROACH SLAB
FOR FLEXIBLE PAVEMENT
WITH BARRIER RAIL
(LEFT BRIDGE)



REVISIONS				SHEET NO.	
NO.	BY:	DATE:	NO.	BY:	DATE:
1			3		
2			4		
				TOTAL SHEETS	431

DRAWN BY: LOFTON DATE: 12/04
CHECKED BY: CJW DATE: 01/05
APPROVED BY: DATE: