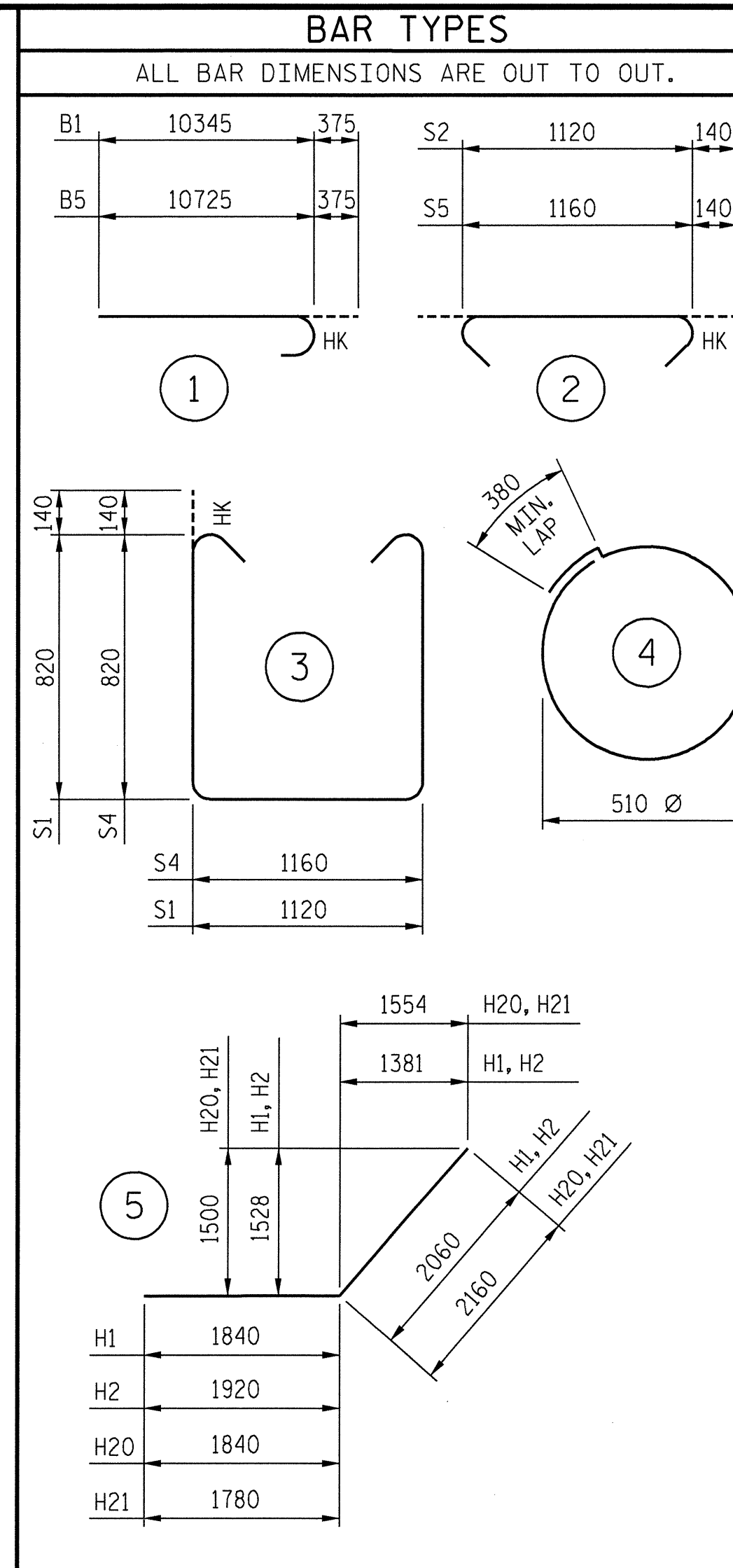


SECTION A-A



BILL OF MATERIAL					
END BENT NO. 2					
BAR	No.	SIZE	TYPE	LENGTH	WEIGHT
B1	10	29		10720	542
B2	8	19	STR	9980	178
B3	16	13	STR	1120	18
B4	12	13	STR	6760	81
B5	10	29		11100	562
H1	1	22		3900	12
H2	1	19		3980	9
H3	5	19	STR	3540	40
H4	5	19	STR	3620	40
H5	1	22	STR	2040	6
H6	1	22	STR	2260	7
H7	1	22	STR	2480	8
H8	1	22	STR	2700	8
H9	1	22	STR	2620	8
H10	1	22	STR	3100	9
H11	1	22	STR	3300	10
H12	1	19	STR	2120	5
H13	1	19	STR	2340	5
H14	1	19	STR	2560	6
H15	1	19	STR	2780	6
H16	1	19	STR	3000	7
H17	1	19	STR	3180	7
H18	1	19	STR	3380	8
H19	2	19	STR	1320	6
H20	1	22		4000	12
H21	1	19		3940	9
H22	5	19	STR	3720	42
H23	5	19	STR	3660	41
H24	1	22	STR	2080	6
H25	1	22	STR	2320	7
S1	104	16		3040	491
S2	104	16		1400	226
S3	98	13		1980	193
S4	2	16		3080	10
S5	2	16		1440	4
V1	133	19	STR	2280	678
V2	30	16	STR	1740	81
V3	17	16	STR	1960	52
V4	2	16	STR	1040	3
V5	2	16	STR	1360	4
V6	2	16	STR	1680	5
V7	17	16	STR	1900	50
V8	2	16	STR	1780	6
V9	2	16	STR	1540	5
V10	2	16	STR	1300	4
V11	2	16	STR	1040	3

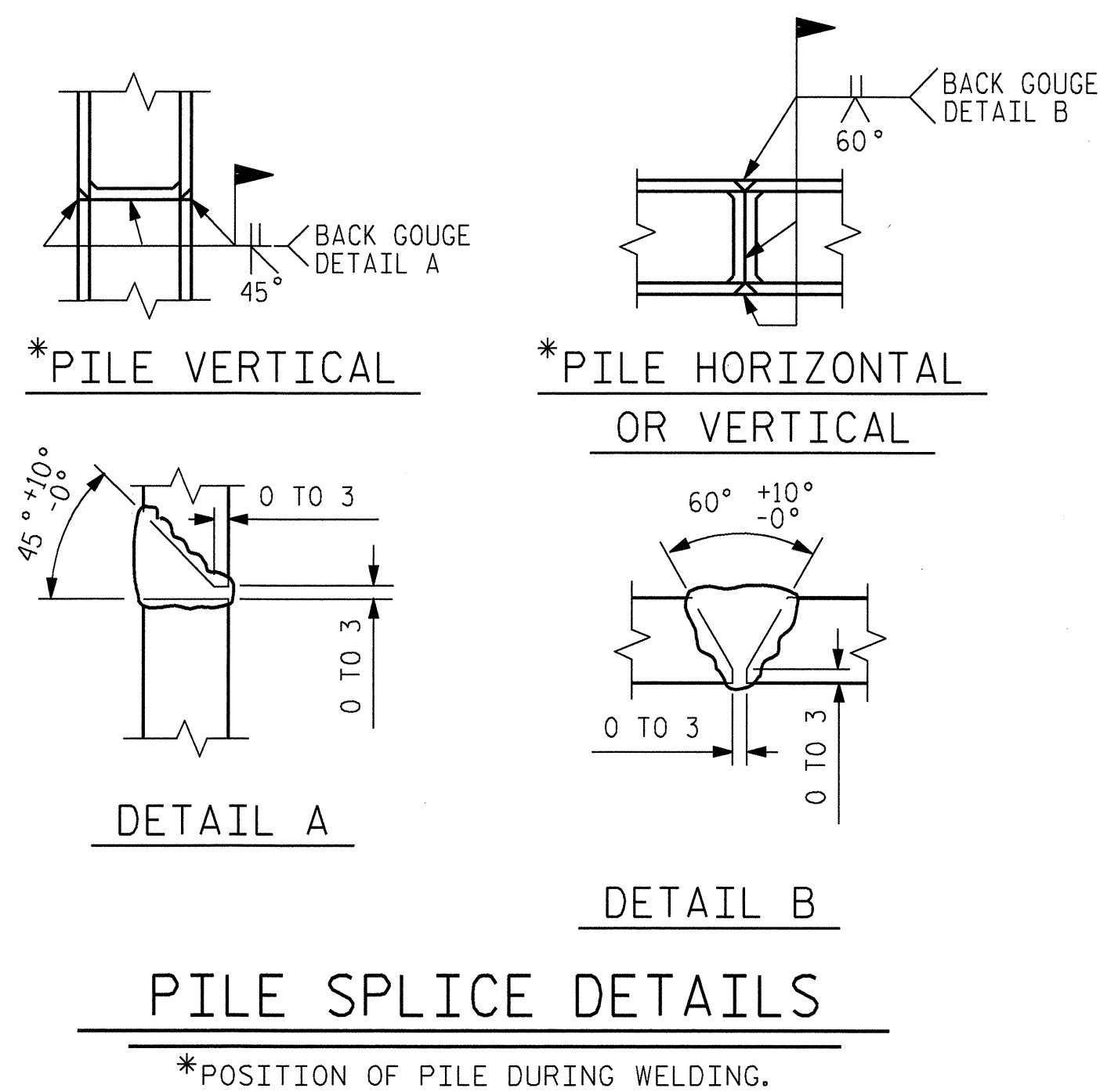
BILL OF MATERIAL					
END BENT NO. 2					
BAR	No.	SIZE	TYPE	LENGTH	WEIGHT
H26	1	22	STR	2600	8
H27	1	22	STR	2780	8
H28	1	22	STR	3020	9
H29	1	22	STR	3240	10
H30	1	22	STR	3480	11
H31	1	19	STR	2000	4
H32	1	19	STR	2240	5
H33	1	19	STR	2520	6
H34	1	19	STR	2700	6
H35	1	19	STR	2940	7
H36	1	19	STR	3160	7
H37	1	19	STR	3400	8
H38	2	19	STR	1320	6
S1	104	16		3040	491
S2	104	16		1400	226
S3	98	13		1980	193
S4	2	16		3080	10
S5	2	16		1440	4
V1	133	19	STR	2280	678
V2	30	16	STR	1740	81
V3	17	16	STR	1960	52
V4	2	16	STR	1040	3
V5	2	16	STR	1360	4
V6	2	16	STR	1680	5
V7	17	16	STR	1900	50
V8	2	16	STR	1780	6
V9	2	16	STR	1540	5
V10	2	16	STR	1300	4
V11	2	16	STR	1040	3

REINFORCING STEEL 3,615 kg

CLASS "A" CONCRETE BREAKDOWN
POUR #1 (CAP AND LOWER WINGS) 22.5 CU. M

TOTAL CLASS "A" CONCRETE 22.5 CU. M

HP 310x79 STEEL PILES
TOTAL NO. = 14 LIN. METERS = 308

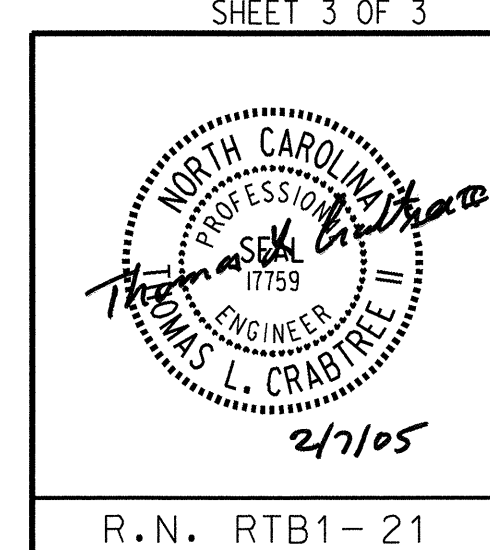


*POSITION OF PILE DURING WELDING.

PILE	ELEVATION
P1	93.987
P2	94.014
P3	94.040
P4	94.066
P5	94.093
P6	94.119
P7	94.146
P8	94.172
P9	94.198
P10	94.225
P11	94.251
P12	94.278
P13	94.304
P14	94.331



PROJECT NO. R-2552C
JOHNSTON COUNTY
STATION: 122+14.832 -L2RT-



REVISIONS					SHEET NO.
NO.	BY:	DATE:	NO.	DATE:	TOTAL SHEETS
1			3		5-314
2			4		431

DRAWN BY: MTB DATE: 11/04
CHECKED BY: TLC DATE: 12/04
APPROVED BY: DATE:

R.N. RTB1-21