

REINFORCING BAR SCHEDULE					
SLEEPER FOOTING @ END BENT NO. 1					
BAR No.	SIZE	TYPE	LENGTH	WEIGHT	
A1E	24	13	STR	8020	191
S1E	52	13	1	1280	66
S2E	52	13	2	2380	123
EXPOXY COATED REINFORCING STEEL 380 kg					
CLASS "AA" CONCRETE SLEEPER FOOTING 7.0 cu. m.					
SLEEPER FOOTING @ END BENT NO. 2					
BAR No.	SIZE	TYPE	LENGTH	WEIGHT	
A1E	24	13	STR	8060	192
S1E	52	13	1	1280	66
S2E	52	13	2	2380	123
EXPOXY COATED REINFORCING STEEL 381 kg					
CLASS "AA" CONCRETE SLEEPER FOOTING 7.0 cu. m.					

NOTES

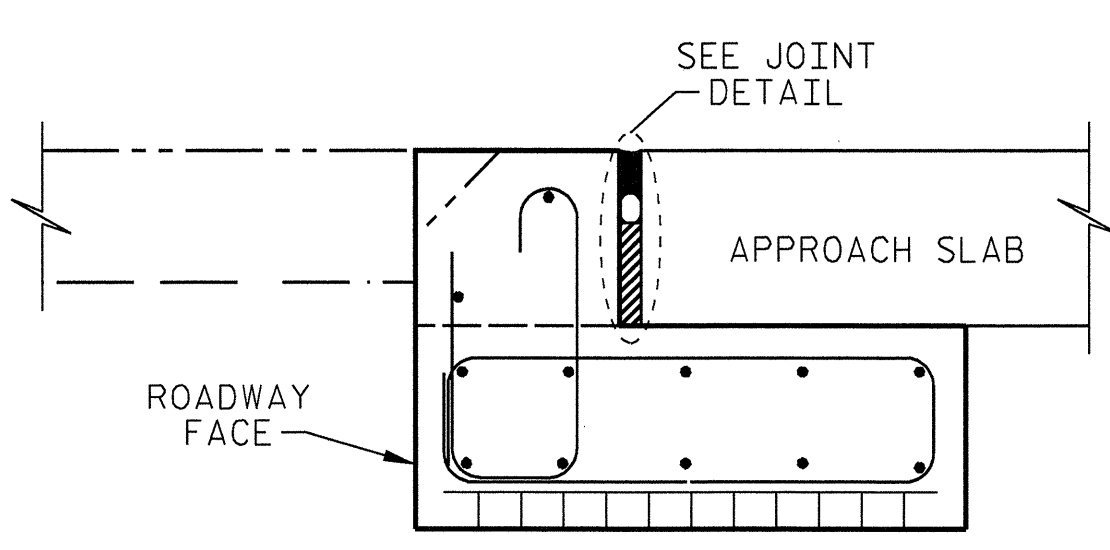
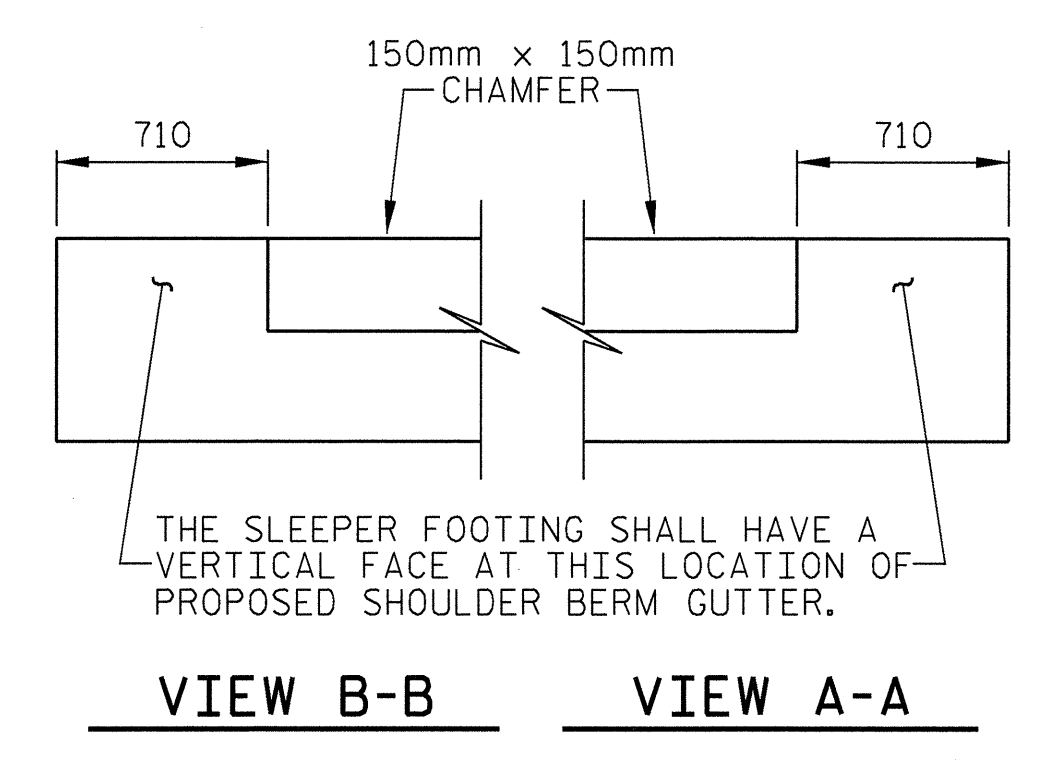
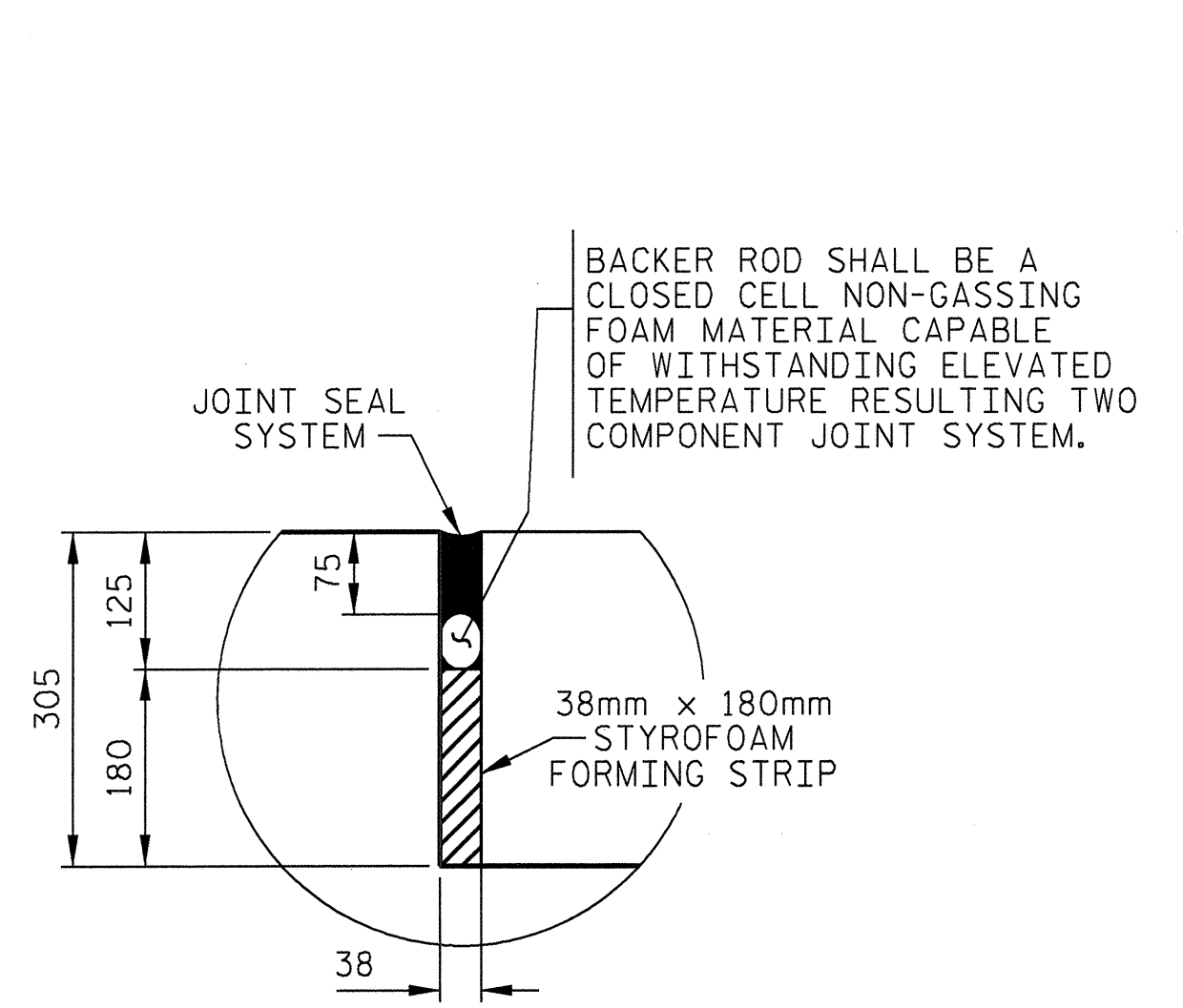
ⓉⓉ TEMPORARY BERM AND SLOPE DRAINS REQUIRED AT THIS LOCATION. FOR DETAILS SEE SHEET 1 OF 5.

THE COST OF THE SLEEPER FOOTINGS AT THE APPROACH SLAB SHALL BE INCLUDED IN THE LUMP SUM CONTRACT PRICE BID FOR BRIDGE APPROACH SLABS.

AT APPROACH SLAB END BENT NO. 1

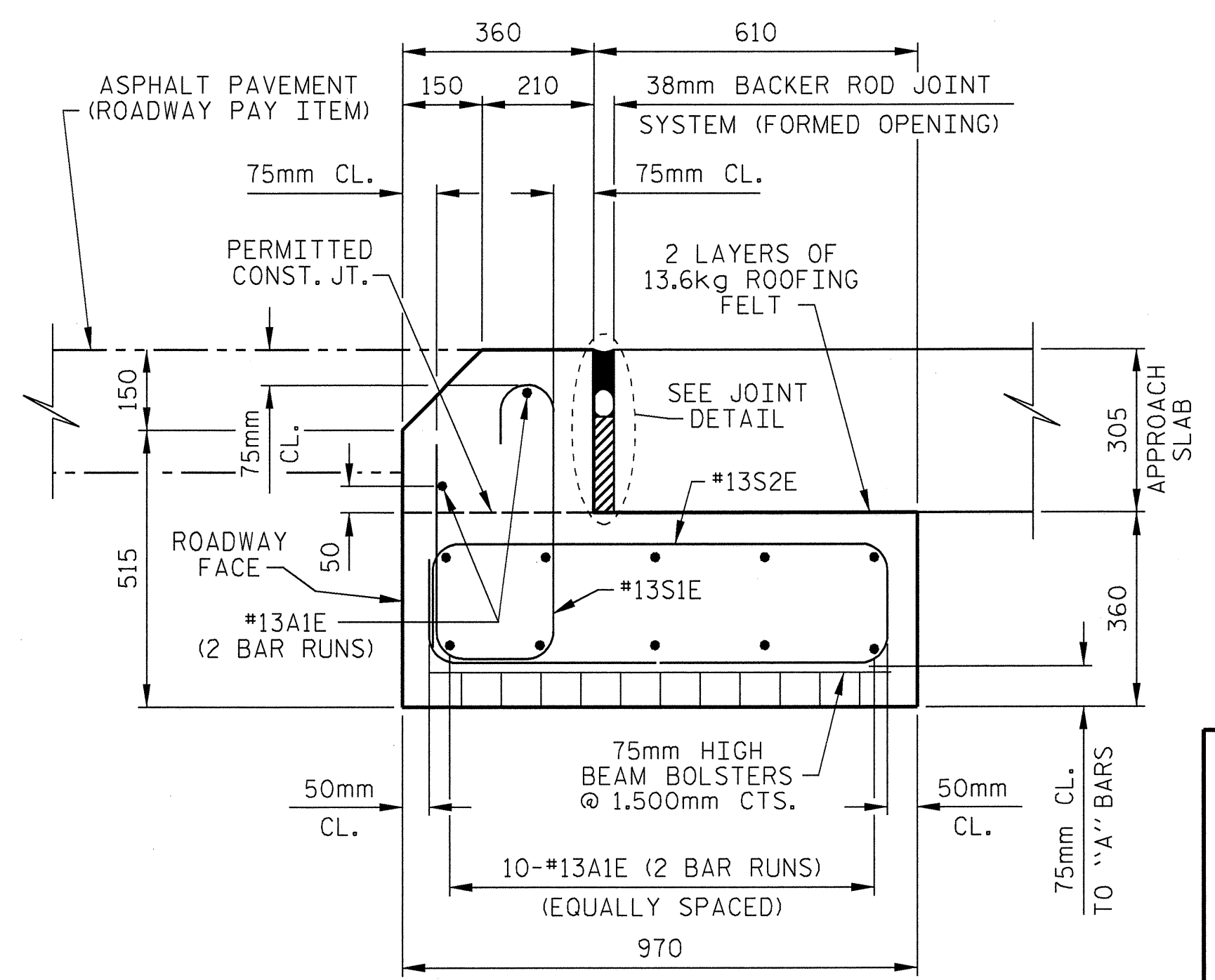
AT APPROACH SLAB END BENT NO. 2

PLAN OF SLEEPER FOOTINGS



SECTION C-C

FOR ADDITIONAL INFORMATION, SEE SECTION D-D.

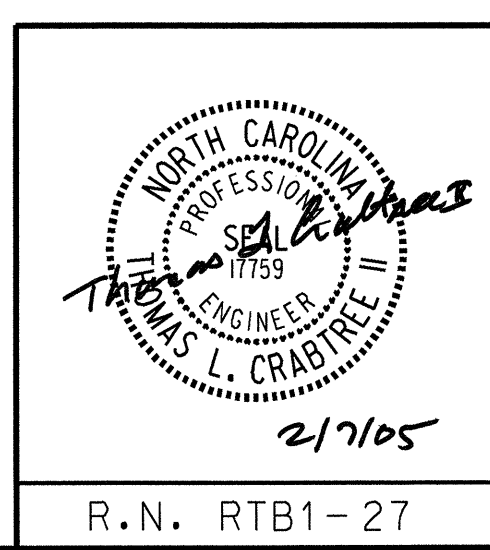


SECTION D-D



PROJECT NO. R-2552C
 JOHNSTON COUNTY
 STATION: 122+14.832 -L2RT-
 SHEET 4 OF 5

STATE OF NORTH CAROLINA
 DEPARTMENT OF TRANSPORTATION
 RALEIGH
 SUPERSTRUCTURE
 BRIDGE APPROACH SLAB FOR FLEXIBLE PAVEMENT WITH BARRIER RAIL (RIGHT BRIDGE)



REVISIONS						SHEET NO.
NO.	BY:	DATE:	NO.	BY:	DATE:	TOTAL SHEETS
1			3			5-320
2			4			431

DRAWN BY: LOFTON DATE: 12/04
 CHECKED BY: CJW DATE: 01/05
 APPROVED BY: DATE:

R.N. RTB1-27