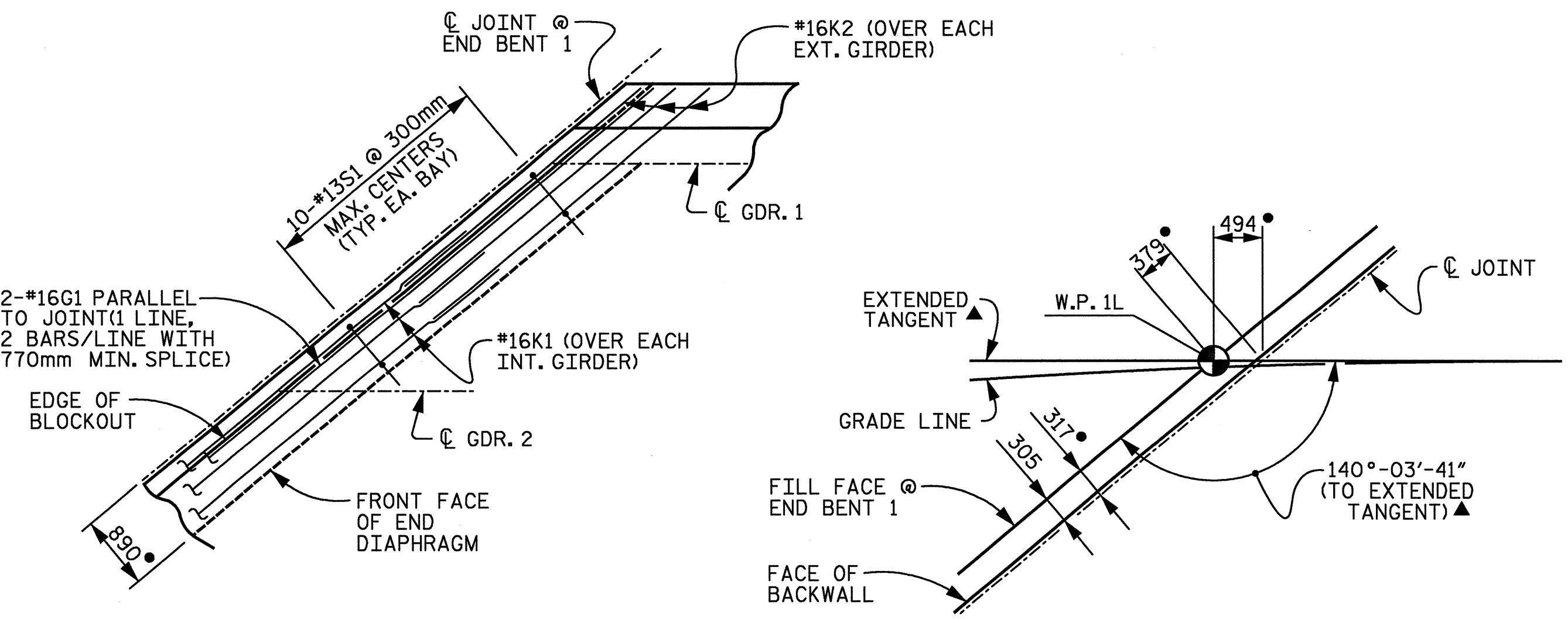
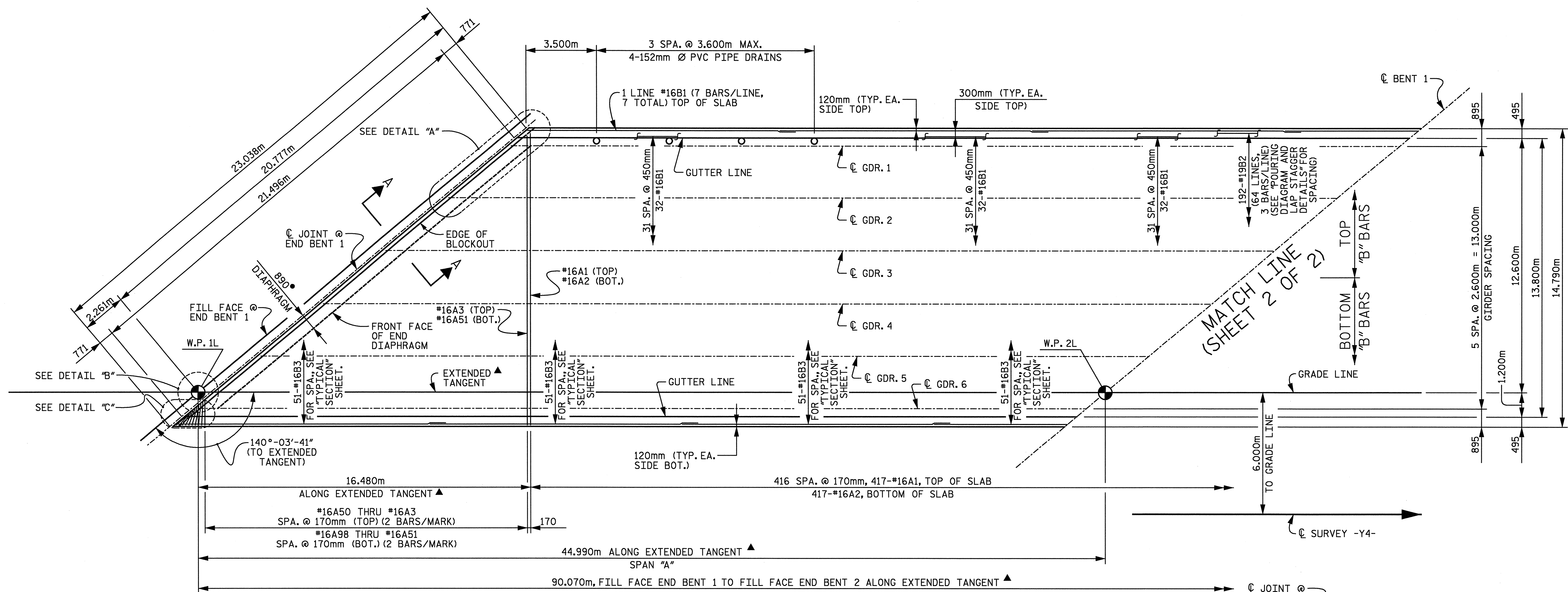


05:31z22 PM

n:\p\013109-100\ustation\struct\final\3109-100_span_a.dgn

02/17/2005

david.lowe@rwa.com

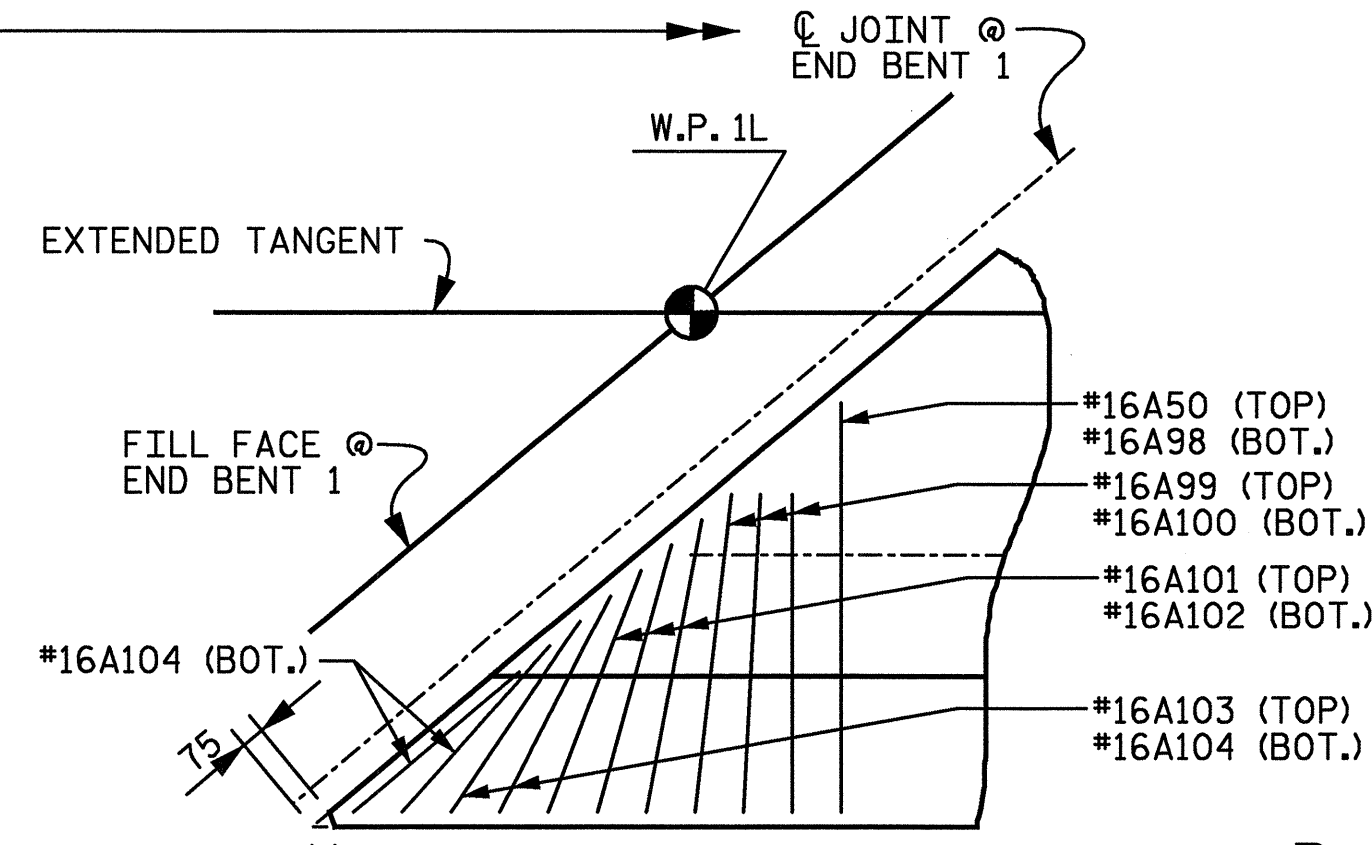


SPAN "A"

- AT 16° C.
- ▲ FOR EXTENDED TANGENT, SEE "GENERAL DRAWING EXTENDED TANGENT LAYOUT" SHEET.

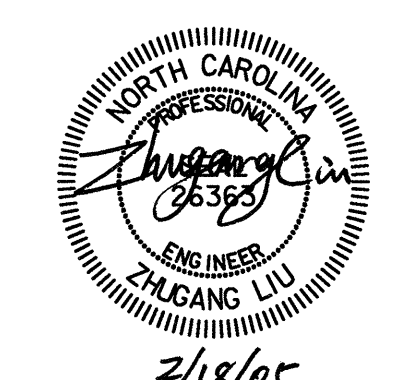
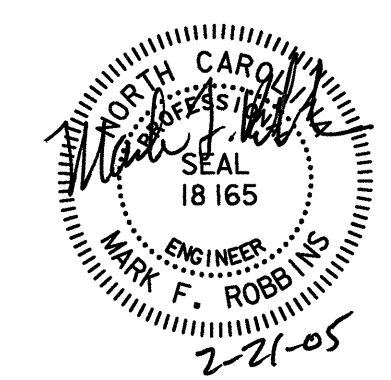
NOTES :

- FOR CONCRETE BARRIER RAIL DIMENSIONS, REINFORCEMENT AND JOINT SPACING, SEE "CONCRETE BARRIER RAIL" SHEETS.
- FOR POURING SEQUENCE, & TRANSVERSE CONST. JOINT IN DECK SLAB, SEE "POURING DIAGRAM AND LAP STAGGER DETAILS" SHEET.
- FOR SECTION A-A, SEE "TYPICAL SECTION" SHEET.
- FOR TOP "B" BAR REINFORCING LAYOUT, SEE "POURING DIAGRAM AND LAP STAGGER DETAILS" SHEET.
- FOR BOTTOM "B" BAR SPACING, SEE "TYPICAL SECTION" SHEET.
- "A" BARS TO BE PLACED PERPENDICULAR TO GRADE LINE OR EXTENDED TANGENT.
- DIMENSIONS TO DECK DRAINS ARE MEASURED ALONG LEFT EDGE OF SLAB.
- REINFORCING MAY BE SHIFTED TO CLEAR DECK DRAINS.
- ARC OFFSETS ARE NEGLIGIBLE.



DETAIL "C"

(END BENT 1 SHOWN, END BENT 2 SIMILAR)



RALPH WHITEHEAD ASSOCIATES, INC.
 CONSULTING ENGINEERS
 P.O. BOX 35624 CHARLOTTE, N.C. 28235

DRAWN BY LGH DATE 8-04 DWG. NO. D-1749.06
 CHECKED BY TVR DATE 8-04

PROJECT No. R-2552C
 JOHNSTON COUNTY
 STATION POT 148+08.446 -L2-
 POT 23+96.446 -Y4-

SHEET 1 OF 2

NO.	BY	DATE	REVISIONS
1	LGH	8-04	DATE
2	TVR	8-04	DATE

STATE OF NORTH CAROLINA
 DEPARTMENT OF TRANSPORTATION
 RALEIGH

**PLAN OF SPANS
 SPAN "A"**

-LEFT LANE-

SHEET NO. 5-327
 TOTAL SHEETS 431