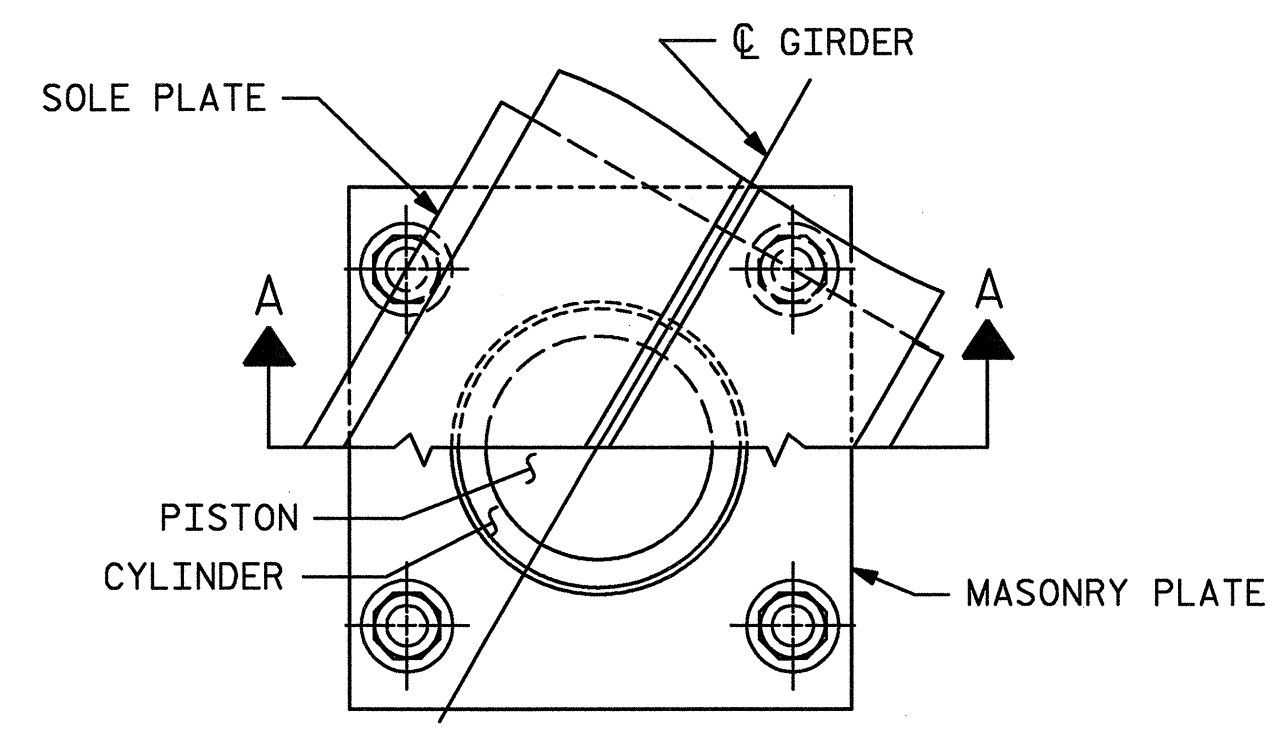
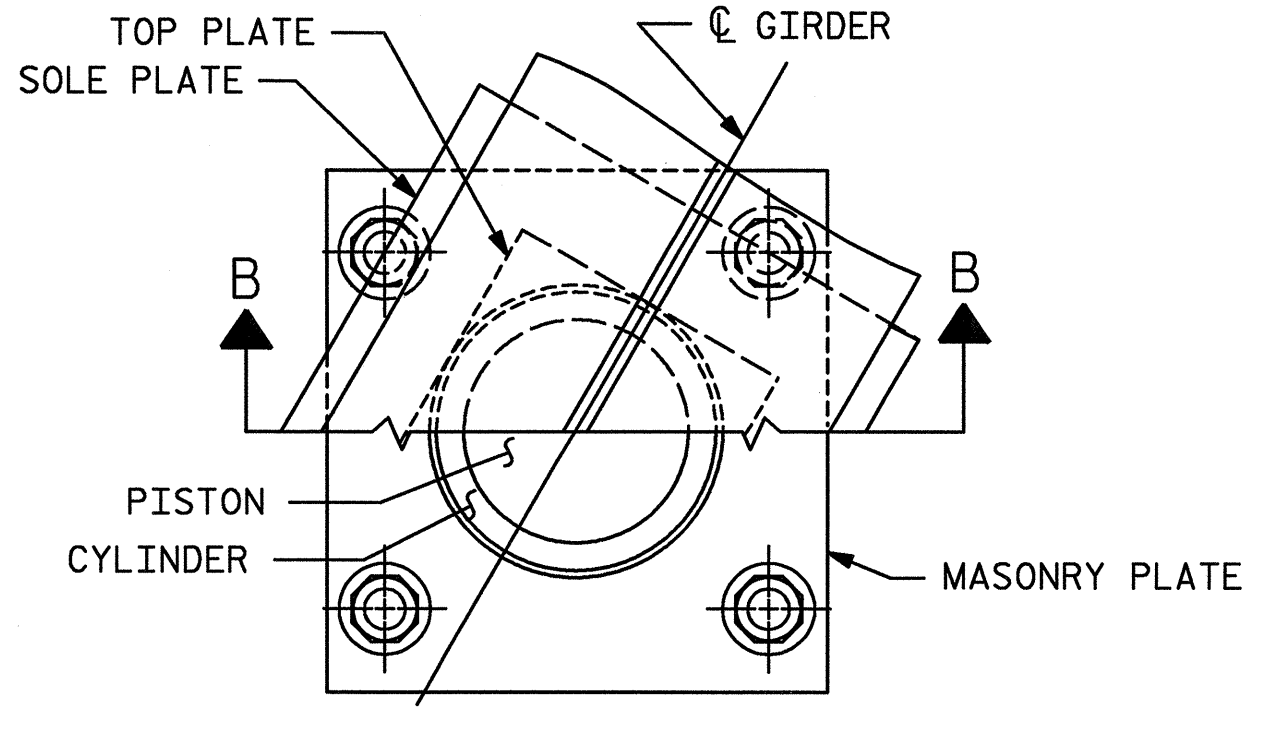


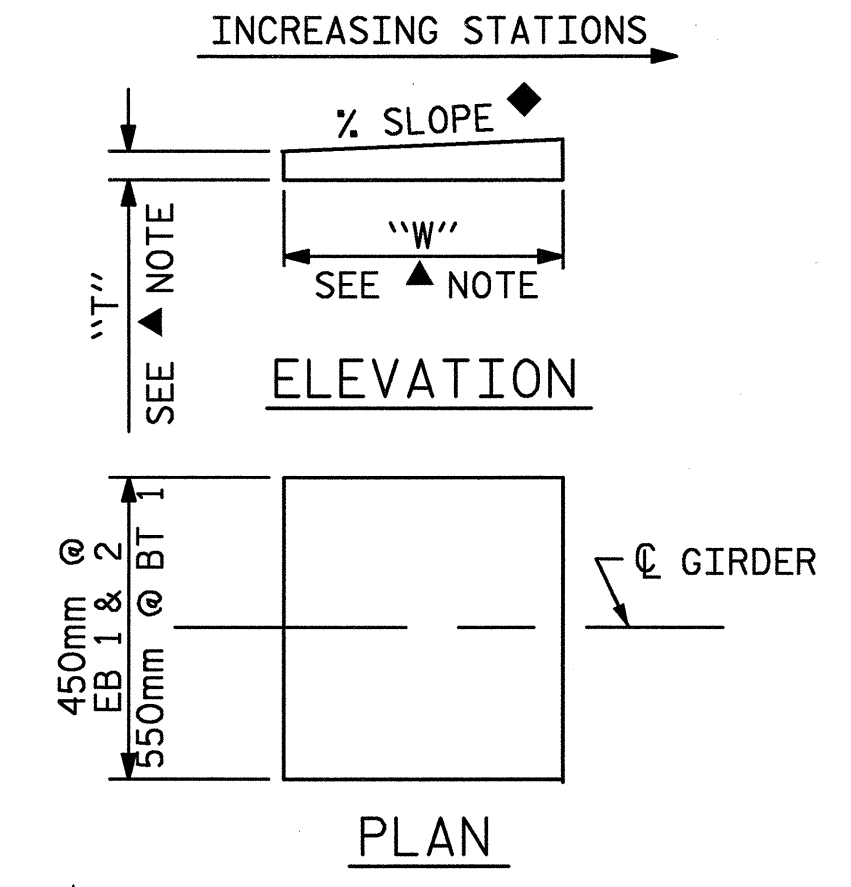
02/17/2005 05:34:48 PM n:\proj\3109-100\station\stFuct\Final\3109-100.pot\_ldgn



CUT-AWAY PLAN



CUT-AWAY PLAN



SOLE PLATE DETAILS

▲ NOTE: DIMENSIONS "W" AND "T" ARE TO BE DETERMINED BY THE MANUFACTURER.

- ◆ -1.4% @ EB 1
- ◆ -1.8% @ BT 1
- ◆ -2.2% @ EB 2

**NOTES**

FOR POT BEARINGS, SEE SPECIAL PROVISIONS.

AT ALL POINTS OF SUPPORT IN SPANS A & B, NUTS FOR ANCHOR BOLTS SHALL BE TIGHTENED FINGER TIGHT AND GIVEN AN ADDITIONAL 1/4 TURN. THE THREAD OF THE NUT AND BOLT SHALL THEN BE BURRED WITH A SHARP POINTED TOOL.

WHEN WELDING THE SOLE PLATE TO THE GIRDER, USE TEMPERATURE INDICATING WAX PENS, OR OTHER SUITABLE MEANS, TO ENSURE THAT THE TEMPERATURE OF THE BEARING DOES NOT EXCEED 121°C. TEMPERATURES ABOVE THIS MAY DAMAGE THE TFE OR ELASTOMER.

AFTER BEARING ASSEMBLY IS IN PLACE AND ANCHOR BOLTS HAVE BEEN FINALLY POSITIONED. THEY SHALL BE GROUTED IN PLACE AS SHOWN.

THE CLOSURE PLATE, GROUT PIPE AND STANDARD PIPE FOR THIS ASSEMBLY NEED NOT BE GALVANIZED.

SOLE PLATES SHOULD BE WELDED TO BEAM FLANGES AND ANCHOR BOLTS SHOULD BE GROUTED BEFORE FALSEWORK IS PLACED.

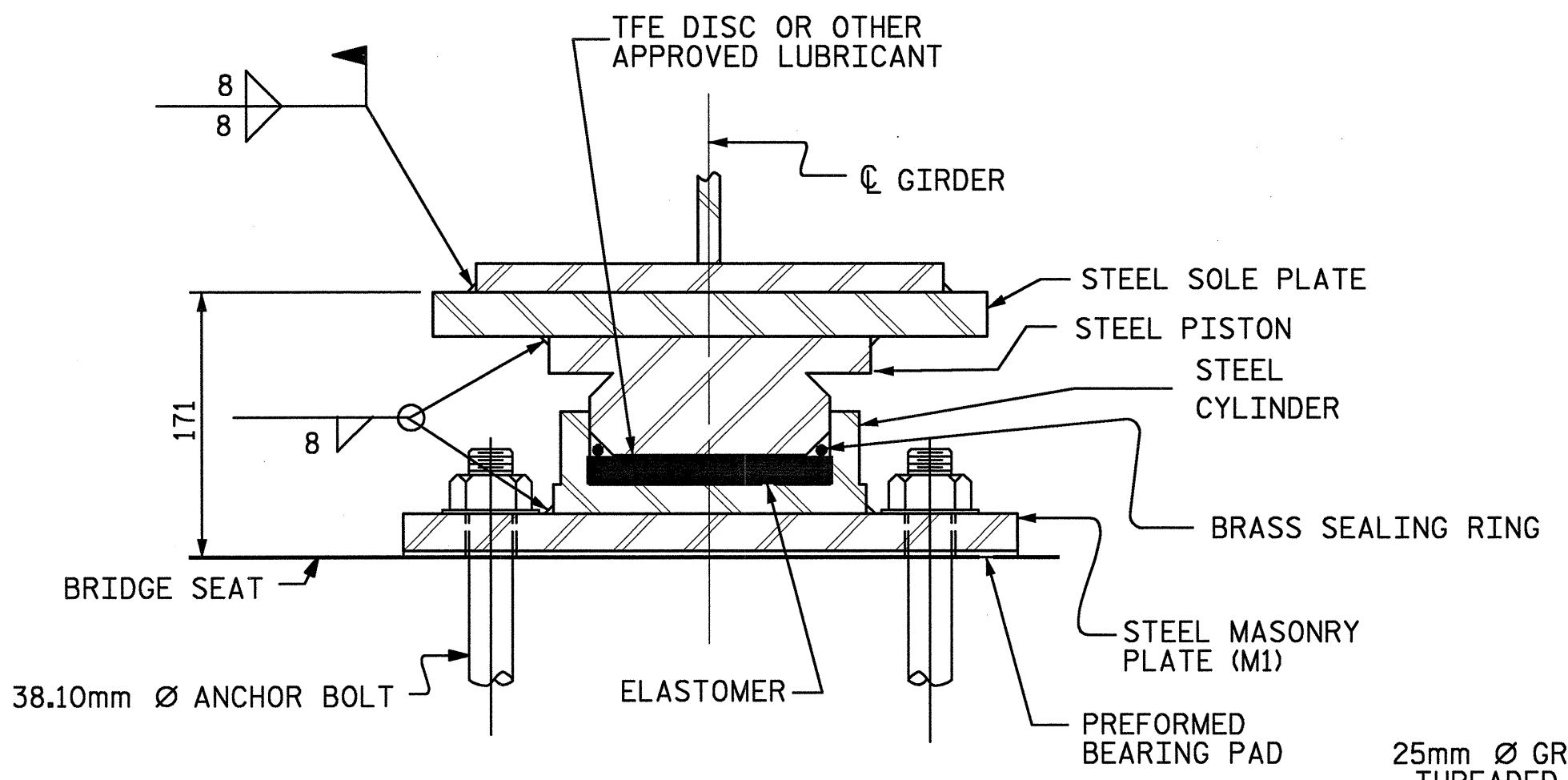
ALL SURFACES OF BEARING PLATES SHALL BE SMOOTH AND STRAIGHT.

FOR THERMAL SPRAYED COATINGS (METALLIZATION), SEE SPECIAL PROVISIONS.

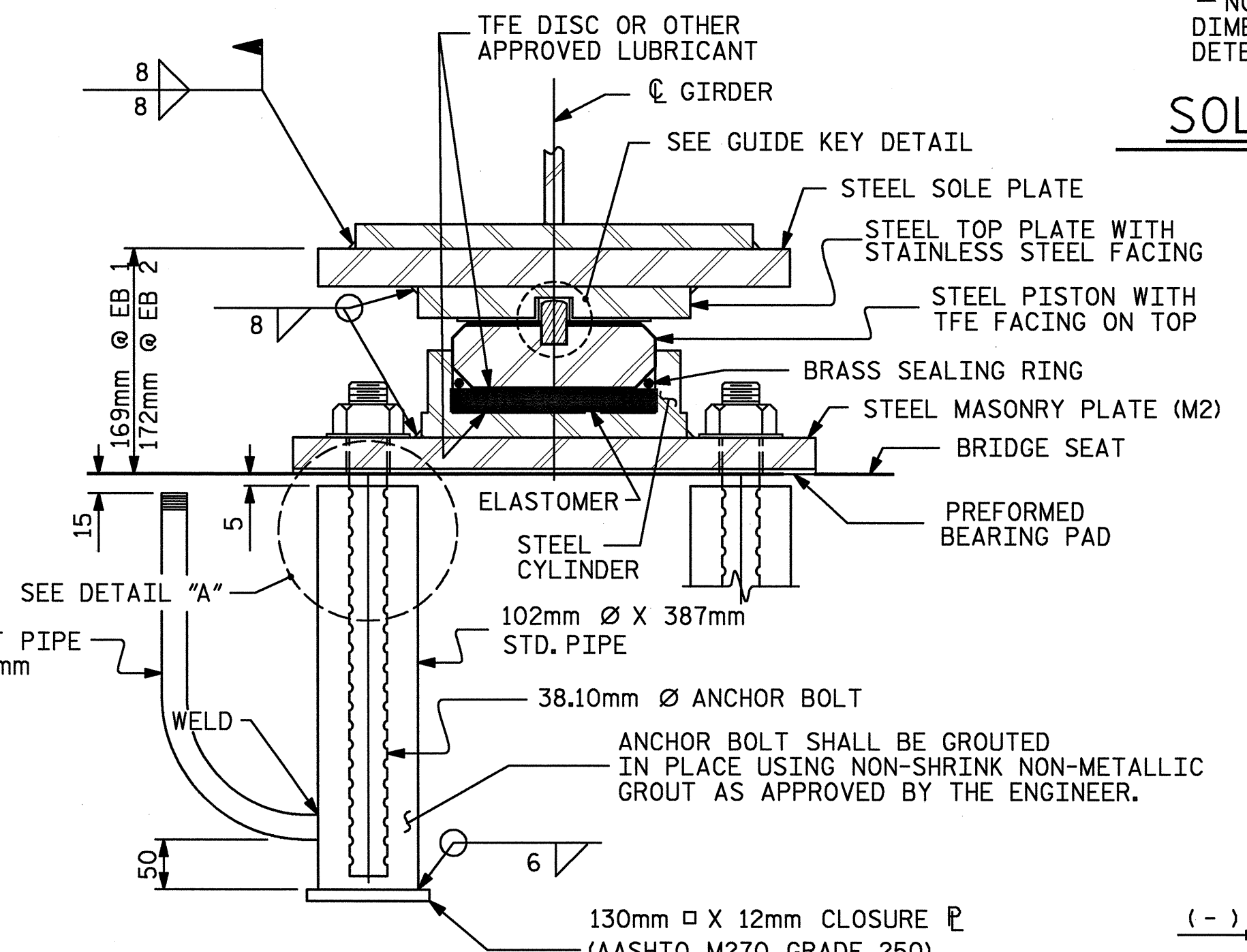
THE CONTRACTOR MAY SUBSTITUTE DISC BEARINGS FOR THE POT BEARINGS SHOWN. FOR OPTIONAL DISC BEARINGS, SEE SPECIAL PROVISIONS.

FOR PROJECTION OF ANCHOR BOLTS, SEE END BENTS AND BENT SHEETS.

THE CONTRACTOR SHALL ADJUST THE BUILD-UPS AS NECESSARY TO INCORPORATE A MAXIMUM PERMISSIBLE VARIATION IN POT BEARING DEPTH OF 13mm. SEE SPECIAL PROVISIONS FOR POT BEARINGS.



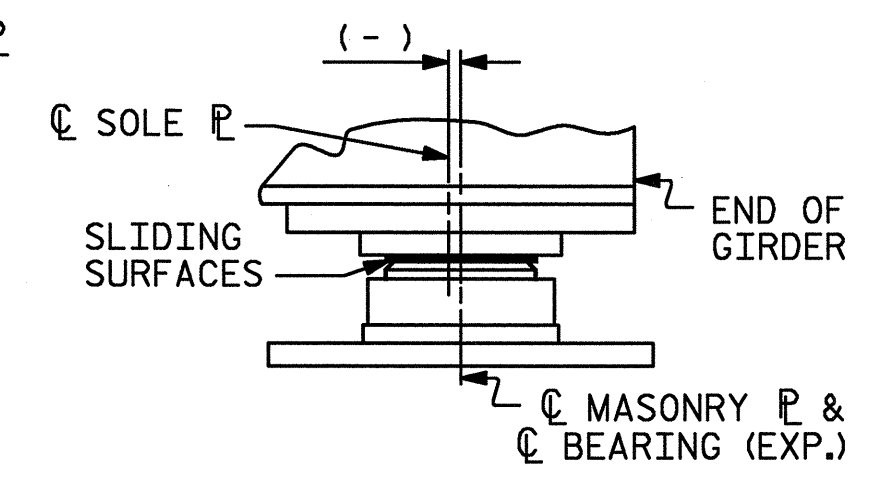
SECTION A-A  
PB1, FIXED  
(6 REQ'D.)



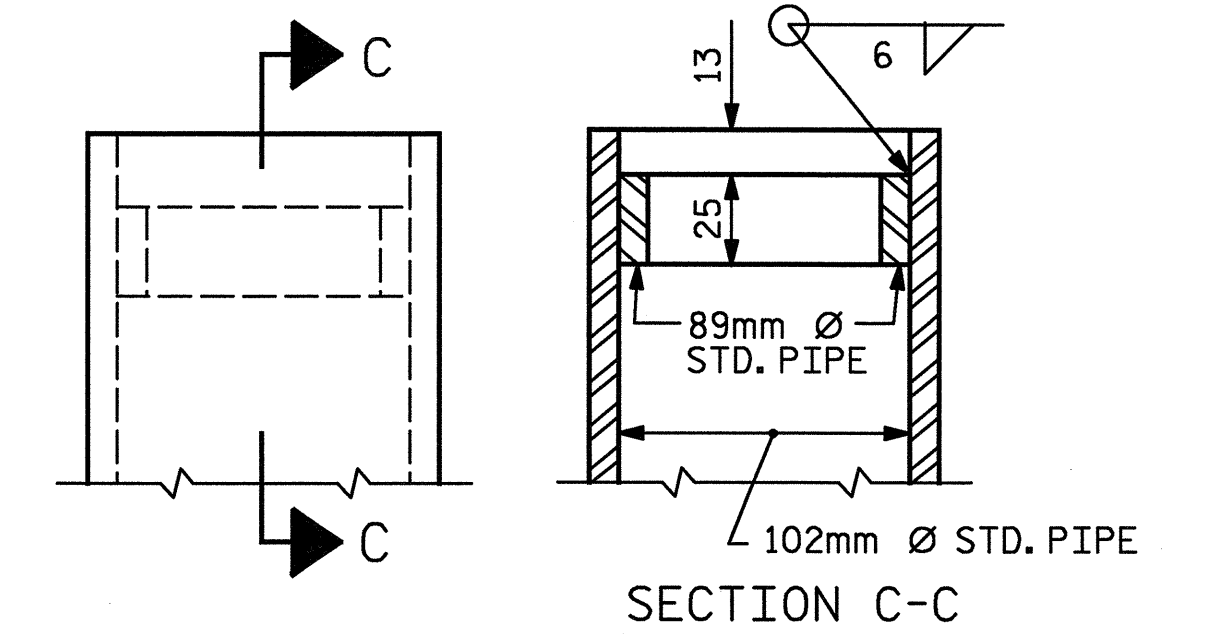
SECTION B-B  
PB2, EXP. (12 REQ'D.)

■ PB2 BEARING SIZES WERE INCREASED FOR EASING FUTURE REPLACEMENT OF POT BEARINGS.

POT BEARING DETAILS

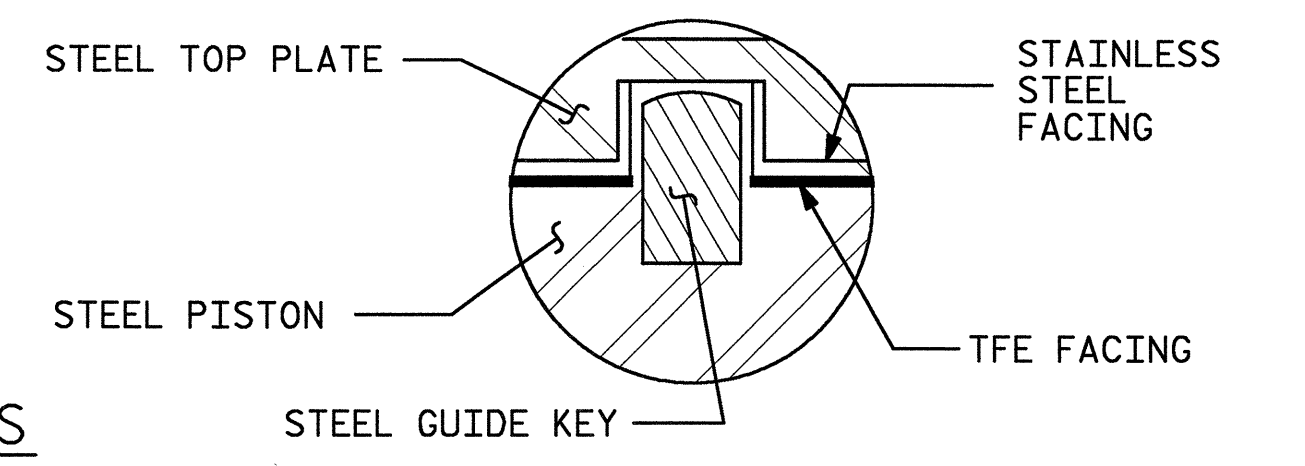


TEMPERATURE AND END ROTATION SETTING DETAILS

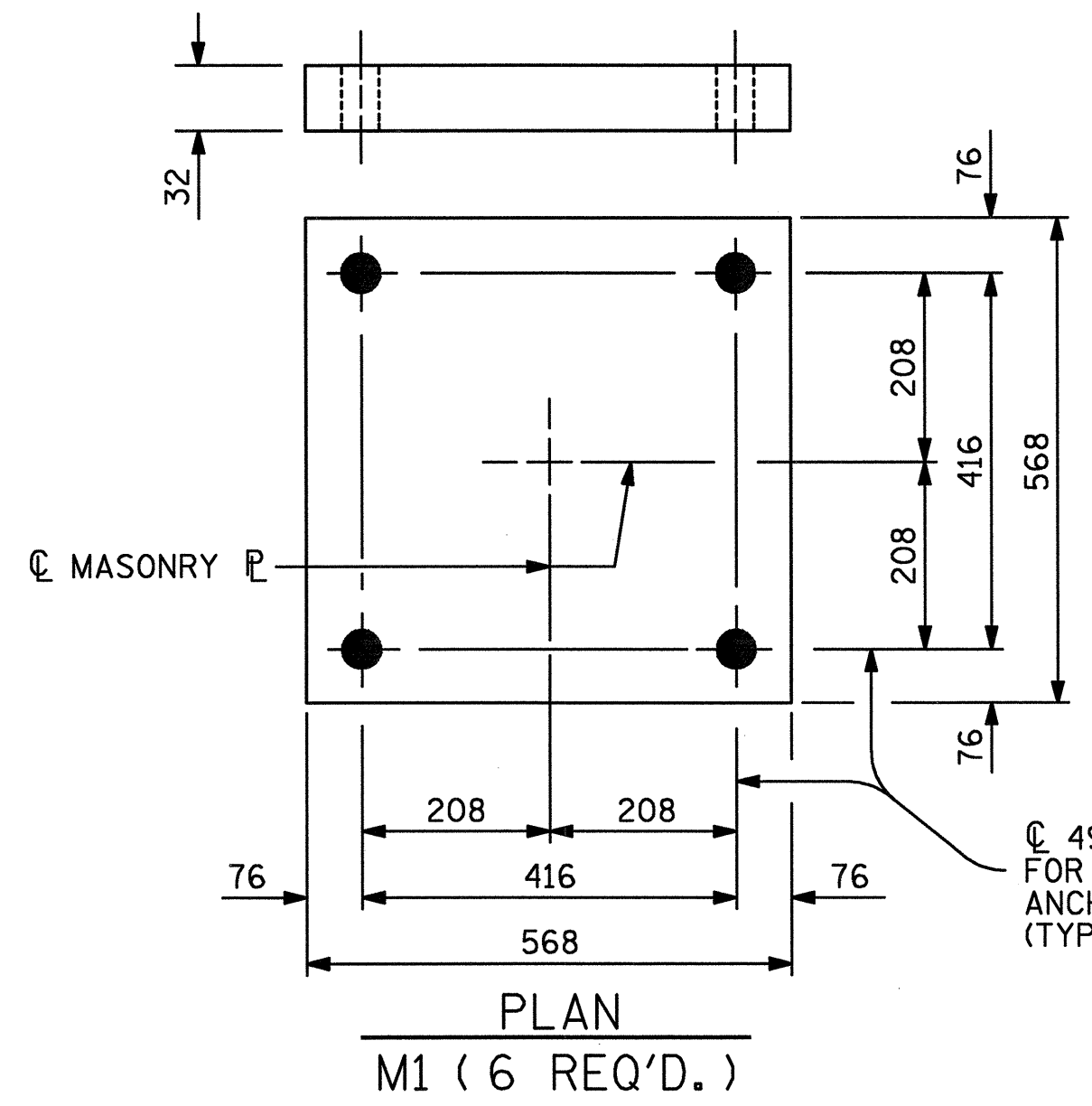


SECTION C-C

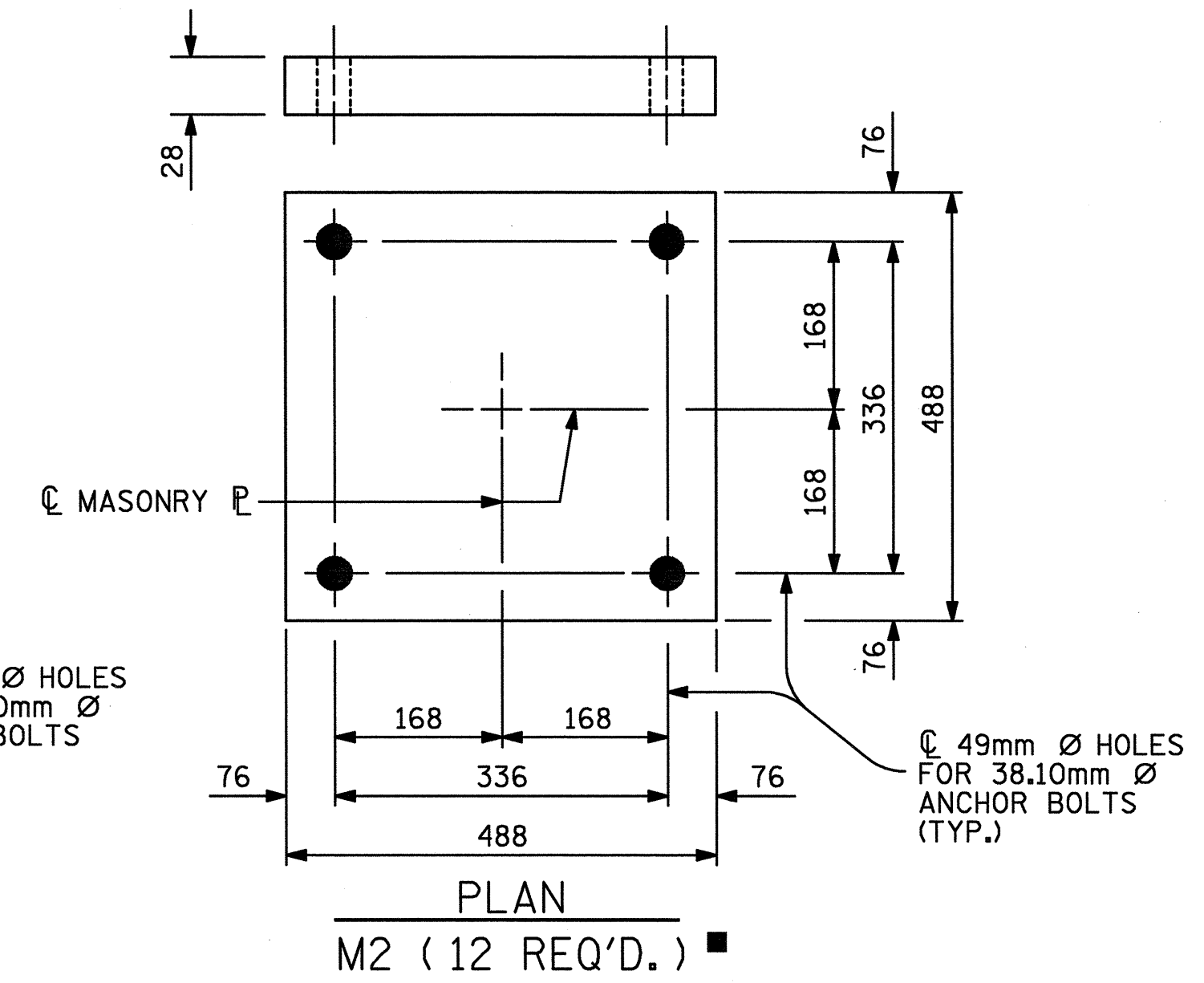
DETAIL "A"



GUIDE KEY DETAIL



PLAN  
M1 (6 REQ'D.)



PLAN  
M2 (12 REQ'D.)

MASONRY PLATE DETAILS

TABLE FOR PLATE SETTING DATA  
(EXPANSION POT BEARINGS)

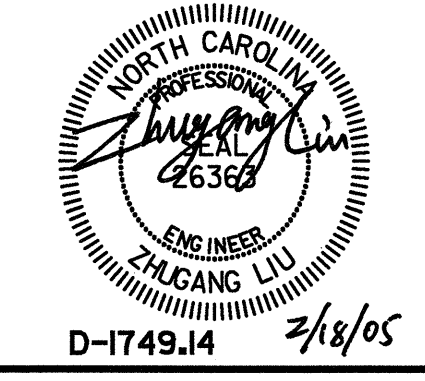
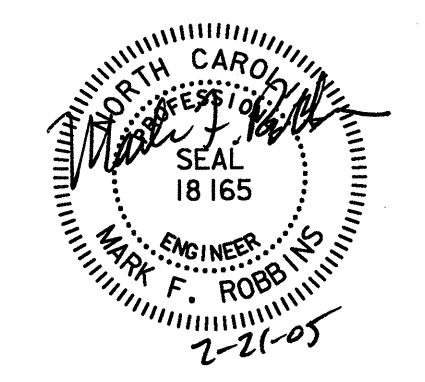
TEMPERATURE AT TIME OF SETTING	0° C	16° C	32° C	*
END BENTS 1 & 2	-8	0	8	-7

\*CORRECTION FOR END ROTATION DUE TO WEIGHT OF SLAB AND COMPOSITE DEAD LOAD.

TEMPERATURE SETTING DETAIL

BEARING	LOCATION	VERTICAL LOAD (kN)			LATERAL LOAD (kN)	TOTAL MOVEMENT (mm)
		DEAD	LIVE	TOTAL		
PB1 (FIXED)	BENT 1	1460	590	2050	295	0
PB2 (EXP.)	END BENTS 1 & 2	400	300	700	80	28

PROJECT NO. R-2552C  
JOHNSTON COUNTY  
STATION: POT 148+08.446 -L2- =  
POT 23+96.446 -Y4-



STATE OF NORTH CAROLINA  
DEPARTMENT OF TRANSPORTATION  
RALEIGH  
STANDARD  
POT BEARING  
DETAILS  
-LEFT LANE-

REVISIONS						SHEET NO.
NO.	BY:	DATE:	NO.	BY:	DATE:	TOTAL SHEETS
1			3			5-335
2			4			431

ASSEMBLED BY : LGH DATE : 8-04  
CHECKED BY : TVR DATE : 9-04  
DRAWN BY : RWW 8/99 REV. 10/17/00 RWW/LES  
CHECKED BY : LES 8/99 REV. 7/10/01 LES/RWW  
REV. 5/7/03 RWW/JTE