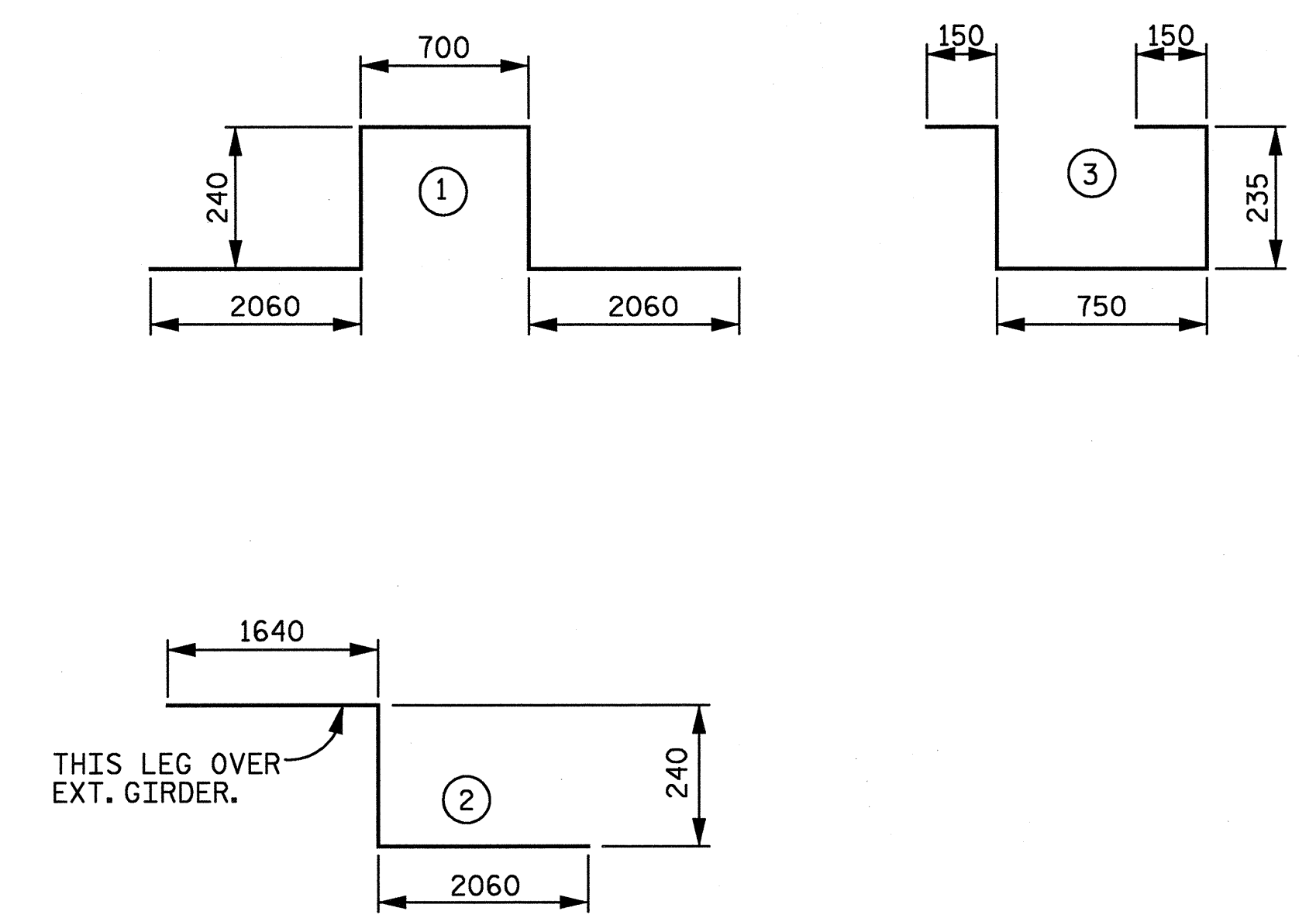


REINFORCING BAR SCHEDULE

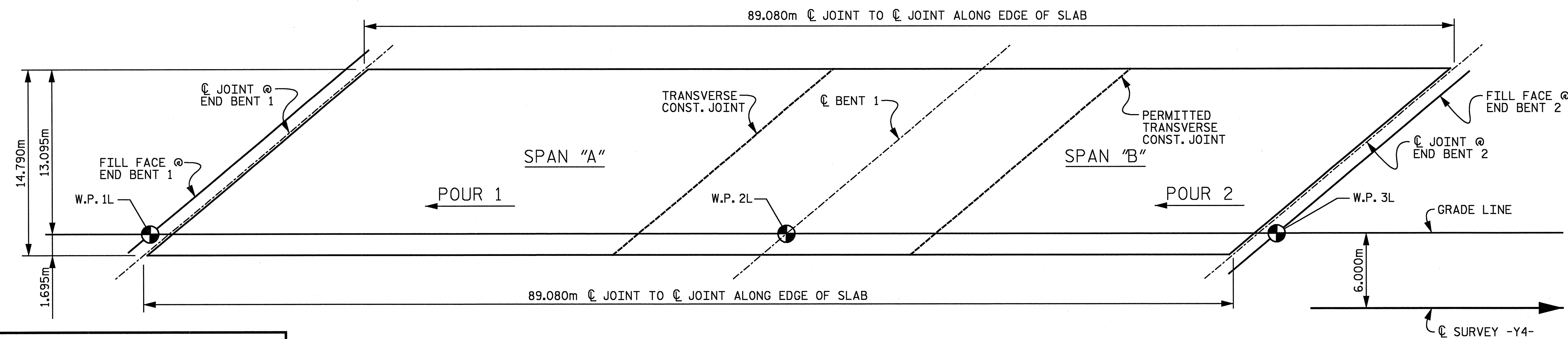
MARK	NO.	SIZE	TYPE	LENGTH (mm)	MASS (kg)	MARK	NO.	SIZE	TYPE	LENGTH (mm)	MASS (kg)	MARK	NO.	SIZE	TYPE	LENGTH (mm)	MASS (kg)	MARK	NO.	SIZE	TYPE	LENGTH (mm)	MASS (kg)
* A1	417	#16	STR.	14,680	9,501	* A35	4	#16	STR.	5,340	33	A69	4	#16	STR.	9,500	59	* A103	4	#16	STR.	300	2
A2	417	#16	STR.	14,680	9,501	* A36	4	#16	STR.	5,060	31	A70	4	#16	STR.	9,220	57	A104	8	#16	STR.	800	10
* A3	4	#16	STR.	14,460	90	* A37	4	#16	STR.	4,780	30	A71	4	#16	STR.	8,940	55	* B1	238	#16	STR.	13,340	4,927
* A4	4	#16	STR.	14,180	88	* A38	4	#16	STR.	4,480	28	A72	4	#16	STR.	8,660	54	* B2	198	#19	STR.	13,960	6,178
* A6	4	#16	STR.	13,900	86	* A39	4	#16	STR.	4,200	26	A73	4	#16	STR.	8,360	52	B3	357	#16	STR.	13,260	7,347
* A7	4	#16	STR.	13,600	84	* A40	4	#16	STR.	3,920	24	A74	4	#16	STR.	8,080	50	* G1	4	#16	STR.	11,840	74
* A8	4	#16	STR.	13,320	83	* A41	4	#16	STR.	3,640	23	A75	4	#16	STR.	7,800	48	* K1	24	#16	①	5,300	197
* A9	4	#16	STR.	13,040	81	* A42	4	#16	STR.	3,340	21	A76	4	#16	STR.	7,520	47	* K2	12	#16	②	3,940	73
* A10	4	#16	STR.	12,760	79	* A43	4	#16	STR.	3,060	19	A77	4	#16	STR.	7,220	45	* S1	100	#13	③	1,520	151
* A11	4	#16	STR.	12,460	77	* A44	4	#16	STR.	2,780	17	A78	4	#16	STR.	6,940	43						
* A12	4	#16	STR.	12,180	76	* A45	4	#16	STR.	2,500	16	A79	4	#16	STR.	6,660	41						
* A13	4	#16	STR.	11,900	74	* A46	4	#16	STR.	2,200	14	A80	4	#16	STR.	6,380	40						
* A14	4	#16	STR.	11,620	72	* A47	4	#16	STR.	1,920	12	A81	4	#16	STR.	6,080	38						
* A15	4	#16	STR.	11,320	70	* A48	4	#16	STR.	1,640	10	A82	4	#16	STR.	5,800	36						
* A16	4	#16	STR.	11,040	69	* A49	4	#16	STR.	1,360	8	A83	4	#16	STR.	5,520	34						
* A17	4	#16	STR.	10,760	67	* A50	4	#16	STR.	1,060	7	A84	4	#16	STR.	5,240	33						
* A18	4	#16	STR.	10,480	65	A51	4	#16	STR.	14,640	91	A85	4	#16	STR.	4,940	31						
* A19	4	#16	STR.	10,180	63	A52	4	#16	STR.	14,360	89	A86	4	#16	STR.	4,660	29						
* A20	4	#16	STR.	9,900	61	A53	4	#16	STR.	14,060	87	A87	4	#16	STR.	4,380	27						
* A21	4	#16	STR.	9,620	60	A54	4	#16	STR.	13,780	86	A88	4	#16	STR.	4,100	25						
* A22	4	#16	STR.	9,340	58	A55	4	#16	STR.	13,500	84	A89	4	#16	STR.	3,800	24						
* A23	4	#16	STR.	9,040	56	A56	4	#16	STR.	13,220	82	A90	4	#16	STR.	3,520	22						
* A24	4	#16	STR.	8,760	54	A57	4	#16	STR.	12,920	80	A91	4	#16	STR.	3,240	20						
* A25	4	#16	STR.	8,480	53	A58	4	#16	STR.	12,640	78	A92	4	#16	STR.	2,960	18						
* A26	4	#16	STR.	8,200	51	A59	4	#16	STR.	12,360	77	A93	4	#16	STR.	2,660	17						
* A27	4	#16	STR.	7,900	49	A60	4	#16	STR.	12,080	75	A94	4	#16	STR.	2,380	15						
* A28	4	#16	STR.	7,620	47	A61	4	#16	STR.	11,780	73	A95	4	#16	STR.	2,100	13						
* A29	4	#16	STR.	7,340	46	A62	4	#16	STR.	11,500	71	A96	4	#16	STR.	1,820	11						
* A30	4	#16	STR.	7,060	44	A63	4	#16	STR.	11,220	70	A97	4	#16	STR.	1,520	9						
* A31	4	#16	STR.	6,760	42	A64	4	#16	STR.	10,940	68	A98	4	#16	STR.	1,240	8						
* A32	4	#16	STR.	6,480	40	A65	4	#16	STR.	10,640	66	* A99	6	#16	STR.	900	8						
* A33	4	#16	STR.	6,200	38	A66	4	#16	STR.	10,360	64	A100	6	#16	STR.	1,100	10						
* A34	4	#16	STR.	5,920	37	A67	4	#16	STR.	10,080	63	* A101	6	#16	STR.	600	6						
	4	#16	STR.	5,620	35	A68	4	#16	STR.	9,800	61	A102	6	#16	STR.	900	8						

* DENOTES EPOXY COATED REINFORCING

BAR TYPES



ALL BAR DIMENSIONS ARE OUT TO OUT.



LAYOUT FOR COMPUTING AREA OF REINFORCED CONCRETE DECK SLAB (SQ. METER = 1317.5)

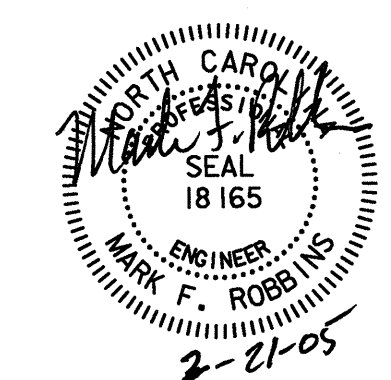
SUPERSTRUCTURE REINFORCING STEEL LENGTHS ARE BASED ON THE FOLLOWING MINIMUM SPLICE LENGTHS

BAR SIZE	SUPERSTRUCTURE EXCEPT APPROACH SLABS, PARAPET, AND BARRIER RAIL		APPROACH SLABS		PARAPET AND BARRIER RAIL
	EPOXY COATED	UNCOATED	EPOXY COATED	UNCOATED	
#13	610	540	610	540	840
#16	770	660	770	660	1050
#19	920	790	1190	790	1330
#22	1580	1060			
#25	2080	1390			

SUPERSTRUCTURE BILL OF MATERIAL			
	CLASS AA CONCRETE (m ³)	REINFORCING STEEL (kg)	EPOXY COATED REINFORCING STEEL (kg)
POUR 1	119.4		
POUR 2	228.0		
TOTALS	347.4	19,242	23,431

GROOVING BRIDGE FLOORS	
APPROACH SLABS	312.4 SQ.METER
BRIDGE DECK	1,138.7 SQ.METER
TOTAL	1,451.1 SQ.METER

■ QUANTITIES FOR BARRIER RAIL ARE NOT INCLUDED.



PROJECT NO. R-2552C
JOHNSTON COUNTY
STATION: POT 148+08.446 -L2- =
POT 23+96.446 -Y4-

STATE OF NORTH CAROLINA
DEPARTMENT OF TRANSPORTATION
RALEIGH
STANDARD
SUPERSTRUCTURE
BILL OF MATERIAL
-LEFT LANE-

REVISIONS						SHEET NO.
NO.	BY:	DATE:	NO.	BY:	DATE:	5-341
1			3			TOTAL SHEETS 413
2			4			

D-1749.20

STD. NO. BOM1SM

02/17/2005 05:47:40 PM n:\proj\3109-100\ustation\struct\final\3109-100_ss_bom.dgn