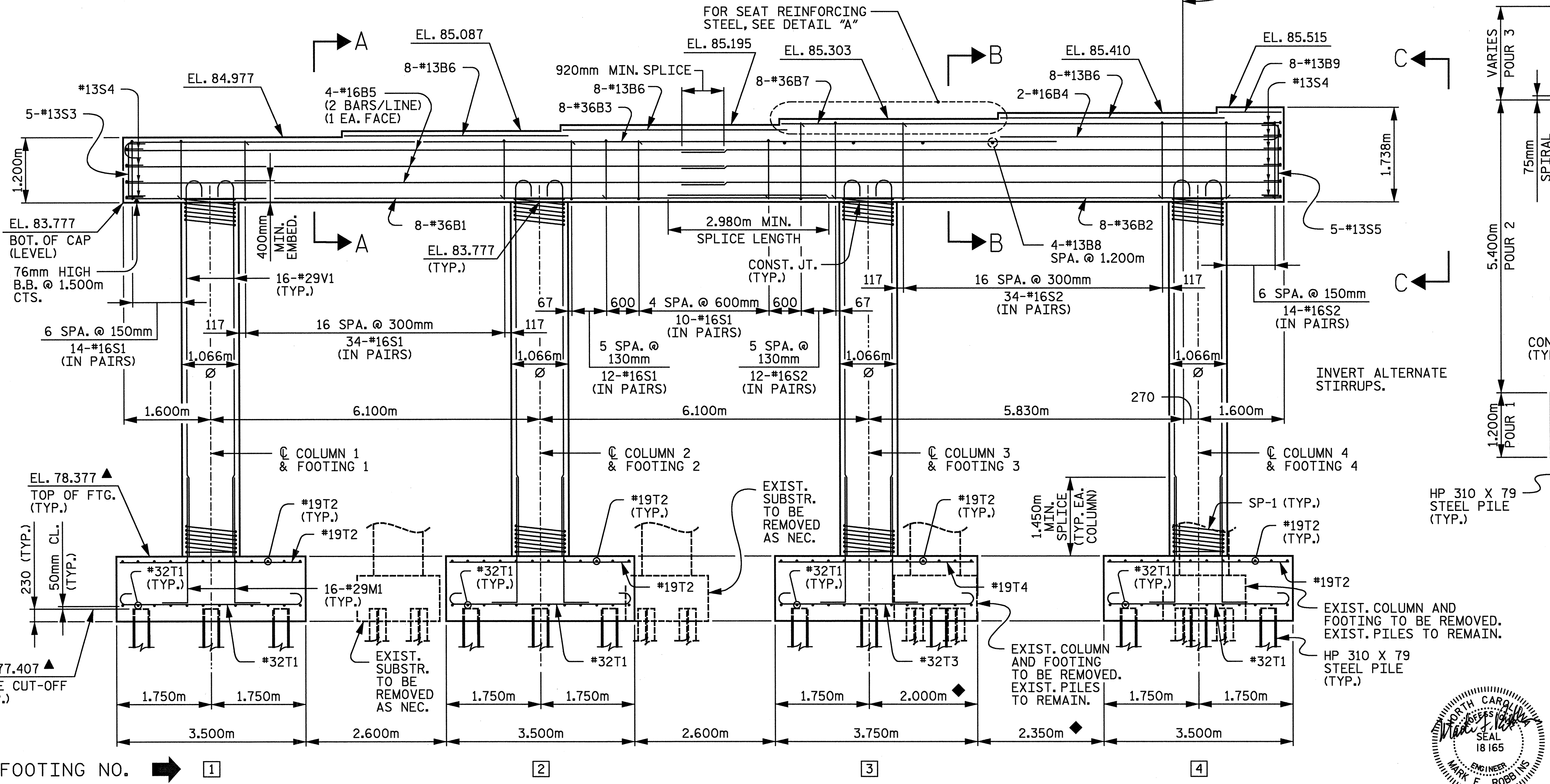


NOTE:
SHIFT "U" BARS SLIGHTLY AS NECESSARY
TO CLEAR ANCHOR BOLTS.

DETAIL "A"
(TYPICAL EACH SEAT EXCEPT AS NOTED FOR GDR. 6)
■ AT GDR. 6, PLACE 9-#13S6 CENTERED UNDER GIRDER ONLY.



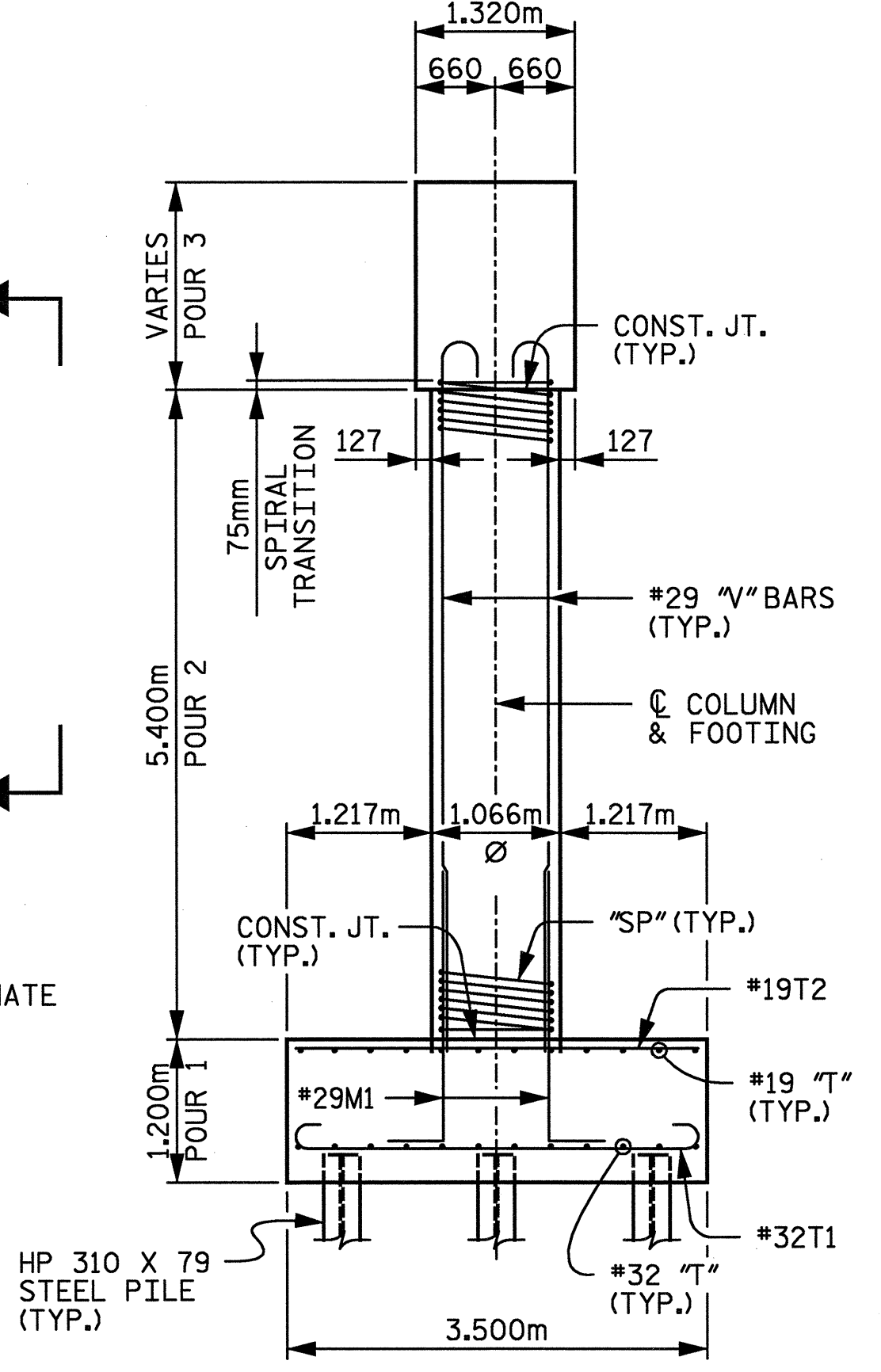
ELEVATION

NOTE:
REINFORCING STEEL TYP.
EA. COLUMN & FOOTING

◆ FOR EDGE DISTANCE NOTE, SEE SHEET 2 OF 3.

▲ THE PILE CUT-OFF POINTS SHALL BE FIELD VERIFIED TO MATCH EXISTING TOP OF PILES. THE TOP OF FOOTING ELEVATION AND #29M1 BARS SHALL BE ADJUSTED ACCORDINGLY.

FOR EXISTING PILE RETENTION NOTES, SEE SHEET 2 OF 3.



END VIEW

PROJECT NO. R-2552C
JOHNSTON COUNTY
STATION: POT 148+08.446 -L2-
POT 23+96.446 -Y4-

SHEET 1 OF 3

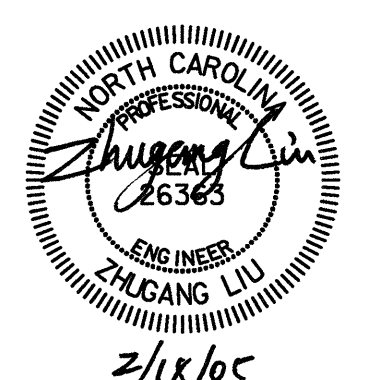
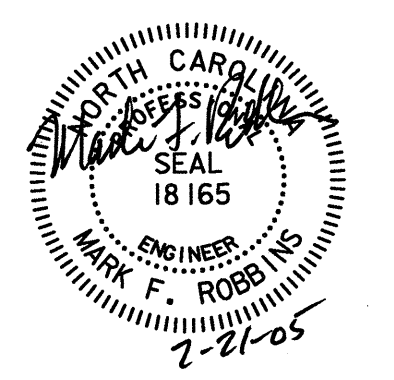
NO.	DATE	BY
1		
2		

STATE OF NORTH CAROLINA
DEPARTMENT OF TRANSPORTATION
RALEIGH

BENT 1

-LEFT LANE-

SHEET NO. 5-345
TOTAL SHEETS 431



RALPH WHITEHEAD ASSOCIATES, INC.
CONSULTING ENGINEERS
P.O. BOX 35624 CHARLOTTE, N.C. 28235

DRAWN BY: DDL DATE: 8-04 DWG. NO.:
CHECKED BY: TVR DATE: 12-04 D-1749.24

02/17/2005 05:47:38 PM n:\proj\3109-100\station\struct\final\3109-100_bent_1.dgn david.loweiry