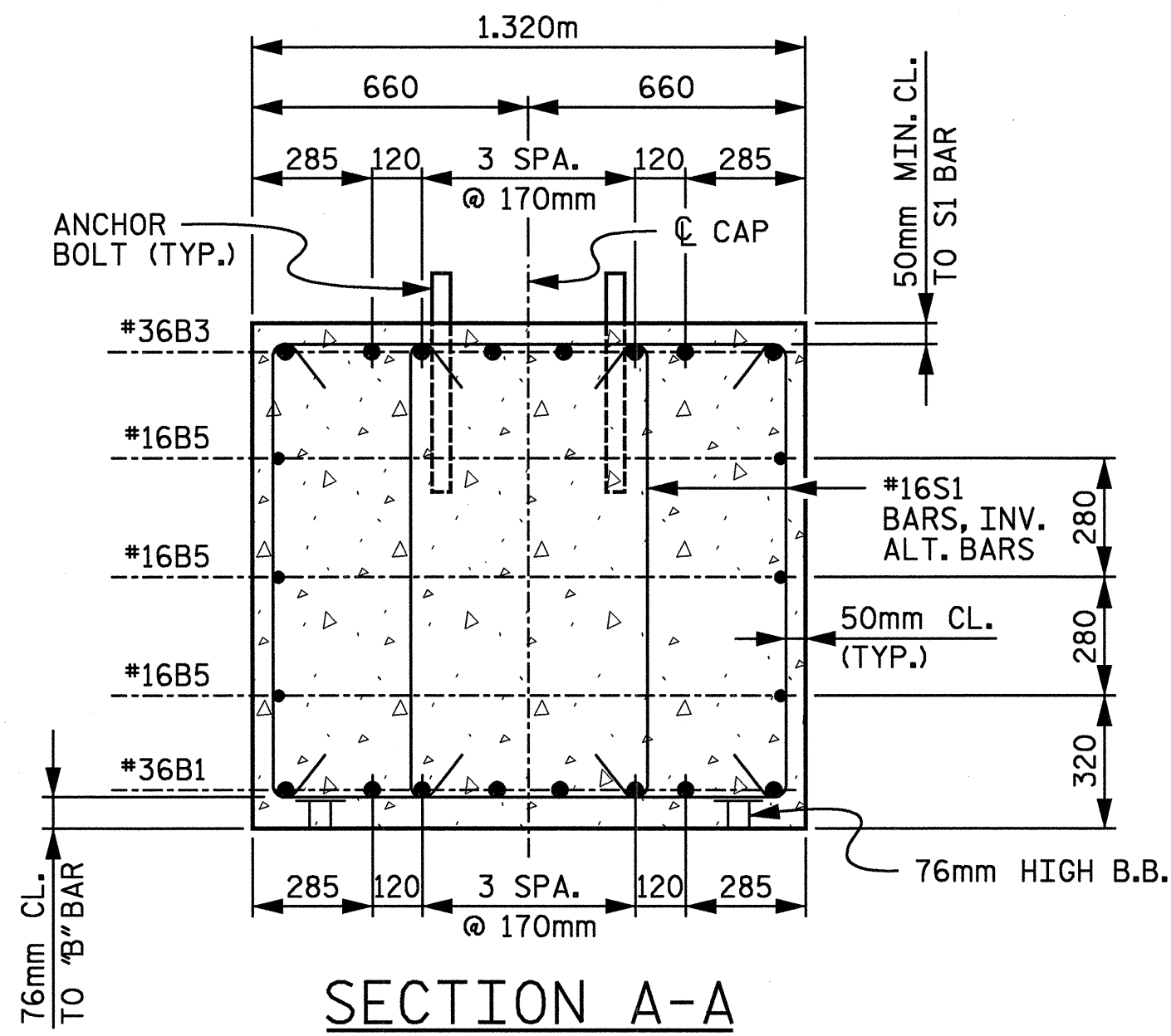
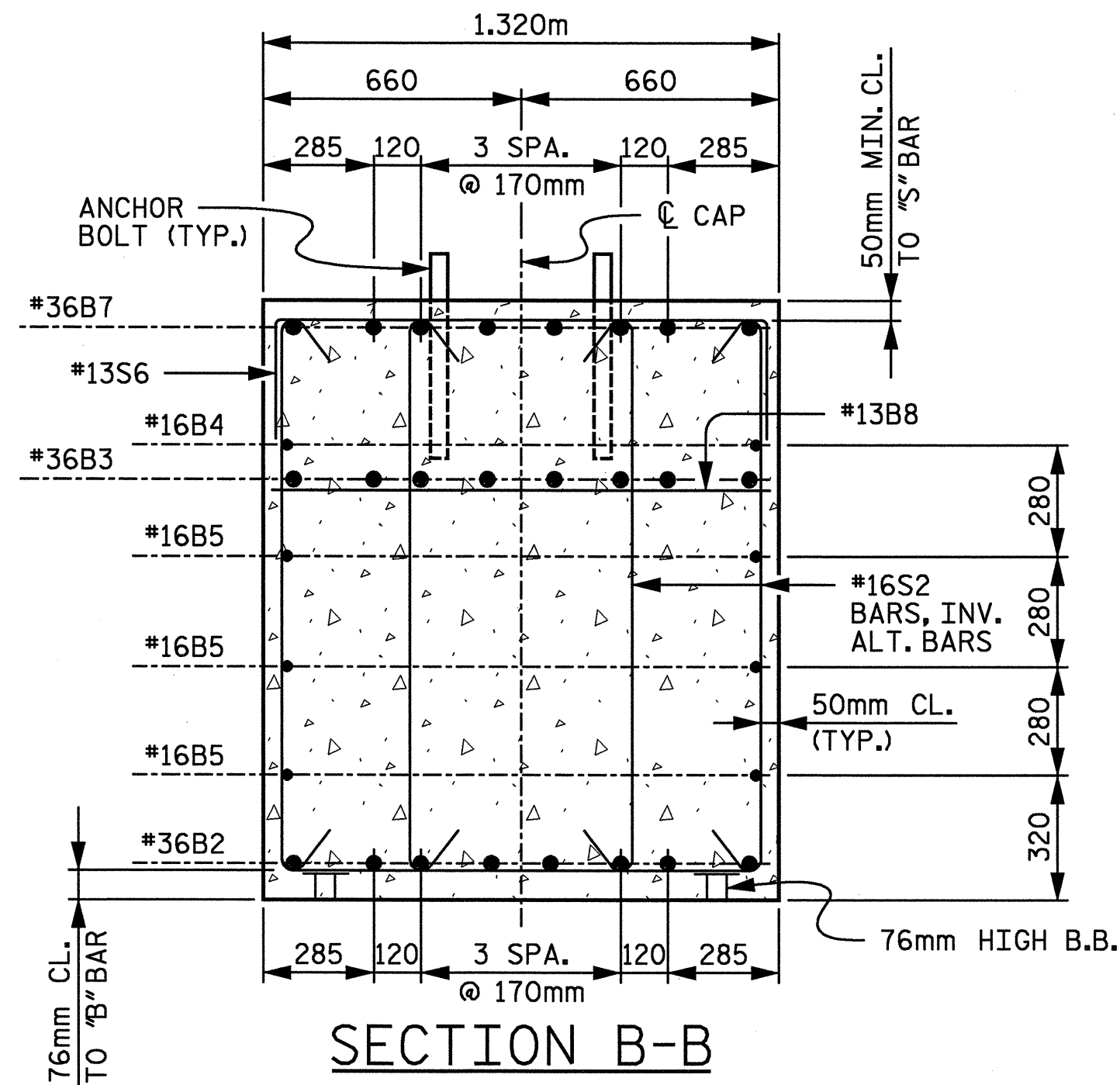


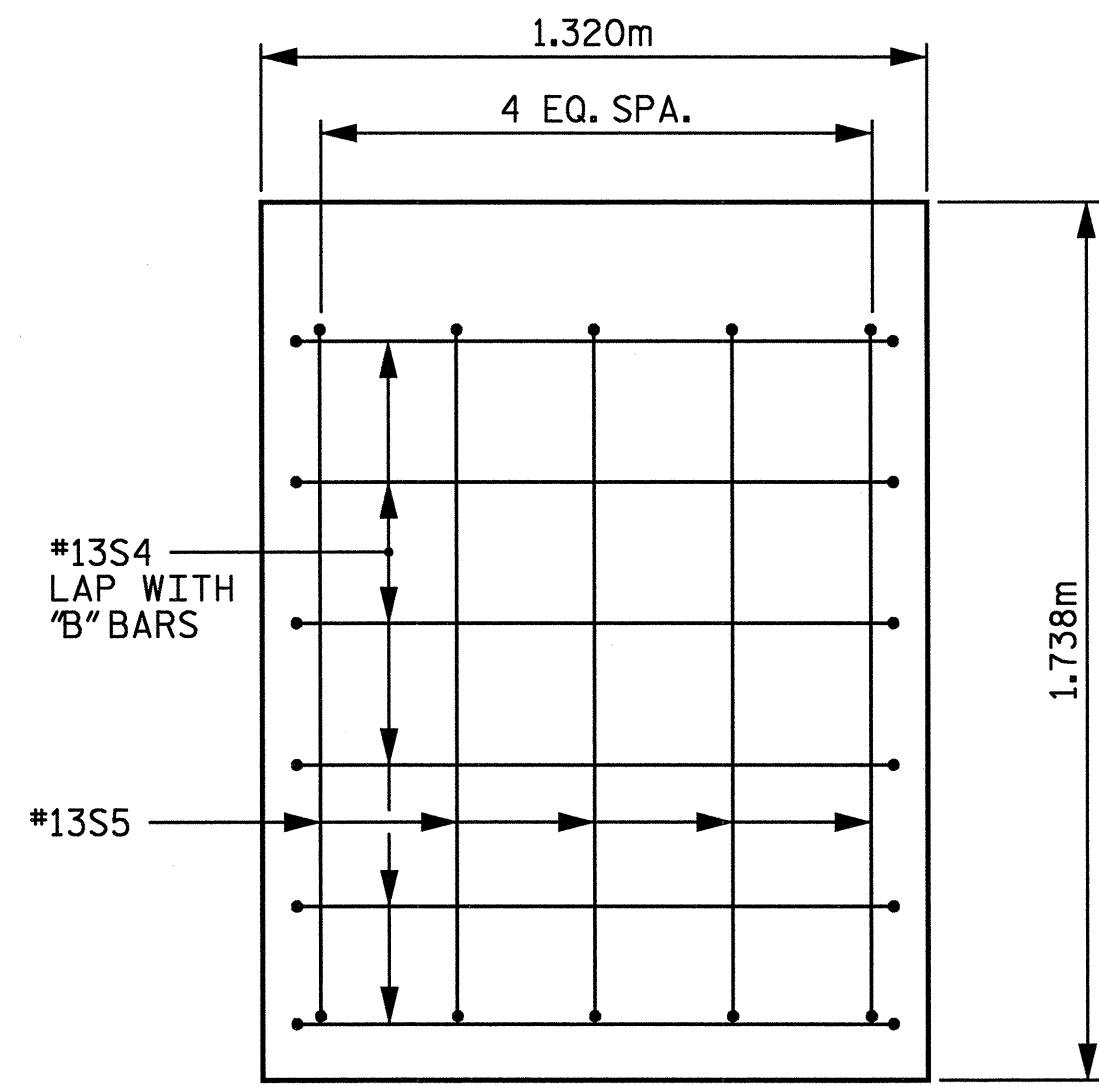
02/17/2005 05:47:37 PM n:\proj\3109-100\station\struct\find\3109-100\_bent-1.dgn



SECTION A-A

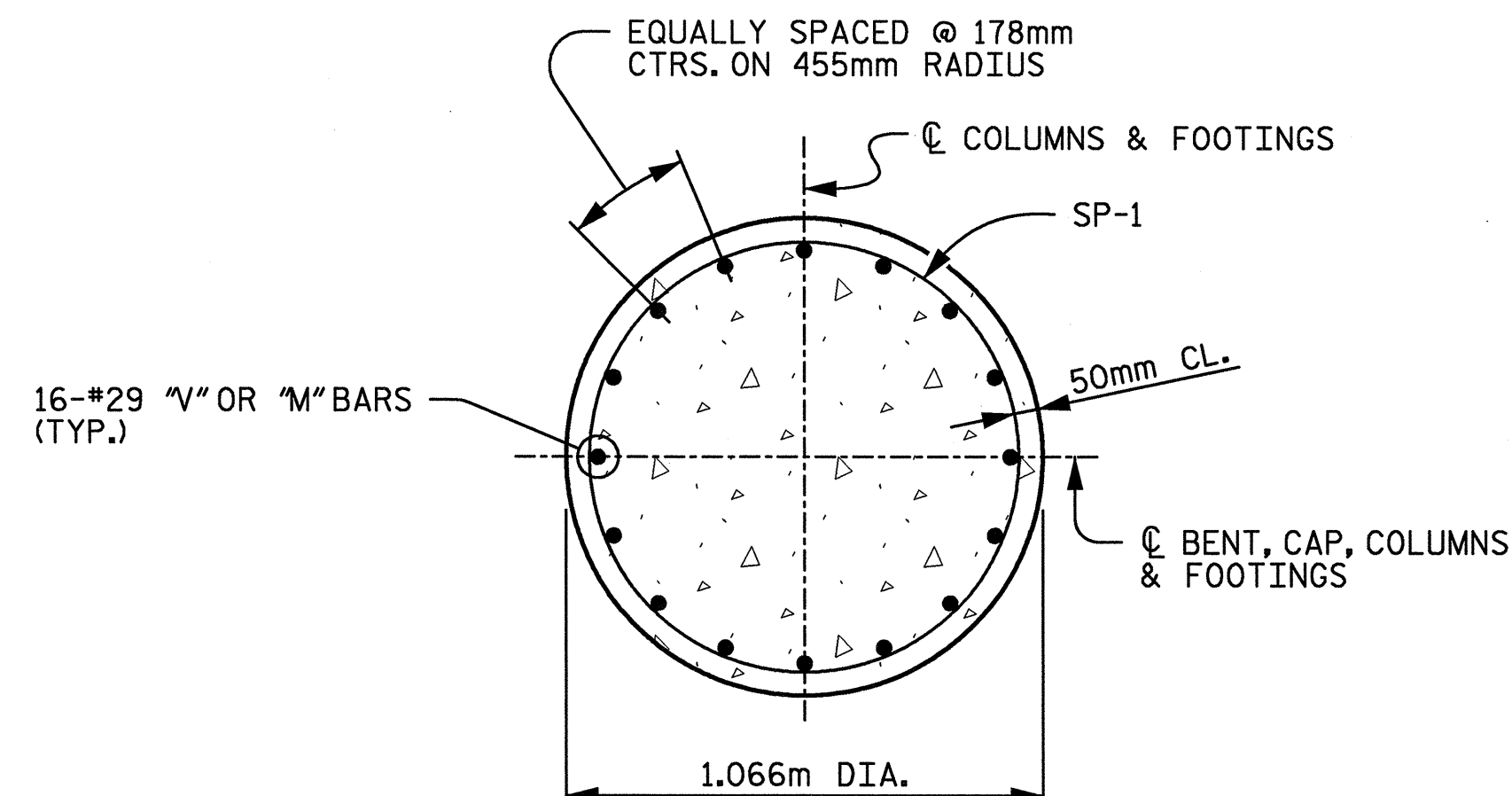


SECTION B-B



VIEW C-C

(RIGHT END SHOWN, LEFT END HAS 4-#13S4 & 5-#13S5 BARS)

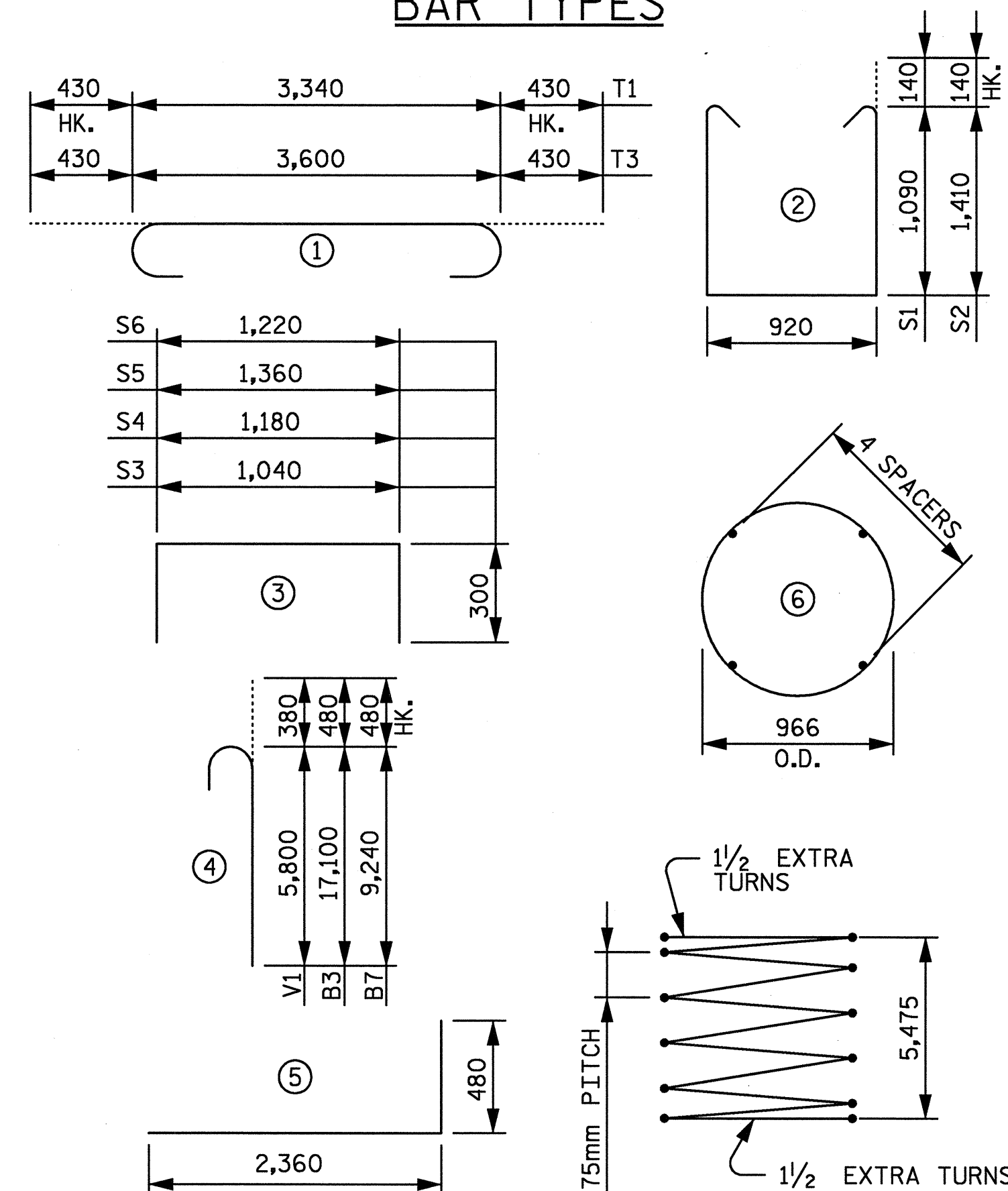


TYPICAL SECTION THROUGH COLUMN

**NOTES :**

- STIRRUPS IN CAP MAY BE SHIFTED SLIGHTLY AS NECESSARY TO CLEAR ANCHOR BOLTS.
- HOOKS ON "V" BARS MAY BE TURNED AS NECESSARY FOR PLACING REINFORCING STEEL.
- PILES SHALL BE DRIVEN TO A MINIMUM BEARING CAPACITY OF 530 KN.
- FOR PILE SPLICE DETAIL, SEE "END BENT 1", SHEET 3 OF 3.
- WHEN DRIVING PILES, THE MAXIMUM BLOW COUNT SHALL NOT BE EXCEEDED.
- FOR OTHER NOTES, SEE "GENERAL DRAWING LOCATION SKETCH, GENERAL NOTES AND TOTAL BILL OF MATERIALS" SHEET.

**BAR TYPES**



ALL BAR DIMENSIONS ARE OUT TO OUT.

**BILL OF REINFORCING**

MARK	NO.	SIZE	TYPE	LENGTH (mm)	MASS (kg)
B1	8	#36	STR.	13,100	829
B2	8	#36	STR.	11,300	715
B3	8	#36	④	17,580	1,112
B4	2	#16	STR.	5,200	16
B5	12	#16	STR.	11,160	208
B6	24	#16	STR.	4,060	151
B7	8	#36	④	9,720	615
B8	4	#13	STR.	1,220	5
B9	8	#13	STR.	1,120	9
M1	64	#29	⑤	2,840	920
S1	70	#16	②	3,380	367
S2	60	#16	②	4,020	374
S3	5	#13	③	1,640	8
S4	10	#13	③	1,780	18
S5	5	#13	③	1,960	10
S6	84	#13	③	1,820	152
T1	90	#32	①	4,200	2,421
T2	90	#19	STR.	3,340	672
T3	17	#32	①	4,460	486
T4	17	#19	STR.	3,600	137
V1	64	#29	④	6,180	2,001
SP-1	4	#13	⑥	227,700	905

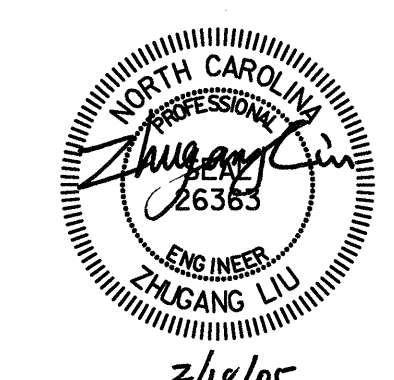
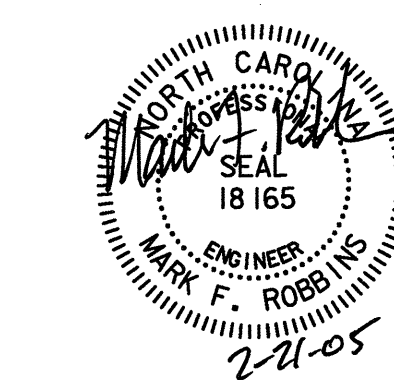
△ THE SP-1 SPIRAL REINFORCING STEEL SHALL BE W20 OR D-20 COLD DRAWN WIRE OR #13 PLAIN OR DEFORMED BAR.

**QUANTITIES**

REINFORCING STEEL	11,226	kg
SPIRAL COLUMN REINFORCING STEEL	905	kg
CLASS A CONCRETE	POUR 1 : 59.9 CU. METERS	
	POUR 2 : 19.6 CU. METERS	
	POUR 3 : 40.8 CU. METERS	
	TOTAL : 120.3 CU. METERS	
HP 310 X 79 STEEL PILES	29 (NO.)	
	113.4	METERS

PROJECT NO. R-2552C  
 JOHNSTON COUNTY  
 STATION: POT 148+08.446 -L2-  
 POT 23+96.466 -Y4-

SHEET 3 OF 3



**RALPH WHITEHEAD ASSOCIATES, INC.**  
 CONSULTING ENGINEERS  
 P.O. BOX 35624 CHARLOTTE, N.C. 28235  
 DRAWN BY: DDL DATE: 8-04 DWG. NO.:  
 CHECKED BY: TVR DATE: 12-04 D-1749.26

REVISIONS		DATE	
NO.	BY	NO.	DATE
1		3	
2		4	

STATE OF NORTH CAROLINA  
 DEPARTMENT OF TRANSPORTATION  
 RALEIGH  
**BENT 1**  
 -LEFT LANE-

SHEET NO. 5-317  
 TOTAL SHEETS 431