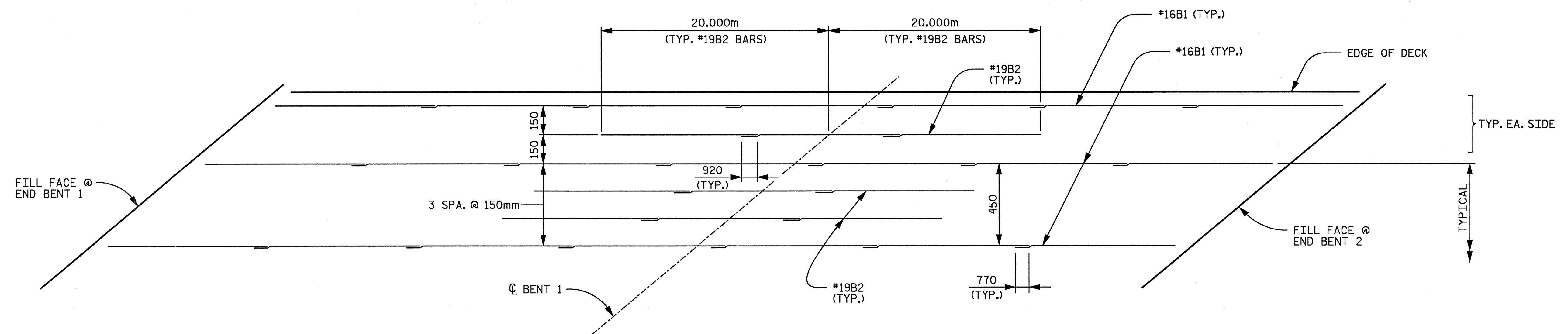
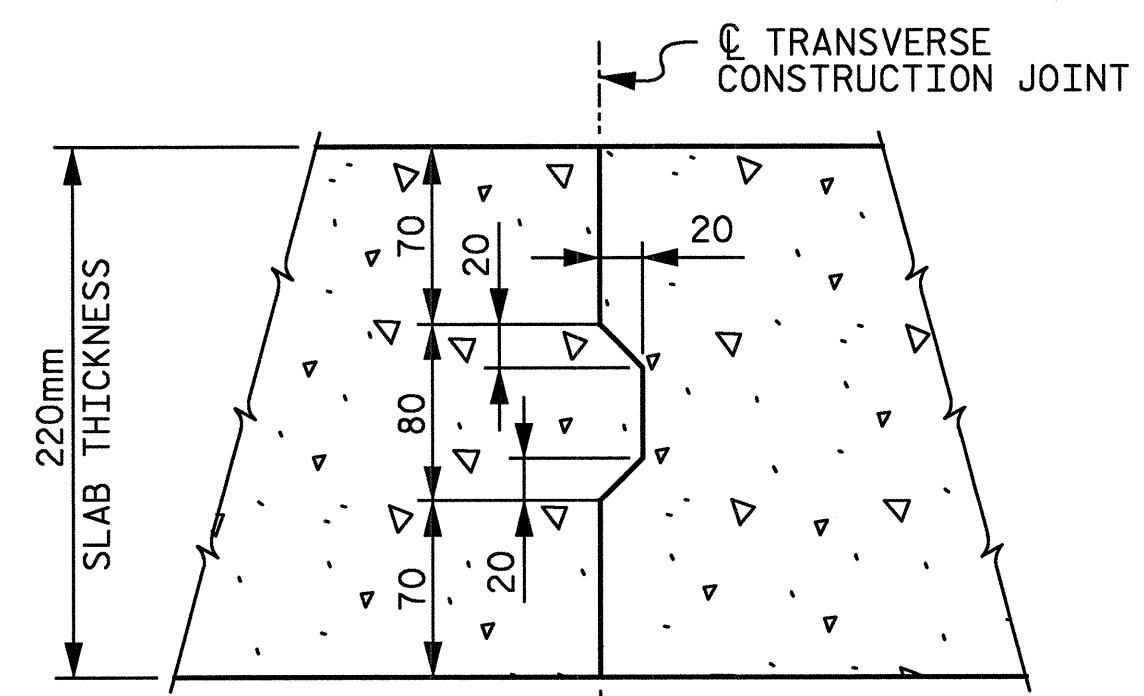


POURING DIAGRAM
(TRANSVERSE CONSTR. JT. PARALLEL TO C BENT 1)

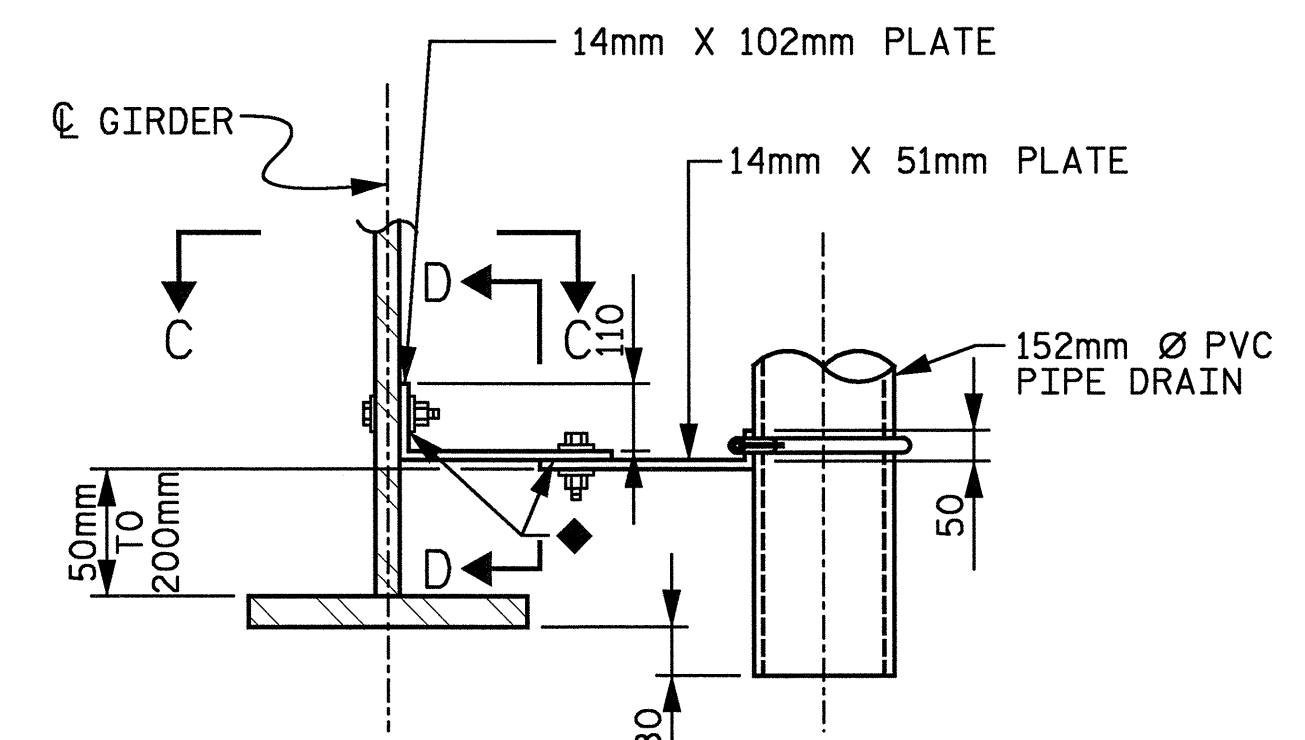


TOP "B" BAR REINFORCING LAYOUT

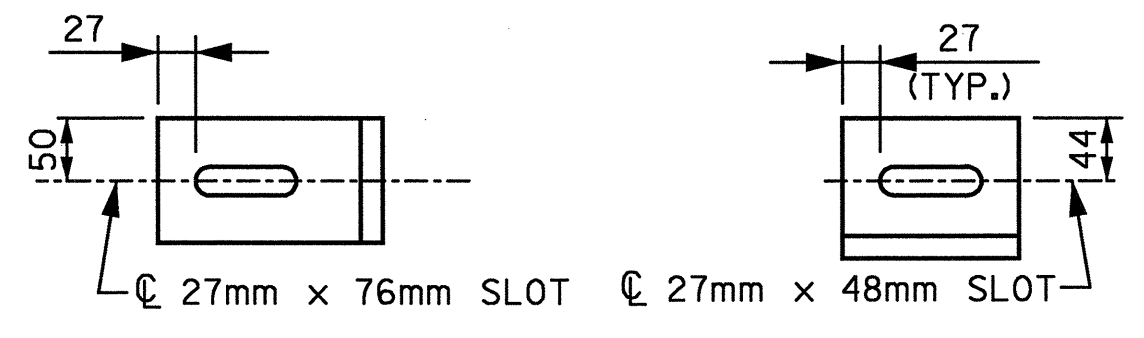


NOTE: REINFORCING STEEL IN SLAB NOT SHOWN. LONGITUDINAL REINFORCING STEEL SHALL BE CONTINUOUS THROUGH JOINT.

**TRANSVERSE CONSTRUCTION JOINT
IN DECK SLAB**



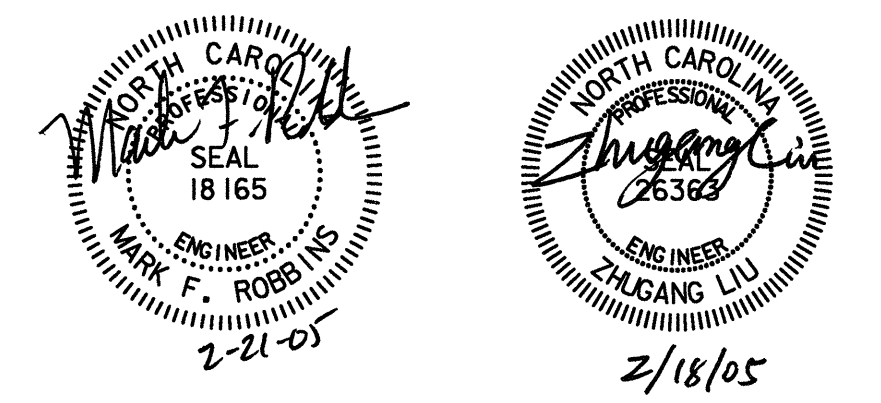
◆ PROVIDE SLOTS AS NECESSARY TO ALLOW ADJUSTMENTS Laterally AND LONGITUDINALLY



**SECTION C-C SECTION D-D
DRAIN CONNECTOR DETAILS**

PIPE DRAIN NOTES

COUPLING IN DRAIN PIPE WILL BE PERMITTED AS APPROVED BY THE ENGINEER.
TOP OF FLOOR DRAIN TO BE SET 10mm BELOW SURFACE OF SLAB.
(4) - 13mm SQUARE LUGS TO BE GLUED TO THE PVC PLASTIC PIPE AT EQUAL SPACES AROUND THE PIPE DRAIN APPROXIMATELY 100mm FROM THE TOP OF THE PIPE.
BOLT SIZES TO BE SAME AS CROSSFRAME CONNECTIONS. STAINLESS STEEL WORM DRIVE HOSE CLAMP SHALL BE COMMERCIAL QUALITY.
PVC DECK DRAINS SHALL BE PAINTED WITH TWO COATS OF BROWN PRIMER MEETING THE REQUIREMENTS OF ARTICLE 1080-12 OF THE STANDARD SPECIFICATIONS. EACH COAT SHALL BE 0.050mm THICK. DECK DRAINS SHALL BE ROUGHENED PRIOR TO PAINTING. NO SEPARATE PAYMENT SHALL BE MADE FOR PAINTING PVC DECK DRAINS AS THIS IS CONSIDERED INCIDENTAL TO THE PAY ITEM FOR REINFORCED CONCRETE DECK SLAB.



PROJECT No. R-2552C
JOHNSTON COUNTY
STATION: POT 148+08.446 -L2-
POT 23+96.446 -Y4-

REVISIONS		DATE	
NO.	BY	NO.	DATE
1		3	
2		4	

STATE OF NORTH CAROLINA
DEPARTMENT OF TRANSPORTATION
RALEIGH

**POURING DIAGRAM
AND LAP STAGGER DETAILS
-RIGHT LANE-**

DRAWN BY	LGH	DATE	11-04	DWG. NO.	D-1750.09
CHECKED BY	TVR	DATE	12-04		

SHEET NO.	5-326
TOTAL SHEETS	431

02/17/2005 04:55:55 PM \\prj\3109-200\ustation\struc\final\3109-200_pour.dgn david.lowe.r