

NOTES

FOR POT BEARINGS, SEE SPECIAL PROVISIONS.

AT ALL POINTS OF SUPPORT IN SPANS A & B, NUTS FOR ANCHOR BOLTS SHALL BE TIGHTENED FINGER TIGHT AND GIVEN AN ADDITIONAL 1/4 TURN. THE THREAD OF THE NUT AND BOLT SHALL THEN BE BURRED WITH A SHARP POINTED TOOL.

WHEN WELDING THE SOLE PLATE TO THE GIRDER, USE TEMPERATURE INDICATING WAX PENS, OR OTHER SUITABLE MEANS, TO ENSURE THAT THE TEMPERATURE OF THE BEARING DOES NOT EXCEED 121°C. TEMPERATURES ABOVE THIS MAY DAMAGE THE TFE OR ELASTOMER.

AFTER BEARING ASSEMBLY IS IN PLACE AND ANCHOR BOLTS HAVE BEEN FINALLY POSITIONED, THEY SHALL BE GROUTED IN PLACE AS SHOWN.

THE CLOSURE PLATE, GROUT PIPE AND STANDARD PIPE FOR THIS ASSEMBLY NEED NOT BE GALVANIZED.

SOLE PLATES SHOULD BE WELDED TO BEAM FLANGES AND ANCHOR BOLTS SHOULD BE GROUTED BEFORE FALSEWORK IS PLACED.

ALL SURFACES OF BEARING PLATES SHALL BE SMOOTH AND STRAIGHT.

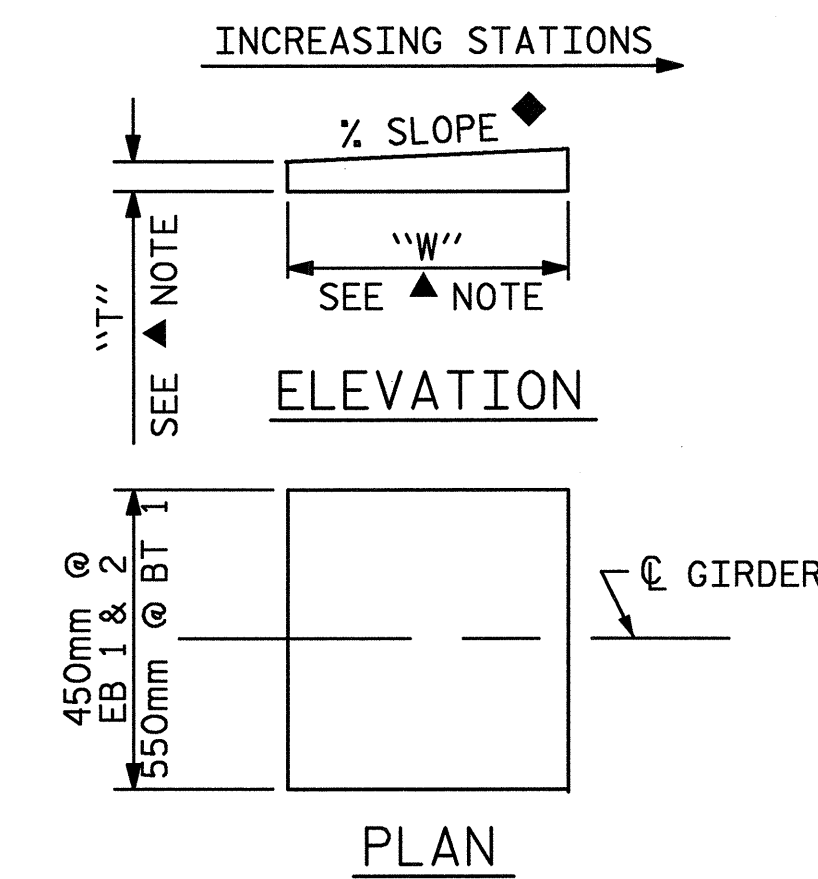
FOR THERMAL SPRAYED COATINGS (METALLIZATION), SEE SPECIAL PROVISIONS.

THE CONTRACTOR MAY SUBSTITUTE DISC BEARINGS FOR THE POT BEARINGS SHOWN. FOR OPTIONAL DISC BEARINGS, SEE SPECIAL PROVISIONS.

FOR PROJECTION OF ANCHOR BOLTS, SEE END BENTS AND BENT SHEETS.

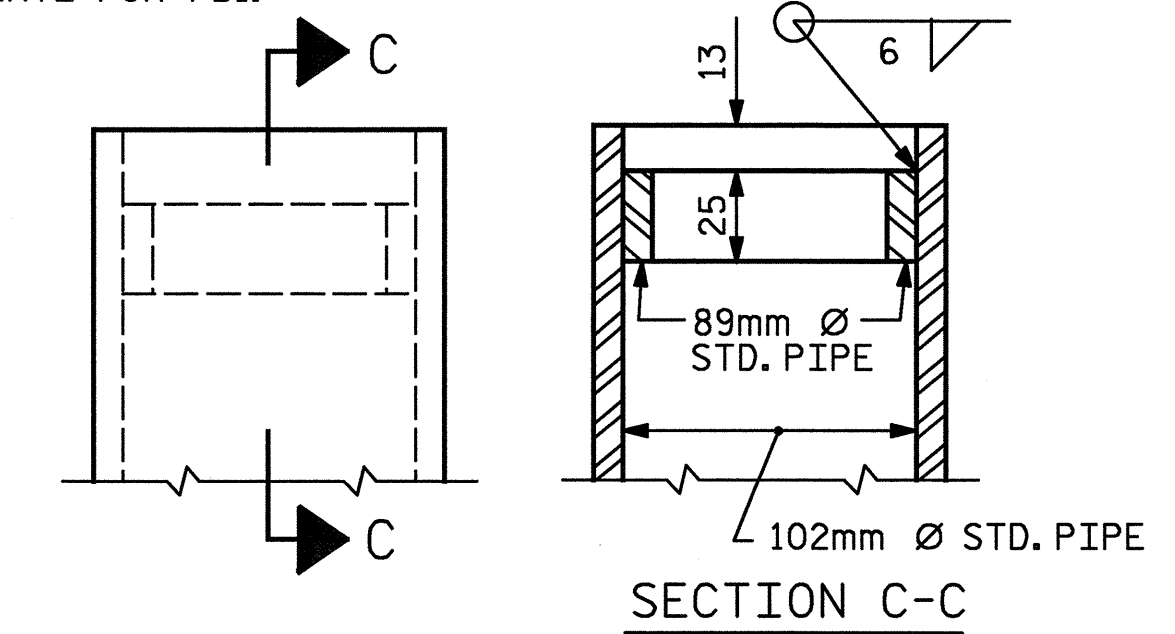
THE CONTRACTOR SHALL ADJUST THE BUILD-UPS AS NECESSARY TO INCORPORATE A MAXIMUM PERMISSIBLE VARIATION IN POT BEARING DEPTH OF 13mm. SEE SPECIAL PROVISIONS FOR POT BEARINGS.

THE CONTRACTOR MAY COMBINE THE MASONRY PLATE AND FILL PLATE FOR PB1.

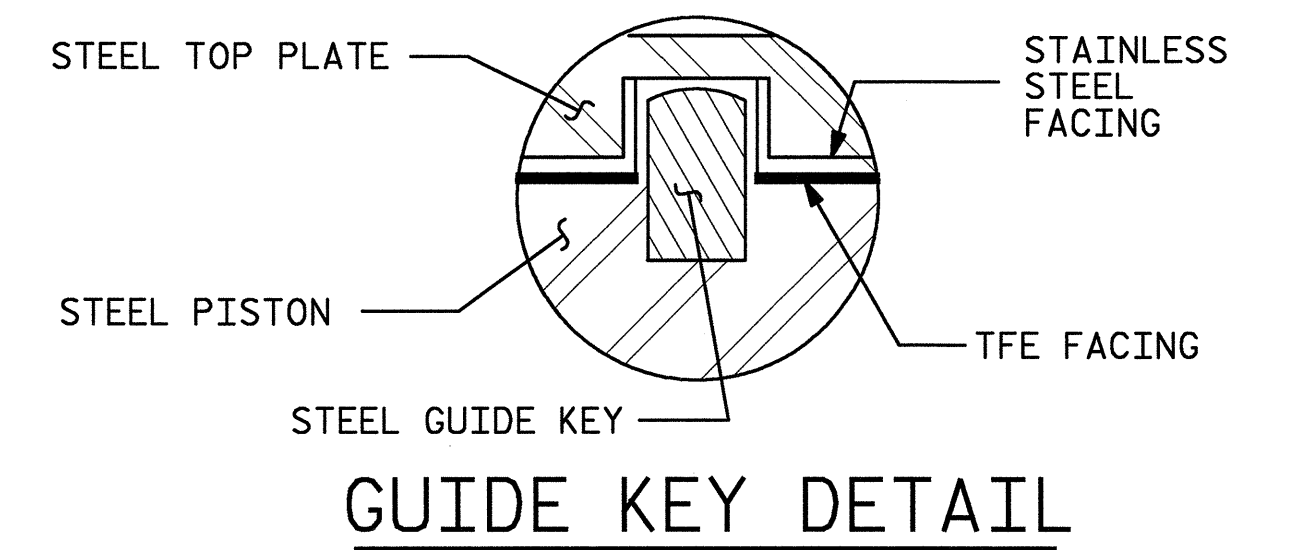


SOLE PLATE DETAILS

- ▲ NOTE: DIMENSIONS "W" AND "T" ARE TO BE DETERMINED BY THE MANUFACTURER.
- ◆ -1.4% @ EB 1
- ◆ -1.8% @ BT 1
- ◆ -2.2% @ EB 2



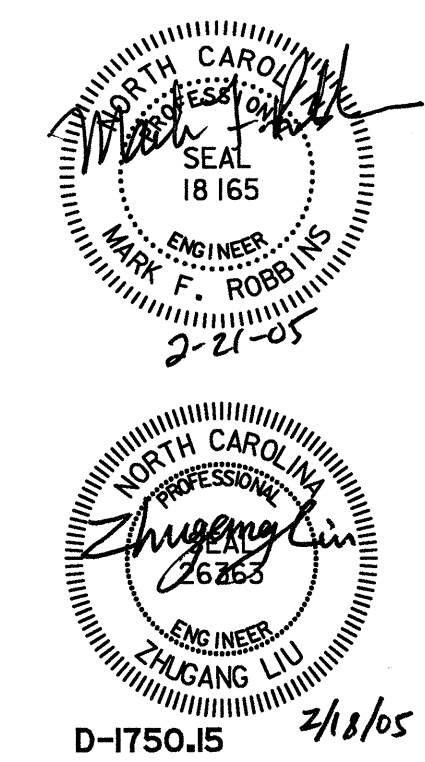
DETAIL "A"



GUIDE KEY DETAIL

PROJECT NO. R-2552C  
 JOHNSTON COUNTY  
 STATION: POT 148+08.446 -L2- =  
 POT 23+96.446 -Y4-

STATE OF NORTH CAROLINA DEPARTMENT OF TRANSPORTATION RALEIGH					
STANDARD POT BEARING DETAILS -RIGHT LANE-					
REVISIONS					SHEET NO.
NO.	BY:	DATE:	NO.	BY:	DATE:
1			3		
2			4		
					3-372 TOTAL SHEETS 431



TEMPERATURE AND END ROTATION SETTING DETAILS

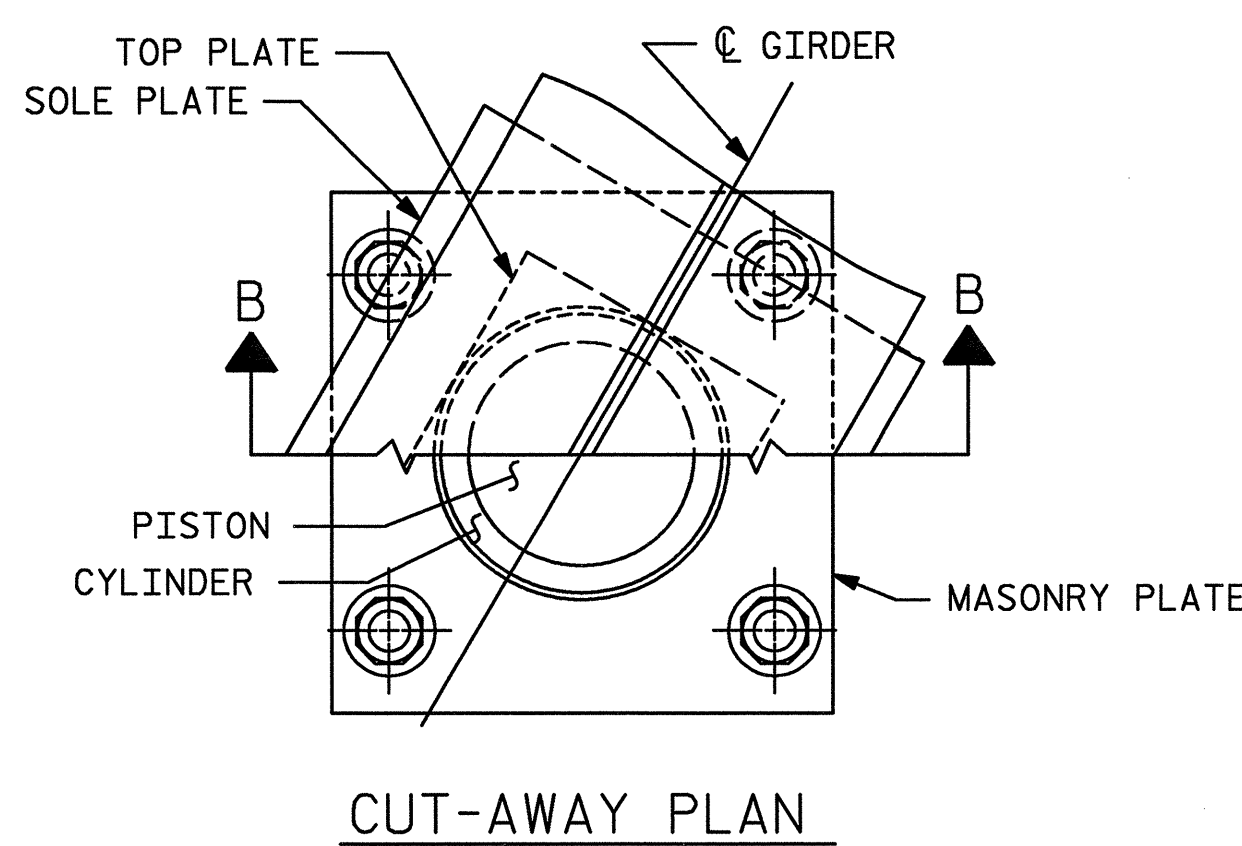
TABLE FOR PLATE SETTING DATA  
(EXPANSION POT BEARINGS)

TEMPERATURE AT TIME OF SETTING	0° C	16° C	32° C	*
END BENTS 1 & 2	-8	0	8	-7

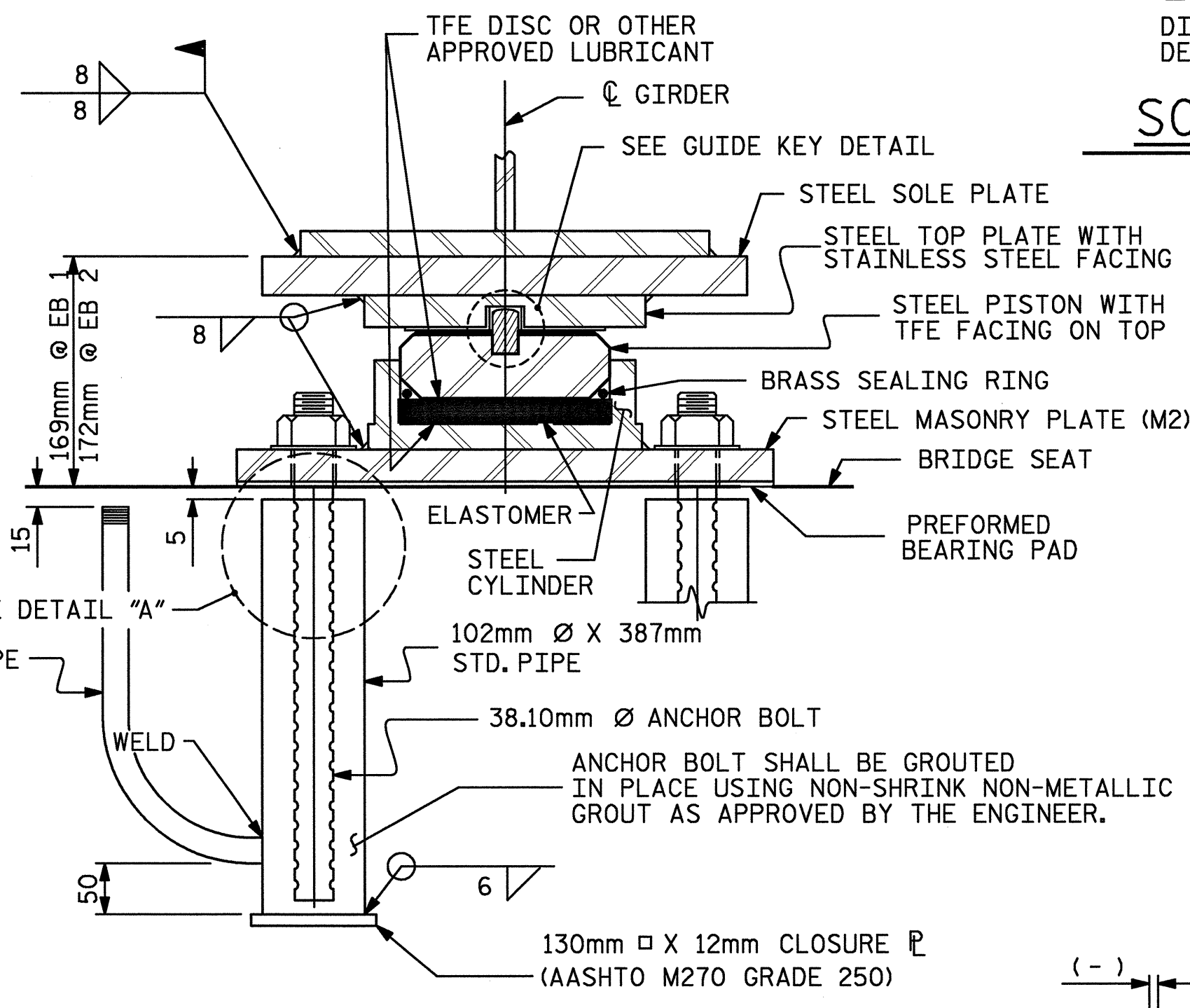
\*CORRECTION FOR END ROTATION DUE TO WEIGHT OF SLAB AND COMPOSITE DEAD LOAD.

TEMPERATURE SETTING DETAIL

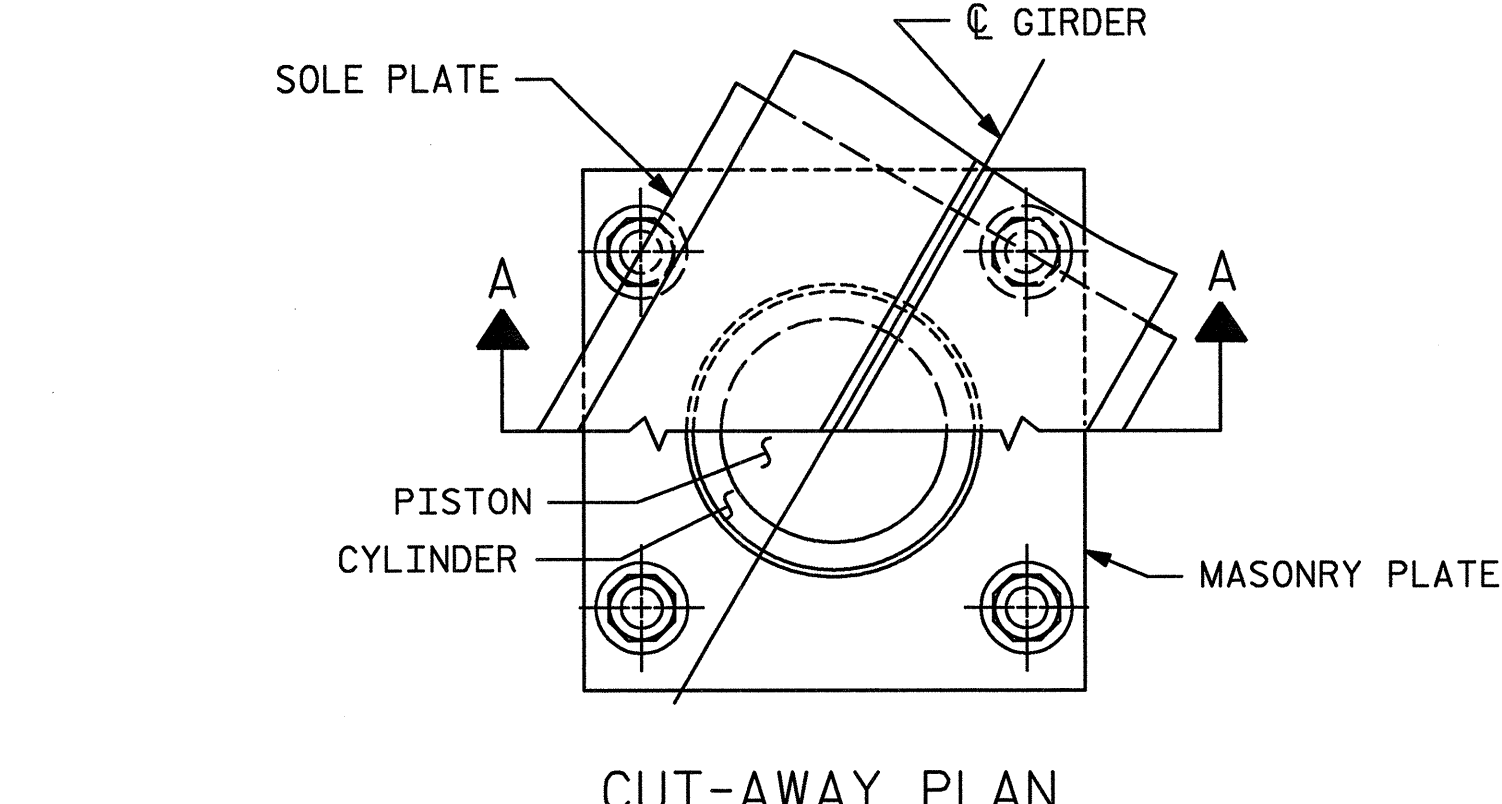
BEARING	LOCATION	VERTICAL LOAD (KN)			LATERAL LOAD (KN)	TOTAL MOVEMENT (mm)
		DEAD	LIVE	TOTAL		
PB1 (FIXED)	BENT 1	1460	590	2050	295	0
PB2 (EXP.)	END BENTS 1 & 2	400	300	700	80	28



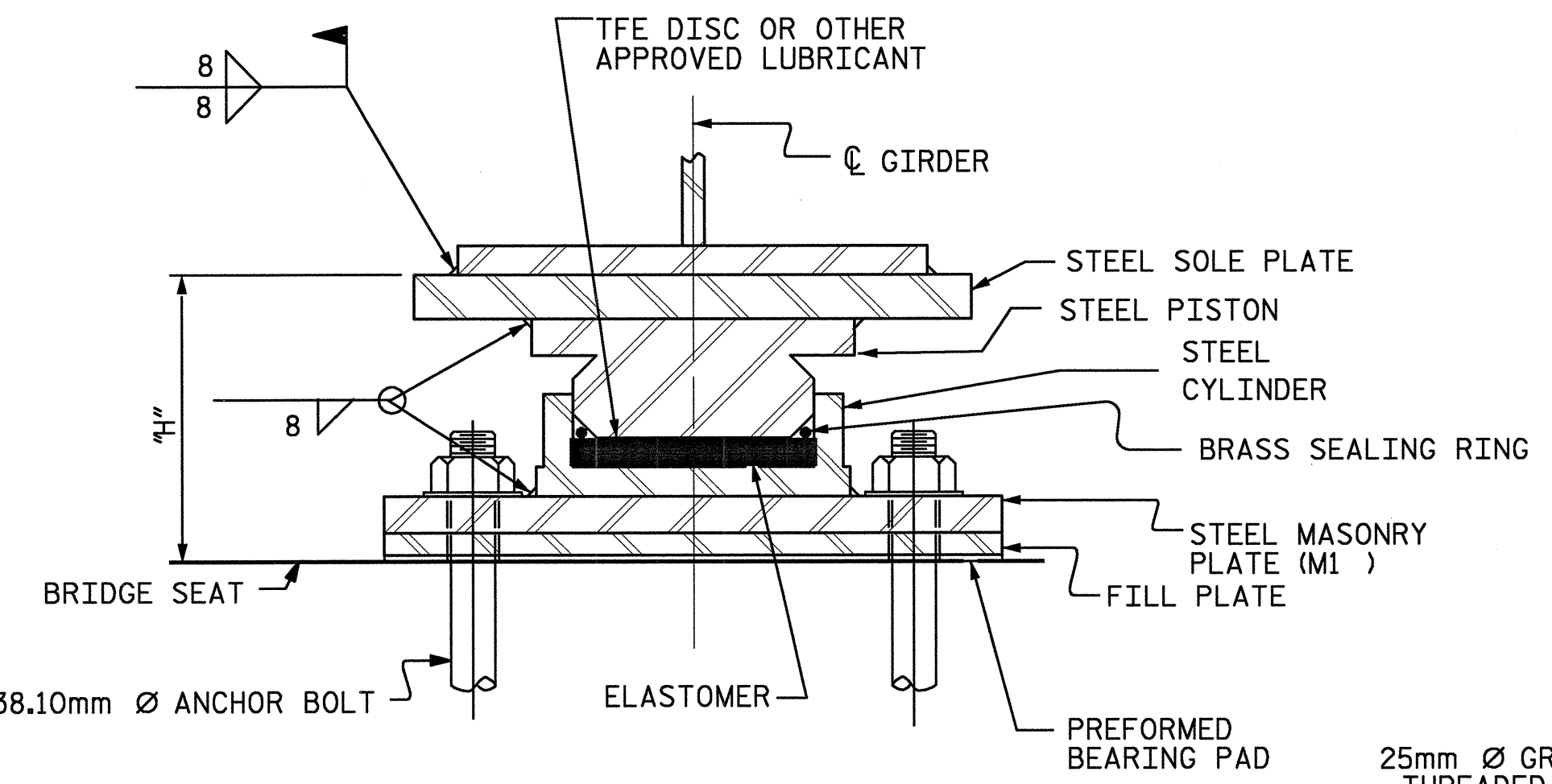
CUT-AWAY PLAN



SECTION B-B  
PB2, EXP. (12 REQ'D.)



CUT-AWAY PLAN

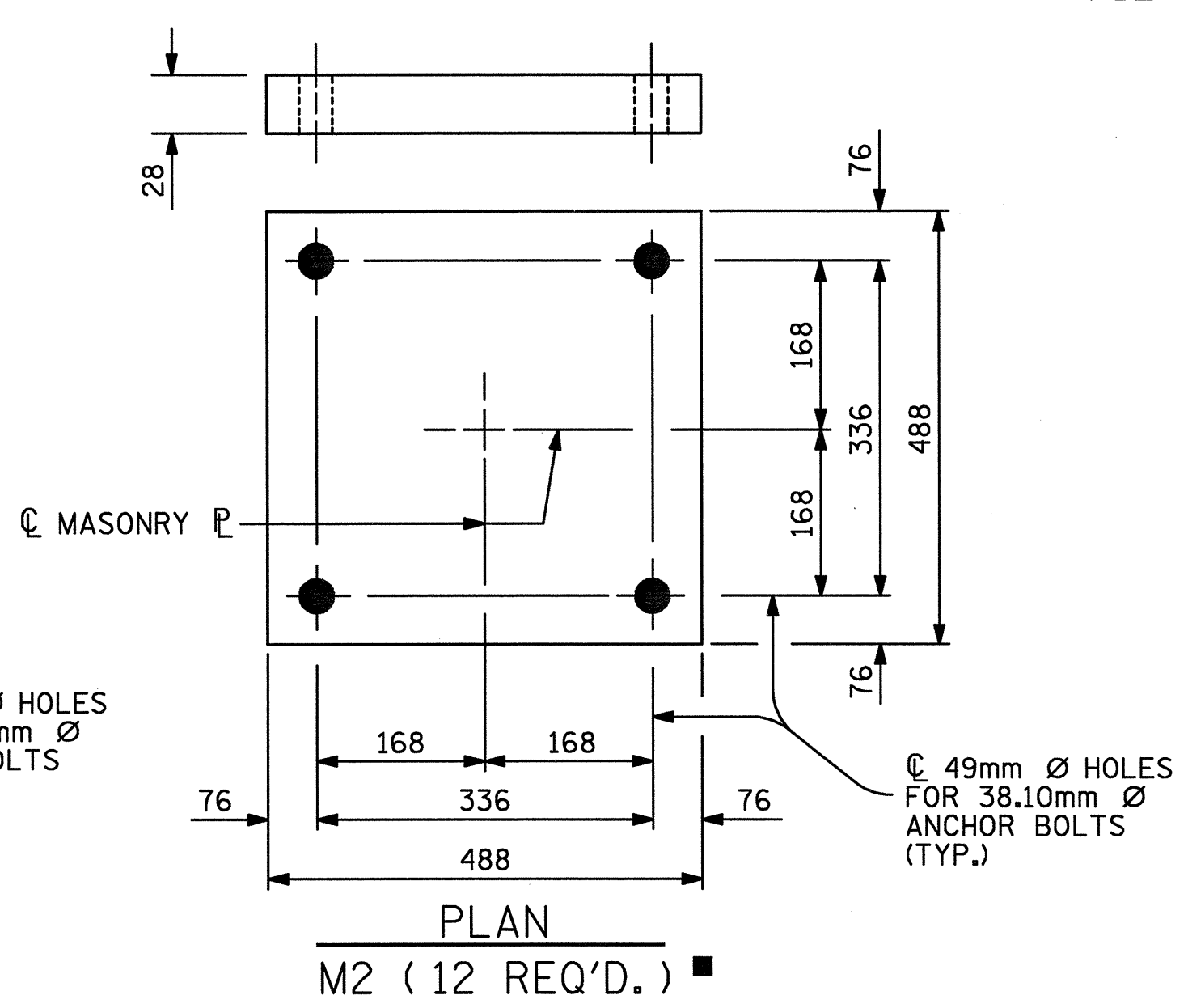


SECTION A-A  
PB1, FIXED (6 REQ'D.)

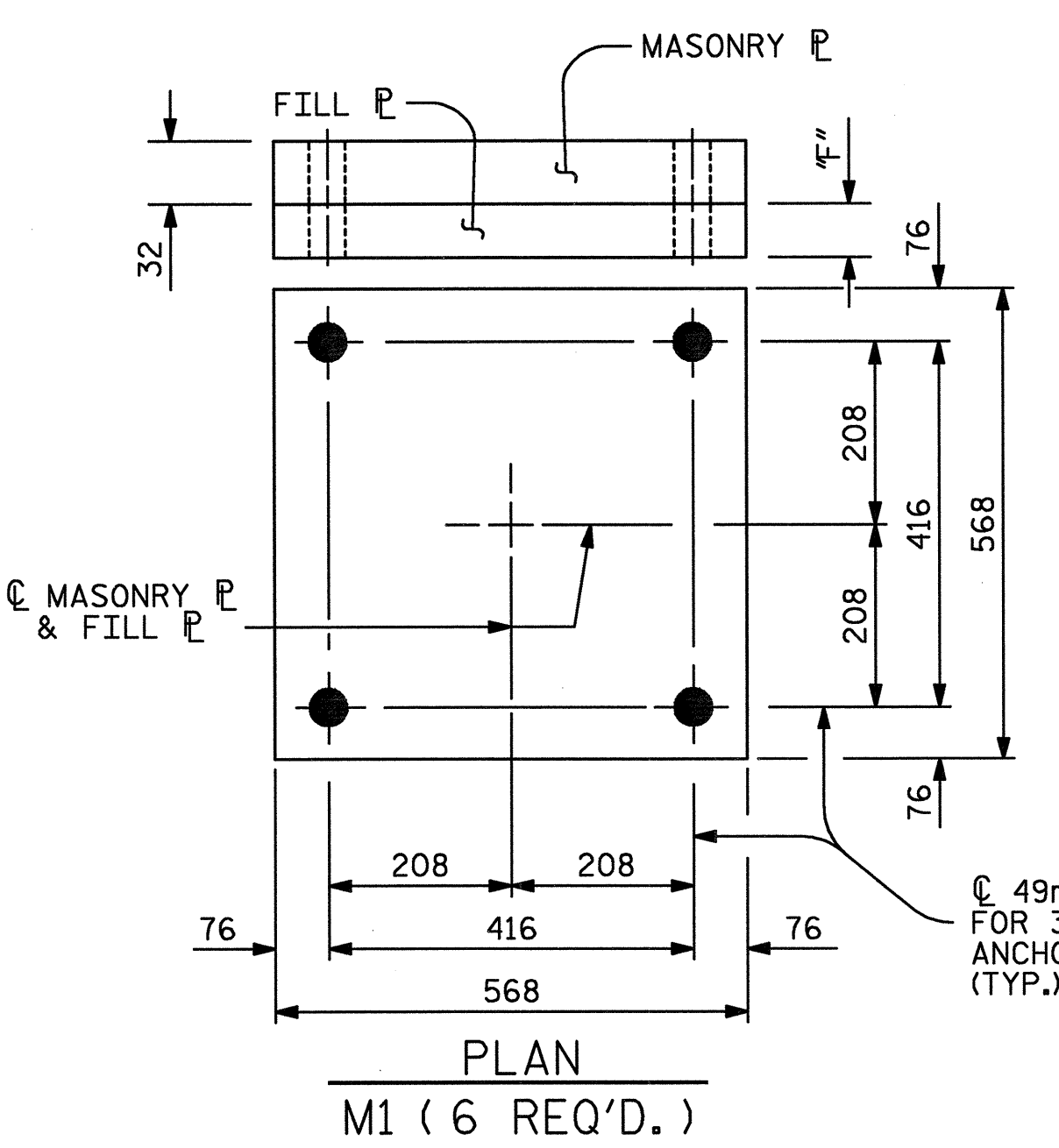
GDR.	1	2	3	4	5	6
"H"	192	190	186	182	177	171
"F"	21	19	15	11	6	0

■ PB2 BEARING SIZES WERE INCREASED FOR EASING FUTURE REPLACEMENT OF POT BEARINGS.

POT BEARING DETAILS



MASONRY AND FILL PLATE DETAILS



PLAN  
M1 (6 REQ'D.)

02/17/2005 04:55:52 PM n:\proj\3109-200\ustation\struct\final\3109-200-pot\_ldgn

ASSEMBLED BY : LGH	DATE : 11-04
CHECKED BY : TVR	DATE : 12-04
DRAWN BY : RWW 8/99	REV. 10/17/00 RWW/LES
CHECKED BY : LES 8/99	REV. 7/10/01 LES/RWW
	REV. 5/7/03 RWW/JTE