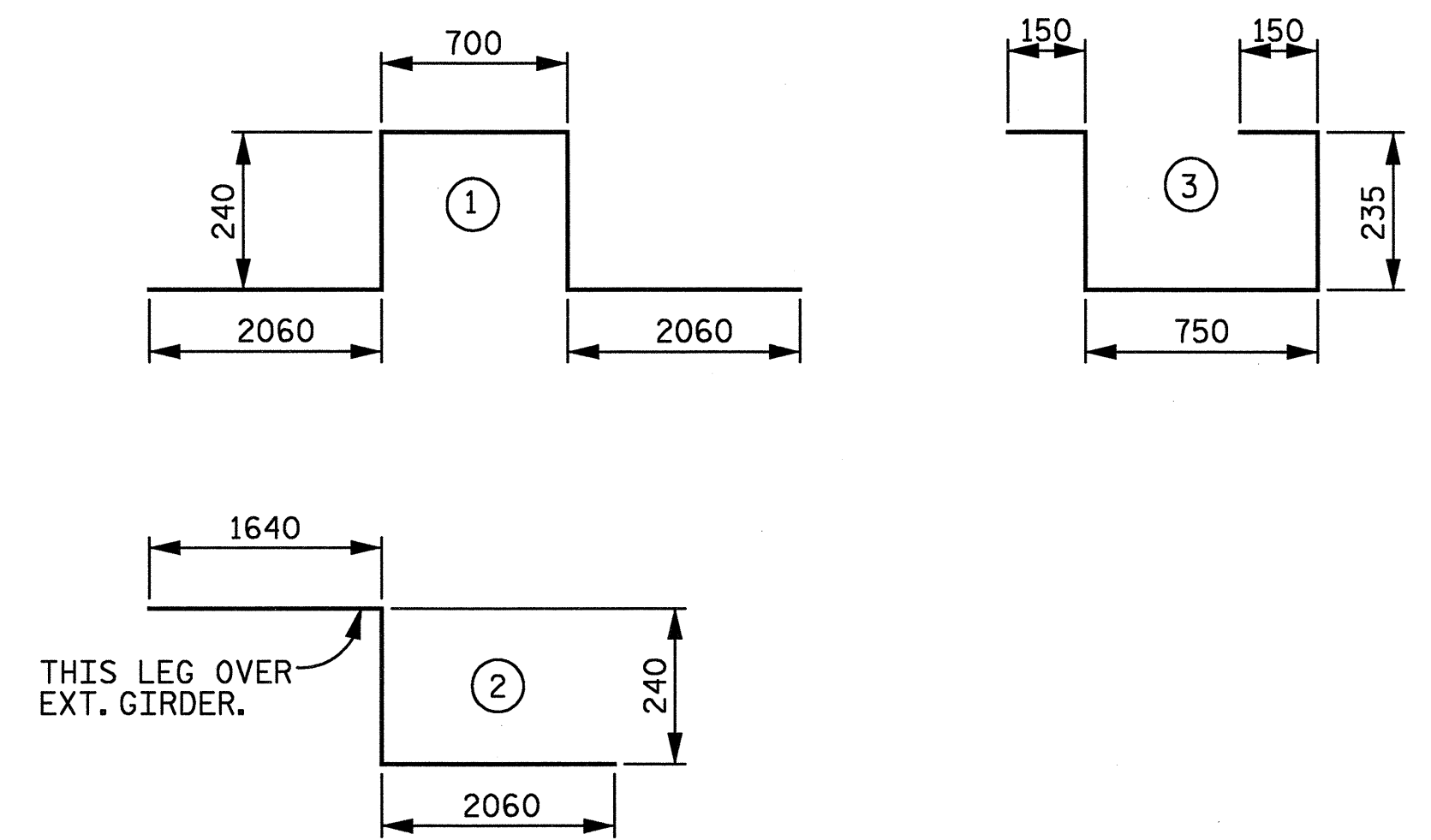


REINFORCING BAR SCHEDULE

MARK	NO.	SIZE	TYPE	LENGTH (mm)	MASS (kg)	MARK	NO.	SIZE	TYPE	LENGTH (mm)	MASS (kg)	MARK	NO.	SIZE	TYPE	LENGTH (mm)	MASS (kg)	MARK	NO.	SIZE	TYPE	LENGTH (mm)	MASS (kg)
* A1	417	#16	STR.	14,680	9,501	A61	2	#16	STR.	11,880	37	* A121	2	#16	STR.	9,900	31	A181	2	#16	STR.	6,660	21
A2	417	#16	STR.	14,680	9,501	A62	2	#16	STR.	11,600	36	* A122	2	#16	STR.	9,620	30	A182	2	#16	STR.	6,380	20
* A3	2	#16	STR.	14,500	45	A63	2	#16	STR.	11,300	35	* A123	2	#16	STR.	9,340	29	A183	2	#16	STR.	6,080	19
* A4	2	#16	STR.	14,220	44	A64	2	#16	STR.	11,020	34	* A124	2	#16	STR.	9,040	28	A184	2	#16	STR.	5,800	18
* A5	2	#16	STR.	13,940	43	A65	2	#16	STR.	10,740	33	* A125	2	#16	STR.	8,760	27	A185	2	#16	STR.	5,520	17
* A6	2	#16	STR.	13,660	42	A66	2	#16	STR.	10,460	32	* A126	2	#16	STR.	8,480	26	A186	2	#16	STR.	5,240	16
* A7	2	#16	STR.	13,380	42	A67	2	#16	STR.	10,180	32	* A127	2	#16	STR.	8,200	25	A187	2	#16	STR.	4,940	15
* A8	2	#16	STR.	13,080	41	A68	2	#16	STR.	9,900	31	* A128	2	#16	STR.	7,900	25	A188	2	#16	STR.	4,660	14
* A9	2	#16	STR.	12,800	40	A69	2	#16	STR.	9,620	30	* A129	2	#16	STR.	7,620	24	A189	2	#16	STR.	4,380	14
* A10	2	#16	STR.	12,520	39	A70	2	#16	STR.	9,340	29	* A130	2	#16	STR.	7,340	23	A190	2	#16	STR.	4,100	13
* A11	2	#16	STR.	12,240	38	A71	2	#16	STR.	9,060	28	* A131	2	#16	STR.	7,060	22	A191	2	#16	STR.	3,800	12
* A12	2	#16	STR.	11,960	37	A72	2	#16	STR.	8,780	27	* A132	2	#16	STR.	6,760	21	A192	2	#16	STR.	3,520	11
* A13	2	#16	STR.	11,680	36	A73	2	#16	STR.	8,500	26	* A133	2	#16	STR.	6,480	20	A193	2	#16	STR.	3,240	10
* A14	2	#16	STR.	11,400	35	A74	2	#16	STR.	8,200	25	* A134	2	#16	STR.	6,200	19	A194	2	#16	STR.	2,960	9
* A15	2	#16	STR.	11,120	35	A75	2	#16	STR.	7,920	25	* A135	2	#16	STR.	5,920	18	A195	2	#16	STR.	2,660	8
* A16	2	#16	STR.	10,800	34	A76	2	#16	STR.	7,640	24	* A136	2	#16	STR.	5,620	17	A196	2	#16	STR.	2,380	7
* A17	2	#16	STR.	10,540	33	A77	2	#16	STR.	7,360	23	* A137	2	#16	STR.	5,340	17	A197	2	#16	STR.	2,100	7
* A18	2	#16	STR.	10,260	32	A78	2	#16	STR.	7,080	22	* A138	2	#16	STR.	5,060	16	A198	2	#16	STR.	1,820	6
* A19	2	#16	STR.	9,980	31	A79	2	#16	STR.	6,800	21	* A139	2	#16	STR.	4,780	15	A199	2	#16	STR.	1,520	5
* A20	2	#16	STR.	9,700	30	A80	2	#16	STR.	6,520	20	* A140	2	#16	STR.	4,480	14	A200	2	#16	STR.	1,240	4
* A21	2	#16	STR.	9,420	29	A81	2	#16	STR.	6,240	19	* A141	2	#16	STR.	4,200	13	* A201	3	#16	STR.	900	4
* A22	2	#16	STR.	9,140	28	A82	2	#16	STR.	5,960	18	* A142	2	#16	STR.	3,920	12	A202	3	#16	STR.	1,100	5
* A23	2	#16	STR.	8,860	28	A83	2	#16	STR.	5,680	18	* A143	2	#16	STR.	3,640	11	* A203	3	#16	STR.	600	3
* A24	2	#16	STR.	8,580	27	A84	2	#16	STR.	5,400	17	* A144	2	#16	STR.	3,340	10	A204	3	#16	STR.	900	4
* A25	2	#16	STR.	8,300	26	A85	2	#16	STR.	5,120	16	* A145	2	#16	STR.	3,060	9	* A205	2	#16	STR.	300	1
* A26	2	#16	STR.	8,020	25	A86	2	#16	STR.	4,840	15	* A146	2	#16	STR.	2,780	9	A206	4	#16	STR.	800	5
* A27	2	#16	STR.	7,720	24	A87	2	#16	STR.	4,560	14	* A147	2	#16	STR.	2,500	8						
* A28	2	#16	STR.	7,440	23	A88	2	#16	STR.	4,280	13	* A148	2	#16	STR.	2,200	7	* B1	239	#16	STR.	13,340	4,948
* A29	2	#16	STR.	7,160	22	A89	2	#16	STR.	4,000	12	* A149	2	#16	STR.	1,920	6	* B2	198	#19	STR.	13,960	6,178
* A30	2	#16	STR.	6,880	21	A90	2	#16	STR.	3,720	12	* A150	2	#16	STR.	1,640	5	B3	358	#16	STR.	13,260	7,367
* A31	2	#16	STR.	6,600	20	A91	2	#16	STR.	3,440	11	* A151	2	#16	STR.	1,360	4						
* A32	2	#16	STR.	6,320	20	A92	2	#16	STR.	3,160	10	* A152	2	#16	STR.	1,060	3	* G1	4	#16	STR.	11,840	74
* A33	2	#16	STR.	6,040	19	A93	2	#16	STR.	2,880	9	A153	2	#16	STR.	14,640	45						
* A34	2	#16	STR.	5,760	18	A94	2	#16	STR.	2,600	8	A154	2	#16	STR.	14,360	45	* K1	24	#16	①	5,300	197
* A35	2	#16	STR.	5,480	17	A95	2	#16	STR.	2,320	7	A155	2	#16	STR.	14,060	44	* K2	12	#16	②	3,940	73
* A36	2	#16	STR.	5,200	16	A96	2	#16	STR.	2,040	6	A156	2	#16	STR.	13,780	43						
* A37	2	#16	STR.	4,920	15	A97	2	#16	STR.	1,760	5	A157	2	#16	STR.	13,500	42	* S1	100	#13	③	1,520	151
* A38	2	#16	STR.	4,640	14	A98	2	#16	STR.	1,480	5	A158	2	#16	STR.	13,220	41						
* A39	2	#16	STR.	4,360	14	* A99	3	#16	STR.	1,020	5	A159	2	#16	STR.	12,920	40						
* A40	2	#16	STR.	4,080	13	A100	3	#16	STR.	1,240	6	A160	2	#16	STR.	12,640	39						
* A41	2	#16	STR.	3,800	12	* A101	3	#16	STR.	740	3	A161	2	#16	STR.	12,360	38						
* A42	2	#16	STR.	3,520	11	A102	3	#16	STR.	1,080	5	A162	2	#16	STR.	12,080	37						
* A43	2	#16	STR.	3,240	10	* A103	2	#16	STR.	460	1	A163	2	#16	STR.	11,780	37						
* A44	2	#16	STR.	2,960	9	A104	4	#16	STR.	700	4	A164	2	#16	STR.	11,500	36						
* A45	2	#16	STR.	2,680	8	* A105	2	#16	STR.	14,460	45	A165	2	#16	STR.	11,220	35						
* A46	2	#16	STR.	2,400	7	* A106	2	#16	STR.	14,180	44	A166	2	#16	STR.	10,940	34						
* A47	2	#16	STR.	2,120	7	* A107	2	#16	STR.	13,900	43	A167	2	#16	STR.	10,640	33						
* A48	2	#16	STR.	1,840	6	* A108	2	#16	STR.	13,600	42	A168	2	#16	STR.	10,360	32						
* A49	2	#16	STR.	1,560	5	* A109	2	#16	STR.	13,320	41	A169	2	#16	STR.	10,080	31						
* A50	2	#16	STR.	1,280	4	* A110	2	#16	STR.	13,040	40	A170	2	#16	STR.	9,800	30						
A51	2	#16	STR.	14,700	46	* A111	2	#16	STR.	12,760	40	A171	2	#16	STR.	9,500	29						
A52	2	#16	STR.	14,420	45	* A112	2	#16	STR.	12,460	39	A172	2	#16	STR.	9,220	29						
A53	2	#16	STR.	14,140	44	* A113	2	#16	STR.	12,180	38	A173	2	#16	STR.	8,940	28						
A54	2	#16	STR.	13,860	43	* A114	2	#16	STR.	11,900	37	A174	2	#16	STR.	8,660	27						
A55	2	#16	STR.	13,560	42	* A115	2	#16	STR.	11,620	36	A175	2	#16	STR.	8,360	26						
A56	2	#16	STR.	13,280	41	* A116	2	#16	STR.	11,320	35	A176	2	#16	STR.	8,060	25						
A57	2	#16	STR.	13,000	40	* A117	2	#16	STR.	11,040	34	A177	2	#16	STR.	7,800	24						
A58	2	#16	STR.	12,720	39	* A118	2	#16	STR.	10,760	33	A178	2	#16	STR.	7,520	23						
A59	2	#16	STR.	12,440	39	* A119	2	#16	STR.	10,480	33	A179	2	#16	STR.	7,220	22						
A60	2	#16	STR.	12,160	38	* A120	2	#16	STR.	10,180	32	A180	2	#16	STR.	6,940	22						

* DENOTES EPOXY COATED REINFORCING

BAR TYPES



ALL BAR DIMENSIONS ARE OUT TO OUT.

PROJECT NO. R-2552C

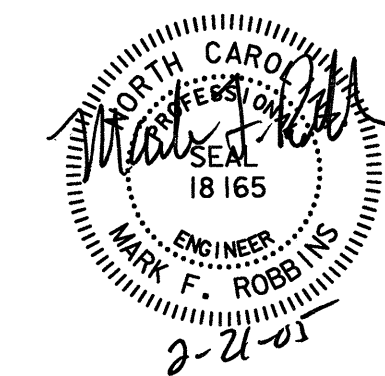
JOHNSTON COUNTY

STATION: POT 148+08.446 -L2- = POT 23+96.446 -Y4-

SHEET 1 OF 2

STATE OF NORTH CAROLINA
DEPARTMENT OF TRANSPORTATION
RALEIGH
STANDARD
SUPERSTRUCTURE
BILL OF MATERIAL
-RIGHT LANE-

REVISIONS						SHEET NO.
NO.	BY:	DATE:	NO.	BY:	DATE:	5-37e
1			3			TOTAL
2			4			431



D-1750.21

STD. NO. BOM1SM

02/17/2005 04:55:48 PM n:\proj\3109-200\ustation\str\uct\Final\3109-200-ss_bom-1.dgn

ASSEMBLED BY : WBS, LGH DATE : 11-04
CHECKED BY : ZAL, ARH DATE : 01-05
DRAWN BY : JMB 5/87 REV. 5/16/97 EEM/RGW
CHECKED BY : SJD 9/87