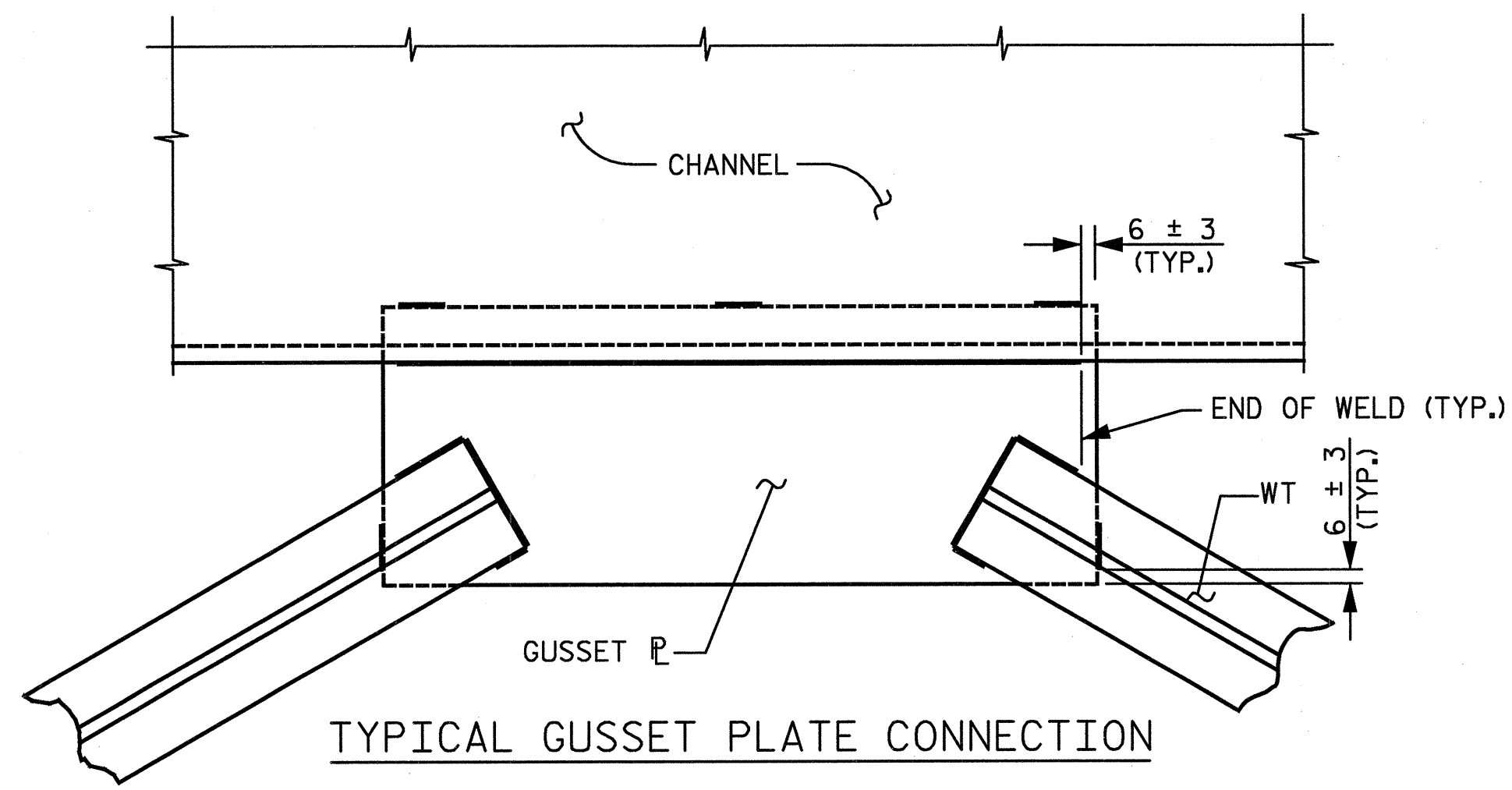
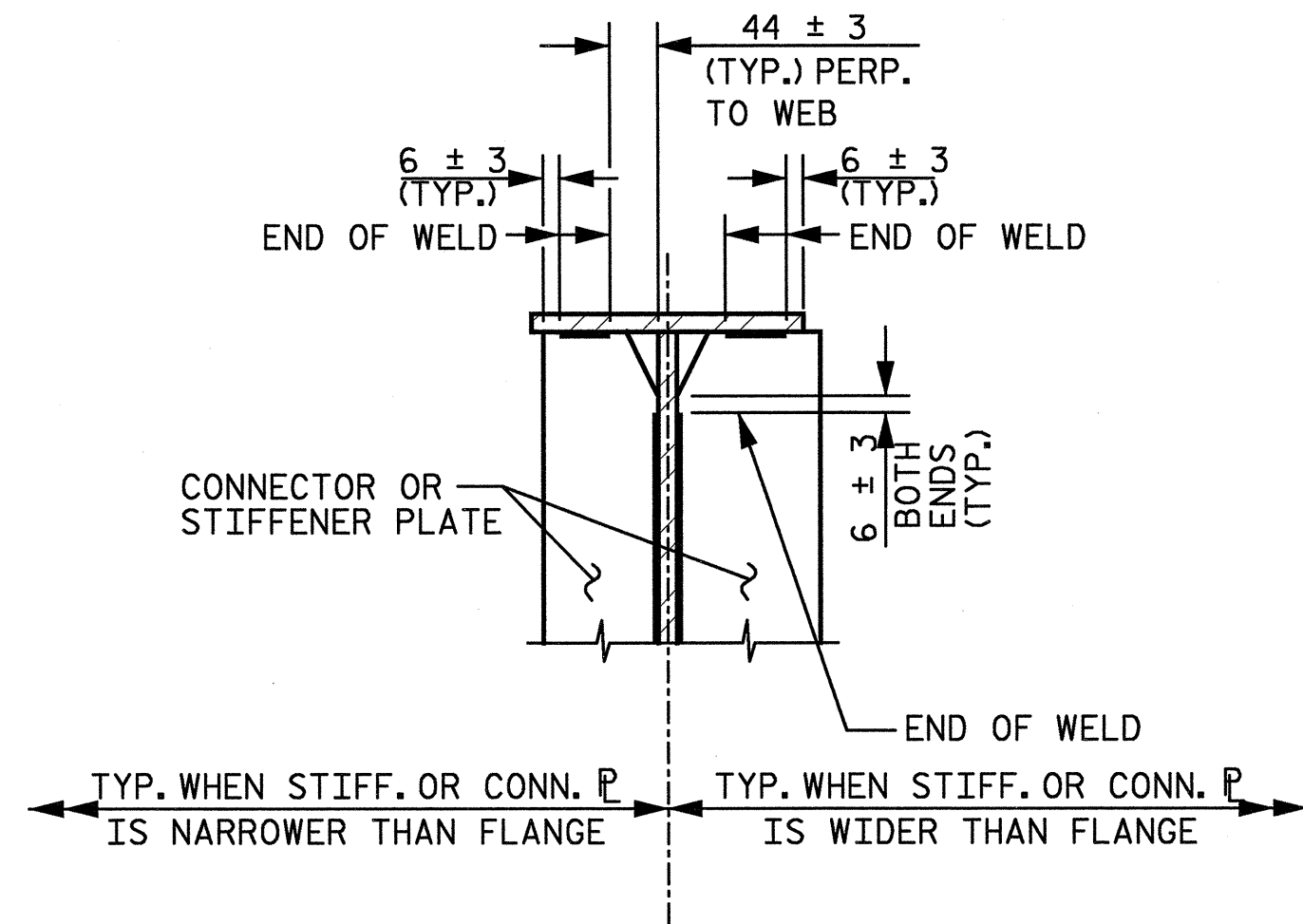


02/23/2005 10:30:49 AM n:\proj\3109-300\ustation\struct\Final\3109-300_str-steel_detail_2.dgn david.lowery

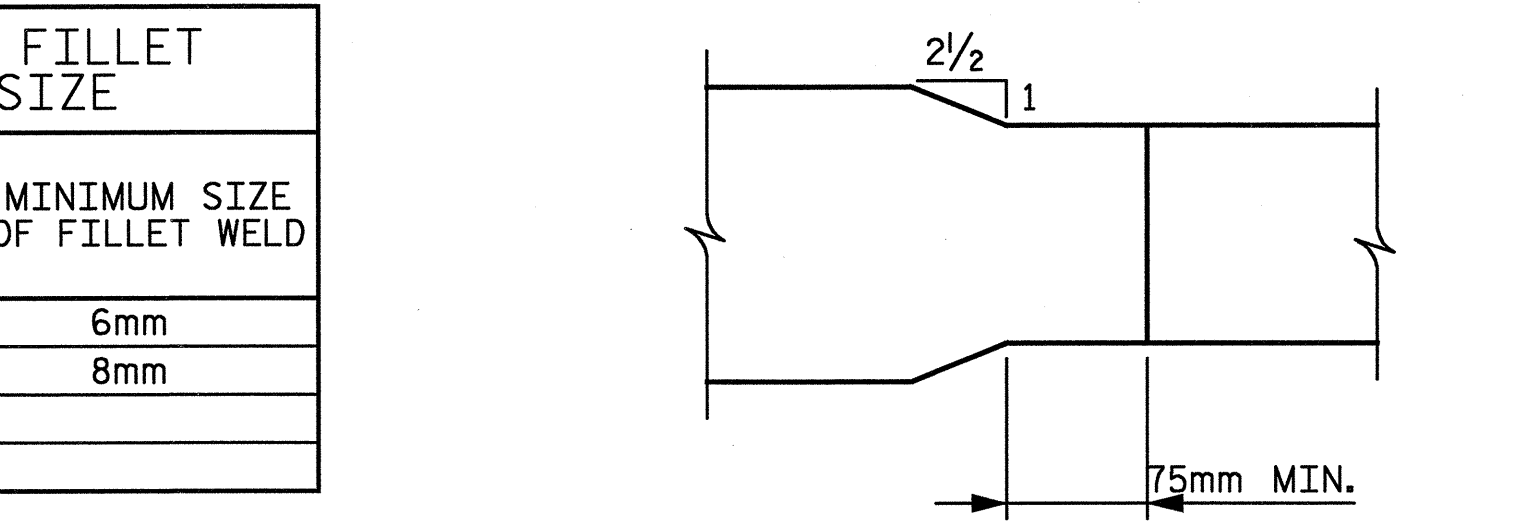
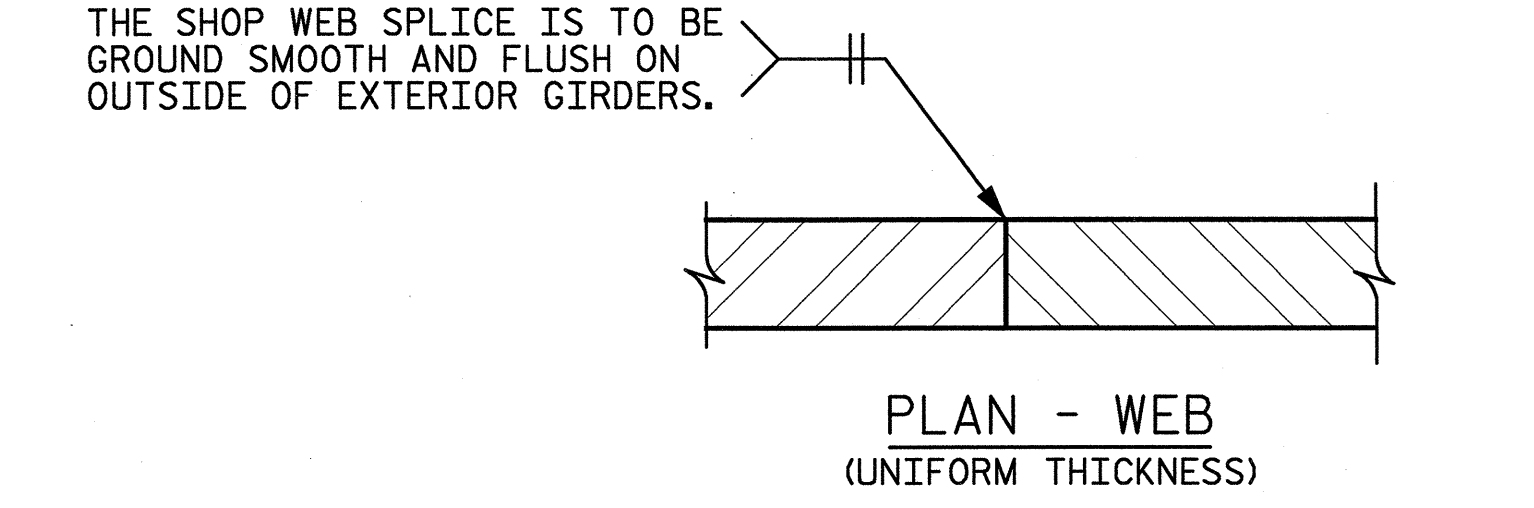
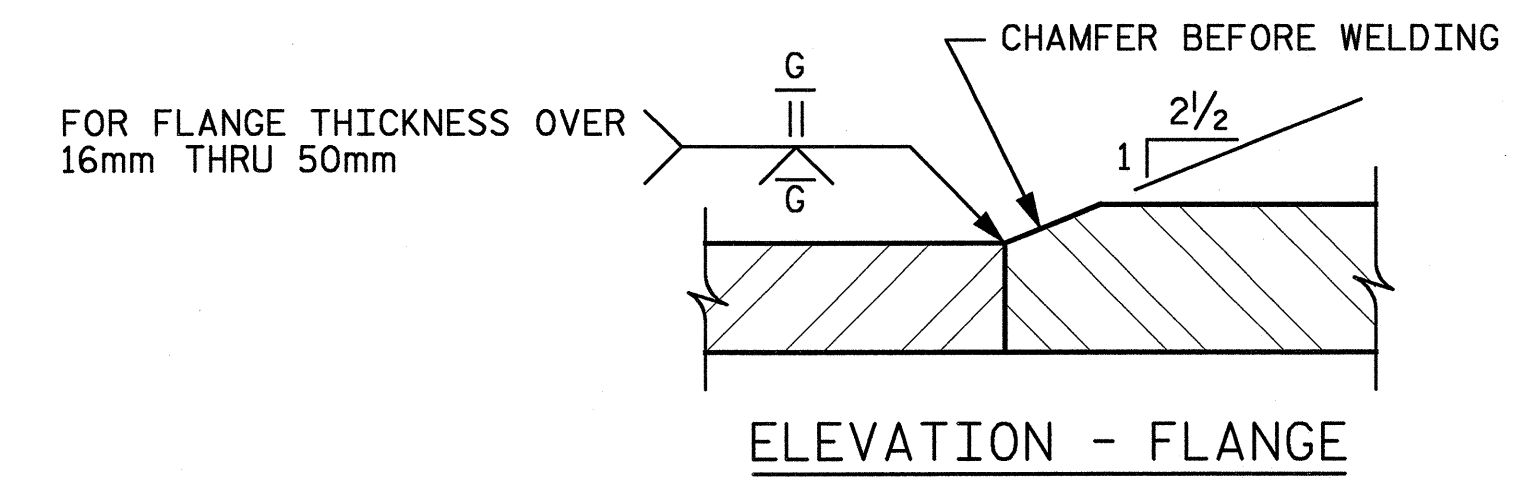


TYPICAL GUSSET PLATE CONNECTION



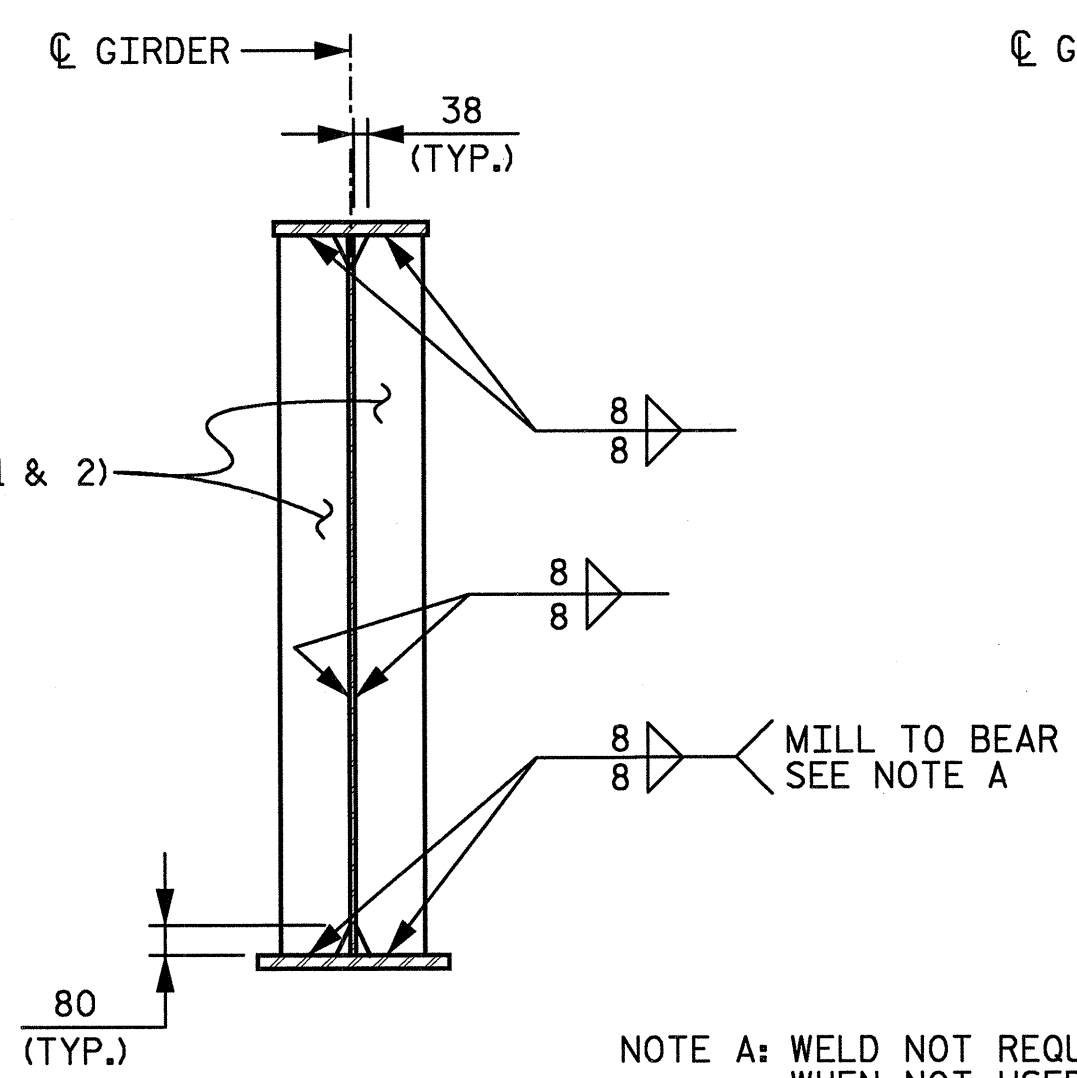
TYPICAL STIFFENER OR CONNECTOR PLATE CONNECTIONS

WELD TERMINATION DETAILS

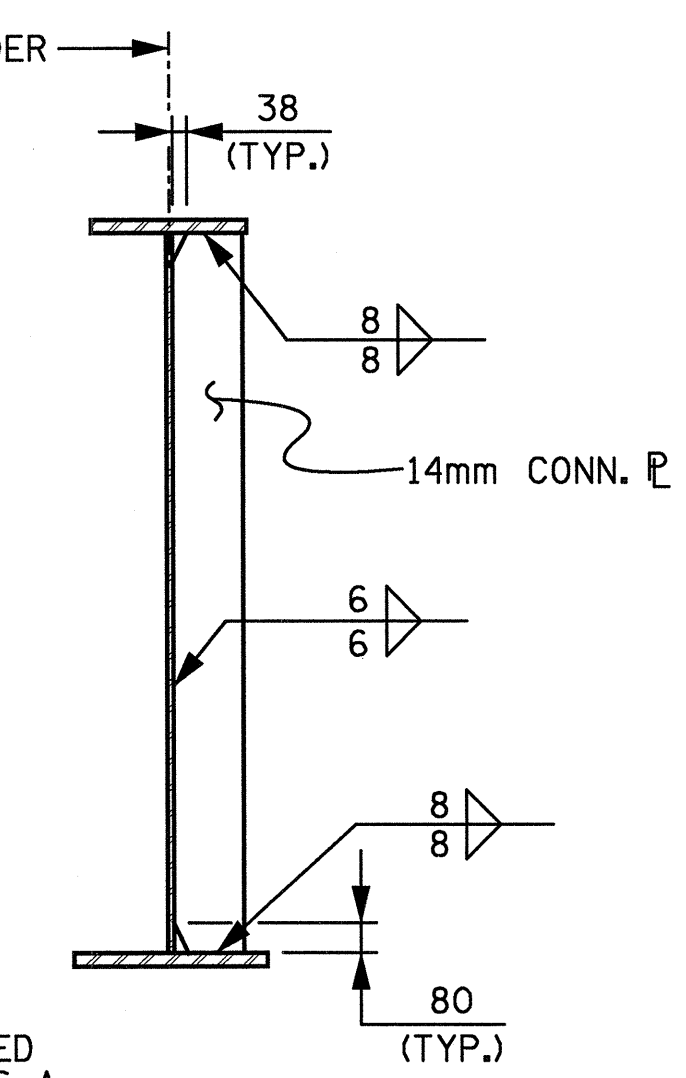


MINIMUM FILLET WELD SIZE	
BASE METAL THICKNESS OF THICKER PART JOINED (T)	MINIMUM SIZE OF FILLET WELD
T ≤ 19mm	6mm
T > 19mm	8mm

SHOP SPLICE DETAILS

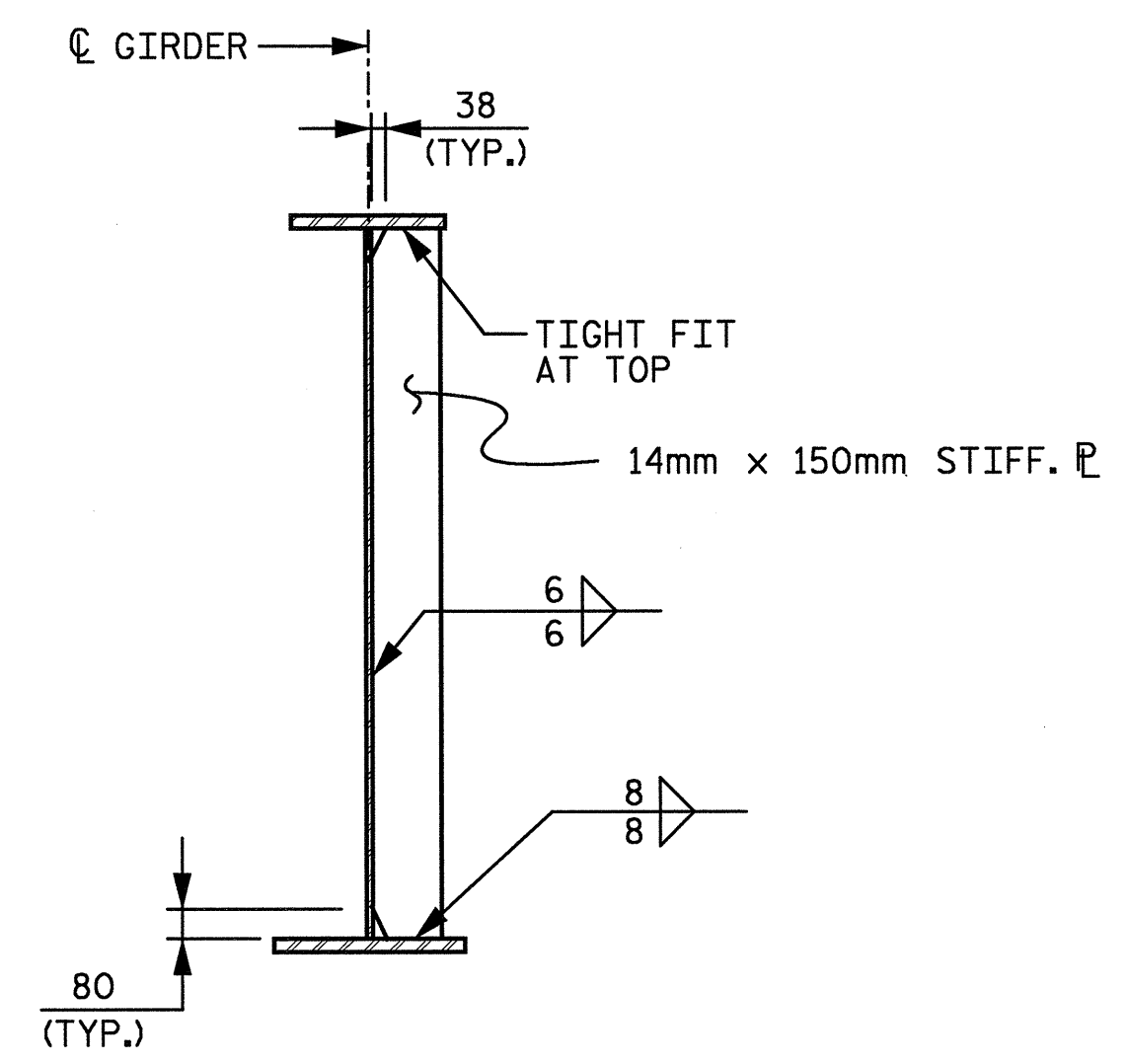


BEARING STIFFENER



CONNECTOR P DETAIL

NOTE A: WELD NOT REQUIRED WHEN NOT USED AS A CONNECTOR PLATE



INTERMEDIATE STIFFENERS

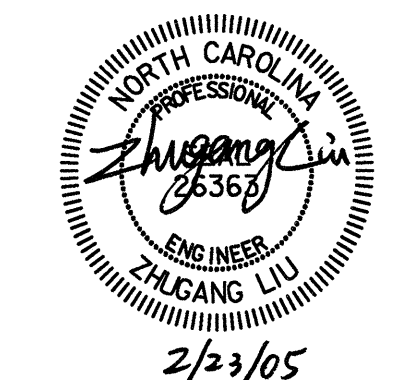
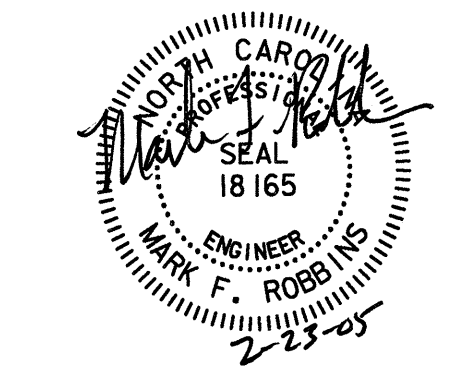
■ INCREASE BEARING STIFFENER WIDTH AS REQUIRED WHEN USED AS A CROSSFRAME CONNECTOR PLATE. INCREASE BEARING STIFFENER THICKNESS AS REQUIRED TO MAINTAIN WIDTH TO THICKNESS RATIO NO LARGER THAN 9.5.

PROJECT No R-252C
 JOHNSTON COUNTY
 STATION: POS 16+52.599 -Y4- =
 POC 9+28.021 -FLYOVER-

SHEET 2 OF 2

NO.	BY	DATE
1		
2		

STATE OF NORTH CAROLINA
 DEPARTMENT OF TRANSPORTATION
 RALEIGH
 STRUCTURAL STEEL DETAILS



W RALPH WHITEHEAD ASSOCIATES, INC.
 CONSULTING ENGINEERS
 P.O. BOX 35624 CHARLOTTE, N.C. 28235
 DRAWN BY WBS, LGH DATE 9-04 DWG. NO.
 CHECKED BY TVR DATE 12-04 D-1748.12

SHEET NO. 5-4-07
 TOTAL SHEETS 4/31