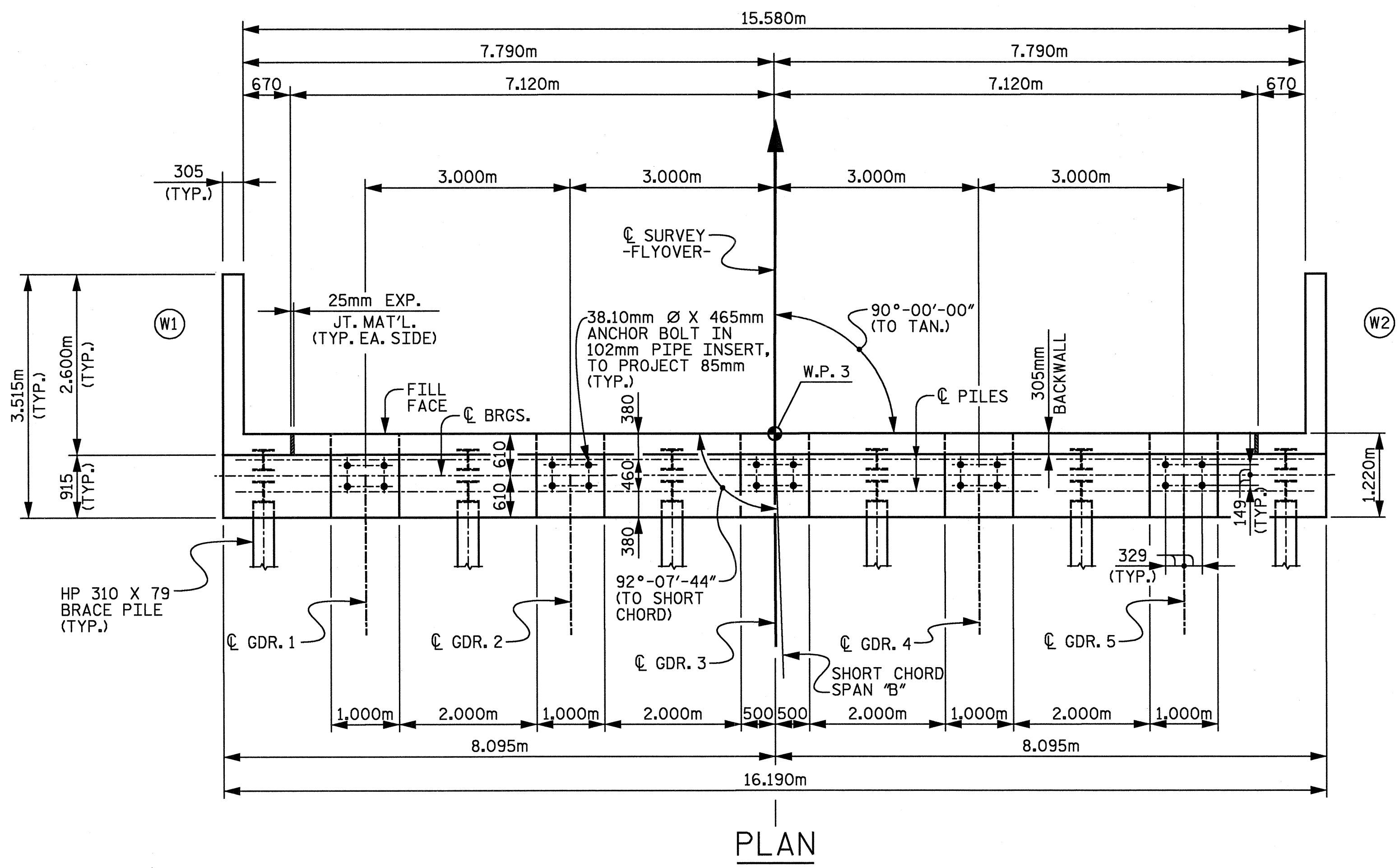


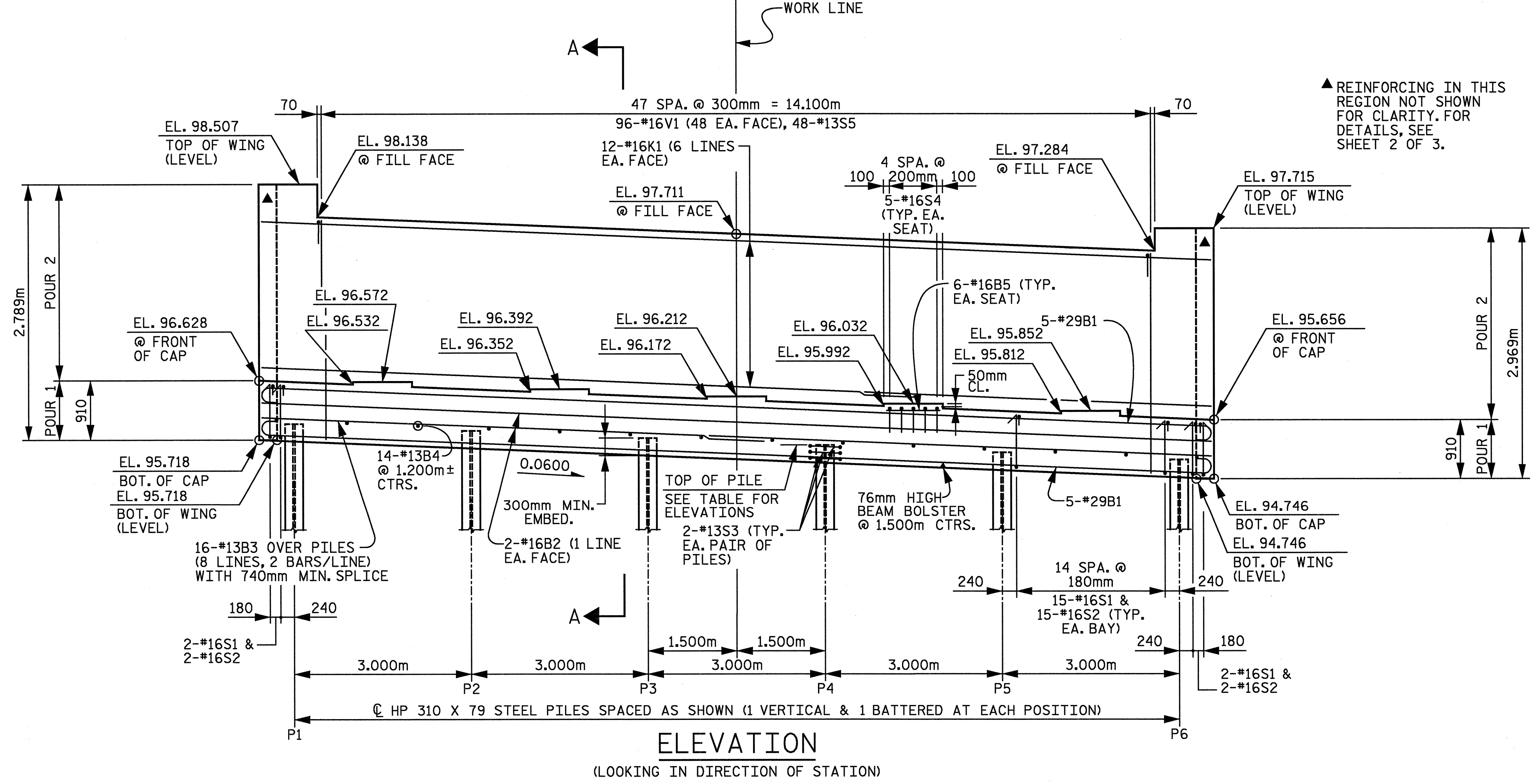
02/23/2005 10:49:25 AM n:\proj\3109-300\station\struct\final\3109-300_end_bent_2a.dgn david.lowe

NOTES:

- STIRRUPS IN CAP MAY BE SHIFTED AS NECESSARY TO CLEAR PIPE INSERTS.
- FOR EPOXY PROTECTIVE COATING, SEE SPECIAL PROVISIONS.
- BACKWALL SHALL BE PLACED BEFORE APPLYING THE EPOXY PROTECTIVE COATING.
- THE TOP SURFACE AREAS OF THE END BENT CAP SHALL BE CURED IN ACCORDANCE WITH THE STANDARD SPECIFICATIONS EXCEPT THAT THE MEMBRANE CURING COMPOUND METHOD SHALL NOT BE USED.
- THE TOP SURFACE OF THE CAP EXCEPT THE BRIDGE SEAT BUILDUPS SHALL BE SLOPED TRANSVERSELY FROM THE FILL FACE TO THE FRONT FACE AT THE RATE OF 2%.
- FOR PIPE INSERT DETAILS, SEE "POT BEARING DETAILS" SHEETS.
- PILES SHALL BE DRIVEN TO A MINIMUM BEARING CAPACITY OF 530 KN EACH.
- WHEN DRIVING PILES, THE MAXIMUM BLOW COUNT SHALL NOT BE EXCEEDED.
- FOR OTHER NOTES, SEE "GENERAL DRAWING LOCATION SKETCH, GENERAL NOTES AND TOTAL BILL OF MATERIAL" SHEET.
- THE CONTRACTOR SHALL PROVIDE FOR INSTALLATION OF THE 102mm Ø DRAIN PIPE THROUGH THE WING WALLS AS REQUIRED FOR REINFORCED BRIDGE APPROACH FILLS, SEE ROADWAY PLANS. REINFORCING STEEL IN THE WING WALLS MAY BE SHIFTED AS NECESSARY TO CLEAR THE DRAIN PIPE.



PLAN

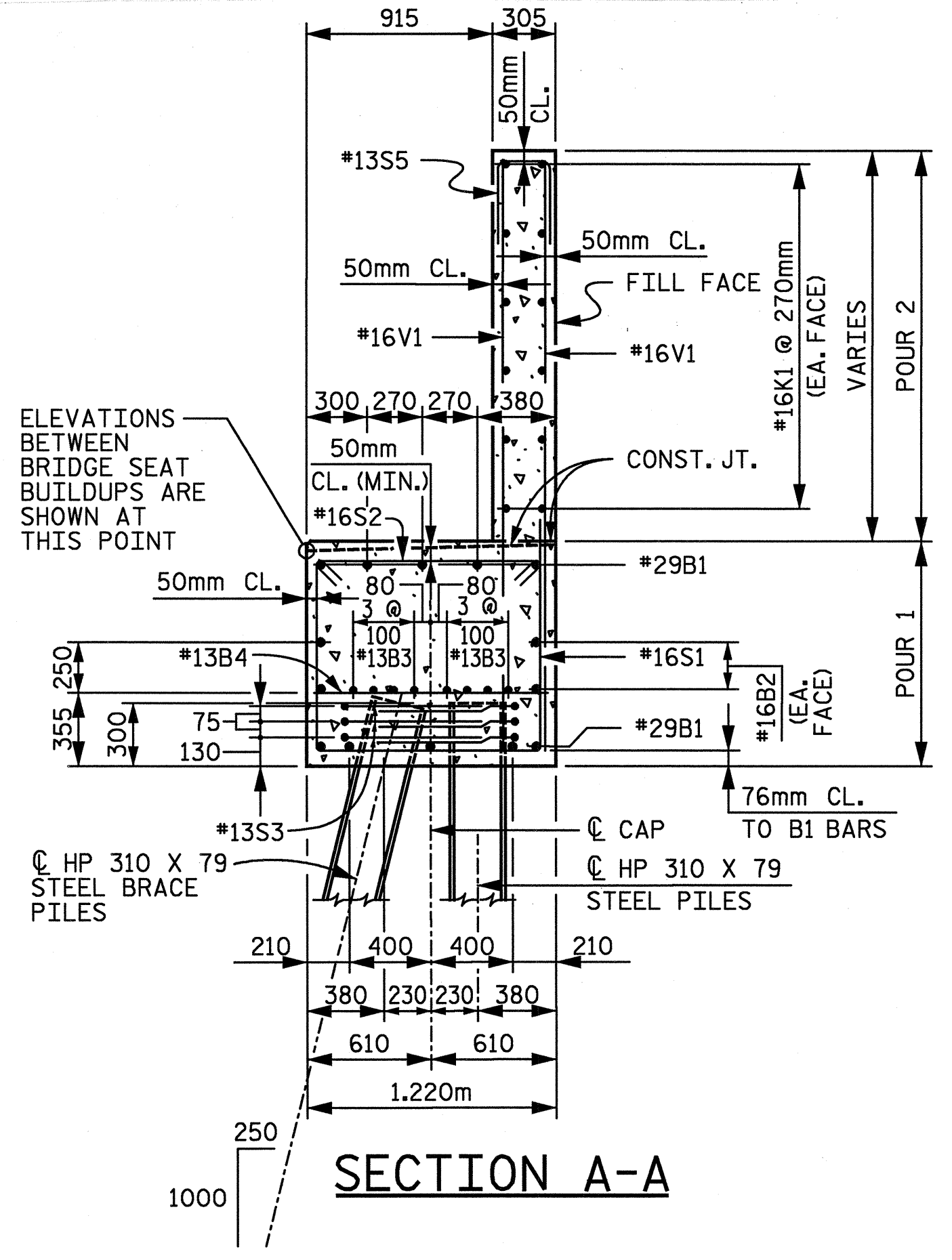


ELEVATION

(LOOKING IN DIRECTION OF STATION)

▲ REINFORCING IN THIS REGION NOT SHOWN FOR CLARITY, FOR DETAILS, SEE SHEET 2 OF 3.

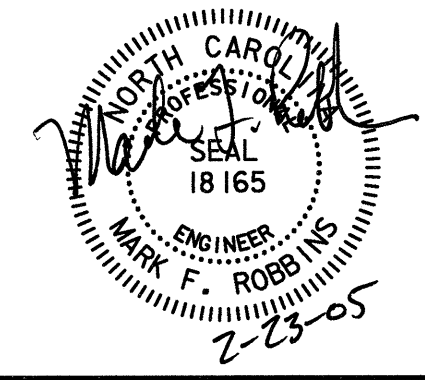
TOP OF PILE ELEVATIONS	
PILE	ELEVATION
P1	95.991
P2	95.811
P3	95.631
P4	95.451
P5	95.271
P6	95.091



SECTION A-A

PROJECT No. R-252C
 JOHNSTON COUNTY
 STATION: POS 16+52.599 -Y4- =
 POC 9+28.021 -FLYOVER-

SHEET 1 OF 3



RALPH WHITEHEAD ASSOCIATES, INC.
 CONSULTING ENGINEERS
 P.O. BOX 35624 CHARLOTTE, N.C. 28235

DRAWN BY ARH DATE 12-04
 CHECKED BY TBQ DATE 01-05

REVISIONS	
NO.	DATE
1	
2	

STATE OF NORTH CAROLINA
 DEPARTMENT OF TRANSPORTATION
 RALEIGH

END BENT 2

SHEET NO. 5-423
 TOTAL SHEETS 431