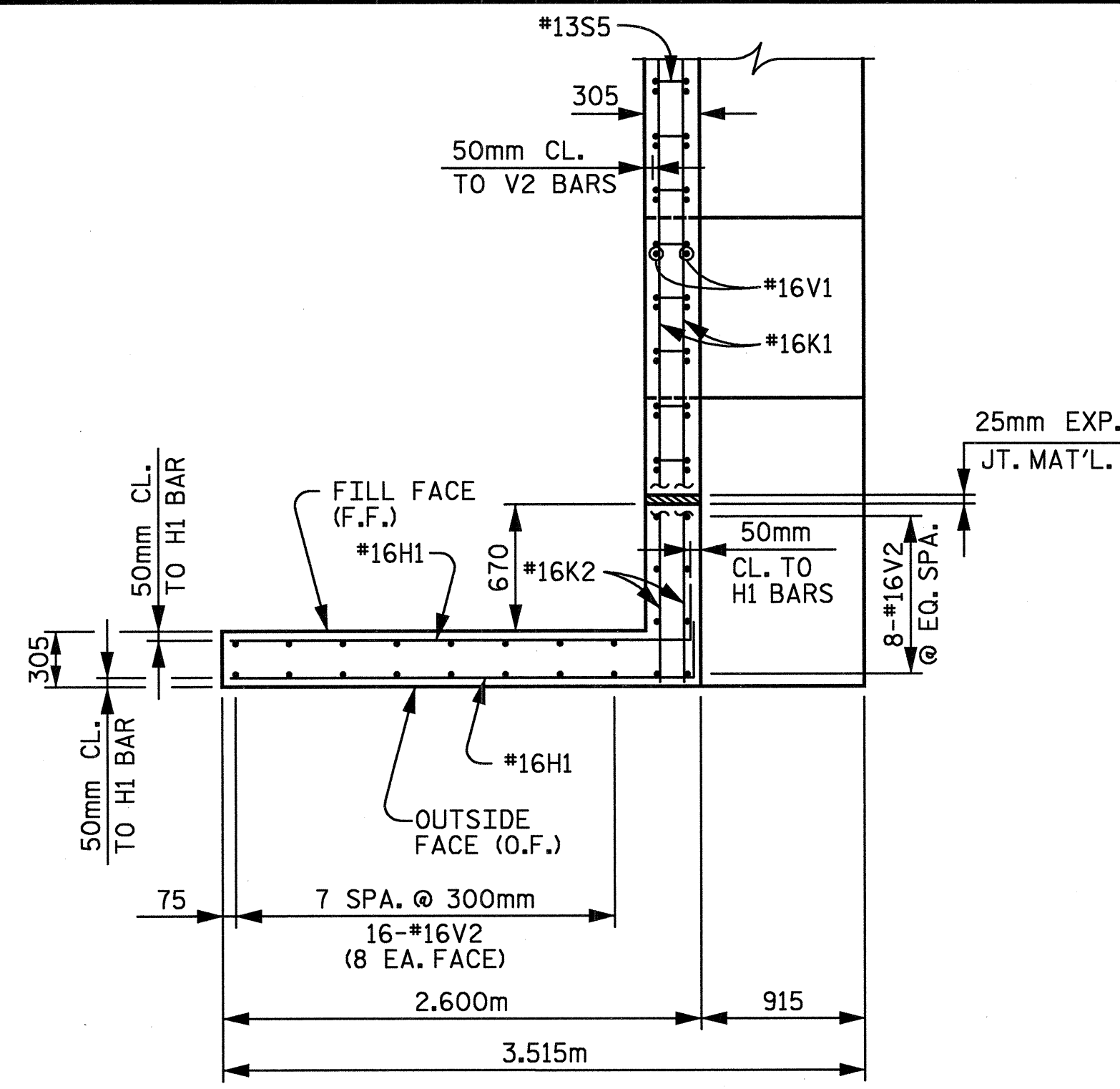
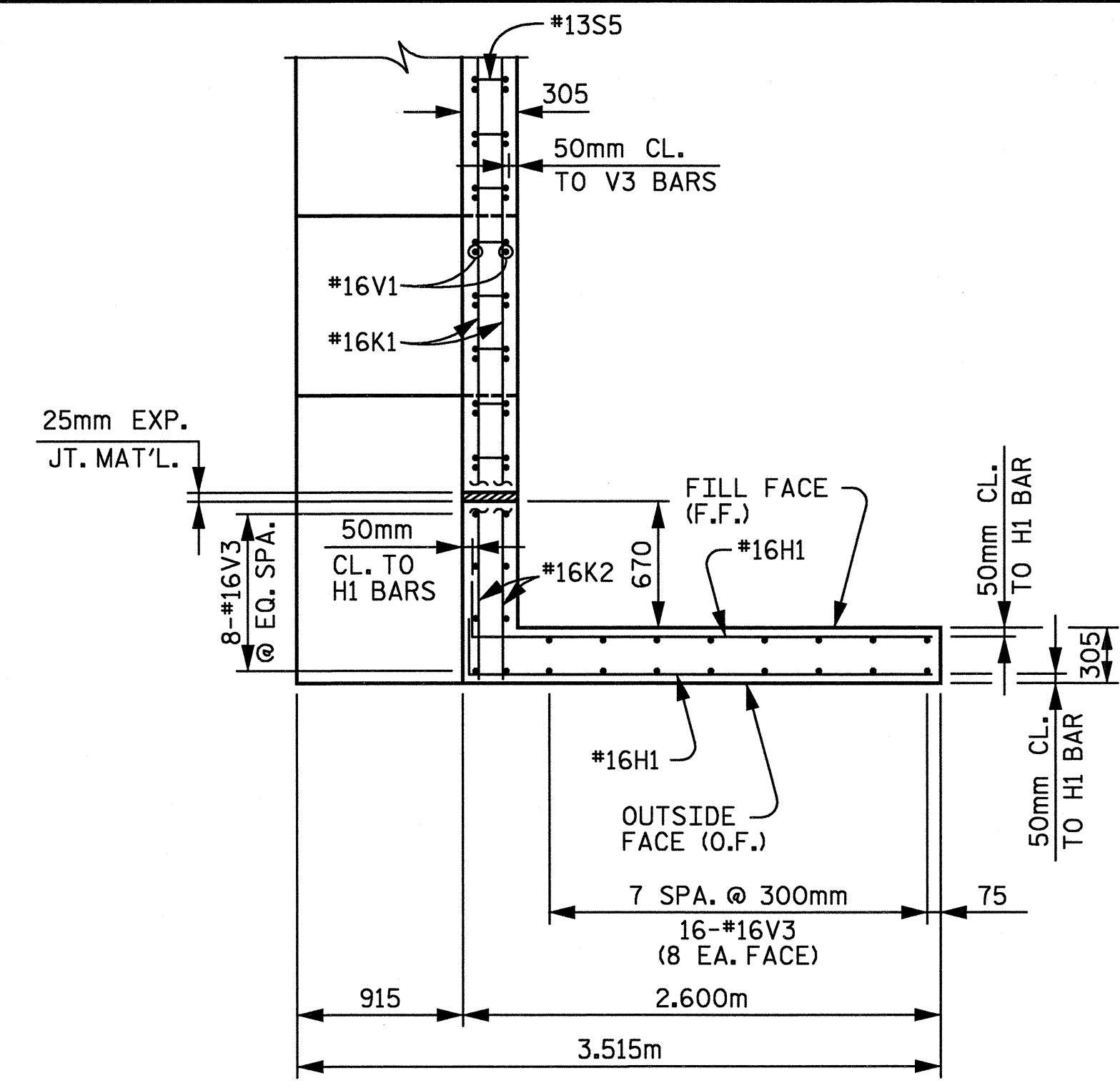


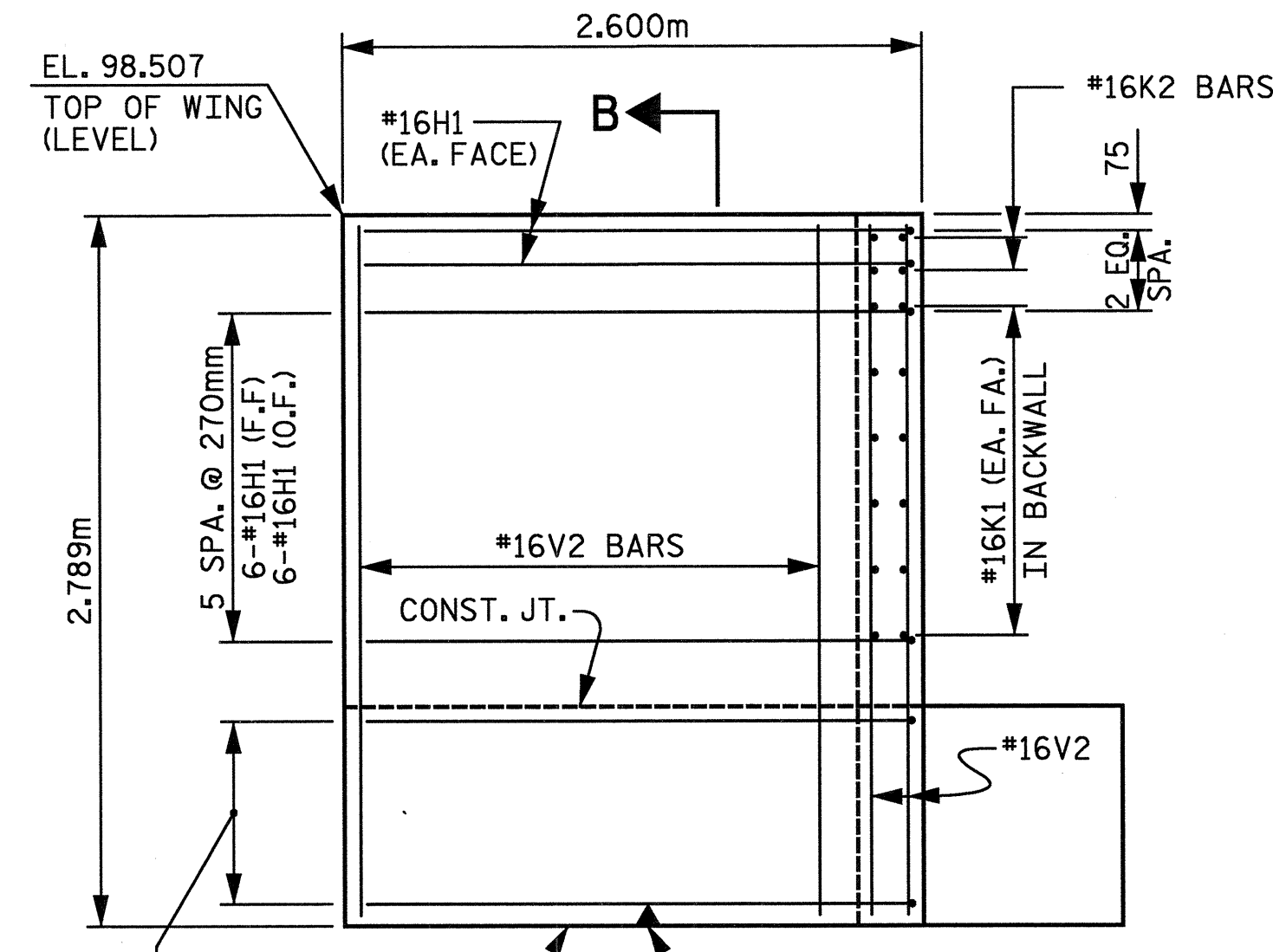
d:\v\dl\lowery 02/23/2005 10:44:49 AM m:\proj\3109-300\ustation\struct\find\3109-300_end_bent_2b.dgn



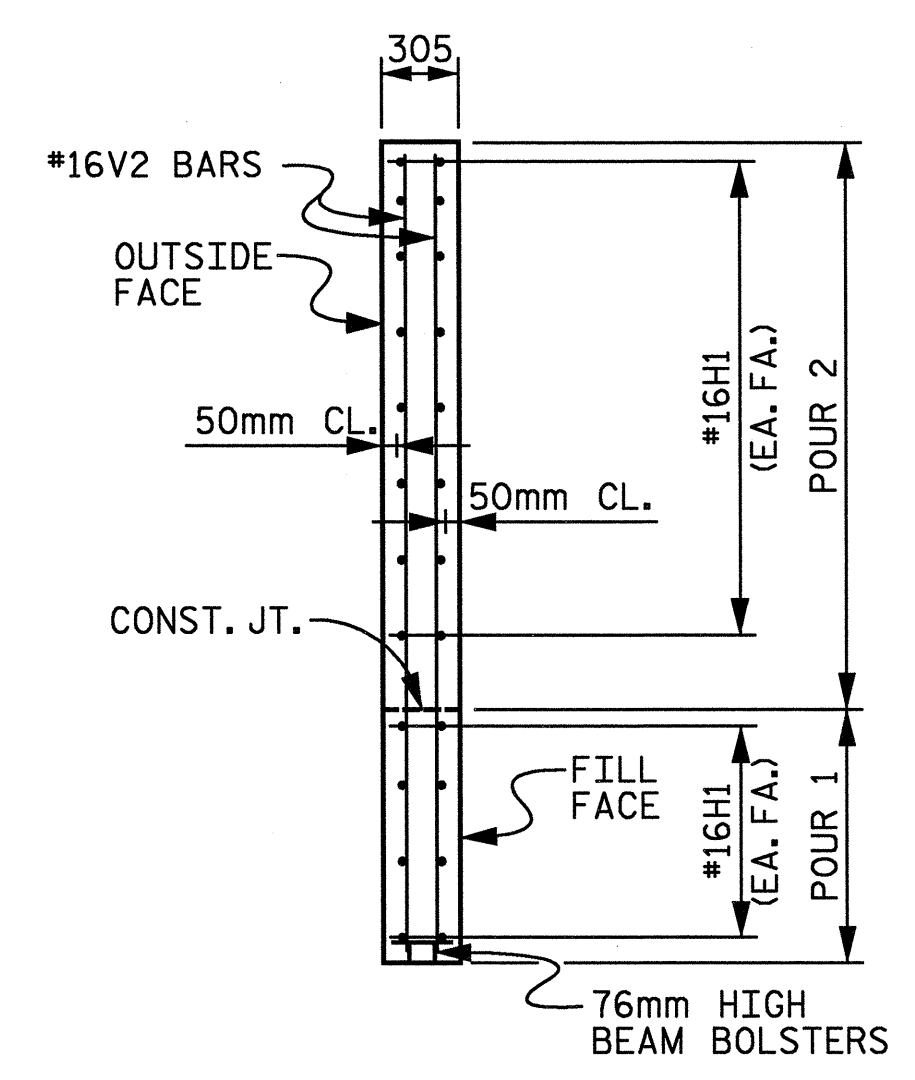
PLAN W1



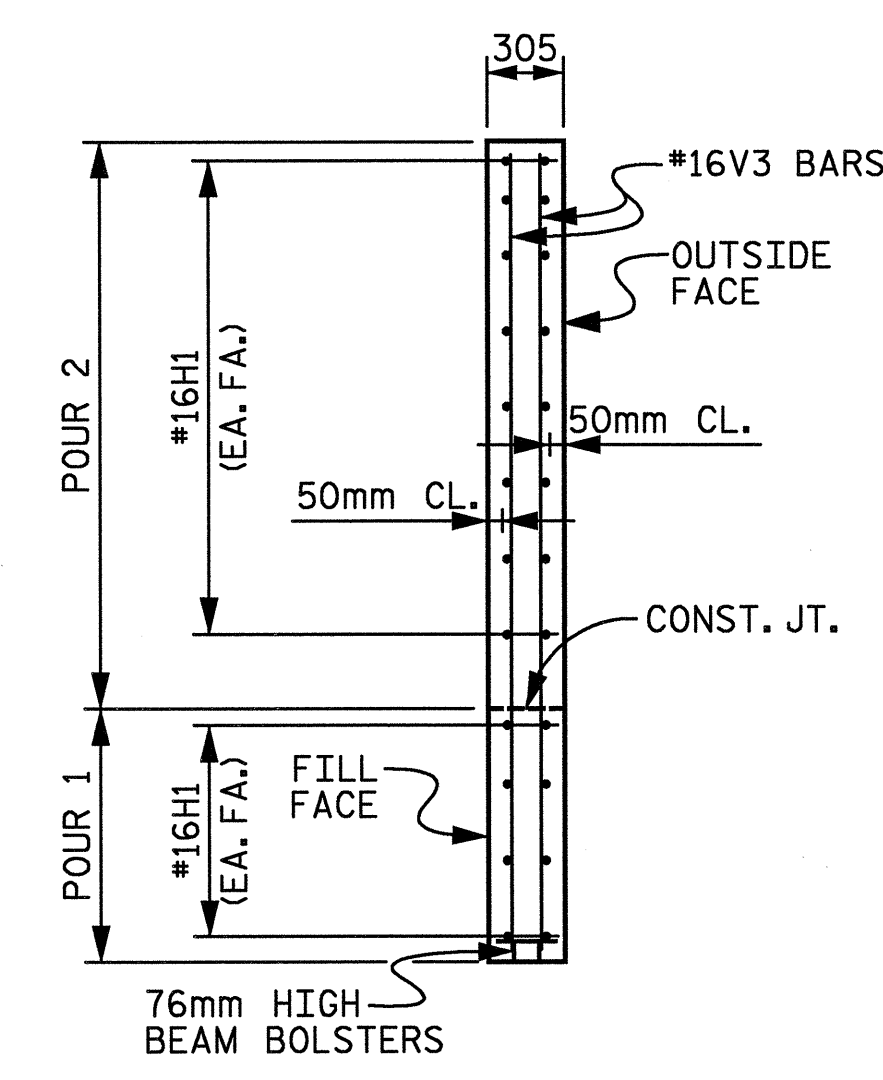
PLAN W2



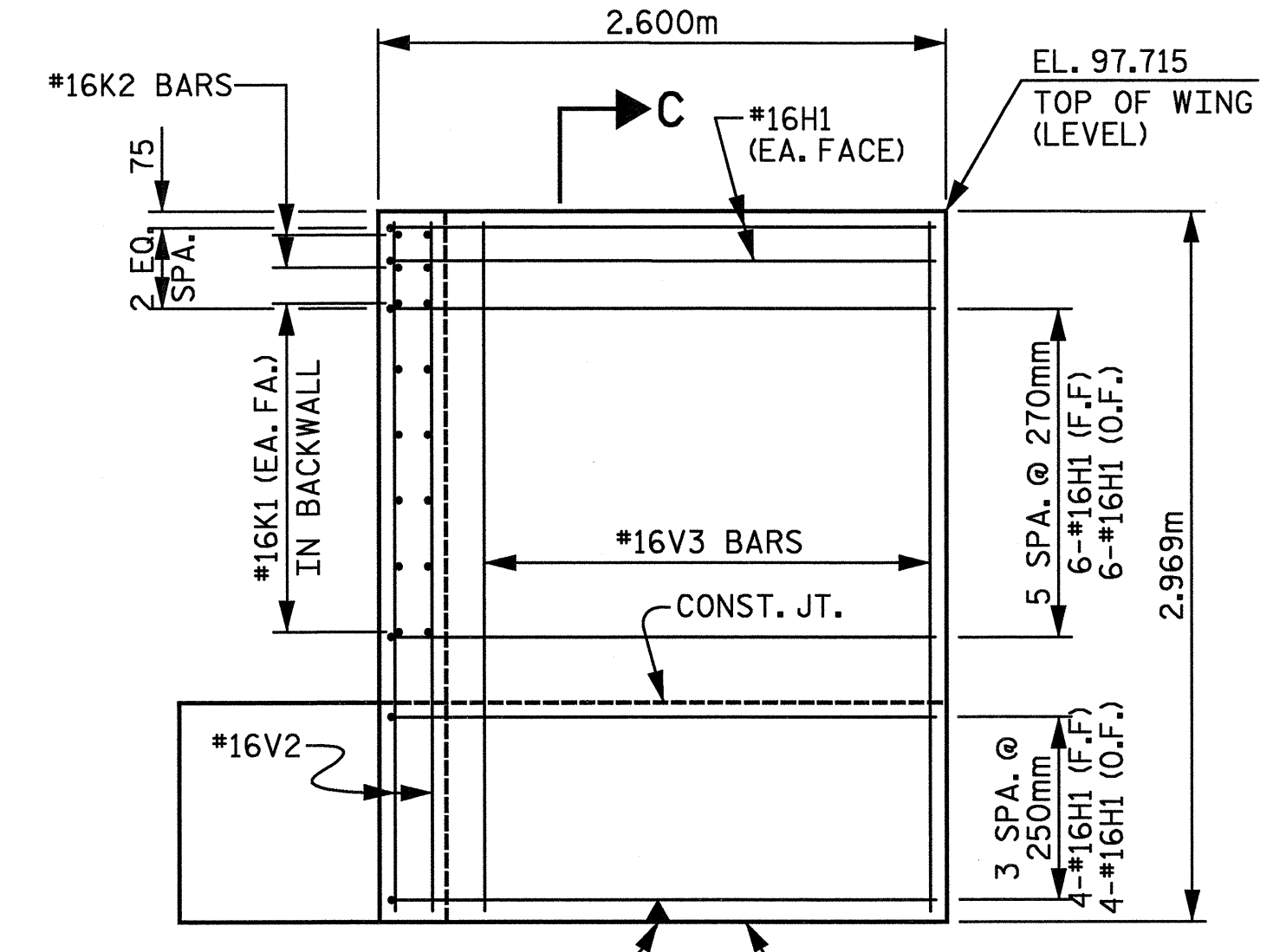
ELEVATION W1



SECTION B-B

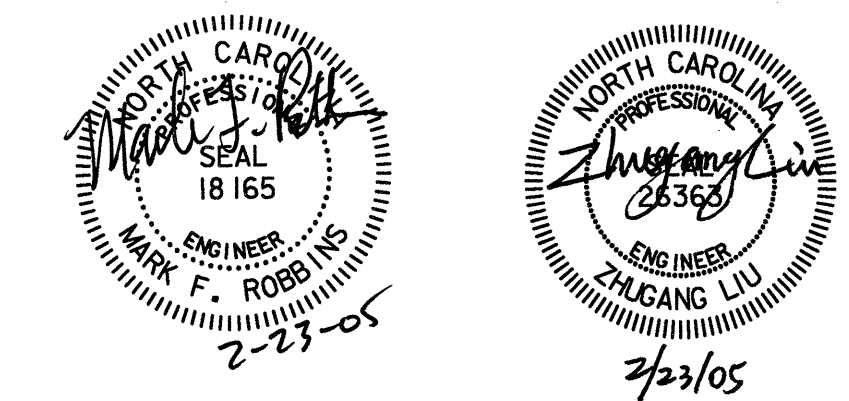


SECTION C-C



ELEVATION W2

PROJECT No R-252C
 JOHNSTON COUNTY
 STATION: POS 16+52.599 -Y4- =
 POC 9+28.021 -FLYOVER-



W RALPH WHITEHEAD ASSOCIATES, INC.
 CONSULTING ENGINEERS
 P.O. BOX 35624 CHARLOTTE, N.C. 28235
 DRAWN BY ARH DATE: 12-04 DWG. NO. D-1748-29
 CHECKED BY TBQ DATE: 01-05

REVISIONS		SHEET 2 OF 3	
NO.	DATE	NO.	DATE
1		3	
2		4	

STATE OF NORTH CAROLINA
 DEPARTMENT OF TRANSPORTATION
 RALEIGH

END BENT 2

SHEET NO. S-424
TOTAL SHEETS 431